

# Recent Buildings Constructed of Shope Brick

## Shope Brick Company Forges to Front.

Popularity of Local Man's Cement Brick Spreads Rapidly Through United States.

BY ROGER T. HILL.  
THE story of the development of the Shope brick industry reads more like a romance than like a modern achievement in practical business.

Twelve years ago D. F. Shope, founder of the Shope Brick company, established a plant which turned out a few thousand brick a month according to his patented process. Today that company has a \$100,000 plant at East Eighth and Division streets, which, during the month of August, turned out 251,000 brick. At the same time other concerns operating under a contract with Mr. Shope in twenty states in the union were turning out this same product by the millions.

Not only this, but Mr. Shope has received overtures from the Chinese government asking him to establish a plant for the manufacture of his special type of cement brick for use in building activity in that country, and this work will be taken up as soon as conditions become more settled in the oriental nation.

When Mr. Shope first entered the Portland field architects were slow in recommending Shope brick, as architects are naturally conservative in specifying a new or untried material, but now many are availing themselves of the opportunity to use Shope brick in carrying out many new designs of finish and blending of color schemes. It was necessary for him to put forward an aggressive selling campaign in order to get his product tried out in construction work. Now, however, he can point to the new Montgomery Ward & Co.'s building and the Labor temple, two of the city's most prominent structures, built of Shope patented process brick, while residences, garages and fireplaces in which the Shope brick are used may be found in all sections of the city.

There must be a reason for that irresistible growth of a business which has placed the Shope brick on the market in practically all sections of the country. The reason, according to the testimony of users of the brick, is to be found in the intrinsic merit of the product. The brick when tried out in construction jobs has proved to be not wanting, but, on the contrary, to be superior to the much advertised clay brick.

A feature of the Shope brick, which has been a factor in its growing popularity, is its stability, which is like that of the rock itself. By the Shope patented process the brick is made of clean sand, gravel and cement, with the addition of an iron oxide coloring to give the required color to the face. The process is simple and turns out brick, every one of which is perfect, whereas a large percentage of every kiln of clay brick are culls. By the Shope process the brick are moulded, steamed to hasten crystallization and may be headed for the job the third day.

This speed and simplicity in construction is in marked contrast to the manufacture of the clay brick. In the manufacture of this latter brick the product must first be mined, then ground in a special machine, moulded and placed in the dry shade. After drying sufficiently the brick must be placed in the kiln, burned for a week or ten days and then allowed to cool slowly. A process which, altogether, requires weeks to turn out a product. When taken from the kiln the brick which was nearest the fire has the darkest shade and is the smallest. It is also true that only about 50 per cent of each kiln of brick will be firsts, and this required tedious culling.

Whereas the manufacturer of the clay brick must have a large amount of stock on hand owing to the length of time required in turning out his product and the varied quality of the brick in order to be sure of furnishing a given type of product when an order is received, the manufacturer of the Shope brick has a much easier problem. The possibility for the speedy turning out of the concrete brick all of uniform size, shape and design makes possible a quick turnover and does away with the need for large stocks.

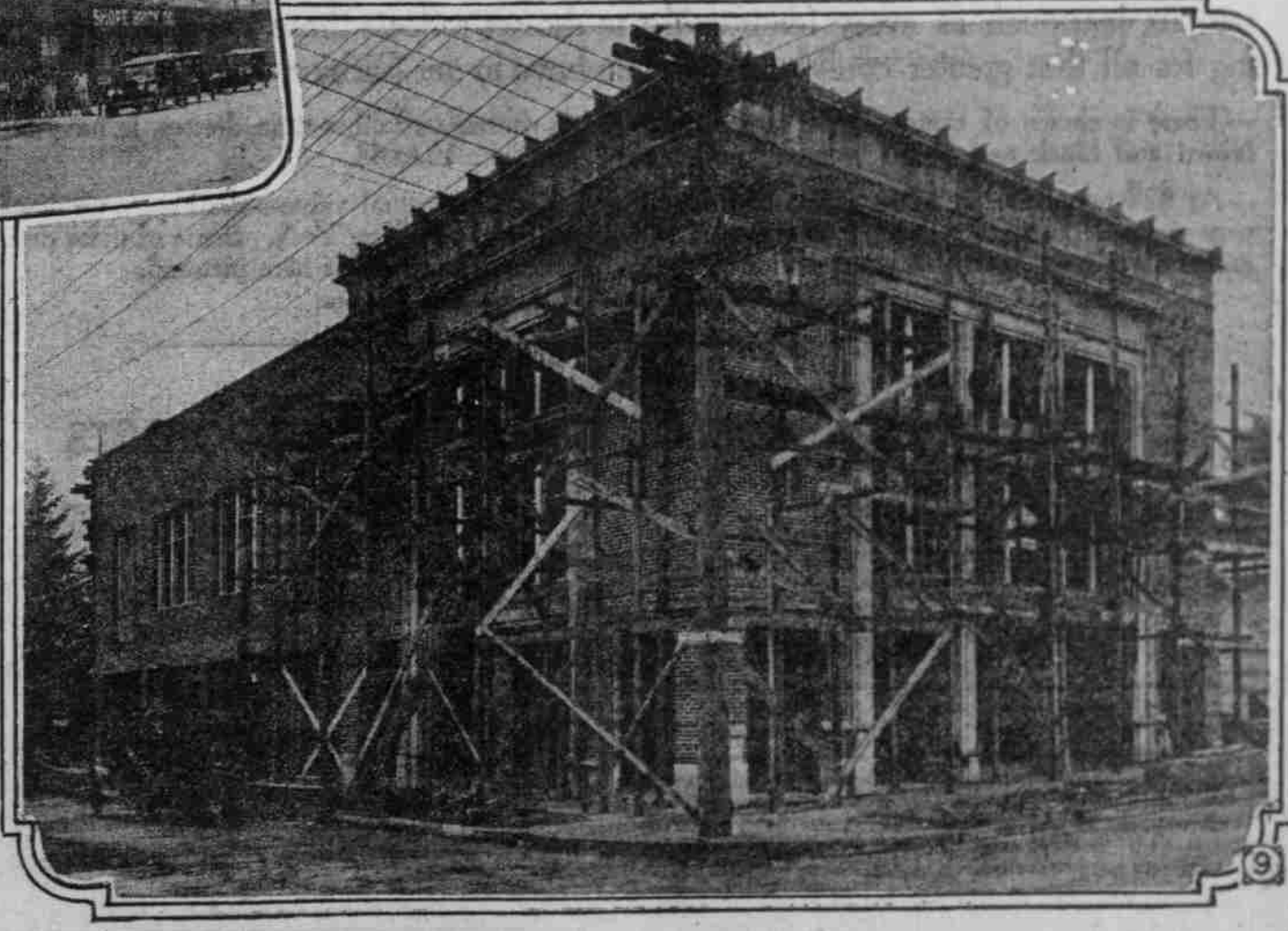
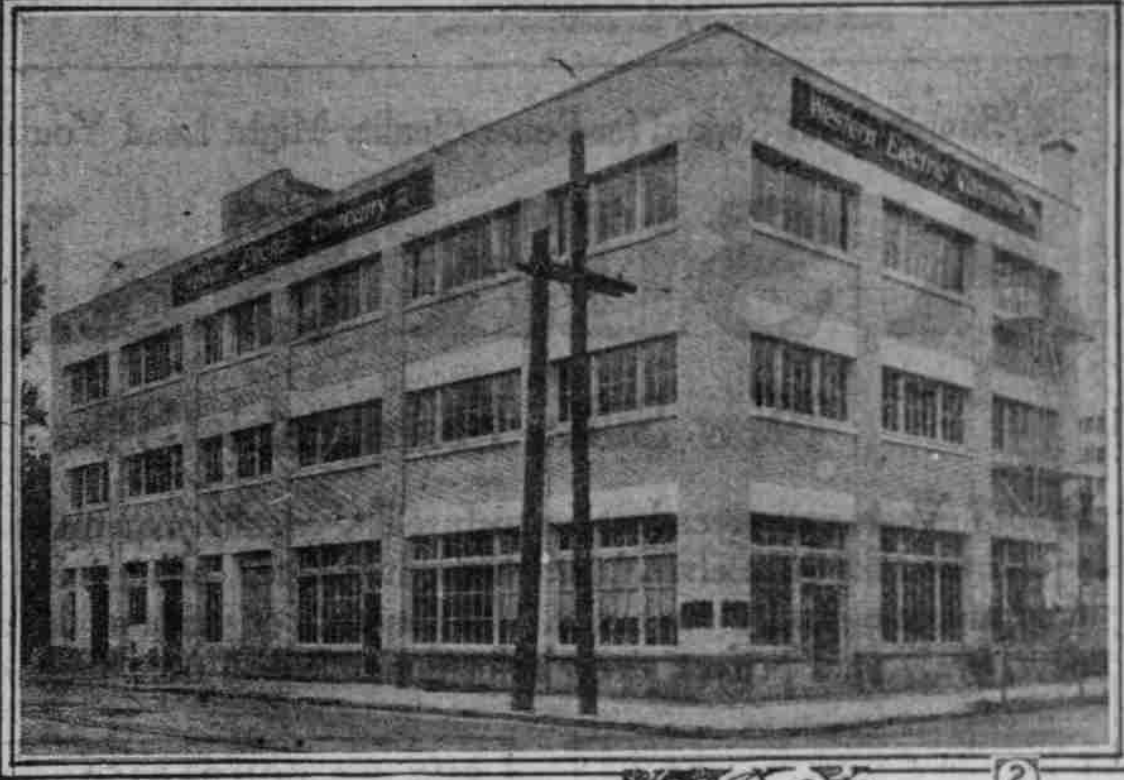
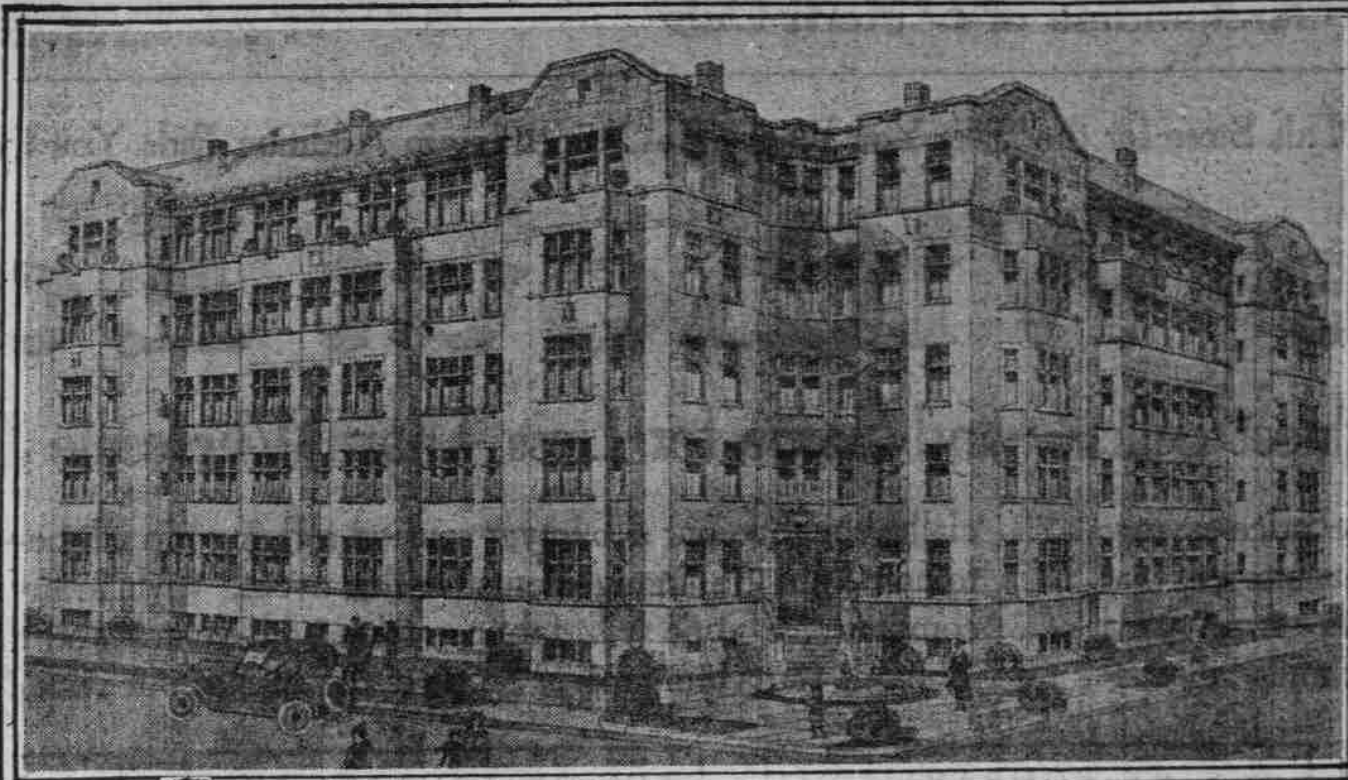
It is the contention of Mr. Shope that the manufacturers of the clay brick haven't discovered many new improvements in their product since the time of the Egyptians. The Shope brick, however, he contends to be a product of the modern decade, as far in advance of the old mud brick as the automobile and aeroplane of today are in advance of the ox carts of olden times.

That the Shope brick is no longer an experiment is borne out by the fact that it is being used more and more in construction throughout the country. The use of concrete in foundations and in other structures where endurance and fire-resisting qualities are desired is decidedly past the experimental stage. The Shope brick is nothing more or less than concrete in an attractive and convenient form.

In the Shope brick for fireplaces and ornamental construction the color used in working out the design is mineral coloring the same as that found in the natural state in the clay brick. The enduring qualities of the color in Shope brick has been demonstrated on numerous occasions when the brick have been subjected to fire and water during conflagrations and to extremes of snow and ice during winter storms. In all such cases the color of the brick has been found unaltered.

The Shope brick is said to be the only concrete brick yet developed which will successfully withstand water under the most adverse conditions. This is due to the fact that the special process developed by Mr. Shope makes it possible to mix the concrete used in the construction of the brick sufficiently wet, because the face of the brick is applied to the top surface after the manner of applying the top coat to a sidewalk.

In addition to the manufacture and sale of the Shope brick in Portland and vicinity, Mr. Shope has been doing a big business in the gradual enlarging of the territory in which his brick are handled through selling the rights to individuals or companies to manufacture brick by his patented process in given territories. Indications are that it will not be long now before Shope brick will be found wherever building material is sold, its colors rivaling the best tapestried brick of the clay brick manufacturers and its quality and durability superior to the clay brick.



1. Clifton Court apartments, Walla Walla, Wash. E. T. Osborn, architect, Seattle, Wash. This will be one of the finest equipped apartments on the Pacific coast, containing forty-five apartments, hardwood floors, tile baths, most modern plumbing fixtures, banquet and dance hall, live fireplace in every apartment.
2. Western Electric company's building, Park and Flinders streets, Portland, Strong & MacNaughton, architects. E. D. Van Dersal, owner.
3. Porch and chimneys on residence, at Almsworth and Vancouver avenues, Portland, Or.
4. Residence built of Shope hollow wall construction by D. F. Shope, president of Shope Brick company, for his daughter, Mrs. L. H. Snyder, at Twenty-third and Stephens streets, Colonial Heights, Portland, Or. Carl L. Lind, architect.
5. Fireplace in W. H. Dunn's residence at Thirty-ninth street and Laurelhurst avenue, Portland, Or.
6. Looming hotel, a million-dollar hotel at Williamsport, Pa. W. L. Stoddard, architect, New York, N. Y.
7. Exterior view of Shope Brick company's office and plant, Portland, Or., showing fleet of trucks and workmen.
8. Mount Hood Masonic temple, Commercial and Emerson streets, Portland, Or. (Now under construction.) Orlo R. W. Hossack, architect. Tranchell & Farrell, contractors.
9. Kenton Masonic lodge at Kenton. (Now under construction.) Orlo R. W. Hossack, architect. Christen Spies looking after the craft.

We install plants in allotted territory only, controlling machinery and process patents, producing over sixty varieties in shades and textures. A home industry in every community. Plants installed and being installed throughout the country this season are Las Vegas, N. M.; El Paso and Waco, Texas; Canton, Ohio; Springfield and Worcester, Mass., and Baltimore, Md. All the machinery and equipment for these plants were manufactured in and shipped from Portland. Parties interested write or call.

# Shope Brick Company

East Eighth and Division Sts. Portland, Oregon