

WHITE TRUCK HOME SOLD FOR \$80,000

Otto W. Nelson Takes Over Property From Bank.

STRUCTURE MODERN ONE

Building Reported to Be Paying 9 Per Cent on Investment and to Be Well Designed.

The White Truck building on Hancock and Flint streets was sold last week by the Hibernia Commercial & Savings bank to Otto W. Nelson for \$80,000.

The building is leased to the White Truck company and shows a return to the investor of approximately 9 per cent net, it is declared.

Across the entire length of the building, 200 feet deep and immediately in the rear of the office and the parts department, is the service and shop department.

SHOPE PLANT IS EXPANDED

Brick Company Now Producing 25,000 Every Day.

The plant of the Shope Brick company at 470 East Eighth and Division streets has been greatly enlarged until it now has a capacity of 25,000 bricks a day.

A large concrete mixer has been installed. This mixer occupies the center of a large platform and when operated at full capacity a series of mounds surrounding this platform are all operated for the moulding of brick.

The increase in the size and capacity of the plant has made the present investment aggregate \$100,000, according to Mr. Shope.

Mr. Shope started in a small way in Portland 12 years ago and at that time his plant turned out but a few thousand bricks a month.

BUILDING MEN TO MEET

PROGRAMME WILL BE PRESENTED OCTOBER 17.

Organization of Guilds of Craftsmen to Be Perfected in Near Future.

A programme of benefit to the building industry and the general public as well is to be presented by the school committee of the Association of Building and Construction at the next regular meeting.

October 17, James J. Sayer is chairman of this committee. Other members of the committee are Frank Ransom, E. E. Goudey, H. G. Ritter.

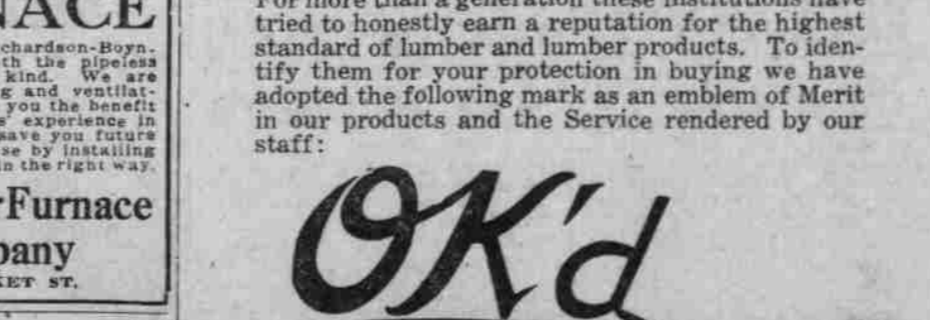
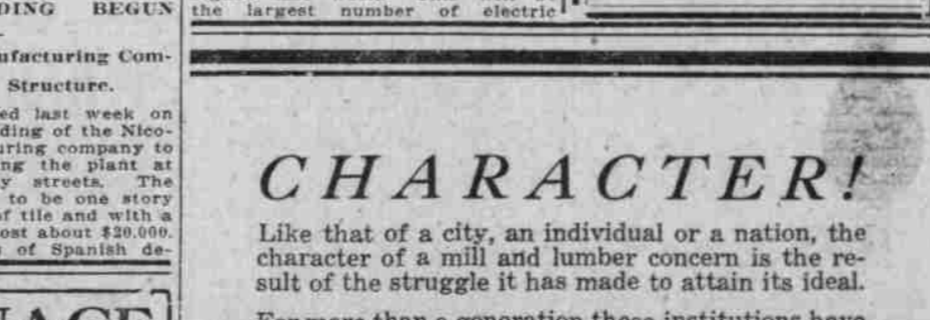
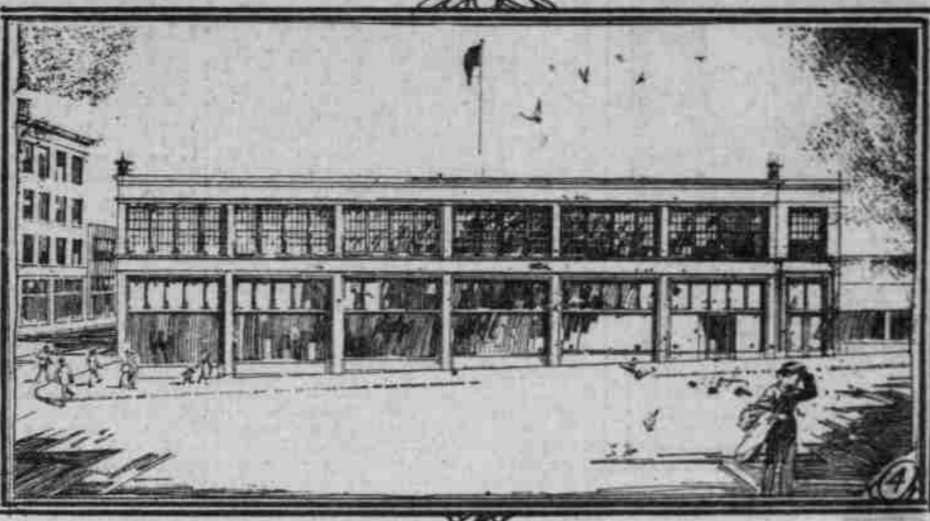
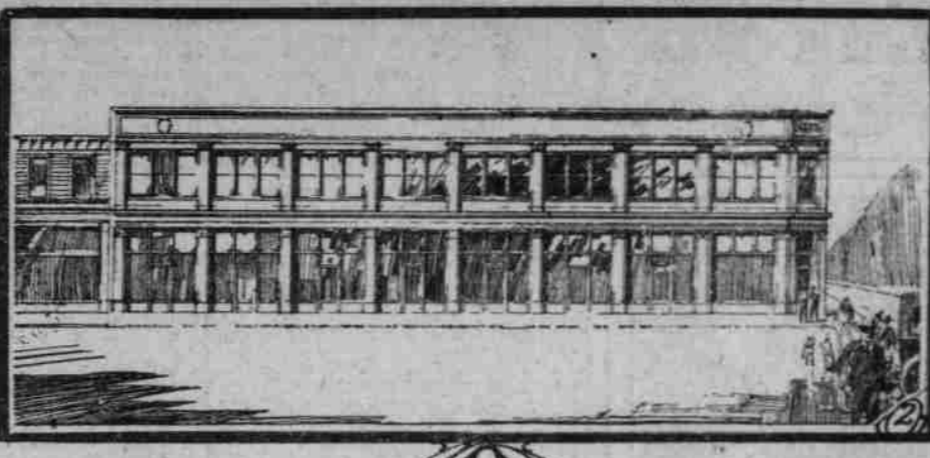
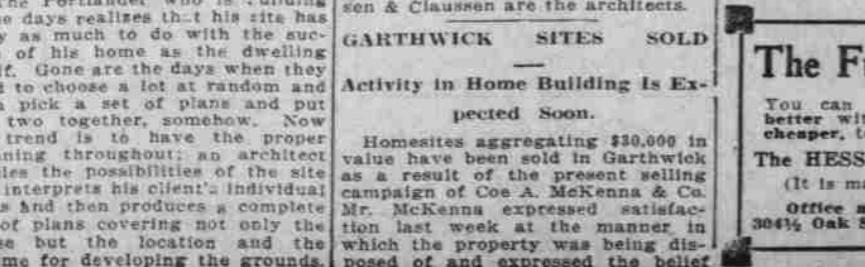
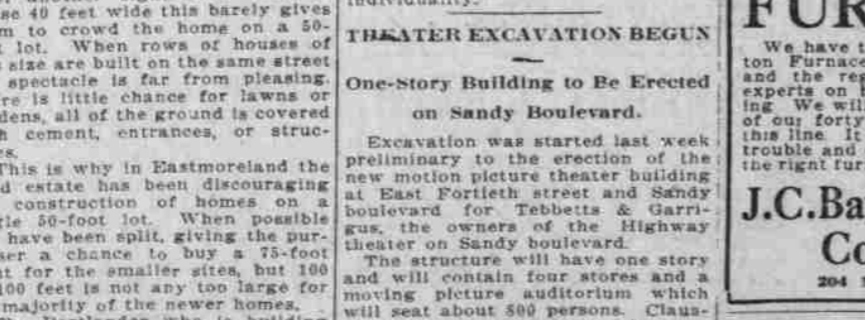
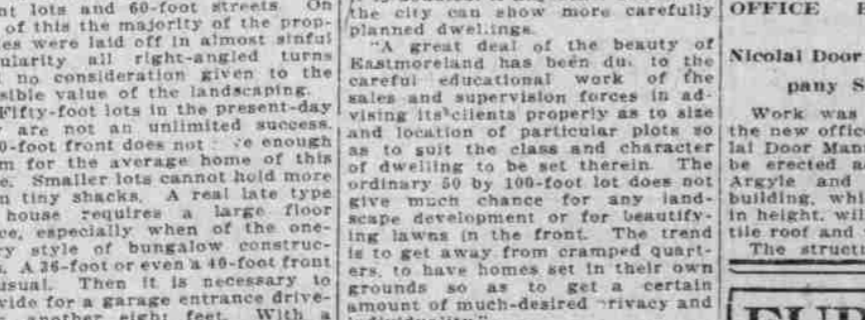
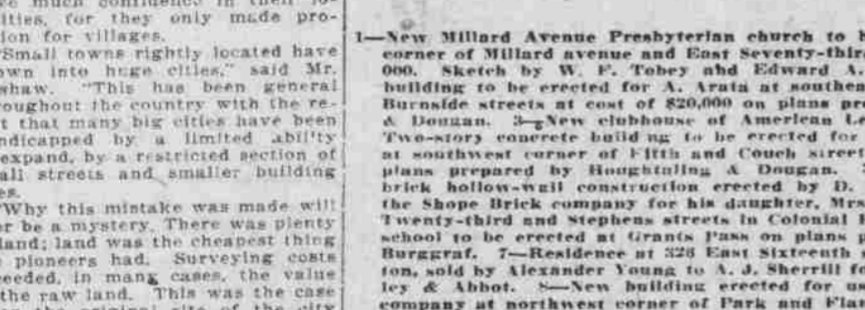
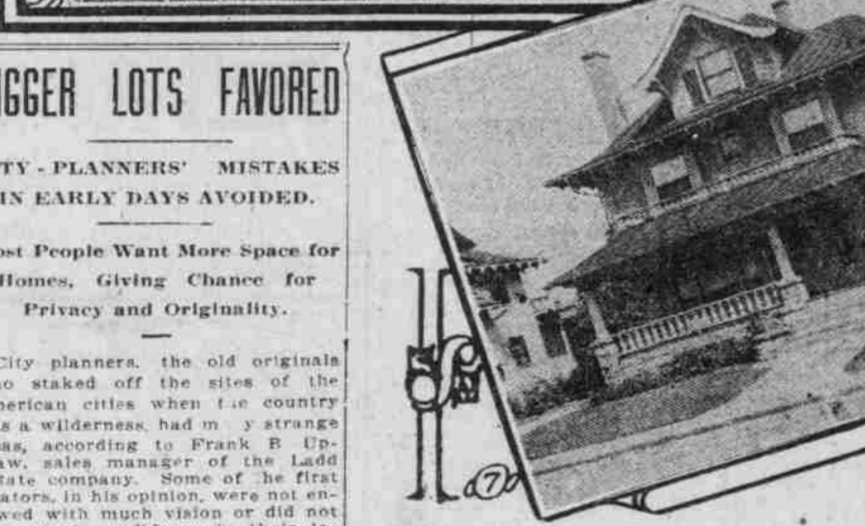
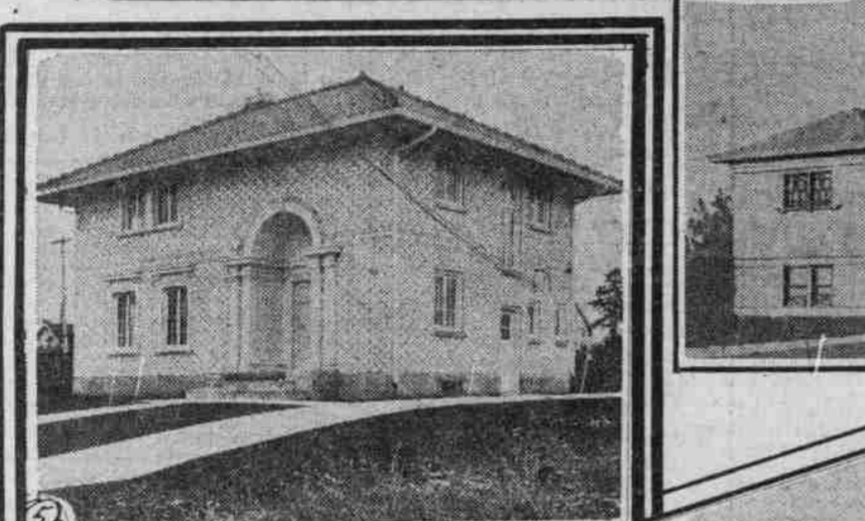
The organization of guilds of craftsmen will soon be perfected according to Charles D. James, chairman of the committee.

Stephen L. Miller, dean of the school of commerce of the University of Washington, will address the meeting.

Armory Contract Is Let.

The contract for the erection of the new \$50,000 armory at Medford was awarded last week to the firm of Stevenson & Kaibach of that city.

CONSTRUCTION OF BUSINESS BUILDINGS AND RESIDENCES CONTINUES ACTIVE IN PORTLAND AND THE STATE AT LARGE.



HOMES, BUSINESS BUILDINGS RUSHED

Wet Weather No Deterrent to Construction.

BIG STRUCTURES GO UP

Portland and Out-State Towns Alike Scenes of Activity Despite Season.

Construction of business buildings and residences continues to be one of the biggest factors in the real estate activity of Portland and the state at large.

Houghtaling & Dougan have completed plans for the immediate erection of two two-story buildings costing \$20,000 each.

Concrete Building Planned. The other of these two buildings is to occupy 55 by 100 feet at the southeast corner of Sixth and Burnside streets.

Grade School Contemplated. A new grade school building costing \$15,000 is to be erected immediately at Grand Pass.

Ritz Hotel Lease Sold. The lease and furnishings of the Ritz hotel were sold last week by Frank A. Clark to Mrs. M. M. Farnham.

22 Electric Ranges Sold. Contract Signed for Installation for Sovereign Apartment Hotel.

Contract Signed for Installation for Sovereign Apartment Hotel. Seventy-two modern electric ranges will be installed in the new Sovereign apartment hotel.

22 Electric Ranges Sold. Contract Signed for Installation for Sovereign Apartment Hotel.

Contract Signed for Installation for Sovereign Apartment Hotel. Seventy-two modern electric ranges will be installed in the new Sovereign apartment hotel.

Contract Signed for Installation for Sovereign Apartment Hotel. Seventy-two modern electric ranges will be installed in the new Sovereign apartment hotel.

Contract Signed for Installation for Sovereign Apartment Hotel. Seventy-two modern electric ranges will be installed in the new Sovereign apartment hotel.

Contract Signed for Installation for Sovereign Apartment Hotel. Seventy-two modern electric ranges will be installed in the new Sovereign apartment hotel.

Contract Signed for Installation for Sovereign Apartment Hotel. Seventy-two modern electric ranges will be installed in the new Sovereign apartment hotel.

The American Legion post, arrangements have been made to care for Shiloh post, Grand Army of the Republic, the Women's Relief corps and the Women's auxiliary.

HOME IS SOLD FOR \$7900

Residence of Alexander Young Is Purchased by A. J. Sherrill.

The residence of Alexander Young at 226 East Sixteenth street North in Irvington was sold last week to A. J. Sherrill for \$7900.

The same firm reported other sales for the week as follows: At 1169 Thurman street, Williamette Heights, for Mrs. Jessie M. Moore to Mary A. Ryan.

SALVATION ARMY HOME DONE

Two-Story Citadel to Be Dedicated at Services Today.

The two-story citadel of the Salvation Army, erected at Ninth and Ankeny streets at a cost of \$108,000, is now practically completed.

The structure has a main hall on the second floor which will seat 800 persons. A secondary hall in the basement will provide facilities for smaller gatherings.

The structure has a main hall on the second floor which will seat 800 persons. A secondary hall in the basement will provide facilities for smaller gatherings.

The structure has a main hall on the second floor which will seat 800 persons. A secondary hall in the basement will provide facilities for smaller gatherings.

The structure has a main hall on the second floor which will seat 800 persons. A secondary hall in the basement will provide facilities for smaller gatherings.

The structure has a main hall on the second floor which will seat 800 persons. A secondary hall in the basement will provide facilities for smaller gatherings.

The structure has a main hall on the second floor which will seat 800 persons. A secondary hall in the basement will provide facilities for smaller gatherings.

The structure has a main hall on the second floor which will seat 800 persons. A secondary hall in the basement will provide facilities for smaller gatherings.

The structure has a main hall on the second floor which will seat 800 persons. A secondary hall in the basement will provide facilities for smaller gatherings.

The structure has a main hall on the second floor which will seat 800 persons. A secondary hall in the basement will provide facilities for smaller gatherings.

The structure has a main hall on the second floor which will seat 800 persons. A secondary hall in the basement will provide facilities for smaller gatherings.

The structure has a main hall on the second floor which will seat 800 persons. A secondary hall in the basement will provide facilities for smaller gatherings.

The structure has a main hall on the second floor which will seat 800 persons. A secondary hall in the basement will provide facilities for smaller gatherings.

BIGGER LOTS FAVORED

CITY PLANNERS' MISTAKES IN EARLY DAYS AVOIDED.

Most People Want More Space for Homes, Giving Chance for Privacy and Originality.

City planners, the old originals who staked off the sites of the American cities when the country was a wilderness, had a strange idea, according to Frank B. Uphaw, sales manager of the Ladd Estate company.

Small towns rightly located have grown into huge cities, said Mr. Uphaw. "This has been general throughout the country with the result that many big cities have been handicapped by a limited ability to expand by a restricted section of small streets and smaller building sites."

Why this mistake was made will ever be a mystery. There was plenty of land; land was the cheapest thing the pioneers had.

They were not alone in their error, if error it can be called. Even as late as 1907 additions were planned in Portland with 33 and 25-foot lots and 60-foot streets.

On top of this the majority of the promoters were laid off in almost staid regularity all right-angled towns, with no consideration given to the possible value of the lands in the city.

Small lots are built on the same street, the spectacle is far from pleasing. There is little chance for lawns or gardens, all of the ground is covered with cement, entrances, or structures.

This is why in Eastmoreland the Ladd estate has been discouraging the construction of homes on a single 50-foot lot.

OFFICE BUILDING BEGUN

Nicolai Door Manufacturing Company Starts Structure.

Work was started last week on the new office building of the Nicolai Door Manufacturing company to be erected adjoining the plant at Argyle and Derby streets.

The building, which is to be one story in height, will be of tile and with a tile roof and will cost about \$20,000.

The structure is of Spanish design. It provides about 50x75 feet of office space.

Work was started last week on the new office building of the Nicolai Door Manufacturing company to be erected adjoining the plant at Argyle and Derby streets.

The building, which is to be one story in height, will be of tile and with a tile roof and will cost about \$20,000.

The structure is of Spanish design. It provides about 50x75 feet of office space.

Work was started last week on the new office building of the Nicolai Door Manufacturing company to be erected adjoining the plant at Argyle and Derby streets.

The building, which is to be one story in height, will be of tile and with a tile roof and will cost about \$20,000.

WATER EXCAVATION BEGUN

One-Story Building to Be Erected on Sandy Boulevard.

Excavation was started last week preliminary to the erection of the new motion picture theater building at East Fortieth street and Sandy boulevard.

The building, which is to be one story in height, will be of tile and with a tile roof and will cost about \$20,000.

The structure is of Spanish design. It provides about 50x75 feet of office space.

Work was started last week on the new office building of the Nicolai Door Manufacturing company to be erected adjoining the plant at Argyle and Derby streets.

The building, which is to be one story in height, will be of tile and with a tile roof and will cost about \$20,000.

The structure is of Spanish design. It provides about 50x75 feet of office space.

Work was started last week on the new office building of the Nicolai Door Manufacturing company to be erected adjoining the plant at Argyle and Derby streets.

The building, which is to be one story in height, will be of tile and with a tile roof and will cost about \$20,000.

THE FUEL PROBLEM

You can heat your house better with gas, and do it cheaper, too, if you use.

THE HESS GAS FURNACE (It is made in Portland) Office and Show Room 304 1/2 Oak St. Broadway 5261

THE HESS GAS FURNACE (It is made in Portland) Office and Show Room 304 1/2 Oak St. Broadway 5261

THE HESS GAS FURNACE (It is made in Portland) Office and Show Room 304 1/2 Oak St. Broadway 5261

THE HESS GAS FURNACE (It is made in Portland) Office and Show Room 304 1/2 Oak St. Broadway 5261

THE HESS GAS FURNACE (It is made in Portland) Office and Show Room 304 1/2 Oak St. Broadway 5261

THE HESS GAS FURNACE (It is made in Portland) Office and Show Room 304 1/2 Oak St. Broadway 5261

THE HESS GAS FURNACE (It is made in Portland) Office and Show Room 304 1/2 Oak St. Broadway 5261

THE HESS GAS FURNACE (It is made in Portland) Office and Show Room 304 1/2 Oak St. Broadway 5261

IT TAKES ABOUT 3 WEEKS TO MAKE A BRICK.

When a brick is made it will always be a brick and do the work of a brick.

Wood will decay, stone and concrete will crumble long before real brick outlive their usefulness. Brick can always be re-used.

BRICK ARE MADE ONLY OF BURNED CLAY

Any substitute or imitation made of any other material is not brick and will not be dependable if used as brick.

If You Want Brick Be Sure It Is a Brick

STANDARD BRICK & TILE CO.

83 Fifth St. Real Burned Clay Brick B'way 0018

always a clean house—always a good-to-be-seen house—if its floors are covered with

Inlaid Linoleum

Every building, public or private, large or small, can profitably be furnished with inlaid linoleum.

Cork Floor Products Co.

Broadway at Taylor Street Armstrong's Linoleum and Inlaid Cork Tiling.

Columbia Digger Co. TOWING AND LICHTERING SAND GRAVEL

Bates Block Bldg. PHONE BROADWAY 997

Bates Block Bldg. PHONE BROADWAY 997