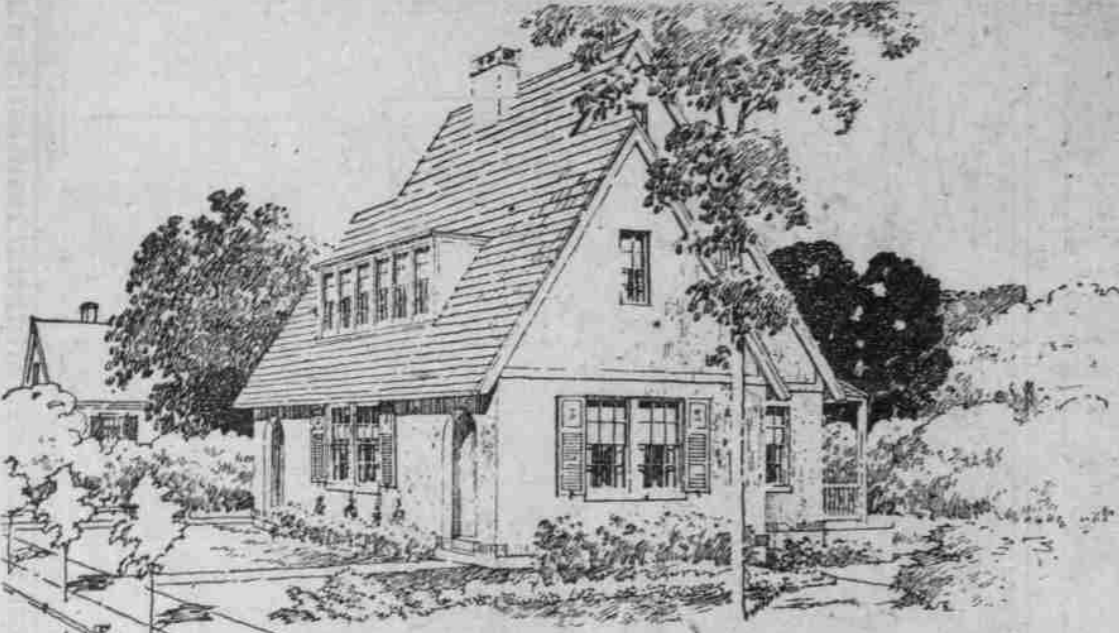
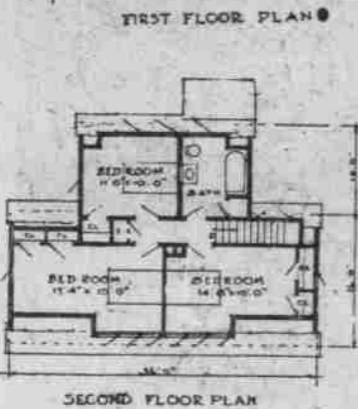
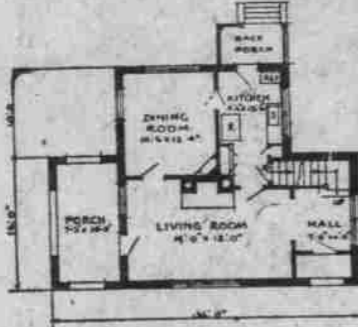


STEEP GABLED ROOF OF CEMENT STUCCO HOUSE GIVES RELIEF FROM HOT SUMMER

Arched Openings at Either End of Home Make Attractively-balanced Front Exposure—Central Fireplace Dominates All in Living Room—Upper Floor Conveniently Arranged.



THOSE who have lived in the top floor apartment of a flat building and those who have lived in a story-and-a-half bungalow with a flat-pitched roof will appreciate the relief from the stifling heat of mid-summer afforded by the steep gabled roof of this cement stucco house.



Arched openings at either end of the house make an attractively balanced front exposure. The one at the right hand leads to a sheltering recessed entrance porch, and thence into the large entrance hall, which really is part of the 12 by 19-foot living room adjoining. A convenient clothes closet might well be placed at the far end of the hall under the stairs.

Through a double swinging door, with a glass upper panel, one enters the kitchen. This is indeed a little gem, well lighted and, best of all, well ventilated. Three doors and a large double window offer instant

means of relief should the room be uncomfortable. A built-in pantry case and kitchen cabinet combined, and a closet for the broom, garbage can and what-not are deftly arranged so as to be mutually satisfactory. Probably a better place than inside the kitchen for the refrigerator would be a small covered closet placed on the back porch, just outside the door. It should be well insulated from the heat of the sun. The kitchen door might be moved to one side and thus provide space in the corner for a small table.

A conveniently arranged and roomy upper floor is found at the head of the stairs. Each of two large bedrooms has two clothes closets. The other has one. The bathroom and linen closet are also found here. Two or more wide opening casement windows provide good ventilation for each bedroom. The attic up above also assures a comfortable temperature. The house has been designed to be built of sand-floated, cream-colored cement plaster on plain tile. Cement plaster on metal lath is used on the wall back of the kitchen range and for the basement ceiling over the heating plant and coal storage, which we are told, are vulnerable to fire.

LIFE ON SLEEPERS IS GAY AS ENGINEER TAKES DETOUR

When Car Hits Bump, Man in Berth Below Comes Up and Strikes Passenger Smartly Through Mattress.

THIS really won't be much of a sleeping car story because there isn't any snoring in it. That's how you tell about sleeping car stories. You see, they're quite sure where the scenes are laid till somebody snores, then everybody snores, and you know, sure enough, that it's about a sleeping car.

Contemporaneously a lady in the berth opposite me cried out: "Merciful heavens! Where is Egbert?" I identified Egbert almost immediately as the little child who had somehow or other filtered into my berth over the curtain rail.

I took the upper berth for the reason that all people take upper berths—because the sleeping car company, always greedy for gain, had sold all the lower berths, which, paradoxically, command higher prices, before I got to the station.

Two more bumps and two more zig-zags followed, neither being in the least surprising to the engineer, and then a curious thing happened. The engineer took a detour. I wouldn't have believed before that time that railroad trains ever took detours, but this one was unmistakably doing so.

Well, after that, to all intents and purposes, I wasn't there, or if I was there I was so imperceptible as to be negligible. When one man looks at you with raised eyebrows you can ask him who the deuce he thinks he is looking at or make some other such crushing retort. But when six men look at you with twelve raised eyebrows, and then all suddenly resume the conversation you interrupted with your "On the fifth hole at the Bretton Woods course— you sort of fade out."

Almost at right angles we turned off, and then began a succession of little ascents and descents and sudden stoppings such as occur when a car gets mired down in a deep rut, or sinks into the mud on one side.

Prepare for the Long Winter Indoors—Buy a Victrola—Brunswick Heywood—Wakefield—Librola

When you consider that nearly eight months of the year are "indoor months," which means that we all spend the greater portion of our lives inside our homes, you have one of the principle reasons why we should make indoor life comfortable.

As a Special Number This Week, We Offer \$90 Heywood—Wakefield Phonographs at

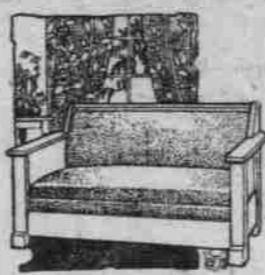
\$59.50

\$5.00 Cash—\$1.00 Week

The Heywood-Wakefield strikes a new and original note in the fashioning of phonograph cabinets. You will be charmed with the wide choice of colors in which the cabinets are finished. And when you hear the purity and sincerity of musical tones which issue from the instrument, you will want it. In this sale we offer fifty of these splendid instruments at a price much lower than has ever been quoted on a cabinet machine. The Heywood-Wakefield even at the special price carries our same guarantee of quality and service. Buy yours this week and get choice of finishes.

"We Charge No Interest"

\$61.00 "Kroehler" Bed Davenport



\$49.75

These davenports are upholstered in genuine Spanish leatherette, built with oak frames, and convert into a full-size bed. The Kroehler is two pieces in one, a comfortable davenport during the day and a big, full-sized bed at night. There are dozens of other Kroehler styles ready for your choosing.

Three Patterns Fine Mahogany Finish Davenport Tables

\$25.85

Regularly Priced From \$33.00 to \$38.00.

You who have a davenport in your living room will want one of these splendid davenport tables. They fit conveniently back of your davenport and wonderfully increase the appearance of your room. The tables advertised come in three lengths, forty, fifty-two and sixty inches, and are extreme values at the price.



These \$119 Six-Piece Quartered Oak Suites \$89.50

Think of buying a big buffet with mirror—an extension table that extends to six feet and four genuine leather dining room chairs at so low a price. Surely, no one should be satisfied with old, worn-out furniture when they can buy a suite at so low a price. If the complete suite is not needed, the pieces can be bought separately as follows:

- \$35.00 Table for.....\$23.00
- Chairs.....\$5.75
- \$55.00 Buffet for.....\$43.50



A Sale of Sample Carriages

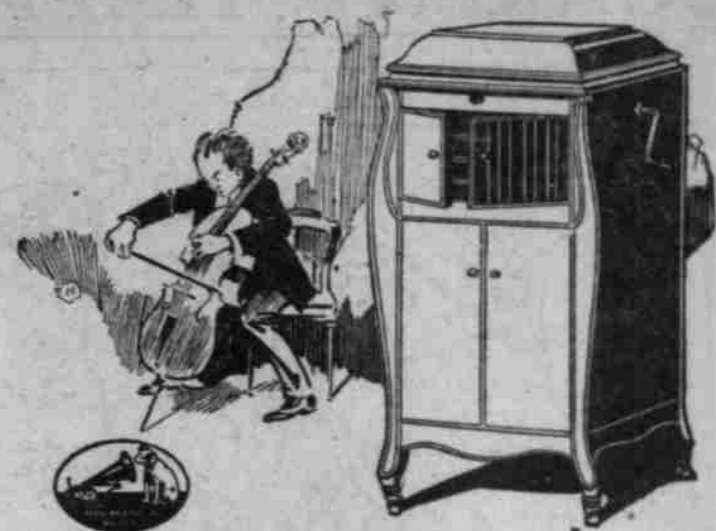
Values From \$46 to \$52 Choice

\$35.75

Offering a number of sample carriages which originally sold from \$46.00 to \$52.00 at one special price. These carriages are all of excellent make with splendid body design and are complete with hood and nicely lined. As these samples are sure to go quickly, we advise early choosing.

Novelty Bed Sets 20% Less

Our entire remaining stock of novelty bed sets in marquisettes, voiles, diadem and jewel cloths with fancy applique lace centers and others in plain and changed color silk poplin. Regularly priced from \$8.75 to \$38.50 reduced prices from \$7.00 to \$29.20.



October Records Now on Sale

The new October records are on sale tomorrow. Just step in the Third Street door—right on the main floor—and have the new records demonstrated—immediate attention, best of service, bright, airy, well-ventilated rooms for your comfort.

Regular \$20 Coil Bed Springs \$14.85

If you want a comfortable bed, you must have a good spring. In offering these coil bed springs, we are giving you the very best that are produced anywhere. They are double deck springs, built for comfort and service and are guaranteed both by the maker and by ourselves. These offered are fashioned for either wood or steel beds and are the best numbers that have ever been produced for this price.

\$65 Queen Anne Walnut Dining Tables

\$49.75

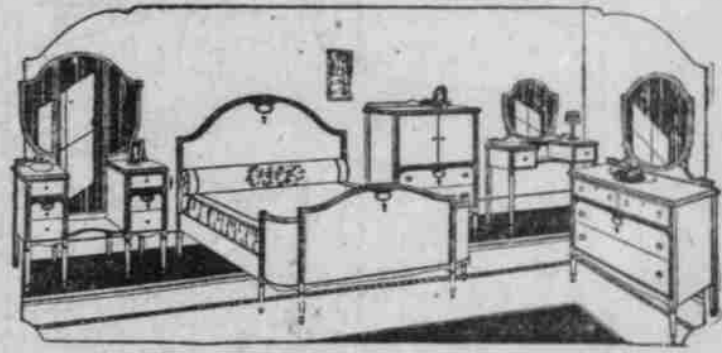


These tables regularly sell at \$65.00. They have 54-inch tops and when extended will seat eight persons. Beautifully finished in American walnut with molded tops and gracefully shaped legs. A number of other dining tables specially priced for the week.

\$1500 in Cash

To Charitable, Religious, Fraternal or Beneficial Organizations.

All Greater Portland Association stores are giving free votes with every ten-cent purchase. Secure votes with your purchases and give them to the organization you favor. \$500 to the one which receives the most votes. \$1000 divided among the others in proportion to the votes received.



The New "Commodore" Suite

Specialty Priced Four Pieces for... \$215

Just picture this splendid suite in your chamber with a splendid bow-foot bed, a chifferette, a dresser and a dressing table. Can you imagine any better value than this when you have your choice of mahogany, American walnut or ivory. If the complete suite is not needed the individual pieces may be had at the following prices:

- Bed.....\$62.75
- Chifferette.....\$19.75
- Toilet Table.....\$39.75
- Dresser.....\$62.75

Factory Demonstration and Sale of A-B Wood and Coal Ranges

This week the factory expert will be here to demonstrate this new high oven A-B wood and coal range—he will show you how a handful of kindling can heat this high oven range in a very few minutes. He will show how no appreciable decrease in temperature will exist in the oven in thirty minutes—a record of baking heat unrivaled.

Special Introductory Price

\$5.00 Delivers It **\$59.50** Then \$1.00 Week

Regular Value \$72.50

These ranges are distinguished by three big features; quick baking heat, uniform baking heat, economical baking heat. The baking oven above the fire is the one secret of these remarkable ranges. High oven ranges are no experiment for there are several hundred A-B high oven ranges of various styles in use in Portland homes today.



We Charge No Interest

Drapery Specials

- 65c Madras in blue, green, yellow and pink, very good for bedroom use. special yard.....49c
- \$2.75 figured Madras in two-tones, practical for living room, dining room and bedroom drapes, special yard.....\$1.69
- Tapestry table covers, sixty inches square, in foliage and verdure designs, choice of five colors, special.....\$4.95

