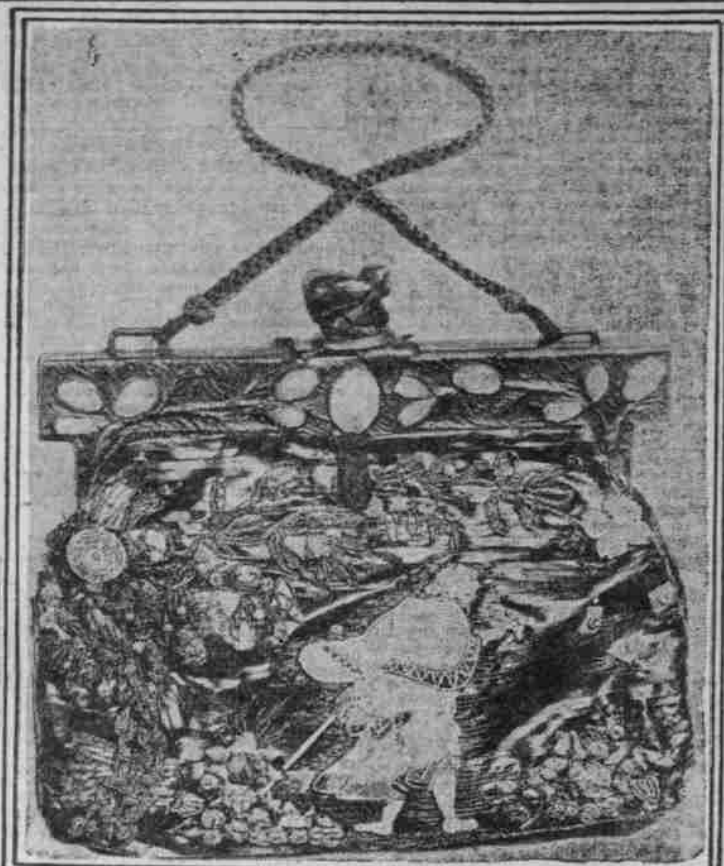


ORNATE FRENCH RETICULES IMPOSSIBLE TO DUPLICATE

New Bag Models From Paris Are Marvels of Art and Despair of Would-Be Home Producers.



These are the kind of reticules that are made in Paris.



A French version of the reticule work.

AS IMPOSSIBLE to copy at home as gold-mesh bags are the new bag models from Paris. Any woman could make for herself a beaded bag—if she had the patience. But even the cleverest home skill will balk at tackling one of these highly decorated reticules.

Problems of Dressmaking by Madam Richet

(Continued From First Page.) skirt at a low waist line, trimming the seam of joining with the cord looping in a double row, the upper row looping upwards and the lower downward. Have a vest of the satin as used for the inset and let the edges of your waist droop. By attaching your jacket and skirt at the low waist there will be an opportunity to obtain the longer skirt, which should be no more than five or six inches from the floor line. The slashed pockets will in no measure detract from the frock if it is made of a material which will give you a most attractive frock.

the dolman line. This latter named sleeve is well suited to the jumper dress for a remodeling. However, if you have a skirt made up your mind that the velvet must be an evening gown then have the dress of silver lace and the skirt used in the same way. The high side only. The waist made in the blouse and long-waisted line with the short cap sleeve and the velvet placed in the strap effect on front and back of waist. You will require 3/4 yards of lace in the 40-inch width.

BEAVERTON. Or.—Dear Madam Richet: Would like your advice in making over a dress of inclosed material and will be trimming or suitable material is suggested. If possible I would like a pattern if you could give me the pattern and material. The dress at present is made with waist to normal waist line and three-piece skirt. It has two pieces 12 inches long and 11 inches wide, one piece 15 inches long and 10 inches wide. Sleeves are long and full to elbow. Skirt is made in two pieces, 37 inches long, front piece 16 inches wide, back piece 48 inches at waist. It has 31-inch waist. I am 5 feet 7 inches tall, 95-lb. bust, 28 waist, 43 hips, dark blue eyes, brown hair, medium complexion. Which colors would I wear best? Acs 28.

Mrs. Ethel M. Johnson, Beaverton, Or.—For your dress, which by the way you do not mention as to a vest front or plain, I would suggest a model whose scheme of embroidery will be the feature of change and, too, the in-set of waist will allow more freedom of blousing than you now have. With your material have the sleeves made with the hand-work in the blue and black worsted and made after the dress shown in the Butterick Quarterly, page 35, No. 2747. Make your skirt as shown in the picture. For your sister's dress the same material, but in combining it with a printed crepe, binding the edges of her dress with the crepe ribbon. The type pictured in the September Delicater, page 25, No. 3925, will be a splendid guide.

MT. SOLO, Wash.—Have a blue serge suit tuxedo jacket—the jacket is 28 inches long and has six pockets. The skirt is 37 inches long and has six pockets. I also have a blouse waist and use the same material for the skirt. I have like sleeves made on the lining as I have so much trouble with the light blue hair and eyes. Mrs. B. G.

Mrs. E. G. Mt. Solo, Wash.—Join the skirt and blouse with a black or a satin-skirt, either in a black or a blue matching your material. Use your present skirt for the bodice, four in number and as wide as becoming, but not more than ten inches and all longer than the satin drop. By having the long waistline in the skirt, the length will be panels. Cut the large sleeve eye and have the wide sleeve of satin with the half-inch width of serge trim at the beginning of two inches from the bottom edge of your sleeve and placed at intervals of a half inch. The skirt panels should have the same trim with the satin strips. The vest of satin edged with one-half inch strip and the girde a combination of the serge and serge braided in an inch strip.

PORTLAND.—Would you kindly advise me in regard to using materials (samples enclosed) in combination for the dress and make it in a blue skirt, 33 inches long and 2 1/2 yards wide. I have thought of using pattern 3969 in September Delicater. The two materials are a blue and a white. I would like to use the blue for the bodice and the white for the skirt. Both are in good condition. Mrs. W. W.

Perplexed.—Your letter is so lacking in continuity that I am sure you have omitted many lines you perhaps meant to write. Please write again and on one side only, and I shall be glad to be of service to you. Also enclose the samples which were missing.

160 and my measurements are 27 inches bust, 36 inches waist, and 40 inches hips. Have light brown hair and blue eyes. I wish to do a quite nice evening dress of a light color, which is worked in black silk thread and beads. The black ran into the white the very first time it was washed. Is there anything I can do to take this stain out, or might I have it dyed to blue? M. B.

A. M. B.—For the classroom you should have the dress of serge in either the blue or the fawn shade and in the same color as the blouse in the peasant cross-stitch. The roomy arm size and the comfortable neck, having good pockets, will make it difficult to make a dress in the McCall's fall quarterly, page 35, No. 2841. The sport skirt is a tweed or blue and the slipover sweater of harmonizing shade always makes a splendid and good-looking outfit for the school.

Dear Madam Richet: Will you please help me plan a dress for winter. Sample No. 1 if it had been made into a tunic or a dress for winter. I have a piece of material 31 inches long, 48 inches at bottom, 44 inches at waist, and 30 inches long, 16 inches wide at one end, and 16 inches wide at the other. It is 35 inches long, 16 inches wide. Would it be all right to combine with a taffeta lining in the same color as the taffeta making a long waist joined to skirt by piping or embroidery. I am 5 feet 6 inches tall, weigh 111 pounds, have dark hair, blue eyes, and a clear complexion, but very little hair.

LUELLA.—Of all lucky people I should say you were among the best for your materials are not only interesting in texture but color. For the blouse have a long waist of the fawn canton to the yardage of one and three-quarters. Join to the material as per sample at a long waist and let the blouse be made of the canton buttons, small in size. Square neck line and rather closely fitted sleeve, wrist length. The neck line very happily link the skirt feature by making a band by cutting out of your frock a very new touch. The frilled trimmings are being shown in the picture.

WOODBURN.—Or—I have a dark blue tuxedo suit, almost black, tuxedo style. It has a high collar and a high collar. This is all wool tuxedo of good material. I need it, but I could use it. I also have a brown velvet winter coat, which is very nice. Do you think I could put fur collar and cuffs and fur bottom of the skirt? Mrs. L. C.

Mrs. C. Woodburn, Or.—The velvet coat and the skirt which is being used with the serge and the tuxedo suit. The vest brought up the number and with a high standing collar will be seen on the winter models. Some of the collars have the turnover collar in the picture. The velvet coat you mention will be very much up-to-the-minute, with the fur used in the manner you have in mind. The skirt models which are always leaders for the later styles, show the entire skirt to have the same trim with the lower half of fur, so you see you should follow your plan of remodeling.

GREENHAM.—Or—I have a black charmeuse dress like sample, made like enclosed picture. The panel, collar and sleeve like the sample. The front V-shaped piece is also of green. I wish to know if you can give me in what color, or black? I am 5 feet 3 inches, weigh 130 pounds, have auburn hair, blue eyes, and a clear complexion. I do not like things over-trimmed. Mrs. G. W. M.

UNIVERSAL THE TRADE MARK KNOWN IN EVERY HOME LANDERS, FRARY & CLARK, NEW BRITAIN, CONN.

Quick Warmth and Cheer on Chilly Days THE UNIVERSAL Portable Electric Radiator performs a multitude of pleasing services in the home. For chilly days, in nursery, bath room, for sewing room, or sitting room; for drying clothes in the laundry. And it is not only beautiful when operated in a dark room but is an artistic ornament in the daytime. There is a UNIVERSAL Electric Home Need to meet every demand. The Roundhead Iron shown is made on a new principle and will iron backward or sideways as easily as on the forward stroke. The UNIVERSAL Electric Curling Iron is necessary in every boudoir. Toasters, grills which prepare a complete meal right at the table; waffle irons, UNIVERSAL Percolators famous for beauty and utility; laundry irons and heating pads—all these and many more can now be had at lower cost than for years.

UNIVERSAL Electric Radiator, \$6.75 to \$12.00. UNIVERSAL Electric Curling Iron, \$6.75 to \$7.25. UNIVERSAL Electric Waffle Iron, \$6.75 to \$7.25.

Sage Tea Darkens Hair to any Shade WHEN you darken your hair with Sage Tea and Sulphur, no one can tell, because it's done so naturally, so evenly. Preparing it is simple, though, at home is messy and troublesome. At little cost, you can buy at any drug store the ready-to-use preparation, improved by the addition of other ingredients, called "Wyeth's Sage and Sulphur Compound." You just dampen a sponge or soft brush with it and draw this through your hair, taking one strand at a time. By morning all gray hair disappears, and after another application or two your hair becomes beautifully darkened, glossy and luxuriant.

Anti-Fat Causes Divorce. LONDON.—Anxious to have a waist "like a wasp," the wife of a Berlin tradesman followed the instructions of an anti-fat doctor. In the course of a few weeks, she reduced her weight by one-third. Incidentally, however, she became extremely pale and in the eye of her husband, lost her personal charm. He applied for a divorce and the court granted his claim.

MOTHER Move Child's Bowels with "California Fig Syrup" Blackheads Go Quick by This Simple Method Blackheads—big ones or little ones—soft ones or hard ones—on any part of the body, go quick by a simple method that just dissolves them. To do this, simply take one ounce of calomine powder from your drugstore—sprinkle a little on a hot washcloth and rub the face and neck briskly for a few seconds—and wash off. You'll wonder where the large and unsightly blackheads and squeezing blackheads only open the pores of the skin and leave them large and unsightly—until the simple application of calomine powder and the water dissolve them right out, leaving the skin clear and the pores in their natural condition. Adv.

Broke His Vow "After trying all remedies and doctors for stomach trouble for eight long years I decided I couldn't be helped any more. I was told to take another dose of any kind of medicine, but when I saw what 'Mother's Wonderful Remedy' did for a friend who also suffered from bloating as I did, I concluded to try it myself. It helped me at once." It is a simple, harmless preparation that removes the cause of stomach trouble from the intestinal tract and allows the inflammation which causes practically all stomach and liver troubles to subside. It contains no harmful ingredients, including opium, etc. One dose will convince or money refunded. For sale at all drugstores. Adv.

English Woman Comes to America Spends Thousands in Search of Health Beauty Unsurpassed The wonderfully refined, pearl-white complexion rendered, brings back the appearance of youth. Rapidly restores faded, highly sensitive, sensitive, soothing action. Over 75 years in use. Send 15c for Trial Size. FERRIS T. HOPKINS & SON. Gouard's Oriental Cream

Reports From Physicians. "I congratulate you on the good effect it had from Adierka. I am 66 years old." (Signed) Dr. L. Langosta. "I have found nothing in my 30 years practice to equal Adierka." (Signed) Dr. James Weaver. "I use Adierka in all bowel cases. Some require only one dose." (Signed) Dr. F. M. Poytman. "After taking Adierka I feel better than for 20 years. Haven't language in expressing the benefit. My bowels were constipated from my system." (Signed) J. E. Pickett. "Adierka is a constant surprise to people who have used only ordinary bowel and stomach medicine, on account of its rapid, pleasant and COMPLETE action." (Signed) Dr. J. E. Pickett. "It is sold by leading druggists everywhere. You may order it from me, if you prefer thought you."