

DRIVING DANGEROUS ON WET PAVEMENT

Autoists Are Warned to Be More Careful.

ACCIDENTS ARE MANY

Casualties From Skidding After First Rains Numerous and Can Be Avoided.

Drivers should exercise more caution in the operation of their cars on wet pavements. Summer showers are likely to make the streets and roads dangerous after a considerable dry period...

Tactics for driving on dry and wet streets are different and it is the measure of a driver to be able properly and safely to handle a machine on both kinds of streets.

A good driver is one who correctly judges his road and knows what it will do. Too many fall to realize the differences and go ahead blindly and wonder how it happened when they find themselves in a jam...

On a wet street the driver should realize that to speed is to tempt fate. This is especially true when making turns. The old law of physics that a body in motion tends to keep in a straight line is especially motoring as elsewhere...

The safety procedure when making a turn is to slow down to a reasonable rate and not try to turn too short. Then, too, if the street is one on which car tracks are laid, it often helps to have one wheel on the stone block paving between the car tracks.

Another thing the motorist has trouble with on wet streets is stopping. Here the inclination to make a dashing stop with brakes jammed is the great trouble-breeder.

In wet weather all stops, save emergency stops, should be made with as little use of the brakes as possible. This is true at all times, but more particularly so when the pavement is slick.

Skids are dangerous things. A car once started on a skid is a difficult thing to control, and the damage done may be great before the careening car is brought to a standstill.

In skidding everyone nearby is imperiled. It is only too often that a when a car is skidding, it is the one injured or killed by skidding. The danger is obvious, and the driver of a machine should do everything in his power to prevent his car from skidding.

One of the first things to do when you feel the rear end swinging around is to slow down. That takes the impulse off the drive wheels. Then turn the steering gear toward the direction of the skid. This means that if the rear end starts sliding off to the right the wheel should be turned to the right.

Now, this should be done with caution, for too great a turn will cause the rear end to career around violently in the other direction, and all control is then lost.

The amount of the turn is entirely up to the driver and depends on the extent of the skid. The driver can feel when the skid is checked, and the steering wheel should be turned no farther, or the business of whipping back and forth across the street will be started.

Above all things, though, slow down when the car begins to skid.

Tourists, Beware of Burg of Davis, Cal.

Travelers Taken Before "Unjustice" and Soaked to Limit.

PORTLAND, Sept. 16.—(To the Automobile Editor.)—Having recently returned from an auto tour of California, I feel it my duty to relate a certain incident that it was my unfortunate lot to witness, to the end that all Portland motorists who contemplate a California trip may profit by my experience.

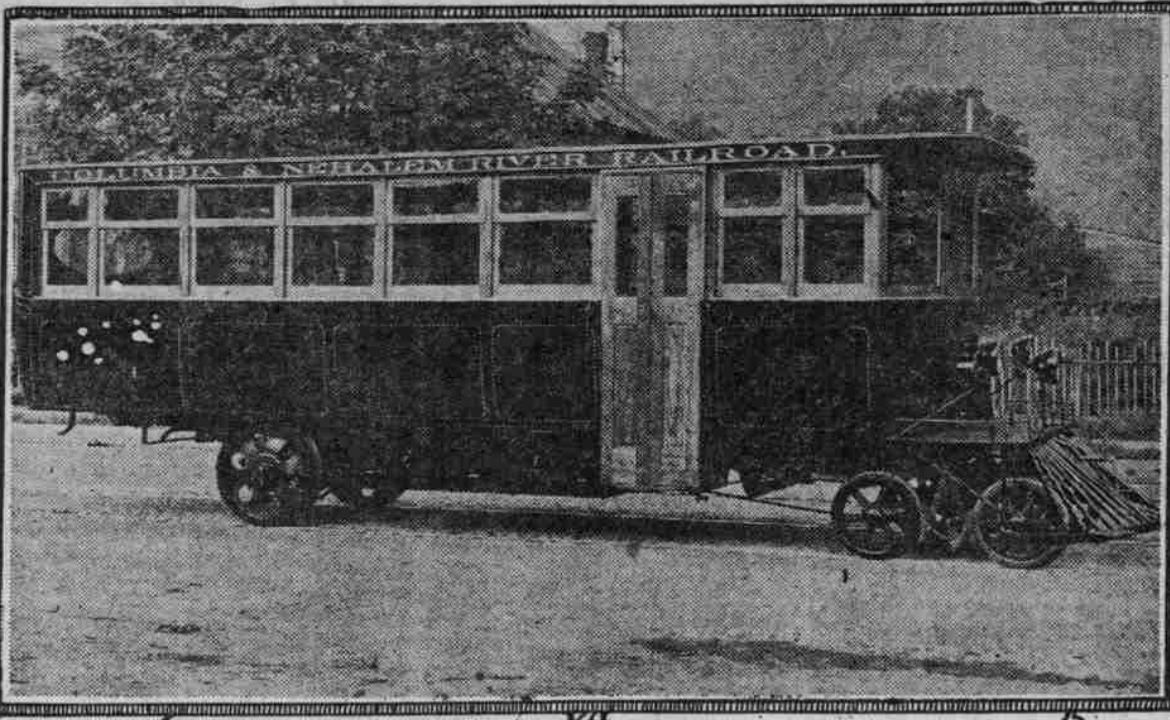
Davis, a small California town about 80 miles north of San Francisco, lies about a mile off the Pacific highway. What it misses in tourist trade the village has determined to offset by enlisting the unsuspecting tourist by means of a speed trap it has placed along the highway about a mile southwest of the town.

Here all tourists who may exceed the limit even to the slightest extent are stopped, haled before "Unjustice" of the Peace, Mr. Scott, and soaked to the limit. Tourists, beware of Davis!

To illustrate the benefit of these warnings to brother tourists I cite the following instance: Last May an Oregon tourist was fined excessively for a minor infraction of the speed law in Yreka, Cal. He wrote an account of his misadventure to The Oregonian. For one, he was fortunate enough to read it. On the trip south I informed two Yreka merchants of the reputation his town had up north. He informed me that the town had been a heavy loser by the publicity given the incident & Oregon tourists ignore the town, purchasing supplies at the other localities.

Novel Truck Perfected. The newest thing in trucks for building contractors is one fitted with a body which, having been loaded with bricks, can then unload them already piled.

WHITE MOTOR TRUCK USED ON RAILWAY LINE INTO THE NEHALEM SECTION.



LATEST EQUIPMENT FOR RAILROAD BUSINESS IN OREGON. Light passenger traffic on railroad lines all over the country is being handled more and more by motor buses fitted with flanged wheels. The latest local development of the kind is shown above, a White railroad bus just put into operation by the Columbia and Nehalem River railroad.

UNPRECEDENTED CALL FOR CLOSED CARS IS PREDICTED

Open Machine Rapidly Becoming Luxury, Says Head of Jordan Motor Car Company.

CLEVELAND, O., Sept. 23.—How many dealers will survive a period of keen competition? These questions have been partially answered in the regular semi-annual survey of the motor car industry conducted by the Jordan Motor Car company. Edward S. Jordan, through his contact with thousands of dealers throughout the country, manufacturers, bankers and business men, thinks he has the answer to all of these questions as far as any human being is able to predict the future.

WALLA WALLA PAVING DONE. Most of Bad Detour on Inland Empire Route Eliminated. WALLA WALLA, Wash., Sept. 23.—(Special.)—Paving of the seven-mile stretch from Watsburg west has been completed and as soon as the concrete cures tourists will have

differentiated between the open and the closed car will be slight, eventually the demand of the public will be for inclosed bodies of quality. "Summing up the whole automotive situation for the next six months, those manufacturers who build inclosed cars of substantial, lasting quality will move more rapidly forward than those who are either not prepared for increased closed car production, or who are not building inclosed cars of quality."

The New Gardner Sedan. Good-Looking, Well-Built and Priced Right. The Ideal Family Car—beautifully finished in special Gardner limousine blue, with hard-baked black enamel fenders and nickel-plated, satin-finished hardware inside the body—embodies all the little luxuries and the durability and performance qualities of the high-priced motor coach.

When such important qualifications of closed car value as equipment—comfort—convenience—appearance and price are considered, the Gardner Sedan will give a good account of itself—any time—anywhere.

Advertisement for The Gardner Motor Co., Inc. featuring the Gardner Sedan and Mitchell tires. Includes contact information for Spokane and Seattle.

UNIFORM LAWS FAVORED

TRAFFIC RULES ARE URGED FOR STANDARDIZATION.

Accidents on Highway Could Be Greatly Reduced, Says Expert in Federal Service.

WASHINGTON, D. C., Sept. 23.—Accidents on the highways could be greatly decreased by the passage of uniform state laws requiring every truck to carry a mirror giving a view of the road immediately to the rear and by requiring every horse-drawn vehicle, as well as automobiles, to display some sort of light when using the roads at night.

SAFETY WORK IS EFFECTIVE

Accidents Being Cut Down in Proportion to Number of Cars.

It is reasonable to believe that highways will have a better safety record in 1923, because the public is increasingly awake to the fact that individual transportation brings individual responsibility. Massachusetts halved its accident record in one year. "Twenty-eight cities have reduced their motor fatalities since 1921."

OVERLAND SOLD BY RADIO

Wireless Phone at Toledo Plant Told to Unusual Service.

TOLEDO, Sept. 23.—The demand for Overlands is so great that they are ordering them by radio. Probably the first bona fide sale of an Overland car by radio was the one completed last week by Leo Nachtrab, one of the leading salesmen of the Willis-Overland branch at Toledo, O.

During the next 90 days, or the first half of the first period, there will be a great shortage of inclosed cars. Only a few manufacturers in the industry have been far sighted enough to organize their production sufficiently in advance to take care of the demand.

The average prices of automobiles will be increased during the next 12 months. "This will be due to the extraordinary demand in the open car field for what is known as a four-passenger sport model."

Added to this factor will be the increased cost of building inclosed cars against open cars. It will not be possible to build inclosed cars on the same price basis as the open cars because they have to be built much more substantially. While for the first year it will appear that the

will swerve about the time the passenger car is about to pass, and this means an accident. As for the light on a horse-drawn vehicle, the need for it is obvious, as a motorist coming up behind such a vehicle and perhaps blinded by the headlights of a car coming from the opposite direction, cannot see the horse-drawn vehicle until he is right on it.

The public is laughing the "auto-boob" out of existence. Local, state and national educators are training children in proper conduct on the highways. The safety season is now on.

In Pennsylvania a passenger automobile used as a truck regularly to carry supplies is classed as a commercial vehicle.

ROAD COURTESY IS NEXT

GREEN AND WHITE STICKER WILL ADORN MOTORCARS.

Unique Movement Launched With Idea of Reducing Highway Accidents to Minimum.

WASHINGTON, D. C., Sept. 23.—Automobiles in all parts of the United States will soon be bearing on their windshields a little green and white sticker with "Automobile Courtesy" in large letters over the name of the local automobile club indicating that the driver of this car is observing the courtesy campaign being conducted by the American Automobile Trade association in connection with the Chicago Automobile Trade association and the National Automobile Dealers' association.

get by and is not challenging us to a race; in short, it means being agreeable in all these little things that go so far toward avoiding friction."

The American Automobile association in taking up with its 300 affiliated clubs the question of carrying on this campaign is impressing the need for careful observance of traffic regulations as one of the elements of a courtesy campaign. The traffic officer, the Association points out, is only a human being placed in a difficult position because of the necessity of enforcing these regulations and a little courtesy toward him will eliminate many of the trivial arrests that now clutter up our traffic courts.

DETROIT HAS MOTOR CAMP

Stream of Tourists Constantly Pouring Into "Auto" City. Detroit, the motor city, has been without a camping ground for automobile tourists until recently, when the Detroit Automobile club took steps to obtain some kind of camping place for the great army of auto travelers that nightly seeks a place to pitch tents.

Large advertisement for Hudson automobiles. Features the Hudson Super Six and the New Sedan. Includes the slogan "Averages better than 16 Miles to the Gallon" and "The De Luxe Car of the Year".