

RICHES OF WEST TO BE IMPRESSED

Park-to-Park Body to Show Nature's Beauty.

APPEAL WILL BE REAL

Effort Will Be Made to Induce Tourists to Linger Longer to See Sight.

DENVER, Colo., Aug. 12.—As further evidence of the broad purposes of the National Park-to-Park Highway association there are now in the office of the manager plans being made which, carried out, will educate not only the matured mind, but the school children of the nation to the many advantages of the western portion of the United States. The association believes that too much has already been said of the commercial and industrial attractions without featuring that which actually educates prospective settlers in a choice of country he desires to make his home.

There has been, and is yet, so much rubbish in booster publications distributed free and sold to the public, that no one can believe, not even the man who comes in contact with the source of the information finds it reliable. Opportunities are colored, scenic attractions are commercialized and thereby cheapened, recreational places are thought of only in the sense of the dollar, geology has been belittled with fictitious and misleading localized names and descriptions, botany is unknown by natives and plants as well as trees have received local names. In other words, the entire scenic and productive west has been exploited for commercial reasons, giving little consideration to the fact that everywhere there are lessons to be thought in nature's handwork that go further toward making Americans than the mere thought of riches.

West is Richer.
The west is richer in nature's attractions than any other country, but its real purpose, in the eyes of the good, is being missed. This is not true of the activities of the national park service which most admirably, in the interest of the public, conducts the national parks and national monuments in its charge, nor is it true of the forest service, which most ably protects the forest and recreational places within its borders, but it is true in many other wonderful places along the national park-to-park highway which connects with one highway all of the national parks in the Rocky mountains and on the Pacific coast.

The plans being formed in the general office of the association by Gus Holms, the managing secretary, are, briefly speaking, a set of publications covering separately the following subjects:
Scenic attractions, recreational places of interest such as forests, lakes and streams, free to the public. Historical places of interest; many of these attractions are found directly on or as side trips from each community center.
A complete publication on formation, geology and geology over the entire 4800 miles.

Highway Made Attractive.
An absolutely reliable publication on trees and plants found growing along the highway or on side trips. In other words the national park-to-park highway is to be geologized, botanized, mapped, charted and signed to assist the private automobile travel to linger a little longer in each community that has attractions to offer.
It is generally recognized that there is no highway in the world that offers so many different climatic conditions. While passing over nine ranges of mountains and through many fertile farming and fruit-growing sections, everything that is grown in the west can be found on this highway, to say nothing of the many other industries such as mining, lumbering, shipbuilding, and many other kinds of manufacturing.
It is the desire of the National Park-to-Park Highway association that only truthful information and advice shall be given to its many patrons and it is the purpose of its thousands of members to see that it will be done. The business of the association is conducted through the executive committee, and a board of directors with general offices in Denver.

HUP PRICES ARE LOWERED
New Schedule Received by A. B. Manley, Local Distributor.

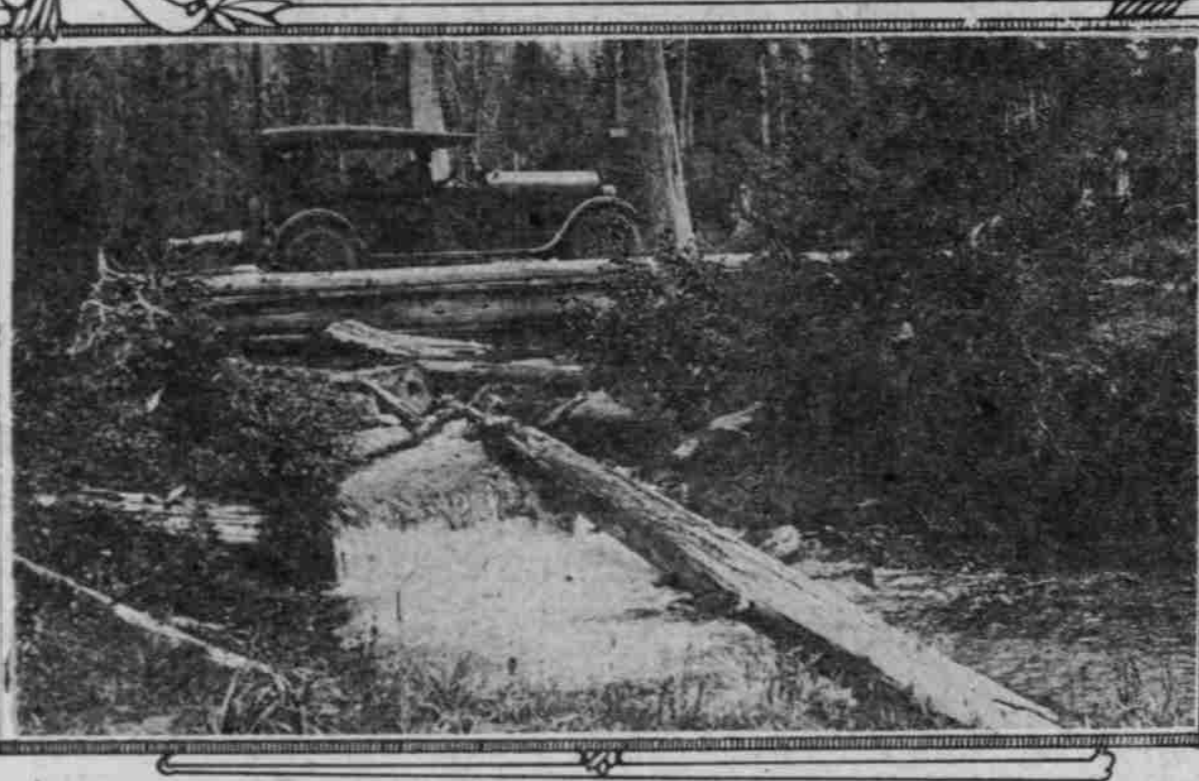
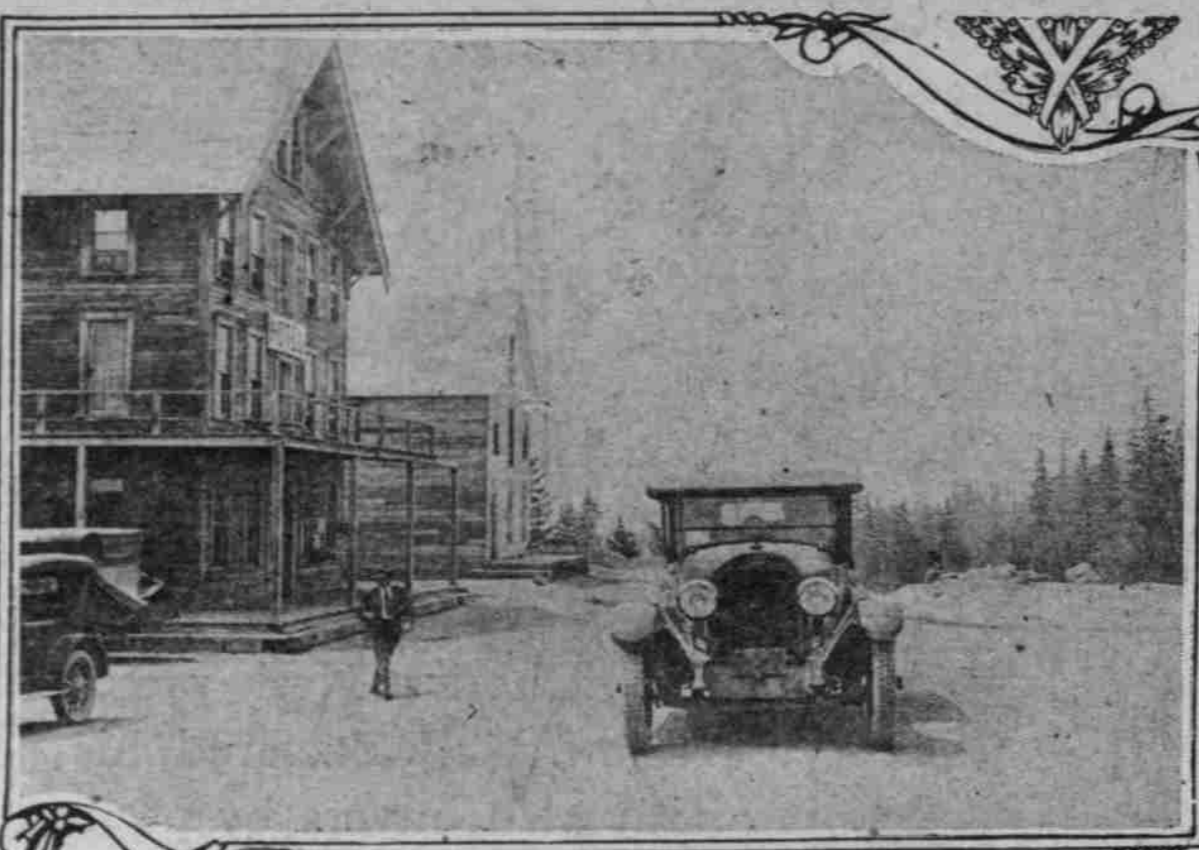
The Hupmobile was added to the list of automobiles which have dropped their price during the present price flurry, according to the new price schedule received last week by A. B. Manley, head of the Manley Auto company, local Hupmobile distributor. The Manley firm announced a guarantee of existing prices, providing a refund to purchasers if the price should be dropped, and followed this up after a few days with a new schedule bearing a substantial reduction. The new prices are from \$112 to \$208 under the former list, according to a study of the new figures given out by Mr. Manley. The drop on the touring car is \$119, while the reduction on the closed model reaches the larger figure. The new schedule puts the Hupmobile five-passenger touring model under \$1400, Portland delivery, this being, it is asserted, the lowest price which has ever applied on the present Hupmobile series.

FAGAN BACK AFTER ILLNESS
Wills Sainte Claire Distributor Taken Sick in Seattle.

C. C. Fagan, head of the Chas. C. Fagan company, Pierce-Arrow and Wills Sainte Claire distributors, is receiving congratulations on his rapid recovery from an illness which kept him at a hospital in Seattle for over two weeks. He returned to Portland last week and was able to be at his desk.
Mr. Fagan was taken suddenly sick with appendicitis while on a business visit in Seattle. The attack was so sudden and severe that it was impossible for him to return to Portland and he was taken to a Seattle hospital where an operation was performed. Upon his return last week Fagan declared he was mighty glad to be back to work and opined that a hospital was a poor place to spend a vacation anyway.

Perfect Muffler Invented.
According to recent announcement

SOUTH SIDE OF MOUNT HOOD HAS MANY ATTRACTIONS FOR VACATIONIST.



Above—View of Government Camp hotel, one of the several excellent resorts on the south side of Mount Hood. It is from this point that parties climbing Mount Hood from the south set out. Below—Attractive mountain stream on the mountain road a short distance east of Government Camp. The car in both photos is a Lexington.

made by the Bureau of Engineering of the United States, their experts have now practically perfected a muffling device which not only affords almost complete muffling but with a very light back pressure.

HONOLULU THEFTS MANY
Practice Is to Drive Stolen Car and Then Push It Over Cliff.

HONOLULU, T. H., Aug. 12.—The

theft and consequent destruction of automobiles in Honolulu has become so frequent that the three leading insurance agencies have threatened to withdraw entirely from insuring automobiles or to place the rates at practically a prohibitive level unless immediate steps are taken to curb the thefts.

It is estimated that 50 automobiles have been stolen and wrecked since the first of 1922 in Honolulu. The favorite practice of the thieves is to steal an automobile, ride for an evening and then let the automobile

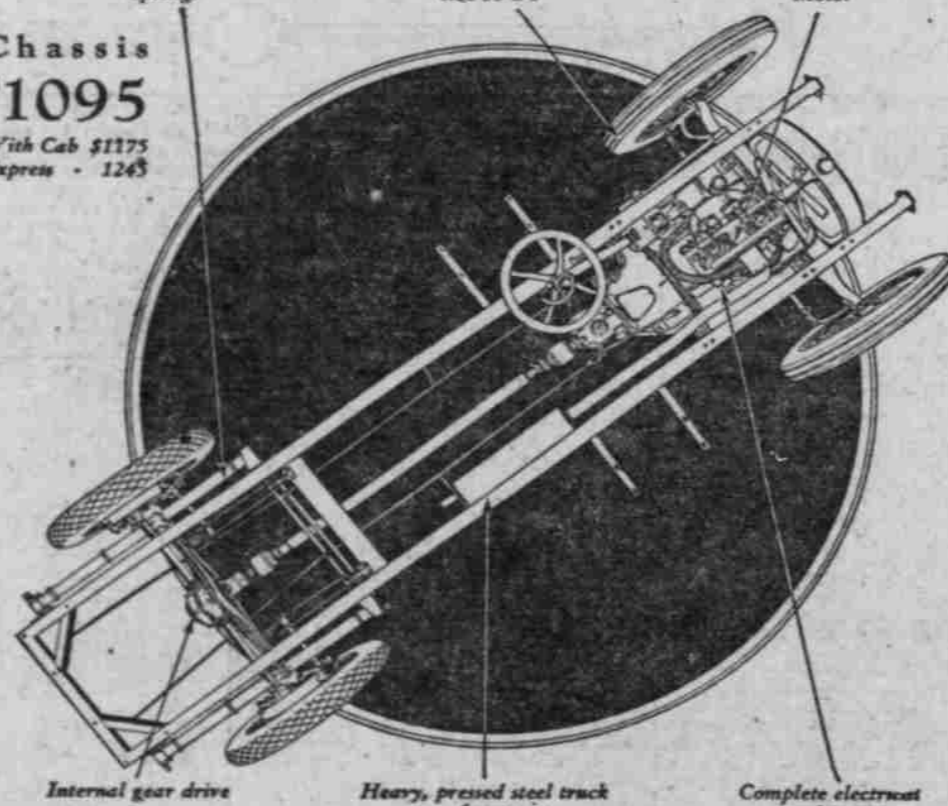
go over one of the many high cliffs on the island to destruction on the rocks below. The belief has been expressed that one gang is responsible for most of the thefts.

Argentina Needs Trucks.
A splendid field for motor trucks and tractors should be the corn-raising areas of the Argentine, which next to the United States, is the largest producer of this crop in the world.
Keep your eye on the oil.

The lowest priced ONE TON TRUCK is built of the BEST, MOST LASTING TRUCK UNITS

Long, high quality steel springs Large pneumatic cord tires, size 35 x 5 40 H. P. Valve-in-head Motor

Chassis \$1095
With Cab \$1175
Express - 1245



At \$1095 the Oldsmobile Economy truck is the lowest priced one ton haulage unit of recognized truck specifications. All of its units are truck units, scientifically made and designed to best withstand the hardest sort of service. Let us demonstrate this remarkable truck to you.

Oldsmobile Co., of Oregon
Broadway at Couch Street Broadway 2270

Oldsmobile ECONOMY Truck



Ask us about the G. M. C. extended payment plan

IDEAL SECTION IS BEGUN

WORK ON LINCOLN HIGHWAY STRETCH IS ON.

Mature Thought of 15 Foremost Engineers is Embodied in Design.

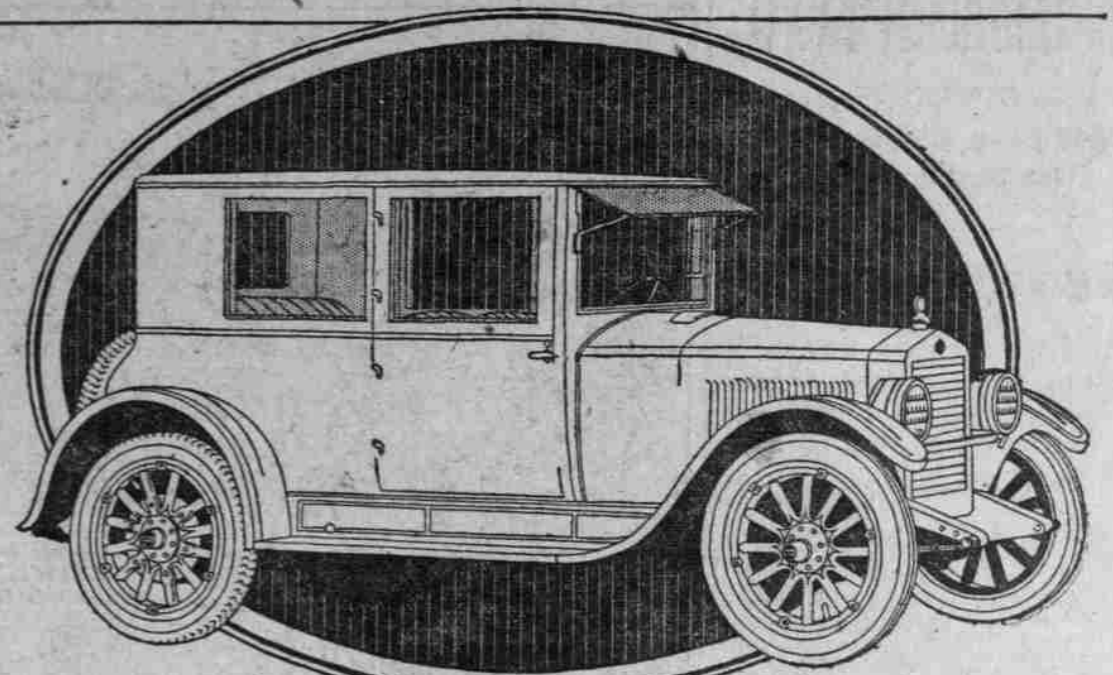
CHICAGO, Ill., Aug. 12.—Construction work on the far-famed stretch of model highway known as the Ideal section of the Lincoln highway in Lake county, Ind., is now under way after nearly two years of preliminary research. In addition to \$22,000 per mile provided by the state of Indiana, Lake county authorities have assured \$25,000 from the county funds toward paying for the construction of the section. Extra expense beyond the sum supplied by the state and county, which is equivalent to what the construction of the usual state specifications would cost, will be met by the Lincoln Highway association through a special fund provided by the United States Rubber company.

It is expected that the paving work will be completed by the end of October, many details including the lighting installation and the beautification of the right-of-way remaining for accomplishment until next spring.

In the design of this unique section of the Lincoln highway is embodied the mature thought of 15 of the foremost experts in highway engineering and construction and related problems in the United States. Acting as the technical committee of the Lincoln Highway association, this committee drew up the specifications for the section.

While it is not expected that many states can undertake in the near future highway improvements embodying all of the principal elements of the Ideal section design, it is felt by the Lincoln Highway association and the officials of the United States Rubber company that the design will be suggestive and will tend to bring to the attention of the American public the vital necessity of adequacy in present day specifications if the vast sums which are now going into highway construction are to serve properly the America of today and tomorrow.

ESSEX COACH \$1295



You'll like it as all owners do

A ride will show you why everyone is praising it. The Coach gives closed car utility, comfort and distinction at little more than open car cost. It is a delight to drive. Operating cost is low. Requires little attention. Is beautiful and reliable. Come take a ride today.

Touring, \$1095 Cabriolet, \$1195 Coach, \$1295
Freight and Tax Extra
C. L. BOSS AUTOMOBILE CO.
615-617 Washington St.

(461)

Free from destructive

The proved way to prevent many lubricating troubles

"Sulpho" Compounds

Oil experts tell you that the destructive "sulpho" compounds in motor oil reduce its lubricating value. These impurities cause the oil to break down and thin out almost immediately under engine heat.

Cyclol is the motor oil from which destructive "sulpho" compounds have been removed. The new Hexeon Process, used only by us, does it. Cyclol does not break down nor thin out rapidly under engine heat—Cyclol maintains an unbroken lubricating film—Cyclol prevents many motor troubles.

Prove it yourself! Flush your engine with fresh lubricating oil, not so-called flushing oils or kerosene, and refill with Cyclol.

Different brands of motor oils have different bodies. The safest, surest way to get the best performance from your motor and avoid expensive engine troubles due to incorrect lubrication is to use the grade of motor oil specified on the Cyclol Lubrication Chart.

CYCOL

MOTOR OIL

ASSOCIATED OIL COMPANY
Executive Office 79 New Montgomery St.
San Francisco, California