

LOCAL JURIST BACK AFTER LONG JAUNT

Judge Cake and Son Come From Boston by Auto.

ROADS FINE, IS REPORT

New England States, Canada and South Atlantic Coast Also Visited on Trip.

That a cross-country trip by automobile, from the Atlantic to the Pacific, can now be made with perfect ease and comfort, provided the motorist gives ample time for the journey, is the testimony of Judge W. M. Cake, prominent Portland attorney, who with his son Harold Cake arrived home last week after a motor jaunt of nearly two months from Boston, Mass. There is no really bad road, the entire distance and many miles of the route are paved, Judge Cake declared.

The motor trip, which also included in its scope the New England states and the south Atlantic states, was decided upon rather suddenly and happened in this wise: Judge Cake's son, Harold Cake, was to graduate with his class at the Massachusetts Institute of Technology. Judge Cake intended to make a trip east partially for business reasons and partially to attend the graduation exercises. The judge had just ordered a new Cadillac car from the Covey Motor Car company, local distributor. Shortly before leaving for the east the judge suddenly formulated itself of obtaining delivery on the new Cadillac at the factory at Detroit, Mich. and then driving home. Arrangements were made through the Covey organization here and Mr. Cake went east on the train.

After visits at Washington, D. C. and other cities Judge Cake went to Detroit, where he was met by his son Harold. Between the two of them they picked out the new Cadillac and drove it back to Boston for the graduation exercises. Following that event they made a tour of the New England states and up into Canada as far as Quebec and Montreal, returning via New York state and stopping at the metropolis. From New York they then drove south through Philadelphia, Gettysburg, Baltimore, Washington and the historic Shenandoah valley into the Carolinas, Tennessee, Alabama and Georgia. The return was made through Kentucky and up to Cincinnati and thence over to Pittsburgh.

After this interesting jog southward they began the journey home, coming via Cleveland, St. Louis, Kansas City, Denver, Colorado Springs, Cheyenne, Yellowstone park, Spokane and Pendleton. On the trip Judge Cake and his son were accompanied by William Matthews of Spokane, young Cake's roommate at the Massachusetts Institute of Technology. The trip was also with the party for a time, but did not make the last portion of the trip, having to come home by train because of lack of time.

"When we arrived home our Cadillac showed over 8000 miles on the speedometer," said Judge Cake, "as far as I could see the car looked as good as the day we got it in Detroit and we had no difficulty whatever on the way."

East Building Roads. The east is making splendid strides in road construction, he declared, and through the eastern and New England states it is now possible to tour the entire country without getting off pavement. Paved road now runs from Maine to St. Louis, Mo., 1800 miles or more, he declared. In every state we visited road improvement is an important subject before the officials and large jobs of construction work are under way," declared Judge Cake. Every state we passed through has now worked out a comprehensive state-wide system of roads similar to Oregon's system in scope, with the exception of Kansas, where we understood the matter is handled by the counties. The only really bad roads we struck on the long trip were in Kentucky and Tennessee, and even in these states evidence of progress were to be seen. In most of the other states the roads were splendid and were evidence of the wonderful progress made in road building during the last few years.

TACOMA AUTO THEFTS HIGH

Over \$10,000 Worth of Cars Stolen During July.

TACOMA, Wash., Aug. 12.—(Special.)—Automobiles valued at more than \$10,000 were stolen in Tacoma during the month of July. Of the 18 cars stolen 14 have been recovered. Such is the report of the traffic department of this week. Approximately \$2000 worth of cars have been recovered by the department that were stolen in the city, the report says, and eight automobiles of a total valuation of \$4275 were recovered by the local motor vehicle department for other cities in the northwest.

This has been one of the biggest months for automobile thefts on record this year. It is claimed, the only months that exceeded it being last January, when 22 cars valued at \$40,975 were stolen and 29 cars valued at \$27,150 were recovered by the department, and last June. In June 23 cars were stolen and 25 recovered, but the total valuation was only \$20,235.

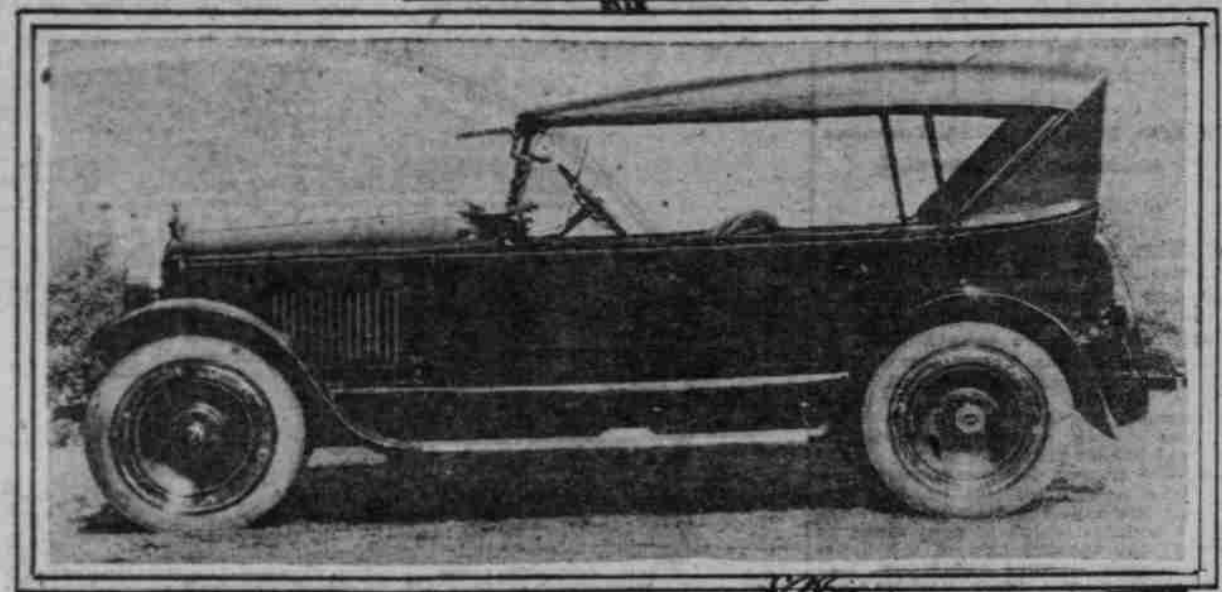
MUNSELL ON CAMPING TRIP

Manager of Mitchell, Lewis & Staver Leaves for Real "Lust."

W. O. Munsell, general manager of Mitchell, Lewis & Staver company, left Portland last Thursday on a pleasure trip through western Washington and British Columbia. Mr. Munsell drove one of the new Jordan "silhouettes" models, and it is his intention to throw off business worries by filling his mind with the problems of setting up camp along the route, he stated. "I am not going to stop at a single hotel," said Mr. Munsell before starting out, "nor am I going to wear a stiff collar for the entire ten days that I am going to be away. I am just going out and enjoy myself thoroughly in the wonderful scenic country with which we are so greatly blessed here in the northwest."

Of every 100 automobiles damaged, ten are struck while parked at the curb.

HERE'S THE VERY LATEST OF PORTLAND'S AUTO ROW. A NEW HAT IF YOU CAN RECOGNIZE IT, PRONTO.



OREGON ROADS LAUDED

STANDARD OIL ARTIST HAS PRAISE FOR SYSTEM.

"The Roadrunner" Contains Several Scenes on Columbia Highway and Other Points.

One of the finest descriptive articles relative to Oregon scenery and roads which has ever been published in brief form is contained in the latest issue of "The Roadrunner," the publication of the asphalt division of the Standard Oil company of California, just received here.

The entire issue of the magazine, which is published at irregular intervals of every few weeks by the big oil company and is eight pages in size without advertising, is devoted to Oregon scenery, and contains 12 illustrations and a map. Many of the illustrations show scenes on the Columbia river highway. Front cover photograph is a scene of Crown Point has been used, showing the Columbia river highway and a vista of the river in front and above that point. As an inside frontispiece a view of Multnomah falls has been selected, the view covering the entire page. Other points pictured in the magazine are Mitchell Point tunnel, Eagle creek, Onasota and Twin tunnels on the Columbia river highway, Grater Lake, the Pacific highway in Marion county, heavy timber along the Roosevelt highway in Tillamook county, Mount Hood from Lost Lake, Haystack rock on Cannon beach and a view along the highway from Astoria to Seaside.

Nine of the pictures are used for a double page spread over the center pages of the magazine, with the caption at the center "Some Reasons Why Oregon is the Motorist's Paradise." The entire back page of the publication is given over to a map of the state showing the different types of roads. "Oregon's Well-Planned Highway System," is the subject of the article, and a comprehensive description of this state's roads, both as to their geographical location and as to their condition for travel is given. The magazine should prove of wide value to Oregon from a publicity standpoint, as the magazine has a circulation of over 12,000 scattered throughout the United States, Canada, Hawaiian Islands, England, Australia, South America and India.

WALLA WALLA ROADS GOOD Important Work Being Carried On by State This Summer. WALLA WALLA, Wash., Aug. 12.—(Special.)—The state highway department has done much work in Walla Walla county this summer and by the first of September will have completed 25 1/2 miles of road. This work is being done on the gravelled portions of the inland Empire highway. Completion of this work, and of the paving under way, will give splendid highways through Walla Walla county, north and south and east and west. Work which has been completed is on the stretch between Touchet and Atalla, a distance of 17 miles. This has been scarified, rolled and new gravel put on top. However, the most important part of this improvement is the elimination of the dangerous grade crossing in the center of Walla Walla. The road formerly was a network of tracks where switching was constantly being done. The road now runs through Walla Walla and crosses the

WALLA WALLA ROADS GOOD Important Work Being Carried On by State This Summer. WALLA WALLA, Wash., Aug. 12.—(Special.)—The state highway department has done much work in Walla Walla county this summer and by the first of September will have completed 25 1/2 miles of road. This work is being done on the gravelled portions of the inland Empire highway. Completion of this work, and of the paving under way, will give splendid highways through Walla Walla county, north and south and east and west. Work which has been completed is on the stretch between Touchet and Atalla, a distance of 17 miles. This has been scarified, rolled and new gravel put on top. However, the most important part of this improvement is the elimination of the dangerous grade crossing in the center of Walla Walla. The road formerly was a network of tracks where switching was constantly being done. The road now runs through Walla Walla and crosses the

WALLA WALLA ROADS GOOD Important Work Being Carried On by State This Summer. WALLA WALLA, Wash., Aug. 12.—(Special.)—The state highway department has done much work in Walla Walla county this summer and by the first of September will have completed 25 1/2 miles of road. This work is being done on the gravelled portions of the inland Empire highway. Completion of this work, and of the paving under way, will give splendid highways through Walla Walla county, north and south and east and west. Work which has been completed is on the stretch between Touchet and Atalla, a distance of 17 miles. This has been scarified, rolled and new gravel put on top. However, the most important part of this improvement is the elimination of the dangerous grade crossing in the center of Walla Walla. The road formerly was a network of tracks where switching was constantly being done. The road now runs through Walla Walla and crosses the

Epitaphs.

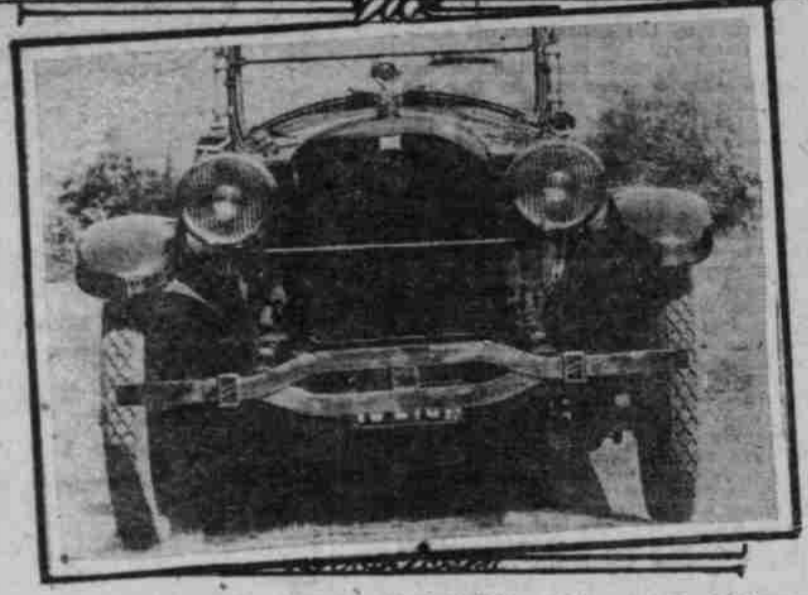
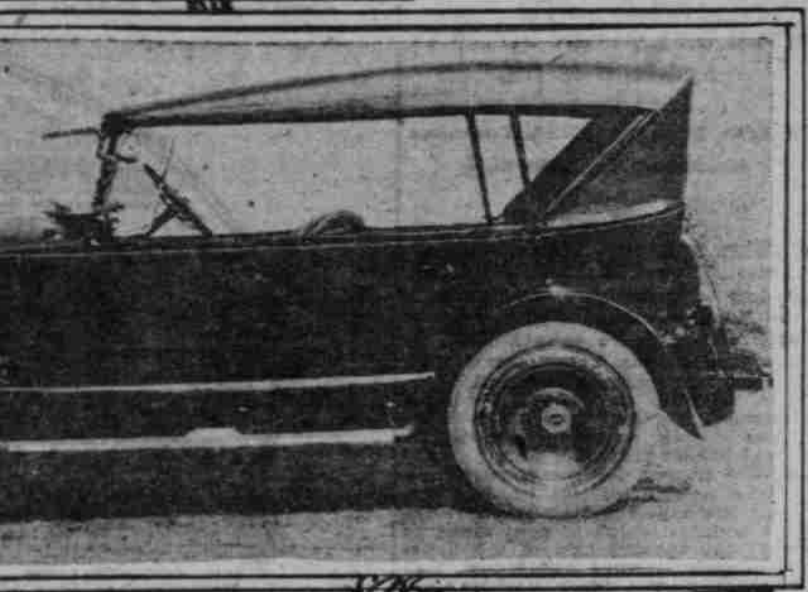
Give thanks, all ye, unto the Lord. Here lies my first and only Ford. I cannot complain of My roadster's endurance. I buried it solely To get the insurance. Caught in the traffic rack. Good-by motor truck. Here lies the body of my sedan. Loose the rest so mortal can. If she bumps or crashes into a landaulet My old sedan would be running yet. —New York Evening Post.

WILLS CAR IN UNIQUE TEST

Auto Goes 20 Miles in High With Man Walking at Side.

With the assistance of a trained athlete as a pace maker, J. M. White of Sioux City, Ia., recently gave a Wills Sainte Claire touring car a test that had a number of unique features, according to a description received here by C. C. Pagan, local distributor. Mr. White's purpose was to demonstrate the car upon its arrival to Goppe to travel at slow speed while in high gear. The route selected was the road from Sioux City to Merville, a distance of 20 1/2 miles. Before the start the chief of police sealed the transmission of the car, the town constable of Merville examined the car upon its arrival to see that the test was fairly made and a motorcycle officer acted as pilot. The athlete who assisted in the test, Gus A. Carlson, walked the entire 20 1/2 miles beside the car, never getting ahead of it. The front fender or behind the rear fender. His average speed was slightly better than three miles an hour, much of the distance being covered at a rate between two and two and one-half miles per hour. The return trip was made in 25 minutes. Moving pictures were made of this test.

"Jay walkers" on motor vehicles and "jay roaders" in highways are the two worst enemies of automobilism. Many fatal accidents have occurred to operators who thoughtfully step on accelerator instead of on the brake.



Broadside and front views of the 1923 Mitchell, a shipment of which was received here last week by Mitchell, Lewis & Staver, local distributors.

It has remained for the Mitchell Motors company of Racine, Wis., to make the most radical change in design for its 1923 car of any of the companies represented in the Portland field thus far. A shipment of several of the new Mitchells was received last week by Mitchell, Lewis & Staver company, local distributors, and the cars put on display at the big show room of the company at the corner of Broadway and Everett streets, where they attracted wide attention. As will be noted from the photos above, the exterior lines of the car have been entirely changed, all sharp lines and square corners being done away with for the rounded lines. The radiator and hood design has been so worked over and the lines of the car worked out on a similar attractive arrangement. Disk wheels, barrel type headlights, bumpers, wind deflectors and a number of other refinements have been made standard. Several mechanical changes and refinements have also been made, although the wheelbase is the same as before and the fundamental sturdy characteristics of the Mitchell motor, chassis and body have been retained.

COAST CORDS STAND UP

ROUGH TEST DEMONSTRATES EXCELLENCE OF RUBBER.

Trip of 100,000 Under Way Thus Far Has Been Made Over Roads That Are Destructive. OAKLAND, Cal., July 12.—Colonel King Stanley and William Spohn, who started from Oakland a few weeks ago in a Chandler car equipped with Coast cord tires for the purpose of making a 100,000-mile tire-testing trip, to date have traversed parts of California, Arizona, New Mexico and Utah and remain exceedingly rough going in parts of the country, especially in Utah. Writing to John I. Pankratz, vice-president and general sales manager of the Coast Tire & Rubber company, Oakland, Colonel Stanley gave some interesting information with regard to the scenic beauty of the trip and stated that, despite unusually rough roads, all four tires show scarcely a scratch and still carry Oakland air.

A message from Colonel Stanley from Winslow, Ariz., reads as follows: "Four days crushed quartz lava beds, 4000 miles roughest going in the country, 2100 miles on Coast tires do not show stone bruises or scratches." Colonel Stanley proposes to visit practically every section of the country before completing his trip and is engaged in charting roads to unusual scenic beauty and interest. He will furnish the Coast Tire & Rubber company with authentic information covering one of the most thorough and scientific tire-testing trips ever made.

Various departments of the government of the 48 states in the union have use of 30,000 passenger cars and trucks. Twenty-three thousand of this total are automobiles and trucks used by the states for the improvement of highways.

WILLIS CAR IN UNIQUE TEST Auto Goes 20 Miles in High With Man Walking at Side. With the assistance of a trained athlete as a pace maker, J. M. White of Sioux City, Ia., recently gave a Wills Sainte Claire touring car a test that had a number of unique features, according to a description received here by C. C. Pagan, local distributor. Mr. White's purpose was to demonstrate the car upon its arrival to Goppe to travel at slow speed while in high gear. The route selected was the road from Sioux City to Merville, a distance of 20 1/2 miles. Before the start the chief of police sealed the transmission of the car, the town constable of Merville examined the car upon its arrival to see that the test was fairly made and a motorcycle officer acted as pilot. The athlete who assisted in the test, Gus A. Carlson, walked the entire 20 1/2 miles beside the car, never getting ahead of it. The front fender or behind the rear fender. His average speed was slightly better than three miles an hour, much of the distance being covered at a rate between two and two and one-half miles per hour. The return trip was made in 25 minutes. Moving pictures were made of this test.

WILLIS CAR IN UNIQUE TEST Auto Goes 20 Miles in High With Man Walking at Side. With the assistance of a trained athlete as a pace maker, J. M. White of Sioux City, Ia., recently gave a Wills Sainte Claire touring car a test that had a number of unique features, according to a description received here by C. C. Pagan, local distributor. Mr. White's purpose was to demonstrate the car upon its arrival to Goppe to travel at slow speed while in high gear. The route selected was the road from Sioux City to Merville, a distance of 20 1/2 miles. Before the start the chief of police sealed the transmission of the car, the town constable of Merville examined the car upon its arrival to see that the test was fairly made and a motorcycle officer acted as pilot. The athlete who assisted in the test, Gus A. Carlson, walked the entire 20 1/2 miles beside the car, never getting ahead of it. The front fender or behind the rear fender. His average speed was slightly better than three miles an hour, much of the distance being covered at a rate between two and two and one-half miles per hour. The return trip was made in 25 minutes. Moving pictures were made of this test.

WILLIS CAR IN UNIQUE TEST Auto Goes 20 Miles in High With Man Walking at Side. With the assistance of a trained athlete as a pace maker, J. M. White of Sioux City, Ia., recently gave a Wills Sainte Claire touring car a test that had a number of unique features, according to a description received here by C. C. Pagan, local distributor. Mr. White's purpose was to demonstrate the car upon its arrival to Goppe to travel at slow speed while in high gear. The route selected was the road from Sioux City to Merville, a distance of 20 1/2 miles. Before the start the chief of police sealed the transmission of the car, the town constable of Merville examined the car upon its arrival to see that the test was fairly made and a motorcycle officer acted as pilot. The athlete who assisted in the test, Gus A. Carlson, walked the entire 20 1/2 miles beside the car, never getting ahead of it. The front fender or behind the rear fender. His average speed was slightly better than three miles an hour, much of the distance being covered at a rate between two and two and one-half miles per hour. The return trip was made in 25 minutes. Moving pictures were made of this test.

WILLIS CAR IN UNIQUE TEST Auto Goes 20 Miles in High With Man Walking at Side. With the assistance of a trained athlete as a pace maker, J. M. White of Sioux City, Ia., recently gave a Wills Sainte Claire touring car a test that had a number of unique features, according to a description received here by C. C. Pagan, local distributor. Mr. White's purpose was to demonstrate the car upon its arrival to Goppe to travel at slow speed while in high gear. The route selected was the road from Sioux City to Merville, a distance of 20 1/2 miles. Before the start the chief of police sealed the transmission of the car, the town constable of Merville examined the car upon its arrival to see that the test was fairly made and a motorcycle officer acted as pilot. The athlete who assisted in the test, Gus A. Carlson, walked the entire 20 1/2 miles beside the car, never getting ahead of it. The front fender or behind the rear fender. His average speed was slightly better than three miles an hour, much of the distance being covered at a rate between two and two and one-half miles per hour. The return trip was made in 25 minutes. Moving pictures were made of this test.

WILLIS CAR IN UNIQUE TEST Auto Goes 20 Miles in High With Man Walking at Side. With the assistance of a trained athlete as a pace maker, J. M. White of Sioux City, Ia., recently gave a Wills Sainte Claire touring car a test that had a number of unique features, according to a description received here by C. C. Pagan, local distributor. Mr. White's purpose was to demonstrate the car upon its arrival to Goppe to travel at slow speed while in high gear. The route selected was the road from Sioux City to Merville, a distance of 20 1/2 miles. Before the start the chief of police sealed the transmission of the car, the town constable of Merville examined the car upon its arrival to see that the test was fairly made and a motorcycle officer acted as pilot. The athlete who assisted in the test, Gus A. Carlson, walked the entire 20 1/2 miles beside the car, never getting ahead of it. The front fender or behind the rear fender. His average speed was slightly better than three miles an hour, much of the distance being covered at a rate between two and two and one-half miles per hour. The return trip was made in 25 minutes. Moving pictures were made of this test.

WILLIS CAR IN UNIQUE TEST Auto Goes 20 Miles in High With Man Walking at Side. With the assistance of a trained athlete as a pace maker, J. M. White of Sioux City, Ia., recently gave a Wills Sainte Claire touring car a test that had a number of unique features, according to a description received here by C. C. Pagan, local distributor. Mr. White's purpose was to demonstrate the car upon its arrival to Goppe to travel at slow speed while in high gear. The route selected was the road from Sioux City to Merville, a distance of 20 1/2 miles. Before the start the chief of police sealed the transmission of the car, the town constable of Merville examined the car upon its arrival to see that the test was fairly made and a motorcycle officer acted as pilot. The athlete who assisted in the test, Gus A. Carlson, walked the entire 20 1/2 miles beside the car, never getting ahead of it. The front fender or behind the rear fender. His average speed was slightly better than three miles an hour, much of the distance being covered at a rate between two and two and one-half miles per hour. The return trip was made in 25 minutes. Moving pictures were made of this test.

WILLIS CAR IN UNIQUE TEST Auto Goes 20 Miles in High With Man Walking at Side. With the assistance of a trained athlete as a pace maker, J. M. White of Sioux City, Ia., recently gave a Wills Sainte Claire touring car a test that had a number of unique features, according to a description received here by C. C. Pagan, local distributor. Mr. White's purpose was to demonstrate the car upon its arrival to Goppe to travel at slow speed while in high gear. The route selected was the road from Sioux City to Merville, a distance of 20 1/2 miles. Before the start the chief of police sealed the transmission of the car, the town constable of Merville examined the car upon its arrival to see that the test was fairly made and a motorcycle officer acted as pilot. The athlete who assisted in the test, Gus A. Carlson, walked the entire 20 1/2 miles beside the car, never getting ahead of it. The front fender or behind the rear fender. His average speed was slightly better than three miles an hour, much of the distance being covered at a rate between two and two and one-half miles per hour. The return trip was made in 25 minutes. Moving pictures were made of this test.

Nash Leads the World in Motor Car Value NASH

Nash Again Reduces Prices

Effective August 1, 1922

At the time of the last Nash price reduction C. W. Nash frankly declared his policy of keeping faith with buyers by passing on the savings earned through increased business.

The response on the part of purchasers was immediate and nation-wide. Sales rose to new records monthly and at this writing we are running 100% beyond last year's business.

So again we announce new and lower prices on every model in the Nash line, and this proves, as nothing else could prove, the truthfulness of the statement that "Nash Leads the World in Motor Car Value."

Table with 4 columns: Model, Sixes, Fours, Price. Includes Five-Passenger Touring, Seven-Passenger Touring, Seven-Passenger Sedan, Coupe, Roadster, Sport Model.

NASH PORTLAND MOTOR CAR CO. Tenth at Burnside—Broadway 0521

AUTO EXPORTS IMPROVE

FOREIGN DEMAND FOR CARS SHOWS BIG INCREASE.

Reports to General Motors Put Trade Upon More Substantial Basis in Many Countries.

NEW YORK, July 12.—Steady improvement in the foreign demand for motor cars is reported by J. D. Mooney of New York city, general manager of General Motors Export company. In commenting on the notable gain in buying power among the countries of western Europe, Mr. Mooney said it undoubtedly reflected a change for the better in the morale of the people.

"We find the self-reliant and resourceful nationalities returning to a more wholesome outlook and constantly improving their economic condition," said Mr. Mooney. "The results lead me to believe that as a rule economic conditions adjust themselves to the temper and purpose of the people as a whole. In my opinion, it was largely the state of public morale which stopped the

Guard Your Power Plant

No matter how fine the power plant in your car or truck may be, road shocks quickly destroy its efficiency. Grüss Air Springs effectively guard your engine from destructive jolts and jars. Write for "Comfort, Economy and Safety" folder.

BURNES AUTO WORKS 12th and Everett Streets Portland Grüss Air Springs Make All Roads Boulevards

Michigan conferring with plant managers of the Cadillac, Buick, Oldsmobile, Oakland, Chevrolet and General Motors truck. He will depart in two weeks to make a personal survey of the trade conditions in South America. Endurance, economy, comfort and price are the four most popular features of a passenger automobile.

Dependable Champions For Every Engine Everywhere Tested in 400 Engines Guard Your Power Plant