

EARL CAR LATEST PORTLAND ARRIVAL

Distribution of New Line Taken by A. C. Stevens.

McCALLUM JOINS FIRM

Well-Known Local Automobile Man Will Direct Retail Sales for Organization.

The Earl car was added last week to the list of automobiles represented in the Portland territory...

The Earl car is a brand-new creation and is a considerably larger car than the old Briscoe...

Following the war he was again in the public eye when, as general manager of the White Motor company, he directed the company's interests during a strike...

The new car is of handsome design, refined throughout. The wheelbase is 112 inches, the motor is four-cylinder cast in block with head removable and valves in side...

ROMAN MOTORS TOO SPEEDY

Ten-Miles-Per-Hour Limit and Speed Regulators Urged.

ROME, Aug. 12.—Confronted with the difficulty of controlling speeding automobiles within the city limits, Rome is considering a device...

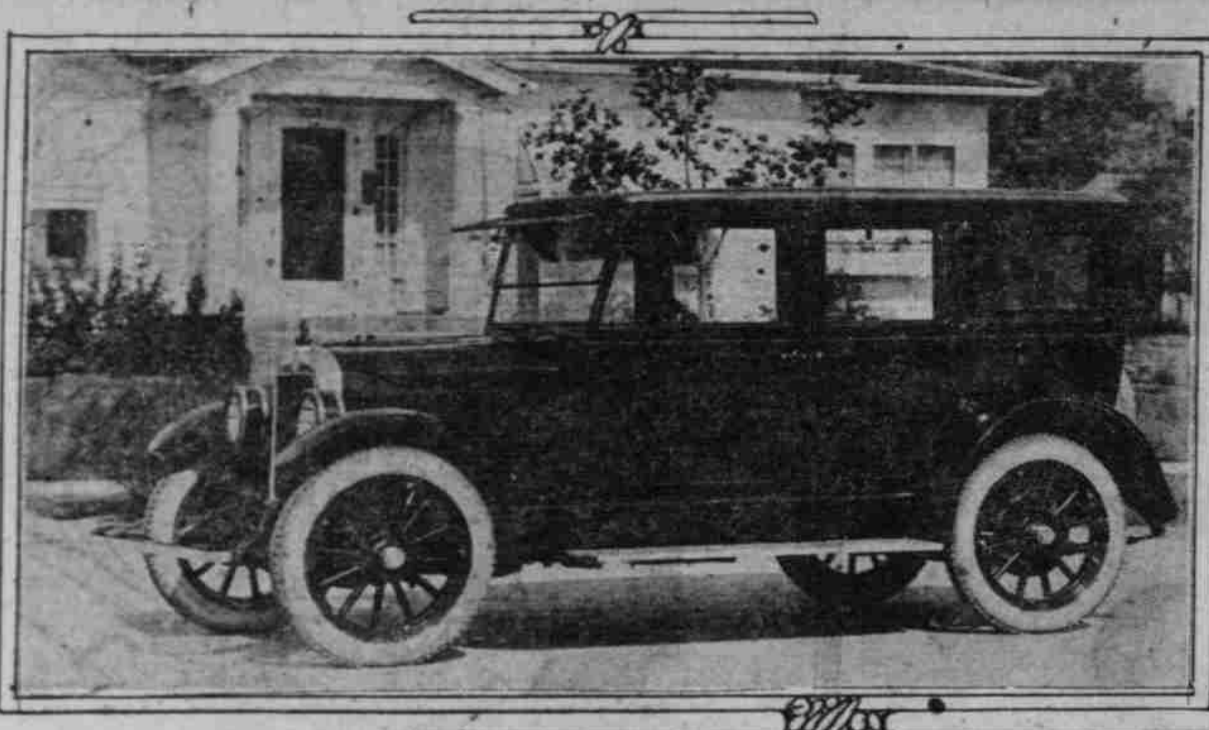
LAW ENFORCEMENT IS HARD

Conditions Change Too Rapidly in Auto Field, Says Official.

OLYMPIA, Wash., Aug. 12.—Many conditions existing in the state of Washington render the enforcement of traffic laws extremely difficult...

Convicts Make Auto Plates. The motor vehicle license plates for 1922 which are being manufactured at the state penitentiary will be more durable than any others...

INTRODUCING THE NEW EARL CAR, WHICH HAS JUST INVADDED PORTLAND.



FRANCE HAS NEW FUEL

ENFORCED USE OF MIXTURE PLANNED.

"Carburant National" Developed After Extensive Experiments. Tests Prove Value.

WASHINGTON, D. C., Aug. 12.—Consul Wesley Frost at Marseille...

reports to the department of commerce that the French government is contemplating the enforced use of a motor fuel of a new mixture composed of alcohol, gasoline, cyclohexanol and phenol...

Various interests have been attempting to find an assured market for the alcohol distilled from sugar beets, surplus wines and vegetable products...

The difficulties have hitherto been somewhat higher than the price of gasoline so that the resulting mixture would be somewhat more expensive than gasoline.

The movement appears to be politically very strong, and there is said to be a possibility that legislation will be enacted which will result in the replacing of gasoline throughout France by a mixture containing 30 per cent gasoline and 70 per cent alcohol.

ROAD CHARTING STARTED

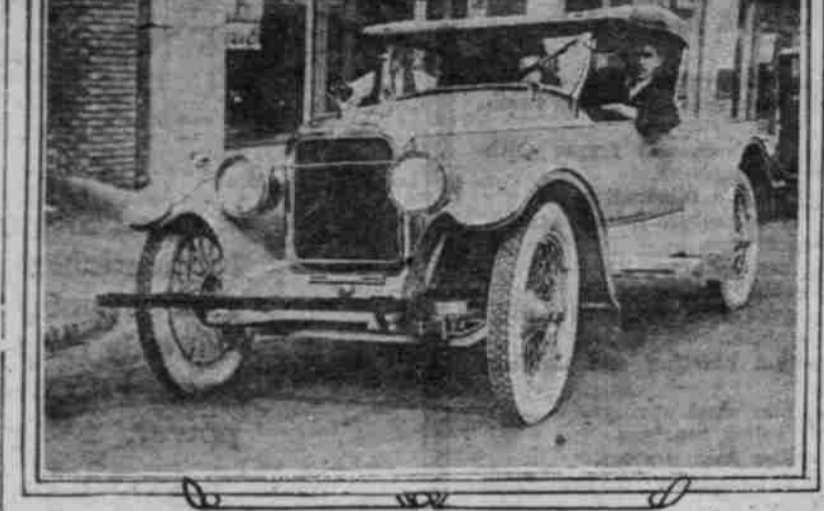
Southern California Motor Association Busy With Task.

LOS ANGELES, Cal., Aug. 12.—One of the biggest annual tasks of the Automobile club of Southern California has just started—the re-charting of the transcontinental highways leading to the southern part of the state.

LOCAL PHYSICIAN MAKES FAST RUN FROM LOS ANGELES WITH PAIGE "6-66"



DR. S. M. GELLERT AND HANDSOME CAR IN WHICH HE RECENTLY MADE TOUR OF SOUTHERN CALIFORNIA.



Above are shown two of the popular new Earl models—the sedan at the top and the sport roadster below.

DROP-IN SALES MANY

MANY MOTORISTS DECIDE ON NEW CARS SUDDENLY.

Condition Said to Indicate More Business Confidence and Improvement Generally.

DETROIT, Mich., Aug. 12.—In an analysis of the existing automobile market R. H. Collins, president and general manager of the Peerless Motor Car company of Cleveland, O., today pointed out as its most interesting characteristic the fact that it is what he terms a "quick-buying market."

From the Exhaust.

THERE are 165 automobile factories in operation in this country.

There are 20,000 motor buses now in operation in the United States.

A Milwaukee power concern has 15 motor buses feeding its car lines.

Never turn off the ignition on a hill or the car will drag the engine.

Don't blame the tires if you skid after jamming the throttle too soon.

Extra tires not in use on the car should be stored in a cool, dark, dry place.

A motor bus with a glass incised top proved a curiosity in New York recently.

The average life of an automobile in the United States is estimated at five years.

Make sure the jack is secure and in working order before attempting to take off a wheel.

Paris policemen are now provided with motorcycles that can carry four other officers of the law in the side car.

The average number of people to each automobile in California is 3.16. In Alabama it is 2.85.

It is said that the only Chinese automobile race driver is Jim Chye, a resident of Canton, China.

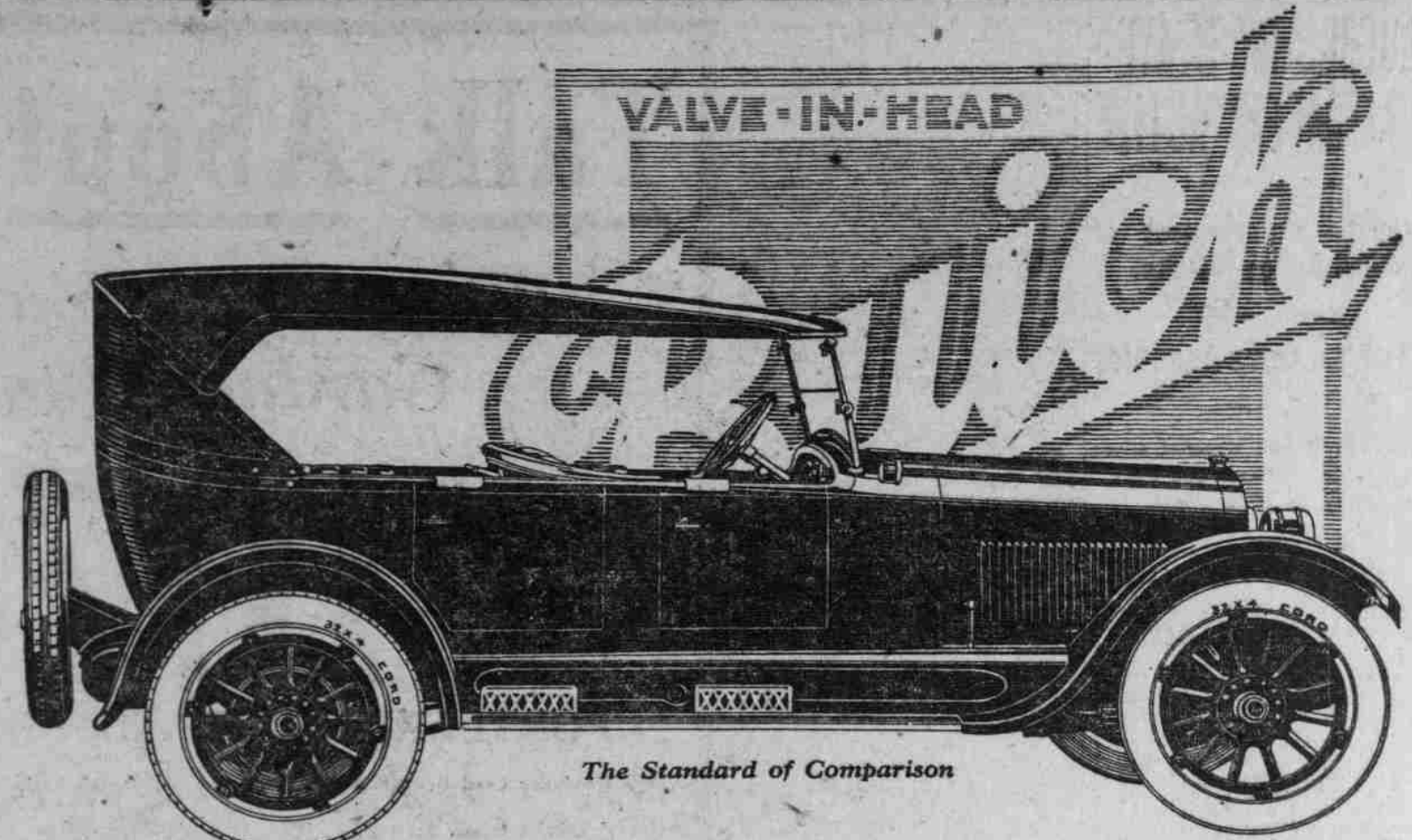
The Union of South Africa imported 24,885 motor vehicles during the years 1917-1921 inclusive.

Watch for black smoke. Your car's burning oil. You've too much oil aboard or too rich a mixture.

The automobile industry is now third on the list. First comes packing and then the steel industry.

New cars should be driven rather slowly for the first 1000 miles. Never more than 30 miles per hour.

The production of automobiles in 1921 required 1,649,000 tons of steel. Six million gallons of varnish and paint were required.



The Finest Model "45" Buick Ever Built

It is a beautiful car—it is luxurious—it is a mechanical masterpiece. Stand off and note the snappy lines, the higher hood, the full crown fenders, sturdy artillery wheels, drum type head and cowl lamps, the low khaki-tinted top. Then sit in the car. Here is comfort equaled only in the costliest automobiles.

Look about you—the upholstery and trimming are of the finest quality, the instrument board is equipped with richly finished instruments, the control lever is at finger's end, the cowl ventilator control and windshield wiper are within easy reach.

And the chassis shows far-reaching improvements. Test the new rear cantilever springs—you will be amazed at the difference in riding comfort. Lock the handy transmission control and know that this feature, with others, gives Buick a low rating by insurance underwriters.

Table with Buick Line for 1923, Pacific Coast Price, and a large price tag of \$1425 including war tax.

Howard Automobile Company

LARGEST DISTRIBUTORS OF AUTOMOBILES IN THE WORLD TWELFTH AND ALDER STREETS BROADWAY 1130

When better automobiles are built, Buick will build them

WHITE STREAK ON TOUR

FAMOUS MITCHELL CAR WILL TAKE PART IN CARAVAN.

Auto From Eastern Factory Bears Slogan, "Portland, 1925"

Painted on Side.

One of the features of the 1925 exposition caravan, which left Portland yesterday on an extended tour of the state, was the Mitchell "White Streak."

While the "White Streak" is a stock model Mitchell in every respect it is unique in that it is painted entirely white and carries on its side in huge letters—"Portland 1925."

The car is driven by J. H. Maden, territory representative of the Mitchell people, and Mr. Maden will make it a point to give the 1925 fair as much "boosting" as possible by showing off the performance of the new Mitchell chassis equipped with the F-50 motor.

The "White Streak" Mitchell operating in other sections of the country have some very remarkable records for speed, hill climbing and stunt performances, and an effort will be made in the northwestern territory, according to Mitchell, Lewis & Staver company, to outperform the Mitchell White Streaks of other sections.

People Like U. S. Autos Best, but Exchange Rate Is Too Low.

No great number of American cars have been sold in Poland since the pre-war period, says Assistant Trade Commissioner Allport, Warsaw, in a report to the automotive division of the department of commerce, because of the high prices asked for them.

While the "White Streak" is a stock model Mitchell in every respect it is unique in that it is painted entirely white and carries on its side in huge letters—"Portland 1925."

The car is driven by J. H. Maden, territory representative of the Mitchell people, and Mr. Maden will make it a point to give the 1925 fair as much "boosting" as possible by showing off the performance of the new Mitchell chassis equipped with the F-50 motor.

The "White Streak" Mitchell operating in other sections of the country have some very remarkable records for speed, hill climbing and stunt performances, and an effort will be made in the northwestern territory, according to Mitchell, Lewis & Staver company, to outperform the Mitchell White Streaks of other sections.

People Like U. S. Autos Best, but Exchange Rate Is Too Low.

No great number of American cars have been sold in Poland since the pre-war period, says Assistant Trade Commissioner Allport, Warsaw, in a report to the automotive division of the department of commerce, because of the high prices asked for them.

While the "White Streak" is a stock model Mitchell in every respect it is unique in that it is painted entirely white and carries on its side in huge letters—"Portland 1925."

The car is driven by J. H. Maden, territory representative of the Mitchell people, and Mr. Maden will make it a point to give the 1925 fair as much "boosting" as possible by showing off the performance of the new Mitchell chassis equipped with the F-50 motor.

The "White Streak" Mitchell operating in other sections of the country have some very remarkable records for speed, hill climbing and stunt performances, and an effort will be made in the northwestern territory, according to Mitchell, Lewis & Staver company, to outperform the Mitchell White Streaks of other sections.

People Like U. S. Autos Best, but Exchange Rate Is Too Low.

No great number of American cars have been sold in Poland since the pre-war period, says Assistant Trade Commissioner Allport, Warsaw, in a report to the automotive division of the department of commerce, because of the high prices asked for them.

While the "White Streak" is a stock model Mitchell in every respect it is unique in that it is painted entirely white and carries on its side in huge letters—"Portland 1925."

NEW LOWER PRICES

Now you can buy a genuine Seiberling Cord with the tread that cannot separate at prices charged for ordinary tires.

32x4 \$28.40

SEIBERLING CORD TIRES

30x3 1/2 \$12.50

Peerless Tire & Rubber Co.

13th at Stark and Burnside

FOR SALE—Established storage battery station handling White Star battery located in city on highway. Fine opportunity for an auto electrical man; also tire shop; none now in this community. Very reasonable terms. Phone Residence, East 6058.

of the Polish mark. Second-hand American cars are being offered by relief organizations at low prices, but the cars are in such poor condition after hard service that they present little or no competition to the existing low exchange value new cars.

NOW IS THE TIME TO BUY VACUUM CUP TIRES

The Safety Non-Skid Feature Costs You Nothing

The quality of Vacuum Cup tires is recommended long after the price is forgotten.

A. J. WINTERS CO., Agents

65-67 Sixth St., Portland, Oregon

Phone Broadway 3992, Broadway 0391

INTERNATIONAL MOTOR TRUCKS

DIRECT FACTORY SALES AND SERVICE

INTERNATIONAL HARVESTER CO.

CORNER BELMONT AND EAST WATER STREETS.

ALLEN & HEBARD CO

64-66 Broadway

distributors for Thermoid CROULIDE COMPOUND TIRES

Auto Accessories, Equipment and Parts

Across From the Artisans' Building and One Door North

DALL-PISTONS

Exact factory duplicate but lighter and more refined.

"Better Pistons are Not Made"

Largest stock of FINISHED Pistons in the northwest.

Pins—Rings—Bushings

Motor Equipment Co.

72 Broadway at Oak

Portland Oregon

Phone Broadway 3327