

SOUTHERN PACIFIC IS BELIEVED DUVER

Secrecy Concerning Realty Deals Not Yet Lifted.

TRACTS BOUGHT IN LINE

Opinion Is Expressed That Plan Is to Construct New Railroad Into Portland.

Repeated refusals of Southern Pacific railroad officials here to discuss any phase of the recent real estate transactions made by Claude Starr, Portland realty broker, or to deny their connection with the deals have led many real estate and railroad men here to believe that the Southern Pacific is really behind the deals, after all.

Property Bought in Line.

The deals have been closed on property lying in an almost straight line across the addition, some of them with the real estate company which holds the tract, others with individual owners.

Half Million Involved.

Although it is impossible to determine the exact investment, due to the widely scattered holdings, a conservative estimate of the deals already made indicates that more than half a million dollars has been involved.

CITY BUDGET UNDER WAY

Work on budget estimates for 1922 has been started by several departments and bureaus of the city government, and City Auditor Funk, by whose office the estimates must be checked and put into final form, has urged all possible speed on the part of those responsible for preparations.

DRAMATISTS TO RETURN

Exponents of Little Theater to Give Another Course. Maurice Browne and Ellen Van Volkenburg, exponents of the Little Theater movement, known in Portland as the result of a course in dramatic work which they gave last winter at the University of Oregon extension department, have returned to Portland.

Veterans to Go to Des Moines.

Oregon will contribute probably as many as 75 delegates from the 1922 national encampment of the Grand Army of Des Moines, August 24 to 28. C. A. R. headquarters at this city expect about 75,000 old soldiers with their families and a large attendance also from organizations such as the Sons of Veterans, the Sons of Veterans Auxiliary, Daughters of Veterans, and the U. S. A. R. and the Women's Relief Corps.

Alleged Moonshiner Arrested.

"I come from pioneer stock—you hadn't ought to arrest me," A. P. Northrup told Deputy Sheriff Beecher, Schirmer and Lamont yesterday afternoon as the trio entered his home at 499 East Twelfth street and interrupted the bubbling of a 25-gallon still. The man, who is about 50 years old, was taken to the county jail in lieu of bail.

STRIKING VIEW OF HERMAN CREEK FIRE AT ITS HEIGHT.

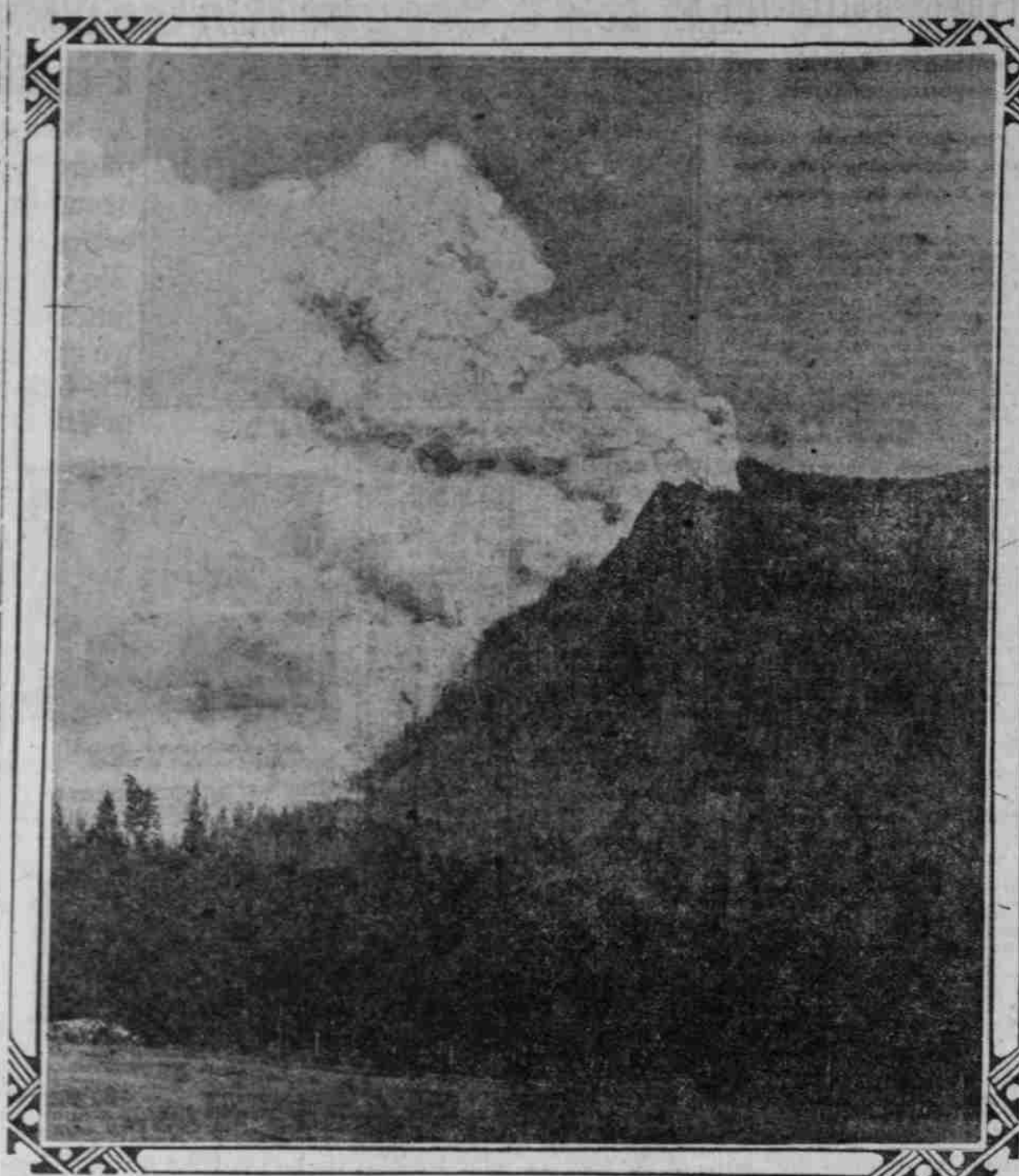


PHOTO TAKEN FROM THE COLUMBIA HIGHWAY AS THE FIRE, THROWING UP TREMENDOUS VOLUMES OF SMOKE, CLIMBED TO THE BENSON PLATEAU.

FOREST FIRE STUBBORN

HERMAN CREEK BURN WEST OF SEASON IN OREGON.

Carelessness of Settler Causes Destructive Conflagration on Columbia Highway.

Due to the carelessness of a settler in burning off brush along the Columbia River highway, near the town of Wyeth, and his delay in reporting the fire after it had burned beyond his control, was started the most stubborn and troublesome fire that has been fought by the United States forest service men in Oregon this season.

WILD ANIMALS BURNED OUT

Scores of Deer, Bear and Other Forest Rovers Flee Flames.

HOOD RIVER, Or., Aug. 5.—(Special.)—The Herman creek forest fire, which burned over hundreds of acres of the Columbia river brakes, the widest region in this section of the Cascades, has driven out scores of deer, bear and other wild animals, according to Gilbert Edgington and Herman Preege, who for the last two weeks, have been engaged continuously as packers for crews fighting the fire.

ESTATE SEEKS DAMAGES

Death of Woman Basis of Suit Begun by Administratrix.

DAMAGES OF \$7500 for the death of Sarah Tallman in a fall down the stairs of a rooming house in Albina, where she was employed as a servant, are sought in a suit filed against the owner, Sadie Ferguson, in the circuit court yesterday.

ROAD TO LINK OCEANS

Trunk Highway of Honduras Will Be Finished in Three Months.

TEGUCIGALPA, Honduras, Aug. 5.—The new motor highway from Tegucigalpa to Comayagua, 108 miles; then to Siguatepeque, 40 miles; then to Lake Yola, 42 miles; then to Potrerillos, 50 miles.

ROAD RAILROAD UNFAIR, STRIKERS CHARGE

Disorders at Albina Plant Are Denied.

PETITION FILED IN COURT

Continuance of Hearing of 20 Men Cited to Answer Complaint Charges Asked.

Charging bad faith on the part of railroad officials, B. A. Green, attorney representing the various railroad shop crafts now on strike, filed a petition in the federal court yesterday asking for a continuance of the hearings of 20 strikers cited to answer contempt charges in court tomorrow.

Railroad Held Unfair.

"The railroad company is not acting fairly in this matter and is simply taking advantage of the situation in its favor," said Mr. Green.

Force Nearly Normal.

"We have many trained and experienced workmen from out-of-town points now working at our Brooklyn shops," said Mr. King.

AUTHOR SELLS STORY

Ether Harris Disposes of Work to Magazine.

"The Vulnerable Point" is the name of a second story written by Ether Harris for the August issue of the "Medical Pickwick" magazine.

Fruit Growers Organize.

WHITE SALMON, Wash., Aug. 5.—(Special.)—The Star Fruit company has been formed by a number of fruit growers of the White Salmon valley for the purpose of handling and shipping their own fruit.

ROAD TO LINK OCEANS

Trunk Highway of Honduras Will Be Finished in Three Months.

TEGUCIGALPA, Honduras, Aug. 5.—The new motor highway from Tegucigalpa to Comayagua, 108 miles; then to Siguatepeque, 40 miles; then to Lake Yola, 42 miles; then to Potrerillos, 50 miles.

ROAD TO LINK OCEANS

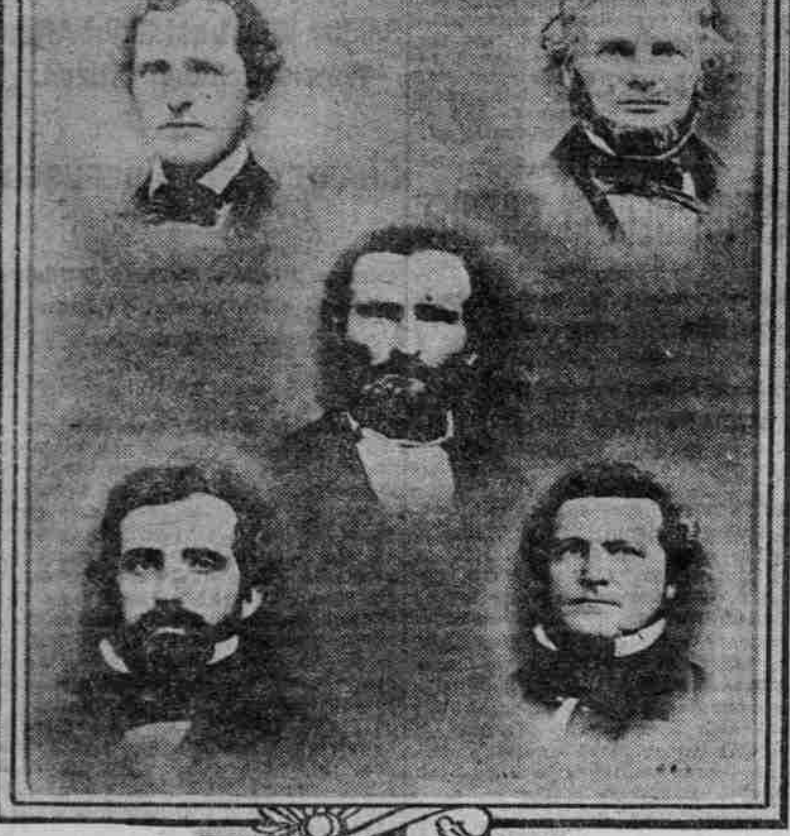
Work is also in progress on another highway to unite San Pedro Sula, important city on the Atlantic coast, with the territory bordering on the Salvador frontier, a distance of about 300 miles.

DO YOU REMEMBER? COLUMBIA BRIDGE AT BIGGS PROPOSED

Sam Hill Suggests New Span Across River.

TOLL SYSTEM OPPOSED

Site Declared Natural One for Structure Connecting Oregon and Washington Highways.



Museum Is Promised.

Should there be such a structure spanning the Columbia river, Mr. Hill said that he would make his concrete castle on the Washington shore a museum.

Road Plan Outlined.

This road begins at the Columbia at Biggs, goes through Spanish Hollow and strikes through Sherman county and enters the Clatsop county.

Synod Will Assemble

NORTHWEST EPISCOPALIANS GATHER IN PORTLAND.

Regional Policy to Be Outlined for Presentation to Great General Convention.

Announcement was made yesterday by Bishop Walker Taylor Sumner of another meeting of northwest Episcopalians to be held the day prior to the opening of the general convention.

Freight Saving Claimed

Local Tire Concern Has Advantage Over Eastern Makers.

The fact that rubber for the manufacture of automobile tires can be shipped from Singapore, one of the principal sources of supply, to Portland at a ton cheaper than to New York city, developed last week when the Columbia Tire corporation, a local concern, announced that it will begin the manufacture of automobiles tires in the near future.

'RUINED' TREES PRODUCE

Peach Orchard Thought Wrecked by Ice Making Good.

Six thousand crates of peaches in the yard of an orchard reported ruined by the great ice storm which visited Portland and vicinity November 19, 1921.

BAY OCEAN FOLK ACTIVE

Community Gatherings Include Dancing and Card Parties.

BAY OCEAN, Or., Aug. 5.—(Special.)—Many enjoyable and home-like gatherings are being held at Bay Ocean this season.

TWO DISTILLERS FINED

Judge Bell Assesses Tax of \$250 on Each Defendant.

Two fines of \$250 each were levied against bootleggers by District Judge Bell yesterday afternoon.

ROAD TO LINK OCEANS

Trunk Highway of Honduras Will Be Finished in Three Months.

Work is also in progress on another highway to unite San Pedro Sula, important city on the Atlantic coast, with the territory bordering on the Salvador frontier, a distance of about 300 miles.

Museum Is Promised.

Should there be such a structure spanning the Columbia river, Mr. Hill said that he would make his concrete castle on the Washington shore a museum.

Road Plan Outlined.

This road begins at the Columbia at Biggs, goes through Spanish Hollow and strikes through Sherman county and enters the Clatsop county.

Synod Will Assemble

NORTHWEST EPISCOPALIANS GATHER IN PORTLAND.

Regional Policy to Be Outlined for Presentation to Great General Convention.

Announcement was made yesterday by Bishop Walker Taylor Sumner of another meeting of northwest Episcopalians to be held the day prior to the opening of the general convention.

Freight Saving Claimed

Local Tire Concern Has Advantage Over Eastern Makers.

The fact that rubber for the manufacture of automobile tires can be shipped from Singapore, one of the principal sources of supply, to Portland at a ton cheaper than to New York city, developed last week when the Columbia Tire corporation, a local concern, announced that it will begin the manufacture of automobiles tires in the near future.

'RUINED' TREES PRODUCE

Peach Orchard Thought Wrecked by Ice Making Good.

Six thousand crates of peaches in the yard of an orchard reported ruined by the great ice storm which visited Portland and vicinity November 19, 1921.

BAY OCEAN FOLK ACTIVE

Community Gatherings Include Dancing and Card Parties.

BAY OCEAN, Or., Aug. 5.—(Special.)—Many enjoyable and home-like gatherings are being held at Bay Ocean this season.

TWO DISTILLERS FINED

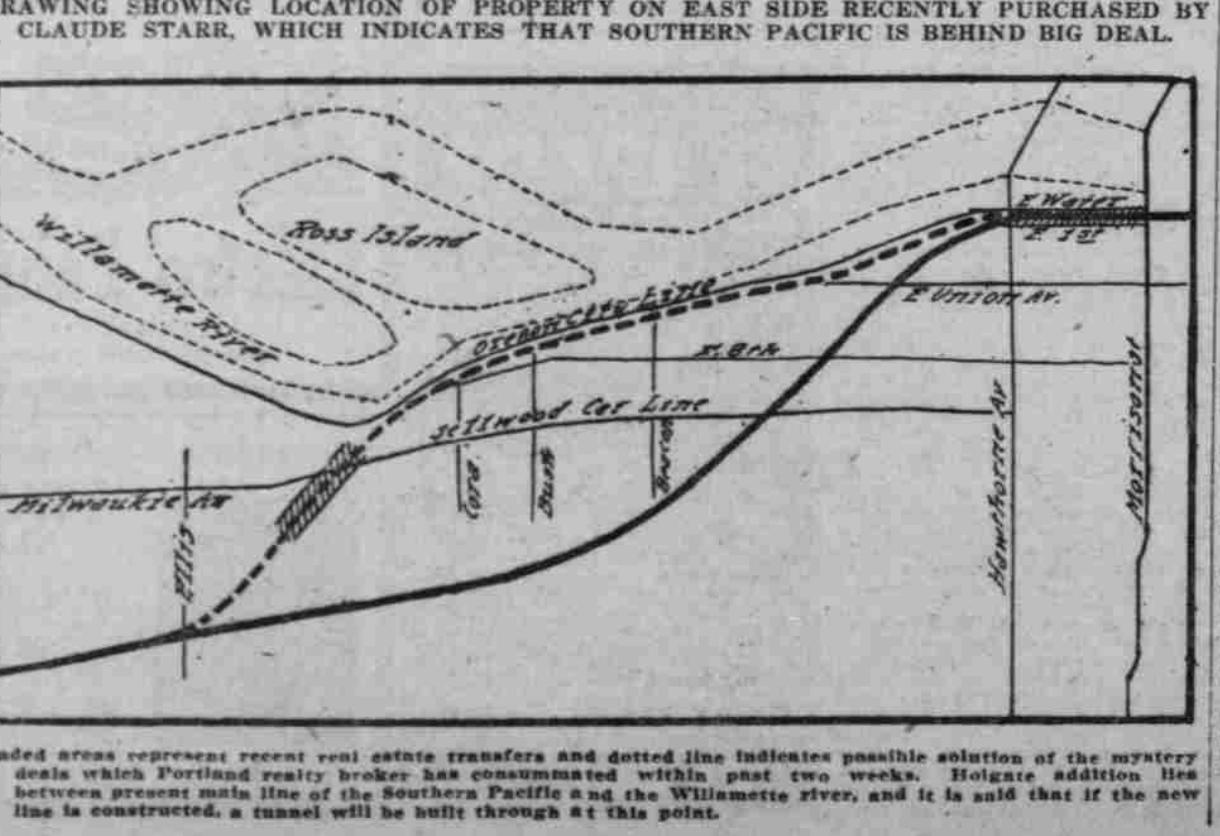
Judge Bell Assesses Tax of \$250 on Each Defendant.

Two fines of \$250 each were levied against bootleggers by District Judge Bell yesterday afternoon.

ROAD TO LINK OCEANS

Trunk Highway of Honduras Will Be Finished in Three Months.

Work is also in progress on another highway to unite San Pedro Sula, important city on the Atlantic coast, with the territory bordering on the Salvador frontier, a distance of about 300 miles.



DRAWING SHOWING LOCATION OF PROPERTY ON EAST SIDE RECENTLY PURCHASED BY CLAUDE STARR, WHICH INDICATES THAT SOUTHERN PACIFIC IS BEHIND BIG DEAL.