

### 3 RADIO CONCERTS LISTED FOR WEEK

The Oregonian Offers Fine Programme of Music.

### TEN ARTISTS ENGAGED

Hotel Portland Orchestra Added to Attractions for Pleasure of Large Audiences.

### ORCHESTRA AND TEN ARTISTS TO APPEAR THIS WEEK

Monday night, 7:30 to 8:30—Winifred Campbell, soprano; Sylvia Weinstein, violinist; and Morris All, baritone. Wednesday night, 8 to 10—Genevieve Clancy, soprano; Dorothy Lewis, mezzo-contralto; Bernice Mathison, violinist; and Harriet Baughman, cornetist. Friday night, 8 to 10—Herman Kenin's Hotel Portland orchestra and vocal solos.

Ten artists, besides Herman Kenin's orchestra, all of acknowledged talent, nine of whom have acquitted themselves notably in previous radio entertainments are listed in the schedule of concerts to be broadcast from the Oregonian radio tower during the present week. They are segregated into three concerts, one tomorrow night and two Wednesday night.

The concert to be given tomorrow night, between 7:30 and 8:30 o'clock, includes Winifred Campbell, soprano; Sylvia Weinstein, violinist; and Morris All, baritone. All of these musicians have taken part in the Oregonian entertainments. Miss Campbell was introduced by Miss Letta Fraker Stites, her teacher, and Morris All took part in the programme given by pupils of Mrs. Fred L. Olson. Miss Weinstein made her radio debut in the same concert, which was given on June 19, shortly after she returned from New York city, where she was an instructor in the Damrosch school.

Entertainers Are Distributed. No two artists of the same talent are included in the two concerts to be broadcast Wednesday night, between 8 and 10 o'clock. During the first hour will be heard Genevieve Clancy, soprano soloist for St. Mary's cathedral; M. de la Parolle, a new baritone to Portland; Miss Margaret Laughton, a well-known and able flutist; and Miss Harriet Baughman, who played a number of correct solos in splendid fashion last night.

Steps have been taken by J. R. Weed, operator of the Oregonian set, and local manager of the Shipowners' radio service, to stop or at least abate the interference of spark stations.

Complaints were received Friday night and yesterday from hundreds of listeners that their entertainment had been grossly disturbed by the interference and in order to prevent a recurrence of the trouble, Mr. Weed has referred the matter to the district radio inspector, together with the names of the interfering operators.

### ENGINEER TO BE HIRED

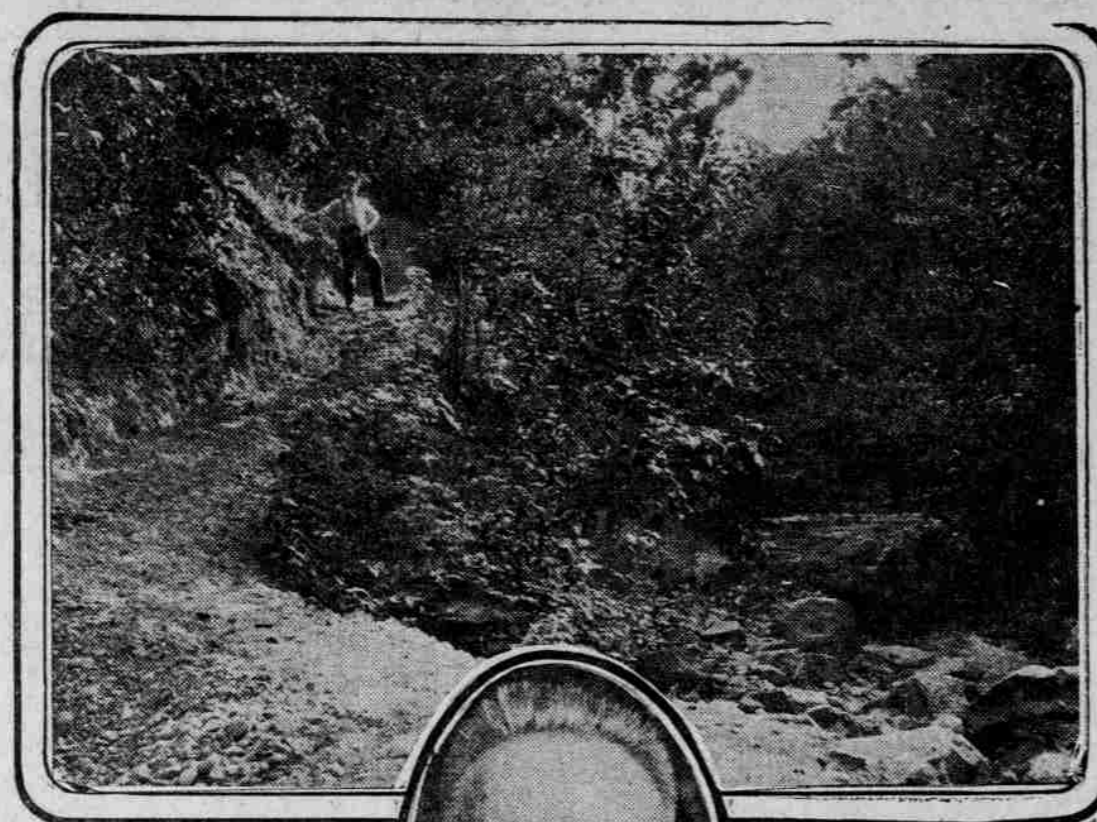
Selection of an engineer to make a survey of the new Parkrose water district and prepare an estimate of the total expenditure necessary in the installation of the project will be made at an official meeting of the new commissioners tomorrow night. Several bids were submitted at the regular meeting of the body Friday night, but the matter was held over pending further investigation and consideration by the committee.

With the selection of an engineer accomplished the work will be pushed rapidly and it is hoped to arrange the bond election for the early fall. Milton R. Klepper has been appointed attorney for the district. Open meetings will be held at intervals to the taxpayers of the district an opportunity to lay before the commission any plans which they may have for the new water system.

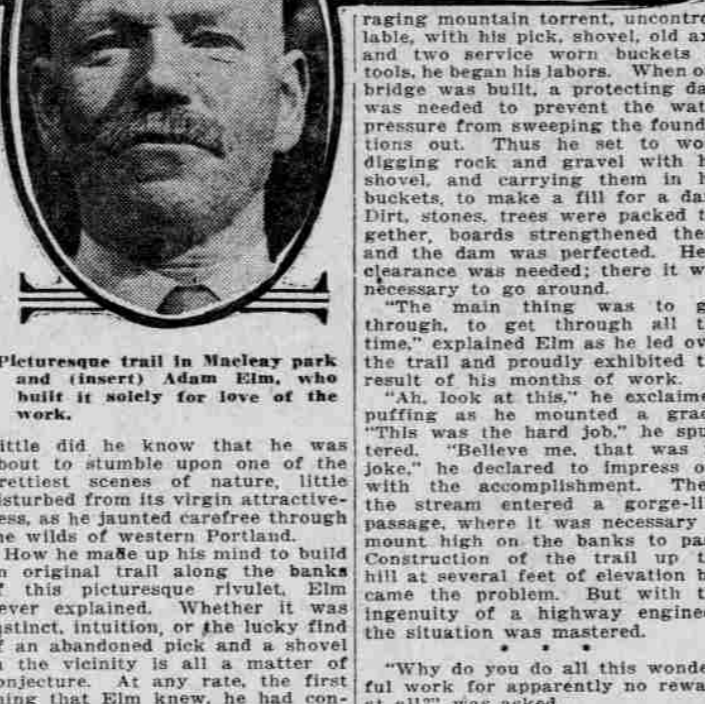
Milwaukee Club to Meet. The Milwaukee Community club will hold a regular meeting next Wednesday night, July 26. An urgent request for a 100 per cent attendance has been made. The club has been considering several important boosting plans for the community and the surrounding districts and has taken in a number of new members.

### HUMBLE DISHWASHER IN LOCAL CAFETERIA BUILDS WONDERFUL TRAIL AT ODD TIMES

Adam Elm, Seeking Health, Finds Best Restorative in Keeping Near Nature and Turns His Hand to Construction of Enchanting Approach to Beautiful Macleay Park.



It took many men many months to engineer and construct many miles of wonderful highway along the Columbia river, how long does it take one public-spirited citizen, working alone, and for the mere pleasure of it, to engineer and construct one-half mile of a two-foot trail along a mountain stream, wild, secluded and unfrequented?



Picturesque trail in Macleay park and (insert) Adam Elm, who built it solely for love of the work.

Adam Elm, a native-born German with an English name, resident of this beautiful land for 17 years, now employed as a dishwasher in the Coffee Cup cafeteria, found himself in poor health from the time he entered the portals at Ellis island. No occupation and no climate which he tried in his wanderings from place to place satisfactorily eradicated his ailment. Doctors continued to inform him that he needed a change of climate. Finally, as a last resort, he determined upon California, but when he landed in this city on his way south he became attracted by its possibilities, he breathed fresher air, and was persuaded to give it a try as a healthful climate.

Elm found himself a place of residence, secured himself occupation, and then sought for a pastime. What was most alluring than the beauties of nature in the immediate vicinity, easily accessible by foot, and undeviated by the inroads of humanity?

Elm, fond of nature and of visiting her in her isolated seclusion, betook himself to the western hills, and there, in the solitude of a rivulet which wended its way toward the Willamette river through the greenwood of Balch's canyon.

Alone he worked. During the winter months, when the rivulet was a mere trickle, he dug out a path through the brush, and in the summer months, when the rivulet was in flood, he built a bridge across it.

Elm, a native-born German with an English name, resident of this beautiful land for 17 years, now employed as a dishwasher in the Coffee Cup cafeteria, found himself in poor health from the time he entered the portals at Ellis island.

Elm, fond of nature and of visiting her in her isolated seclusion, betook himself to the western hills, and there, in the solitude of a rivulet which wended its way toward the Willamette river through the greenwood of Balch's canyon.

Elm, a native-born German with an English name, resident of this beautiful land for 17 years, now employed as a dishwasher in the Coffee Cup cafeteria, found himself in poor health from the time he entered the portals at Ellis island.

Elm, a native-born German with an English name, resident of this beautiful land for 17 years, now employed as a dishwasher in the Coffee Cup cafeteria, found himself in poor health from the time he entered the portals at Ellis island.

Elm, a native-born German with an English name, resident of this beautiful land for 17 years, now employed as a dishwasher in the Coffee Cup cafeteria, found himself in poor health from the time he entered the portals at Ellis island.

Elm, a native-born German with an English name, resident of this beautiful land for 17 years, now employed as a dishwasher in the Coffee Cup cafeteria, found himself in poor health from the time he entered the portals at Ellis island.

### CITY SINKING FUND TO BE CONSIDERED

Eastern Syndicate Offers 10-Year Period Plan.

### PROPOSAL NOW PENDING

Minneapolis Company Will Take Care of Bonded Indebtedness Under Fiscal Arrangement.

A plan to create a sinking fund with which outstanding bond obligations of the city of Portland may be retired, has been presented to Commissioner Pier, in charge of the finance department, and will be considered at a conference to be held at the city hall Monday.

The Investors' Syndicate of Minneapolis, a corporation established in 1884, has presented the plan which representatives of the company declare, if adopted, and applied to the entire bonded debt, not considered at a conference to be held at the city hall Monday.

Company Presents Its Plan. The company proposes to enter into an arrangement with the city whereby a stipulated sum of money, based upon the amount of bonds involved in the initial deal, will be paid to the syndicate by the city for a period of 10 years.

Water Bonds Are Example. Importance of the plan is emphasized by the fact that at the present time the water bureau is handicapped through failure to sell its bonds as the result of an inadequate sinking fund.

Syndicate Operating Here. The syndicate has been operating in Oregon for the past year, for the most part investing money that has been brought from eastern states.

Drug Violator Gets Limit. Maximum sentence was imposed on Fred Allen, charged with being a narcotic vendor, by Judge Ekwall in municipal court.

New Invention. Your feet get tired first, walk on these muscles, the inventor claims.

Paper's Staff Picnics. Swimming and Dancing Party at Windemuth Is Enjoyed.

Guard Accused of Theft. J. Rhuler, employed as a guard at the Southern Pacific railroad shops, was arrested by Deputy Constable Watkins yesterday afternoon.

Driver Is Arrested. Daniel Grant, 275 Williams avenue, was arrested on a charge of reckless driving yesterday afternoon.

Chinese Rounded Up. As a result of a tip furnished by an unidentified expressman, six Chinese, accused of being in this country illegally, were rounded up Friday by immigration officers and

# GEVURTZ

FURNITURE CO. 185 First Street, Near Yamhill

## PORTLAND AGENTS BUCK'S STOVES, RANGES AND COMBINATION RANGES

Places a Buck's Range in Your Home. We Give You a Year to Pay the Balance. We Charge No Interest.

**Special Sale on Overstuffed Furniture**

Read This Carefully. Overstuffed Davenport and Chairs, Upholstered in fine Blue or Taupe Velour or Tapestry, Loose-Spring Cushions and very desirable in every way. Comfort personified.

**Davenports \$69.50**

Chair or Rocker **\$39.75** \$1.00 Cash \$5.00 Cash  
\$1.00 Week \$1.50 Week

**Dining Table and 4 Fine Chairs**

Upholstered in Genuine Blue or Brown Leather, the Set **\$54.75**

The dining table has solid mahogany top and the chairs are solid mahogany. The finish is a little off color, otherwise here is a \$125.00 set, and note the easy terms—

\$5.00 Cash \$1.00 a Week

**Beautiful Overstuffed Rocker, Upholstered in Best Imitation Leather. \$16.75**

Bed, Spring and Mattress Complete **\$19.75**

Fine one-inch continuous post Beds in ivory or bronze. 40-lb. felted mattress and guaranteed spring.

\$1.00 Cash \$1.00 Week

**Duofold Davenport Upholstered in fine Spanish leatherette, special this week \$47.50**

Choice of 12 Fine Buffets **\$24.75**

12 fine Oak Buffets in wax, fumed or golden finish. Some are priced as high as \$45.00. First come, first served, so hurry here Monday morning.

\$4.75 Cash; \$1.00 Week

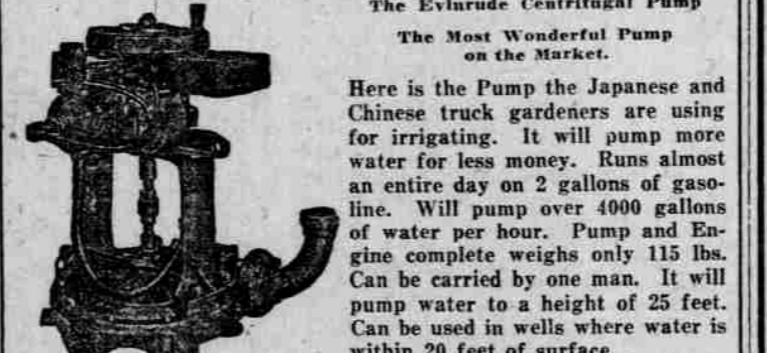
\$1 Cash \$1 Week

# GEVURTZ

FURNITURE CO. 185 First Street, Near Yamhill

Easy Terms at Cash Prices

### The Evinrude's Little Brother



The Evinrude Centrifugal Pump. The Most Wonderful Pump on the Market. Here is the Pump the Japanese and Chinese truck gardeners are using for irrigating. It will pump more water for less money. Runs almost an entire day on 2 gallons of gasoline.

### "The WAYFARER"

At Seattle July 24-29

1 1/2 FARE Round Trip Via UNION PACIFIC

Tickets on Sale July 23, 24, 26, 27 and 28 Only. Final Return Limit July 31.

Special Display of Canoes and Boats equipped with engines. Come in and see them. Motorboat Supplies, Gasoline Engines, Electrical Supplies and Fishing Tackle. Open Saturday evenings until 9 o'clock.

211 Morrison Street Portland, Oregon