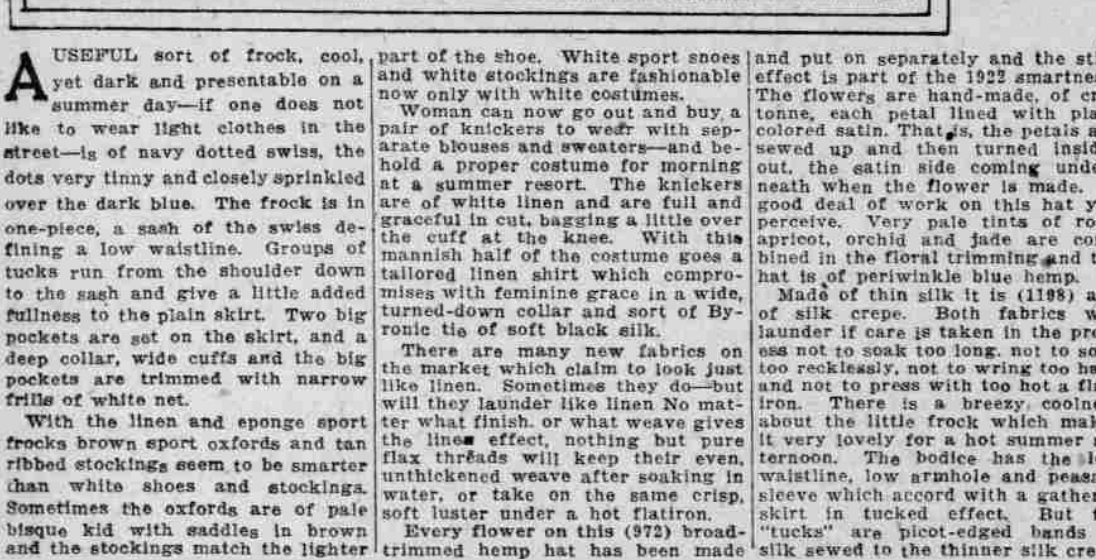


Women Can Now Go Out and Get Pair of Knickers to Wear With Separate Blouse or Sweater at Summer Resorts—Nothing Launderers Like Linen.

---



Dear Madam Richet: I have nearly ming with something else instead of

**R**OSALIE: I wish I had the width of your material as I could so much better give the specific style I would like to "see" you have, but I shall suggest the type and perhaps you can follow accordingly.

For the dress for the older person I would like to see her in the graceful gown pictured in the July Delineator, page 24, No. 3546. The sash and the facings are what I have in mind. I like the buckles to be a pretty novelty in the steel beads. This is a really charming model and is effective when made up.

Thank you for the appreciation expressed in your letter.

Dear Madam Richet: Again I thank you for your letter. I have had splendid success from previous suggestions in remodeling. My 16-year-old daughter has a dress made up in the style of the dress with round neck, sleeves and joining of the long waist to gather skirt bound in blue silk like sample. She has medium size eyes, dark hair, blue eyes and creamy skin, with no color about eyebrows and lashes black. Would not a bright blue be good for her? Good touch? How would embroidery in white

**PORTLAND, Or.—Dear Madams** Richest. Will you please help me plan to make over dresses for my 18-year-old daughter? The pink taffeta is made up, actually like inclosed illustration. Would like to make it over for a little evening dress for informal college affairs. Please suggest a pretty way, to remake it and material to combine with it, if possible. The other is a badly worn Goats navy taffeta, the sleeves being almost gone, while the rest of the dress is fairly good. Would like to make it last a little longer, if possible; would greatly appreciate suggestions for a way to make it over also for college wear next fall. Lastly, please suggest a way to remake it for myself, of which I inclose sample. It is made like sketch, but is an short, and short-waisted with large hips and it does not look well on me. Should I have used satin instead of the navy blue, the wigwag style, and what kind of girdle would look best for one of my size and shape? Weigh 130 pounds, 5 feet 10 inches, my waist and hips are so large I just cannot look nice in anything. I am asking a lot of favors, but your kind help will mean so much to me. Thank you for it all. Please answer in Sunday's paper. Yours truly,

The summer quarterly for the Butterick issue shows a charming frock for the college girl. See page 25, 2358. In the event you have the paneled skirt you will then have sufficient material to have the side cascade as shown and which is exceedingly graceful. Have the rose trim a combination of the darker pink than your taffeta and a French blue. The velvet ribbon girdle should be in the deeper rose to match the shade of flower used. Should you not fancy the sleeveless type shown a cap sleeve can be made with the flower above it.

For one having the large hip I would suggest the type as shown in the June Designer, page 68, No. 7563. The well fitted and set-in sleeve with this model will give you a splendid type and style, which is far better for you than the one enclosed. The panel can have a different treatment. For instance, the top being a tucked front of batiste or the georgette in the same shade as your material. The cross belt of flowers made of your taffeta. The long line from the shoulder and over the hip will please you and prove conclusively that you can "look well" in the right frock.

and put on separately and the stiffness is part of the fun of wearing it. The flowers are hand-made, of cretonne, each petal lined with plain colored satin. That is, the petals are made of cretonne, and the lining, of satin side coming underneath when the flower is made. A good great deal of fun on this has been achieved. Very pale pink, rose, apricot, orchid and jade are combined in the floral trimming and the hand-made flowers.

Made of this silk it is (1198) and of silk crepe. Both fabrics will launder if care is taken in the procedure. Do not wash, do not press too recklessly, not to wring too hard and not to press with too hot a flat-iron. The crepe-edged fabric is about the little frock which makes it very lovely for a hot summer afternoon. The lining has the lovely, not up-suck the crepe, not so stiff sleeve which accord with a gathered skirt in tucked effect. But the crepe is a blood-edged fabric, and the silk sewed to the thinner silk crepe.

daughter's dress we be in the combination of which you write! Geranium works particularly well with poncee shade and if black is used rather generously, the club binding will not obtrude itself in the general scheme of trimming. A pleasing design will be found in the But-

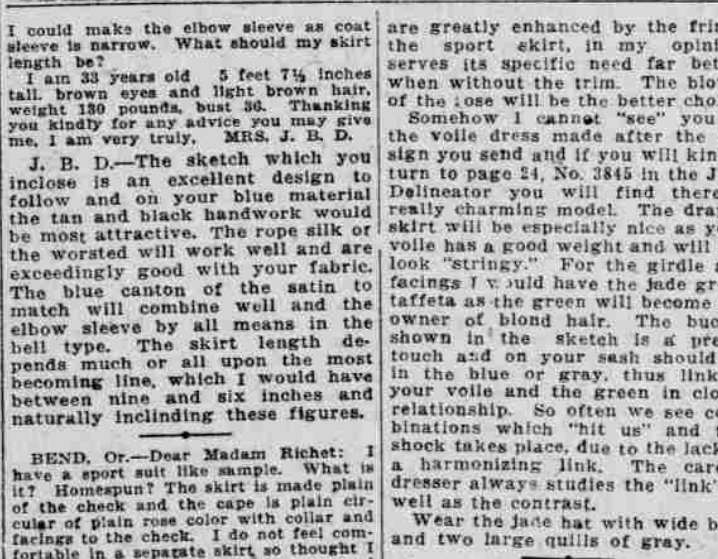
Dear Madam Richet: I am coming, again to you concerning a dress nearly like inclosed picture. I'm also inclosing former questions to your Instructive Magazine. I wish to carry off Havelock I the right pattern all cut out and basted up but the sleeves look much too large and the skirt is a trifle full.

eliminating the extra fullness. The extra fullness was not enjoying the popularity it had been a few seasons ago, but can be made wearable by making the bodice sleeveless and wearing the batiste blouse and the crepe net over it, either in the white or the black, which is a new idea for a son. For the cap and scarf to wear with it I would have the white and black.

1. *Journal of the American Medical Association*, 1997; 278: 1039-1044.

Gray Frame Is Enameled in Soft, Bright Colors in Lotus-Flower Pattern—Fine Silver Thread Used in Design.

\_\_\_\_\_



The piece of voile I want for a simple afternoon dress I had in mind some-thing like enclosed sketch. Or would you suggest something different? I have three and one-half yards. How should I finish the neck, sleeves? How should I skirt? With hemstitching, silk of cotton or with binding of blue satin? Then what should the girle be? I am 28

## No More Gray Hair or Dandruff!

That's what thousands of men and women are telling their friends. The false appearance of age which gray hair gives and which dandruff so seriously affects the scalp is easily removed.

Improvement, some of the light freckles vanishing entirely.

Be sure to ask the druggist the double strength Othine; it is this that is sold on the money-back guarantee.

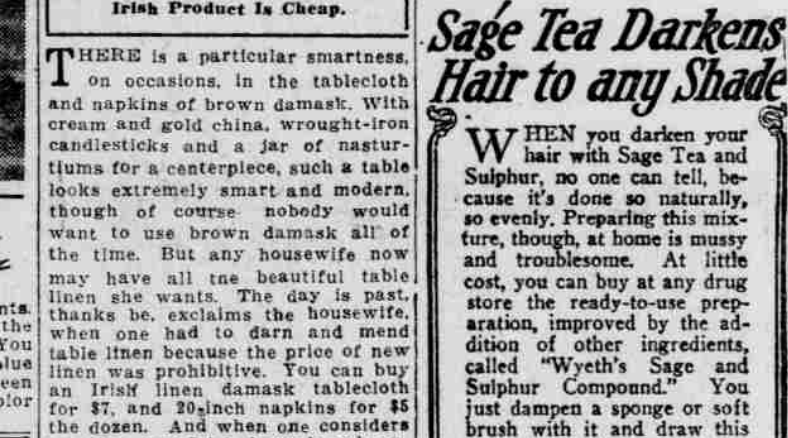
**Embarrassing Hairs Can Be Quickly Removed**

\_\_\_\_\_

**Makes One-Half More From Same Amount of Fruit—Saves  
All Color and Flavor—Never Fails**

As a spread on hot biscuits, toast, time jam is taken off fire let stand

With Certo you use the fully-rinsed raspberries; only one minute of boiling is required for the half hour or more the old way calls for. The result is a far more fruitful jam, one that is made from the same amount of fruit, because no juice has boiled away. And you get the taste of the fresh berries. So when you find a wild berry patch down by the woods now stored up for you for winter use, make the Certo Recipe for Raspberry Jam.



**Be Fat?**

The answer of most fat people is that constant dieting is hard, continual exercise is tiresome, exhaustive—then, too, it might be harmful to force the weight down. That's the old-fashioned idea. Today in *Marionella* Prescription Tablets all these difficulties are gone. Just a pleasant, harmless little

**DEFY GRAY HAIR**

No matter what your age, gray hair claims you old. If at 30 or 40 your hair has grayed, "Browmate" will be your greatest boon. "Browmate" is woman's best friend in preserving the "look of youth." It has restored girlish charm thousands have lost.

**DON'T SQUEEZE BLACK-HEADS—DISSOLVE THEM**

Squeezing and pinching out blackheads make the pores large and cause irritation.