

MOTORISTS PRAISE OREGON HIGHWAYS

Tourists State Roads Now Surpass California's.

WEEKLY BULLETIN OUT

Report by State Highway Department Tells Condition of Main Thoroughfares.

SALEM, Or., June 21.—Oregon highways are this season in a much better condition than those of California, according to tourists who are touring the western coast.

The weekly report of the state highway department, relative to the condition of the state roads, was issued here today. It follows:

Pacific Highway. Portland-Oregon City—Willamette river bridge at Oregon City closed for construction.

Drain-Roseburg—Highway open and paved macadamized to Willamette river from highway just south of Willamette river.

West Side Highway. Portland-West Dayton—Paved. Traffic for McMinnville and points beyond will find an all-paved route via Dayton and Three-Mile lane.

West Dayton-Lafayette—Graveled and in good condition. St. Joseph-McMinnville—Paved.

McMinnville-Whiteoak—Closed for paving. Traffic for Whiteoak and points south take South Bend road leaving McMinnville via Grant street, rejoining highway at Whiteoak or Amity.

Whiteoak-Amity—New highway closed. Take old road, gravelled and in fair condition. Amity-Holmes Gap—Paved except 1/4 mile near Holmes Gap, which is gravelled.

Holmes Gap-Rickreall—Gravelled and mostly fair condition. Rickreall-Monmouth—Independence—Paved.

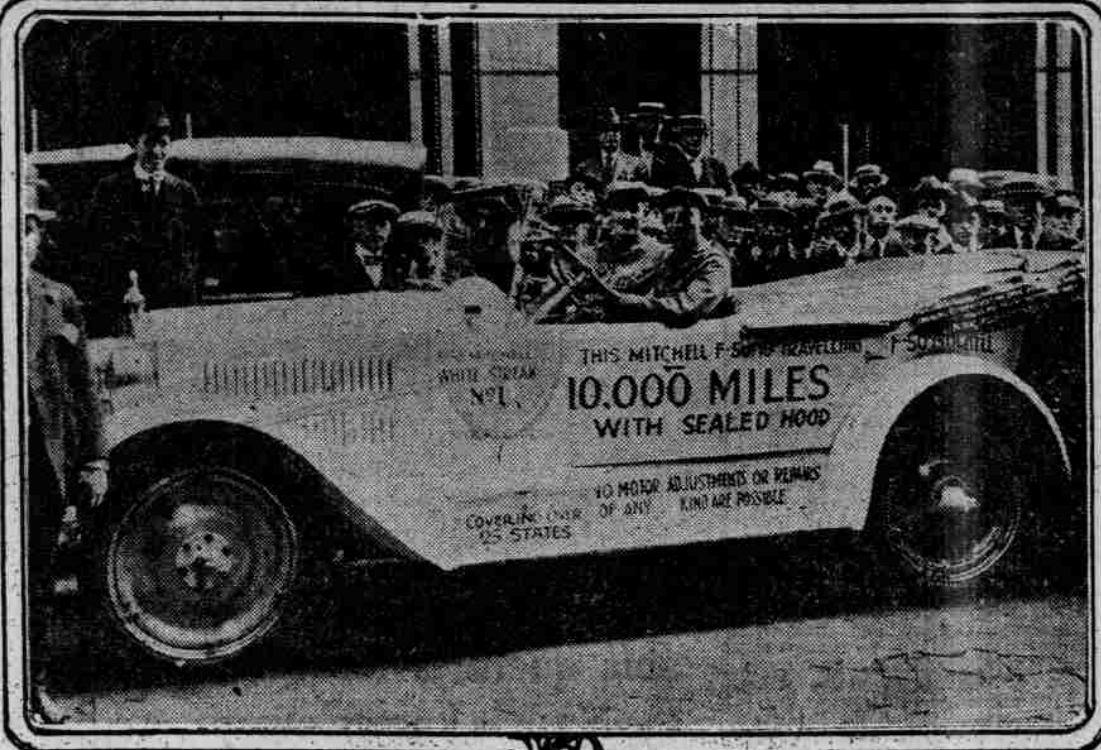
Independence-Corvallis—Take road via Silver, gravelled to Benton county line; paved county line to Corvallis.

Corvallis-Junction City—Paved. Columbia River Highway. Portland-Astoria—Paved except one mile through Haysden.

Portland-Cascade Locks-Hood River—Paved. Monitor-The Dalles—Paved, except one mile of macadam.

Monitor-The Dalles—Paved, except one mile of macadam. Contractors are paving between Monitor and Rowena so that travel will be completed to adhere to the following schedule in passing over the new pavement.

FIRST MITCHELL "WHITE STREAK" BEGINS LONG DISTANCE RUN.



MITCHELL CAR WITH SEALED HOOD ON ARRIVAL IN NEW YORK FROM CHICAGO.

Ten thousand miles without once lifting the hood—that's the demonstration now being staged by the Mitchell Motors company with its first "White Streak" Mitchell car.

The Mitchell car, known as White Streak No. 1, will visit 129 metropolitan cities in the east and middle west covering its 10,000 miles. Later the Mitchell company plans to send out a White Streak No. 2 to visit Pacific coast cities, according to Mitchell, Lewis & Staver, who received the above photograph, and Portland will be on the itinerary.

but rough in places; being smoothed up as far as possible. The Dalles-Budget—Road rocked and in good condition. Toledo-Newport—Macadamized and in good condition.

Willamette Valley-Florence Highway. Open and passable to Blatchy by both Low Pass and High Pass routes. Low Pass route is rocked to Golden post-tours are necessary. Camas Swale; balance of highway to Denton is paved with the exception of a short section at Cottage Grove.

Drain-Roseburg—Highway open and paved macadamized to Willamette river from highway just south of Willamette river. Garden Valley to Roseburg—Paved.

Portland-Forest Grove-Junction West Side Highway at St. Joseph—Paved except short gaps at Scoggins creek and Tualatin river bridges.

Mt. Hood Loop Highway. Portland-Sandy—Take Powell Valley road which is paved to Gresham; gravelled and in good condition to Cottrell; thence via Bluff road, gravelled, fair condition.

The Dalles-California Highway. Note: See Sherman highway for alternate route to central Oregon. The Dalles-Shaniko (by way of Mauldin and Bakeoven)—In fair condition. Rough and dusty between the Dalles and Shaniko.

Shaniko-Madras—Best route is via Antelope and Gateway. Between Shaniko and Antelope new macadam in good condition. Antelope to Madras in good condition. Trail crossing is a little rough.

Bend-Alton ranch—Under and gravel surface, in good condition. Allen ranch-Port Klamath—Dirt road, in fair condition. New rough spots.

Port Klamath-Lama's mill—Dirt road with light grades and in good condition. Lama's mill-Klamath Falls—Macadamized and in good condition; light cars are making through trips from Bend to Klamath Falls in 6 hours.

Klamath Falls-California state line—All macadamized with exception of 2 1/2 miles near Merrill, and in good condition. Some construction work going on, watch for barricades and red lights.

Oregon-Washington Highway. Pendleton-Washington State Line—Paved and open; drive slow at caution signs where maintenance work is in progress.

Pendleton-Pilot Rock—Five miles good earth road; 10 miles of macadam. Pilot Rock-Vinson—New standard grade, under contract for macadam.

USEFUL AVENUES OFFERED BY BUSES

Short-Haul Traffic Relieved in Big Centers.

SPECIAL SERVICE GIVEN

Engineer Declares Machines May Be Used for Auxiliary Work to Subway Lines.

NEW YORK, June 24.—There are at least four ways in which buses may become a useful part of the transportation scheme in New York city, in the opinion of Daniel L. Turner, consulting engineer of the Transit Commission of New York.

He suggested that buses be used for special route service for segregated groups, cross-town service, accommodation of short-haul traffic in congested areas in place of surface lines and for auxiliary work to the present subway and elevated lines in the development of the outlying areas of the city.

Special Service Furnished. "There are at least four ways," said Mr. Turner, "I believe, in which buses may become a useful element in the transportation scheme of New York. But in every case their use would be as a supplement to the existing services, not as a general substitute for such services."

DETROIT, June 24.—A battery of great hulking machines, which grind with greater accuracy than watchmakers use in their art, has been added to the equipment of the Cadillac Motor Car company.

The machines are the result of 20 years of experimentation in transmission gear grinding. They are regarded as the biggest advance in grinding machinery that has been made in the last 15 years.

IRELAND WILL WANT AUTOS. Establishing of Stable Government Will Bring Demand. DETROIT, June 24.—Ireland will be in the market for 20,000 motor cars within a year, according to Harry B. Huet, one of the big distributors of that country, who is in the United States on a buying trip.

It is planned in London to do away with all railroads, above ground, and the old roadbeds are to be connected into highways or speedways for motor traffic.

Complete Valve Assemblies for Your Car. The best valve assembly combination to be had anywhere is offered by West's Parts, Inc., the West's largest exclusive replacement parts organization.

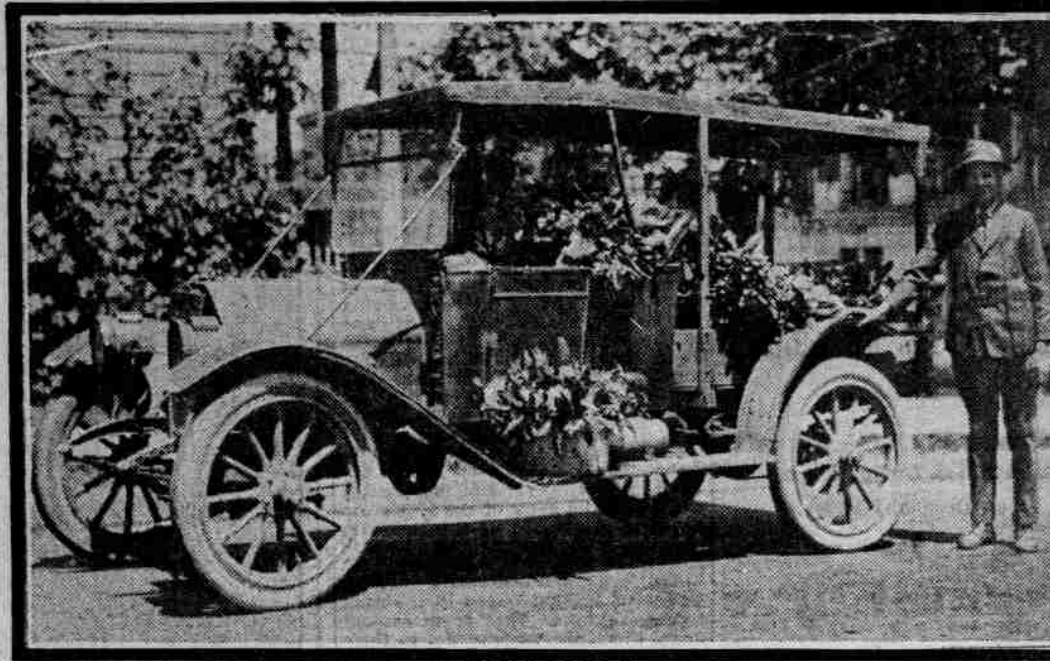
Mackay Chrome Nickel Steel Alloy Valves are typical of the whole combination. Made of special analysis metal, forged by the metal die process, annealed for 11 hours, accurately machined and ground between centers, 100% inspected and rust-proofed, these valves literally "put a new heart in the car."

Similarly, the cages, guides and tappets are the best that can be had anywhere. Instruct your repair man to order valve assemblies for your car from our store. A telephone call will bring what he needs in a hurry.

Parts Catalogue to the Trade. Patterson Parts, Inc., "New Parts for All Cars". 20-22 12th St. N., Portland, Oregon. Telephone Broadway 2751.

Other Stores: San Francisco Oakland Sacramento

OLD 1911 STUDEBAKER IS FIRST CAR THROUGH SNOW AT GOVERNMENT CAMP.



VETERAN OF MANY MILES AND TROUTDALE BOY WHO DROVE CAR.

Although the Mount Hood loop road to Government Camp has been open for a couple of weeks or so, there is one stretch of the road near Government Camp that was only opened the other day, the earlier cars having made a brief detour to get around a snow bank.

Clarence H. Fisher of Troutdale, son of P. J. Fisher, a farmer of that section, claims the distinction of first breaking through this last section of road, and with an old-timer of 1911 to boot.

He suggested that buses be used for special route service for segregated groups, cross-town service, accommodation of short-haul traffic in congested areas in place of surface lines and for auxiliary work to the present subway and elevated lines in the development of the outlying areas of the city.

troiling franchise fights of the surface lines can be furnished better by buses than in any other way. Congestion May Be Relieved. "Thirdly, buses can be used to some extent to accommodate the short-haul traffic in the congested centers in the place of the surface car lines. This would not mean a general elimination of the surface cars and a substitution of buses, but the use of buses in the place of cars only when and where excessive vehicular congestion requires it."

In passing a slower moving vehicle pass it on your left, but in passing a street car always keep to the right.

Advertisement for Cyclo Motor Oil. 'free from destructive "sulpho" compounds in motor oil cause it to break down and thin out rapidly under engine heat.' 'destructive' 'Sulpho' 'Cyclo' 'MOTOR OIL' 'Associated Oil Company' 'Executive Offices Associated Oil Building 79 New Montgomery Street San Francisco'

Advertisement for Benz Spring Co. 'BENZ SPRINGS' 'Complete Valve Assemblies for Your Car' 'The best valve assembly combination to be had anywhere is offered by West's Parts, Inc.' 'BENZ Spring Co.' 'Manufacturers Phone Broadway 3140 9th & Everett St., Portland'