

MILEAGE PIRATES SIGNED FOR RACES

Tacoma Event to Be Greatest in Northwest.

FAMOUS MEN WILL VIE

Captain Eddie Rickenbacker, World War Ace, May Attend July 4 as Official.

Following is a complete list of the field of drivers to participate in the 15th annual national championship race to be held on the Tacoma speedway July 4, together with car to be driven: Jimmy Murphy—Murphy Special; Harry Hartz—Duesenberg Special; Ralph De Palma—Duesenberg Special; Tommy Milton—Leach Special; Cliff Durant—Durant Special; Ralph Mulford—Frontenac Special; Howdy Wilcox—Frontenac Special; Roscoe Series—Duesenberg Special; Joe Thomas—Duesenberg Special; Peter De Paolo—Diestel Duesenberg Special; Bennie Hill—Car not named; Jerry Wunderlich—Duesenberg Special; Leon Duray—Frontenac Special; Art Klein—Frontenac Special; Frank Elliott—Leach Special; Barney Oldfield—Facemaker.

TACOMA, Wash., June 17.—"On to Tacoma" is the battle cry of the speed kings, for the next real big race of the year is to take place on the Tacoma speedway on July 4. There are two other races scheduled before the Tacoma race, but they will not equal the northwest event. On June 14 a small field of drivers will drive at Uniontown and another at San Francisco.

With 15 of the fastest cars and drivers in the world headed for Tacoma, the greatest speed programme ever witnessed in the northwest is scheduled to take place. The Tacoma event closed early last week and the cream of the racing world entered this year.

Mileage Pirates Listed.—The mileage pirates who have signed for their cars are: Jimmy Murphy, driving a Murphy Special; Harry Hartz, Duesenberg Special; Ralph De Palma, Duesenberg Special; Tommy Milton, Leach Special; Cliff Durant, Durant Special; Ralph Mulford, Frontenac Special; Howdy Wilcox, Frontenac Special; Joe Thomas, Duesenberg Special; Peter De Paolo, Diestel Duesenberg Special; Bennie Hill, Car not named; Jerry Wunderlich, Duesenberg Special; Leon Duray, Frontenac Special; Art Klein, Frontenac Special; Frank Elliott, Leach Special.

Of the 15 drivers entered, three have been picked out for first money: Jimmy Murphy, winner of the Memorial-day classic at Indianapolis; Harry Hartz, a close second to Murphy and Tommy Milton, the prime favorite. Murphy is driving the fastest 181-cubic-inch car that ever took to the track. His partner, Bennie Hill, is driving a car that is the sensation of the day. Harry Hartz, a youthful meteor from San Francisco, has made Jimmy keep his feet to the floorboard most of the time. Hartz is driving a duplicate of Murphy's winning Duesenberg of the grand prix in 1921. Milton is making a desperate effort to oust Murphy and Hartz from the top of the race calendar with his fast Leach Special. The car is new. Milton and he has not quite found its tricks yet.

Oldfield to Lead.—Barney Oldfield, "master driver of the world," is to be the main attraction for the event in Tacoma. Oldfield will lead the field to a flying start and then will watch the "youngsters" circle the same speedway which helped to make him famous. Captain Eddie Rickenbacker, ace of aces during the world war; Joe Boyer and Earl Cooper, all veterans of the track, are endeavoring to arrange their schedule so that they will be on hand this Fourth in Tacoma. They will act as officials if they attend the race.

Requests for boxes and seats are flooding the mail of the speedway office. The seat sale has been under way for several weeks and advance indications point to a crowd of 40,000 or 50,000. Branch offices and touring bureaus of the Automobile Club of Western Washington in Tacoma, Seattle, Bellingham, Chehalis, Ellensburg, Everett, Ilwaco, Mount Vernon, Olympia, Raymond, Vancouver, Wenatchee, Yakima, Hoquiam, Bremerton and Port Angeles are acting as official representatives for the speedway and reservations may be made at each one.

STUDEBAKER MAKES RECORD

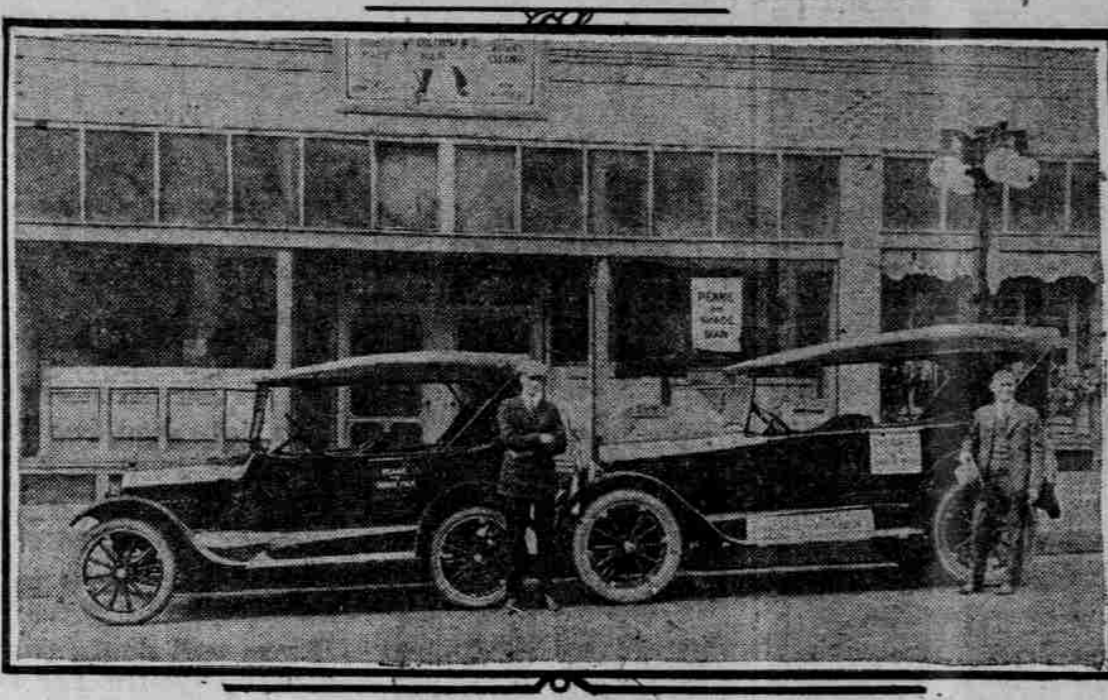
May This Year Greatest Month in History of Big Corporation.

Studebaker production, sales and general financial progress during the month of May shattered all previous records, according to news received from A. R. Erskine, president of the big corporation, by Manager Leander of the Portland branch. Sales for the month, according to Mr. Erskine's statement, were approximately 16,000 cars, production amounted to 16,850 cars and collections came to \$17,000,000. This record shows almost 100 per cent greater activity than May, 1921, despite the fact that 1921 was an excellent year for Studebaker. In May last year sales were 7383 cars. Widespread demand for Studebaker cars continues unabated, according to Erskine, and is exceeding production capacity.

Velle Dealer Named.—Harry S. Velle, a prominent business man of Kelso, Wash., has taken the dealership for the Velle car in that section, according to arrangements concluded last week by Mr. Velle with the W. R. Dely Motor company. Velle distributor for Oregon and a portion of Washington.

Mr. Velle made a visit to Portland to confer with a number of distributors regarding a dealership and after his investigation selected the Velle car. His territory will consist of Cowlitz county, including the towns of Kalama, Kelso and Castle Rock, and he will open headquarters in Kelso.

TWO MORE CHEVROLETS PURCHASED BY PEAKE, "THE SHADE MAN."



New cars delivered last week to local firm by the Fields Motor Car company, Chevrolet distributors. The cars, an "F. B." model touring and a "480" touring, bring the total to eight Chevrolets which Mr. Peake has purchased for his business.

CLOSED CARS INCREASE

HUDSON SAID TO TOP LIST FOR GAIN.

Proportion of All Cars Reaches 25 Per Cent in 1921 and is Still Growing.

DETROIT, June 10.—Automobile manufacturers are agreed that the tremendous increase in proportion of closed cars made since 1916 has been one of the outstanding features of the automotive business during that period. In that year 1.5 per cent of all motor cars made in the United States were closed cars. This proportion has risen rapidly each year since, reaching 25 per cent in 1921, and it is still growing at a phenomenal rate.

The Hudson Motor Car company, which has been a leader in proportion of closed car sales, due to its pioneering in this line, probably tops all manufacturers today. Fifty-five per cent of its entire output since January 1 has been in closed cars, it announces. Essex Motors is believed to be in second place in this respect. Slightly more than half of the Essex output since the year started has been in cars of this type.

Both companies state that the proportion of this business is continuing at approximately the same rate, even with summer at hand. In fact, it is quite certain, they declare, that when production totals for May are compiled it will be found that the closed car business for that month was even higher than the yearly average to date. It is believed that each company's proportion will mount even higher during the remainder of the year, since closed car business is always heavy in the fall. In 1921, 21 per cent of Hudson's entire manufacture and 19 per cent of the Essex output was in closed cars. Decision to build the new coach type and the ability of each concern through volume sales to offer this model at but little more than an open-car price are generally accepted as the reasons for the gain each has made. Orders for these types normally are in undiminished number, it is reported.

MOTORISTS LOSE LICENSES

Over 500 Washington Drivers Forfeit Right to Use Roads.

SPOKANE, June 17.—More than 500 Washington motorists already have lost their licenses this season for failure to obey highway law, according to L. D. McArdle, state director of efficiency, during an inspection trip here. McArdle expects several thousand white driving cards to be taken up by judges and justices during the present season.

WILLS PRODUCTION HEAVY

Eighty Wills Sainte Claire Cars Shipped in One Day.

The last day of May marked a new production record for Wills Sainte Claire cars, according to word received by Charles C. Fagan, local distributor. On that day the Marysville plants of C. H. Wills & Co. shipped 80 cars. The best day's production of the plant.

HEAD OF TIRE ORGANIZATION RESIGNS.

W. L. Bartlett, who is leaving the business here after five active years.

Announcement has been made that W. L. Bartlett, who for the past five years has been president and general manager of the Perfect Tire company, has resigned to take up other lines of business. Mr. Bartlett, who has been in business in Portland for some 27 years, brought the first Perfect tires to this coast and during the past five years has opened a chain of stores from Spokane to San Diego, all of which have shown splendid growth.

INSURANCE LOSSES SEVERE

Steps Must Be Taken to Protect Underwriters, Is Statement.

Automobile thefts all over the country have been so numerous, according to a report by Joseph W. Russell, a member of the New York Underwriters' conference, that in the last 12 months the reported losses have exceeded the premiums by \$10,000,000.

"Many of these claims have been crooked," he writes, "and the underwriters are making efforts to protect themselves by inspecting the physical condition of cars more carefully and scrutinizing the record of owners. I have favored an association of all automobile underwriters in order to have the physical inspection of cars undertaken by one central bureau.

"It is difficult to deal with the moral risk in this way, however. That would mean that each company would report to all other companies anything they found against the character of an applicant. This would amount to a blacklist. We might find ourselves in conflict with the state anti-trust law in proceeding this way.

LIGHT TROUBLES TO END

ADJUSTING STATIONS OPENED FOR SERVICE AT NIGHT.

Certificates of Work Are Issued by Permission of California State Auto Department.

SAN FRANCISCO, Cal., June 17.—One of the greatest problems confronting the motorist driver in California is well on the way to solution. It is the problem of night headlights on the road at night.

Through the efforts of the California Trade association and the California Motor Vehicle department, which Charles Chenu is superintendent, official headlight adjusting stations have been established throughout northern California and others will be appointed in the south just as soon as the two illuminating engineers cover the ground.

NEW LIBERTY MODEL NAMED

The Cavaliers Is Title Selected for Roadster and Touring.

"The Cavaliers" is the name just announced by the Liberty Motor Car company for the two special models recently introduced, which will be known individually as the Cavalier roadster and Cavalier touring.

Four months ago the Liberty company developed a specially touring model. Recently this was followed by a companion car in the roadster type. But they were without any particular designation except "special" touring and "special" roadster, which didn't seem adequate or appropriate. A distinctive name for these particular models was thought necessary and suggestions invited.

"MECO"

Best combination makes the best compression and oil-tightness. Guarantees And We Back It Up!

DALL PISTONS MECO PISTON PINS PEELE'S DIST. RINGS MOHAWK PISTON RINGS BRONZE BUSHINGS CRITCHLEY REMERS

We originated ACCURATE Micrometer Service for our products in the Northwest and only the highest-grade material.

EIGHT LAKES ON ROAD

TWO WATERFALLS TO BE SEEN NEAR SPOKANE.

Devil's Well and Great Cave Are Within Reach of Visitors to District, Mostly New.

SPOKANE, Wash., June 17.—The Portland motorist visiting Spokane will find that this section offers a comfortable 25-mile drive eight lakes, two waterfalls, a "Devil's Well," and a mammoth cave. You can't get into the cave, but then, caves are damp and unhealthy, anyway.

The section containing this scenery is about 80 miles from the city, in practically virgin country. The roads are good, considering the broken nature of the land, and with careful driving no difficulties should be met. To reach the string of lakes, the tourist turns at West Branch, on the Newport highway north of Spokane and follows the West river. Three miles from the main road is Aloha lake. The next is Fan lake, where the Y. M. C. A. boys hold their annual encampment. A few miles further on is Horseshoe lake, which, until this summer, had never seen a white man's boat.

Just a short distance beyond Horseshoe lake is the "Devil's Well," an apparently bottomless pit, circular, carved out of solid basalt. Its origin is a mystery, but it is supposed to be an old volcanic blow hole. For some distance the ground sounds hollow to the tread, indicating a cave of immense proportions, which has been explored and with a visible outlet.

Past the "Devil's Well" the tourist passes Fan Falls and another waterfall, nameless as yet, and arrives at Lost Lake. Above this again is Trout lake and further on is Sackeen lake, last of the main string and outlet of the west branch. It is only about 16 miles from lake No. 1 to lake No. 7, more lakes to a given stretch of road than in any other part of the northwest.

CHARGE CAMP SUCCESSFUL

Eugene Favors Fee System Over Free Camp of Last Year.

EUGENE, Or., June 17.—(Special.)—The Eugene chamber of commerce has recently received letters from chambers in Oregon cities where a charge is made for the use of the automobile tourist camp grounds and in every instance it is stated that the change system is meeting with success.

The Eugene municipal auto camping ground is under a fee system this year for the first time. There has been some criticism on this account, some people being of the belief that not as many tourists stop here as under the free grounds system, but the records of the ground keeper show that more were registered during May this year than during the corresponding month last year when the grounds were free.

LANCASTER CAMP OPENS

RESORT NEAR EAGLE CREEK BEGINS SUMMER SEASON.

Ground Broken for Lost Lake Camp, Which is Expected to Be Ready Early in July.

Lancaster's Columbia Gorge camp at Eagle creek, on the Columbia River highway, opened yesterday, ushering in the summer tourist season in the great Oregon vacation land. A number of prominent men from Portland attended the formal opening as guests of Samuel G. Lancaster, founder of the chain of camps in the northern Cascade range bearing his name.

INSPECTION IS CAREFUL

ASSEMBLY AND TEAM WORK ARE PERFECT.

Detroit Newspaper Men See Modern Inspection System of Cadillac Plant.

DETROIT, Mich., June 17.—Perhaps no department of the average automobile plant in America has undergone such development during the past year as the inspection department. In the face of keen competition the manufacturers have striven to bring out better cars, that will stand up under the most individual use, but perfect as to assembly and "team work."

LANCASTER CAMP OPENS

RESORT NEAR EAGLE CREEK BEGINS SUMMER SEASON.

Ground Broken for Lost Lake Camp, Which is Expected to Be Ready Early in July.

Lancaster's Columbia Gorge camp at Eagle creek, on the Columbia River highway, opened yesterday, ushering in the summer tourist season in the great Oregon vacation land. A number of prominent men from Portland attended the formal opening as guests of Samuel G. Lancaster, founder of the chain of camps in the northern Cascade range bearing his name.

An opportunity to show residents of other sections of the country what Oregon is doing to provide facilities for tourists who wish to enjoy the beauty of the Oregon mountains will be afforded today, when a number of Shriners, returning from the convention at San Francisco, will visit the camp as guests of Mr. Lancaster.

The opening of the camp, according to railroad officials and other tourist-travel authorities, marks an epoch in the development of Oregon as a vacation land. William McMurray, general passenger agent of the Oregon Washington railroad, and Franklin T. Griffith, president of the Portland Railway, Light & Power company, visited the camp a few days ago and became highly enthusiastic over its possibilities.

A score of Reed college students have been at the camp for a week, making final preparations for the opening. A half dozen girls are included in the college contingent. They will have charge of the cuisine of the camp.

The first visit to the camp by the Reed college students was made on their "river day," when they journeyed up the Columbia river by boat and enjoyed the unique experience of freezing ice cream in mid-June snowbank in the camp territory, 100 feet above sea level.

A miniature Lancaster camp will be exhibited in the armory this week at the Chamber of Commerce show in conjunction with the Rose Festival. The radio station, which is to be erected at Lancaster's Columbia gorge camp, will be installed on the balcony of the armory and with its magnavox, will receive the concerts broadcasted by Pacific coast stations.

INSPECTION IS CAREFUL

ASSEMBLY AND TEAM WORK ARE PERFECT.

Detroit Newspaper Men See Modern Inspection System of Cadillac Plant.

DETROIT, Mich., June 17.—Perhaps no department of the average automobile plant in America has undergone such development during the past year as the inspection department. In the face of keen competition the manufacturers have striven to bring out better cars, that will stand up under the most individual use, but perfect as to assembly and "team work."

Newspaper men of Detroit, this week were given a view of what the modern inspection system in automobile manufacturing is when they were taken through the big new Cadillac plant here.

Five hundred inspectors are perpetually at work at the Cadillac plant to see that every Cadillac car leaves the factory in perfect condition. This body of inspectors guarding and guaranteeing Cadillac performance constitutes a small army of workmen.

These 500 inspectors, working under a master inspection department, have at their command and maintain the prescribed standards of accuracy 20,000 precision instruments. It is interesting to note that more than 14,000 of these precision instruments are constantly in use.

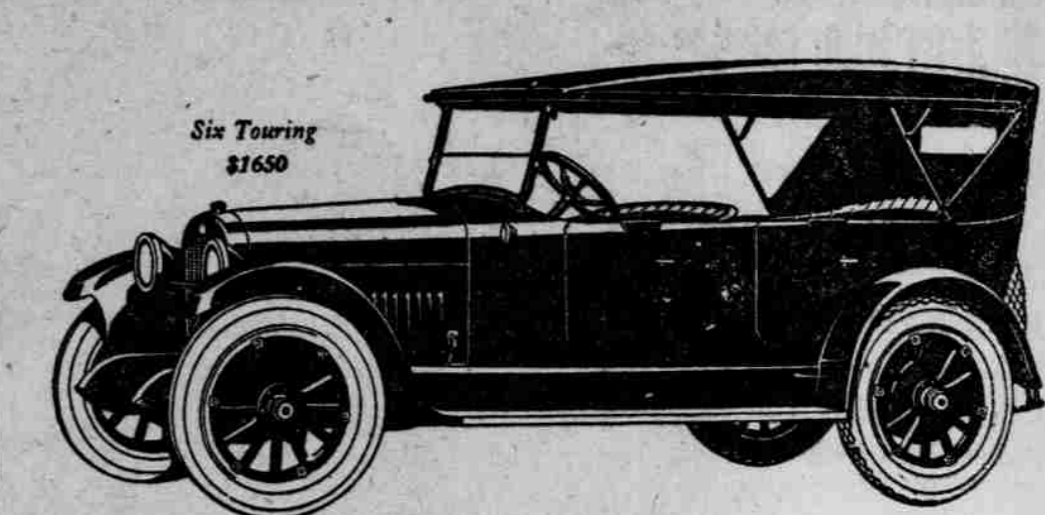
Even the instruments themselves are not immune from inspection. They are constantly tested. The piston gauges are checked twice every day. The Johansson gauges, known as the last word in mechanical measurements, have been used for many years in the Cadillac factory for checking all precision instruments.

Dimensions are all held to fine limits. The fineness of these measurements may be appreciated when it is remembered that the ordinary newspaper is three one-thousandths of an inch in thickness, and that many measurements are only one-tenth of that thickness.

More than 200 gauges and micrometers are used to make certain that the connecting rods and pistons conform to the exact specifications set by the engineers. The machining and finishing of one part of connecting rods and pistons involves 336 operations.

Upward of \$1,500,000 is spent each week in New York city for taxi rides.

Nash Leads the World in Motor Car Value



The certainty of getting unusual riding comfort in the Nash is proving a powerful attraction to buyers in every section of the country. The first quarter of this year ran 51% greater in sales than the same period last year. April set a new passenger car sales record, and the month of May registered a full 23% increase over and above April.

FOURS and SIXES Prices range from \$1175 to \$2725, f. o. b. Portland

NASH Portland Motor Car Co. Tenth at Burnside

Super Refined still reduced-not blended HYVIS dealers give free crankcase service WIGGINS COMPANY, INC. Refinery Distributors PORTLAND OREGON

CORD TIRES At Less Than Wholesale 30x3 Non-Skid Fabric...\$8.75 30x3 1/2 Non-Skid Fabric...\$9.50 New, Fresh Stock Just Received From Akron, Ohio 30x3 1/2 Clincher N.-S. Cord \$12.50 31x4 "SS" Non-Skid Cord \$19.95 32x4 "SS" Non-Skid Cord \$22.45 33x4 "SS" Non-Skid Cord \$23.75 32x4 1/2 "SS" Non-Skid Cord \$29.95 34x4 1/2 "SS" Non-Skid Cord \$30.95 33x5 "SS" Non-Skid Cord \$37.75 34x5 "SS" Non-Skid Cord \$39.95 35x5 "SS" Non-Skid Cord \$40.25 All sizes in stock. AMERICAN Tire & Rubber Co. Broadway and Oak—Phone Bdwy. 2300

INTERNATIONAL MOTOR TRUCKS DIRECT FACTORY SALES AND SERVICE INTERNATIONAL HARVESTER CO. of America, CORNER BELLMONT AND EAST WATER STREETS.