

PROTEST AGAINST PRIMARY GROWS

Even Originators Confess Law Needs "Fixing."

MANY COUNTIES IN LINE

Umatilla Only One So Far to Declare Allegiance to System Now in Use.

A rising tide of protest and complaint against the present primary nominating system is spreading throughout the length and breadth of Oregon. This demand for amendment to the present law in order to cure defects long apparent is not confined to one party, but the advocates are found among republicans and democrats alike.

It is now a foregone conclusion that at the next session of the legislature, January, 1933, many amendments will be offered, each calculated to cure the weak spots in the law. Half a dozen drafts of relative amendments are now being drawn to submit to the lawmaking body for its consideration.

Primary Adopted in 1904. The direct nominating primary system was adopted by the people of the general election two years ago, so that in the last 13 years the electorate has had ample time in which to observe closely the workings of the law and its good and bad qualities.

Even original champions of the system, who ardently advocated it as a panacea years ago, have now come to modify their views and confess that the law needs "fixing." The primary did away with the party boss but raised a crop of lesser bosses, beholden to no party organization. The state of Oregon, which adopted the primary system after Oregon led the way, is now in revolt against its particular primary law and both parties, through their leaders, are determined to provide amendments which experience has demonstrated are essential.

In the last ten days many republican county central committees have been organized in Oregon. Several have adopted resolutions demanding either the repeal of the present primary or its modification. Only one county—Umatilla—has come forward with resolutions offering "amendments" to the present statement of allegiance to the primary law.

Present System Opposed. Lane county republican committee received "letters" unilaterally opposed to the present primary system as written on statute books of Oregon.

Union county republican committee favors a change in the system and approves of the New York primary plan, which had the sanction of Colonel Roosevelt. The state committee from Union county, Bruce Dennis, has been asked to urge upon the state committee the need of an improvement in the present primary and ask that organization to work to the effect that a campaign of information regarding the New York plan be started in Oregon.

Benton county republican committee has gone on record expressing its belief that "the primary law in Oregon is inimical to party government and therefore to the best government that it can give us; that it is unduly expensive to the state and county as well as to the candidate; that it tends to discourage the state citizen from striving to enter public service; that it is immensely disadvantageous to the rich and disadvantageous to the poor, other things being equal; that it encourages self-seekers and incompetents to run for office."

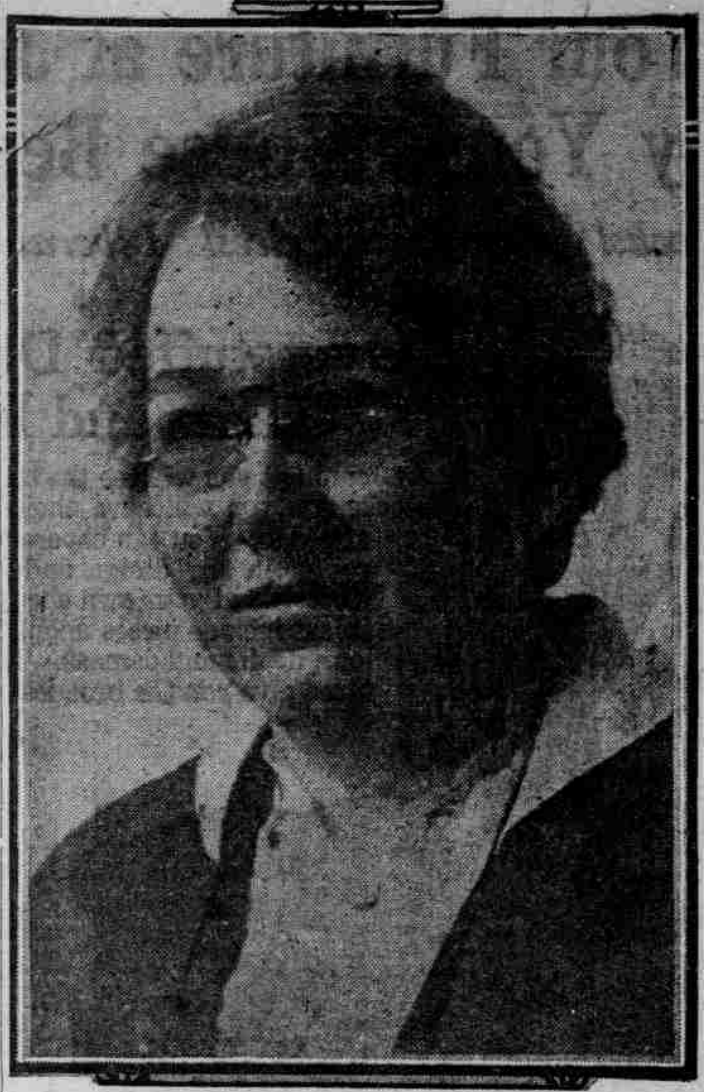
Taxation Increase Cited. Douglas county republican committee holds that the primary system is largely responsible for the great increase in taxation and declares that every vote cast in the primaries in Douglas county last month cost the taxpayers of that county approximately \$1. Also, contends Douglas republicans, the primary is causing factions and is causing the destruction of the party at the general election and it is also destroying the political parties by preventing them from advocating a platform on which the voters are to stand. Douglas wants a convention system with a party platform.

Marion county republicans point out the heavy cost of taxpayer candidates and say: "Without depriving the people of any of the benefits of the primary system or impairing its value as a means of giving the people within the party a rightful expression as to their choice of candidates, we demand the restoration of the right to hold state and state conventions, not only with intent of maintaining our own party organization, but as being vital to the existence of popular government."

No formal resolutions on the primary were adopted in the organization of the Willamette county republican committee, but members speaking individually, expressed themselves as strongly favoring some change in the law. A similar affiliation developed in Yamhill county.

Expense Main Indictments. Thus far the main indictments against the primary are its expense, its disruption of political parties, its prevention of party councils through convention, its waste of time, its permitting candidates to run without any sort of platform, they may care to put forth without responsibility to party and the strange quirk which permits candidates to be put into the field by secret societies and yet which prevents political parties from doing that very thing.

EX-OREGON WOMAN WHO IS VICTIM OF BRUTAL MURDER JACKSON, MICH.



MISS ALICE MALLET, WHOSE DEATH COMES AS SHOCK TO NUMEROUS PORTLAND FRIENDS.

MANIAC IS BLAMED FOR DEATH OF GIRL

Portland Friends Mourn for Miss Alice Mallett.

CHARACTER IS PRAISED

Social Worker Slain in Michigan Well Known to Many Now Living in City.

Numerous Portland friends of Miss Alice Mallet, social worker, who was murdered at Jackson, Mich., last week were unable yesterday to account for the attack on her unless it was from some maniac loitering near the Florence Crittenton home, where she was working as assistant matron.

That there was a love affair which would have caused some disappointed suitor to slay her, extremely is unlikely in the belief of those who knew her during the many years she resided in this state. Neither do they believe that robbery could have been the motive, as she never carried large sums of money nor wore jewelry of an expensive character.

Friends Lament Victim. "News of the death of Miss Mallett has brought great grief into our home," said Mrs. Edward L. Wells, wife of the district weather forecaster. "She lived in our home for two years while she was engaged in Y. W. C. A. work, and we knew her as one of the most cheerful, bright, conscientious girls, who took unusual interest in any work she undertook."

Mrs. William Cuddy, 131 East Third street, is another Portland woman who was a close friend of the murdered girl, and who was shocked greatly when news of her death reached Portland. "I had known her and the other children ever since they were small girls, and knew her to be one of the most lovable characters one might hope to meet," said Mrs. Cuddy. "It is certain that her death was at the hands of some desperado, and it is hard to think what such a useful girl, in her work with the young women of this and other states is, had to die in such a manner."

Girl in Social Work. Miss Mallett, according to Associated Press dispatches, was slain within a short distance from the Florence Crittenton home at Jackson, Mich., as an assistant matron. Just a short time before she had been engaged in Y. W. C. A. work at Flint, Mich., and had considerable experience in social work of this character.

She comes from a pioneer Oregon family, her mother and eight brothers and sisters now living at Ontario, Or. Her father died less than a year ago.

Wheat Growers to Confer. PENDLETON, Or., June 10.—(Special.)—Wheat growers of this section will meet here June 14 and will be addressed by George C. Jewett, general manager of the northwest grain growers' association, on co-operative marketing and wheat prices. Meetings will be held throughout Umatilla county during this month by the co-operative association. Umatilla county is the largest wheat-producing county in Oregon and so far the farmers in this section have not joined the association. The campaign for contracts is expected to meet with less opposition this year, it is declared by grainmen.

Garden Stuff Aided by Rain. WHITE SALMON, Wash., June 10.—(Special.)—Three distinct claps of thunder Thursday afternoon heralded the approach of the much-needed rain which came early Friday morning, but the shower while it lasted, was not sufficiently heavy to help the strawberry crop to any great extent, though it was a boon to garden truck. The berry yield will not be as heavy as first estimated, but, with cooler weather now prevailing, fruit grower in Columbia and other north-east of here is maturing more slowly and the quality is excellent. Only one car of Clark seedlings has rolled this far, which was consigned to eastern parties.

Reunion Arrangements Made. CENTRALIA, Wash., June 10.—(Special.)—Announcement was made today that arrangements have been completed for the semi-annual reunion of the Davis-Prince-Layton association, to be held at the Forest grange hall on June 17. An all-day session will be held, with dinner at noon and a dance at night. Mrs. Elsie Nimsire of Dupont is president of the association, which is composed of descendants of J.C. Davis, Rebecca Prince Turrell and Samuel Layton, three of Lewis county's first settlers.

Crew to Open Highway. Road to Crater Lake Lodge to Be Cleared from Snow Blockade. MEDFORD, Or., June 10.—(Special.)—Superintendent Alex. Sparrow of Crater national park left today with a crew of 10 men today in automobile trucks for Crater lake. They will go as far as they can by automobile and then dig in through the snow to Anna Spring camp, where they will make their headquarters for several days while they attempt to clear the roadway of the deep snow from there to the lodge, five miles away. It will take some time to clear a

way to the lodge. Notwithstanding that there is now six feet of snow at the lodge and four feet at Anna Spring camp, the present outlook is that tourists can go all the way to the lodge by automobile when the Crater lake season opens July 1. In past years visitors to Crater lake on opening days sometimes had to leave their cars at Government camp and go to the lodge, a mile away, by foot.

According to present plans Superintendent Sparrow and his secretary, H. H. Long, will move their office and records from the federal building in this city to Government camp about July 15, for the season.

EPISCOPALIANS TO MEET

State Conference to Be Held on Gladstone Chautauqua Grounds. Plans for the first Episcopal state conference to be held in Oregon have been almost completed, use of the Gladstone Chautauqua grounds during the week of July 14-21 having been obtained and the programme well outlined. There will be lectures and inspirational courses by capable churchmen and lay workers. Many who attend are expected to live on the grounds. Among arrangements completed have been the engaging of competent women who will instruct and amuse the children, so all mothers may enjoy the events of the lecture programme. "The complete programme will be ready for distribution this week. Copies will be distributed through the Episcopal clergy of the city and may be obtained from C. I. Moody, 195 Fourteenth street, Now, who is chairman of the publicity committee."

LEGION TO HOLD PICNIC

Opening Ceremony for Auto Park to Be Next Wednesday. OREGON CITY, Or., June 10.—(Special.)—Much interest is being taken in the big community picnic to be held in the Hawley Automobile park next Wednesday night, under the auspices of Willamette Falls post, American Legion, assisted by the park board. The Oregon City band will furnish the music. This will be followed by a ball in the big pavilion. Willard P. Hawley Jr. presented the committee with a \$50 check this morning to be applied to the fund.

Teachers to Have Institute. PENDLETON, Or., June 10.—(Special.)—Umatilla county teachers institute will be held here during the first three days of November, according to W. W. Green, county school superintendent. The past two years the county institute has not been held, the teachers all attending the summer normal school in Pendleton. It is announced here that the holding of the institute will not in any way interfere with the summer normal and the attendance guaranteed for this is greatly in excess of that of last year.

Negro Held as Suspect. Circus Employee Detained in Ohio for Mallett Murder. JACKSON, Mich., June 10.—Authorities here believed tonight they were nearing a solution of the mystery surrounding the slaying Thursday night of Miss Alice Mallett, well known to many here, whose head was crushed with an axe. Their investigation today, the officers stated, tended to show that the arrest at Painesville, O., of a negro circus employee, who is to be brought here tomorrow night, might clear up the slaying. The negro's clothing was said to have been stained as though with blood, which led to his detention. Special services for Miss Mallett are to be held, after which the body will be shipped to the home of her parents in Ontario, Or.

Crew to Open Highway. Road to Crater Lake Lodge to Be Cleared from Snow Blockade. MEDFORD, Or., June 10.—(Special.)—Superintendent Alex. Sparrow of Crater national park left today with a crew of 10 men today in automobile trucks for Crater lake. They will go as far as they can by automobile and then dig in through the snow to Anna Spring camp, where they will make their headquarters for several days while they attempt to clear the roadway of the deep snow from there to the lodge, five miles away. It will take some time to clear a

SCHOOLS' GROWTH CITED BY OFFICIAL

70 New Classrooms Declared Needed Each Year.

BOND ISSUE DEFENDED

R. H. Thomas, Clerk, Reports on Normal Annual Increase in Number of Pupils.

News items and comment on the side of the approaching school bond issue have failed to take into consideration the number of buildings required to take care of the annual increase in school children, approximately 25%, and requiring 70 new rooms every year, asserted R. H. Thomas, clerk of the school board, in a memorandum prepared yesterday at the request of School Directors Newell, Shull and Woodward. As made public by Director Shull, the report is as follows:

"Comparing with your individual requests on the telephone this morning, the following will give some data in reference to the items appearing in the news column on page 7 and the editorial column on page 10 of The Oregonian of this morning's issue.

"There were quite a number of visits made this office by members of various committees—particularly of the city club. Sometimes they wanted general information—sometimes specific information. They also made calls on the superintendent and individual directors.

Data Given Out. "The data requested were always supplied. The most detailed request was presented to Director Woodward by the city club and by him forwarded to me on the 22d ultimo. The details were supplied May 26, 1932. Since that date we have had no calls for further information. This detailed statement called for proposed increases during the fall of 1932 and during the year of 1933—all of which were worked out as accurately as a forecast could be made. The special form of detail was suggested by an accountant from the city club, who stated the material supplied was exactly what he wanted.

"Touching the editorial, statement is made that special activities, including cooking, sewing, and manual training, were conducted for five months and then suspended for four months, saving \$66,000 on the suspension; and that restoration of

these activities was placed at \$165,000. This work had been conducted for six months instead of five, as stated in the editorial. The saving for the four months was estimated to be \$66,000—but to restore these activities for the ten months of the entire school year from September, 1932, to June of 1933, was placed in the pamphlet at \$165,000. The figures are correct.

Chart is Explained. "In reference to the tabular, the editorial suggests that one chart showing the increase in school registration and decrease in assessed valuation does not take into account the elementary school fund. The chart was intended to show only these two features. No attempt was made to show the manner in which the board had spread out a decreased income over an increased school attendance. That explanation is given in the pamphlet under the head of 'Expense Greater Than Income,' on pages 3 and 5.

"The income of 1931 and 1932 for school district No. 1 are as follows: Income 1932 levies.....\$2,032,204.05 Other than levies.....1,378,300.00 Estimated income 1932.....\$3,410,504.05 Income 1931 to June 30.....\$2,413,359.29 Increase 1932 over 1931.....\$1,177,144.42

"This is an increase of 49 per cent of 1931 and 67 per cent, as set forth in the editorial. It will be noted that the percentage of increase in income from all sources is 52 per cent, while the increase in school attendance is 56.8 per cent.

Comparison is Suggested. "The editorial suggests a comparison of the tax levies of the city from all sources is 52 per cent, and refers to other moneys received by the school district outside of the district levies which were the ones set forth in the pamphlet, 'For the Sake of Your Children.' The city of Portland has an estimated income of \$891,928.27 over and above the levies shown in the chart. School district No. 1 has an estimated income of \$1,378,300 over and above the levies mentioned in the chart. Both of these figures include all of the income for both the city and the school district outside of the tax levies, including the elementary school fund referred to in the editorial.

In reference to the last paragraph of the editorial that it should be made clear that the decrease in school revenues is more than \$1,000,000 in 1932, as compared with 1931, refers to the rejection of the special building tax proposed to the school district outside of the district levies, under the heading of 'Why the Income Cannot Be Increased,' on pages 7 and 8. It is fully set forth that the school board, as such, cannot levy more than 6.5 mills. Anything in excess of this must be under special authorization of the electorate.

Former Levy Voted Down. "The chart on page 6 reveals the points at which an additional levy was authorized by the electorate in excess of the 6.5 mills, which is clearly shown by the d-r-p on the line at 1923 from that of 1921. This illustrates that the board levied its

maximum but that the electorate declined a further levy. This chart, showing the tax levies of the city of Portland and of school district No. 1, is taken bodily from the chart prepared by the tax supervising and conservation commission of Multnomah county, known as chart No. 4, and is found on page 13 of its 1931 annual report.

It is to be remarked that neither the news items nor the editorial comments upon the number of buildings required to take care of the annual increase in the number of school children, which approximates 2500. The housing facilities for this number of children requires 70 rooms annually. That funds were not available to build proper permanent housing accommodations for these children is the reason there are so many of them crowded in portable, old wooden frame buildings of great age, in basements and in rented quarters.

Correct Figures Quoted. "In the statement of the board entitled 'For the Sake of Your Children' where definite figures are given, the figures are correct. Where estimates are given, they are accurate as can be made. It is possible to forget the main issue by overlooking attention to small details and questions of minor importance—all of which tend to befog. It is agreed by every institution, club and organization which has looked into the needs of the schools that the housing facilities for the boys and girls of this city are highly unsatisfactory.

With this definite condition unquestioned, it would seem that the great-hearted citizens of this city would not spend much time in jangling over small matters, but would open their hearts and purses to the safety and comfort of the little people of this city."

MEMORIAL IS SUGGESTED

Hawaiian Prince's Service in Congress Remembered.

HONOLULU, T. H.—Construction of a monument by public subscription to the memory of the late Prince Jonas Kaho Kahanaloa, who served as Hawaiian delegate to congress for 20 years, has been suggested by Raymond C. Brown, secretary of the territory.

"While the Hawaiian rehabilitation project, now well on the way to success, is a living monument to the work of the late prince, a statue, shaft or building, such as a public auditorium, would be something tangible dedicated to him and would stand as a reminder of his brilliant career," Secretary Brown said.

Prince Kuhio, the last titular representative of the old Hawaiian monarchy, died last January.

Woman's Club Holds Benefit. WHITE SALMON, Wash., June 10.—(Special.)—The women's club held a benefit 500 party at the home of Mrs. B. L. Heaman on Thursday to raise funds for the erection of a modern clubhouse on Jewett avenue.

Phone your want ads to The Oregonian, Main 7070, Automatic 540-25.

Great High-Water Sale of WALL PAPER. The river is steadily rising. There are over one hundred thousand rolls of New Wall Paper in our two basements. It has got to be moved. This means to sell it or send it to the warehouse—we prefer to sell. To move this big stock quickly we are cutting prices one-fourth, one-third, and in many cases one-half. Remember, our regular prices are the lowest in the Northwest. This sale cuts them in two. Sale starts tomorrow.

5c Per Roll: Thousands of rolls of Wall Paper worth 10c to 15c to be closed out at 5c roll when sold with border at regular price of 3c to 5c yard.
10c Per Roll: Choice of 25 patterns in values to 25c a roll, including many ceilings. Buy what you want while they last at 10c roll.
25c Per Bolt: 30-inch ingrain and oatmeal pulp papers in five colors, to go at 25c for a full bolt of 100 square feet. Sold only with border at 5c yard.
Duplex Oat Meal: 30 inches wide and 15-yard long bolts, covering 100 square feet. Some charge 90c bolt. Choice here at 39c full bolt.
Varnish Tiles: The washable paper for kitchen or bathroom in big variety of colors and patterns. Very special at 22 1/2c roll.
Tapestries 25c: Choice of a big line of regular 50c and 65c tapestry patterns to close out at, your choice 25c roll.
Harmonellas: These pretty blends in six colorings, worth \$1.00. Some ask more. Very special during this big sale at 55c full bolt.
Ceiling Papers: All 10c ceilings at.....9c All 12 1/2c ceilings at.....10c All 15c ceilings at.....11c All 18c ceilings at.....14c All 20c ceilings at.....15c All 25c ceilings at.....18c All 35c ceilings at.....25c All 40c ceilings at.....30c
Cut Out Borders: Pretty cut-out borders to match any paper at 5c, 7c, 10c and up to 25c a yard. They complete the room.
Dealers and Builders: During this big sale we will make you very attractive prices on any paper in the store in bundle lots. Our stock is all new and fresh. Remember, no water has touched it. We are selling it before the water comes. Every Sale Cash—Don't Ask for Credit
50 rolls of Heavy Wall Felt at, roll.....\$2.19 Best grade Kalsomine at, a pound.....9c 35c Ground Gypsum for sizing to go at, pound.....25c That splendid Wear Well Paint, in outside white and all colors at, gallon.....\$2.45
Sale Starts Tomorrow—Continues Through the Week—Tell Your Friends—If You Can't Come, Write for Free Sample Book and Prices
Smith Wall Paper House 108-110 Second Street, Portland

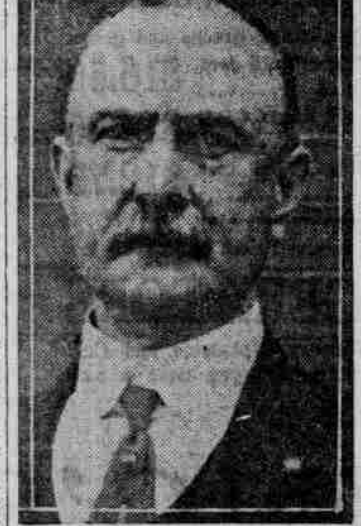
NEW CHAIRMAN VETERAN

W. E. EDDY WELL KNOWN IN SPANISH WAR CIRCLER.

Head of Republican Committee is Eager for Harmony in Party and Urges Loyalty.

W. E. Eddy, newly elected chairman of the Multnomah county republican committee, was born in Ohio and went into the Spanish-American war from that state. Captain Eddy is an engineer by profession and has followed this line since his arrival in Oregon about 15 years ago. For a time he was connected with the state highway department.

To most republicans of Multnomah county Captain Eddy is unknown, for he has not been actively identified with the party organization in the past, although he took an interest in matters political. The new republican county chairman is well-known in Spanish-American



W. E. Eddy, chairman Multnomah republican committee.

war veteran circles, and ex-service men aided materially in his election as chairman. In accepting the position as head of the republican party in Multnomah county, Chairman Eddy announced that he hoped for harmony and promised and advocated loyalty to the entire party ticket. The election of chairman is for a period of two years.

BUNCO SUSPECT CAUGHT

\$1714 IN MERCHANDISE IS RECOVERED BY POLICE.

Arrest of Harry Starr Said to Have Blocked Plot to Mince Portland Wholesalers.

With the arrest by police detectives yesterday of Harry Starr, detective James Arthur a plot to mine ten Portland wholesale firms out of more than \$2000 in merchandise, was nipped in the bud. Starr was held on a charge of obtaining money by false pretenses and issuing worthless checks.

Coming to Portland early last week Starr was said to have opened an account at a local bank, depositing \$200. A short time later he withdrew \$111 but \$239 of this money. But he still had his check book and began issuing checks for large sums with a lavish hand, the police said. He rented a room in the McKay building which was used as the base of operations. With a partner who has disappeared, he was then said to have gone to many of the wholesale houses, where he ordered goods of every description, giving a worthless check in payment. The goods were all ordered sent to the room in the McKay building. All would have gone well had not the Hometown Hardware company become suspicious. This concern investigated the check before it accepted its bill of goods to the McKay building, and found it to be worthless. Police investigation then disclosed that other firms had fallen for the game of the suave, well-dressed stranger. When police raided the room they

200 DRESSES ON SALE

\$29.50 THE FAMOUS Alder at Park