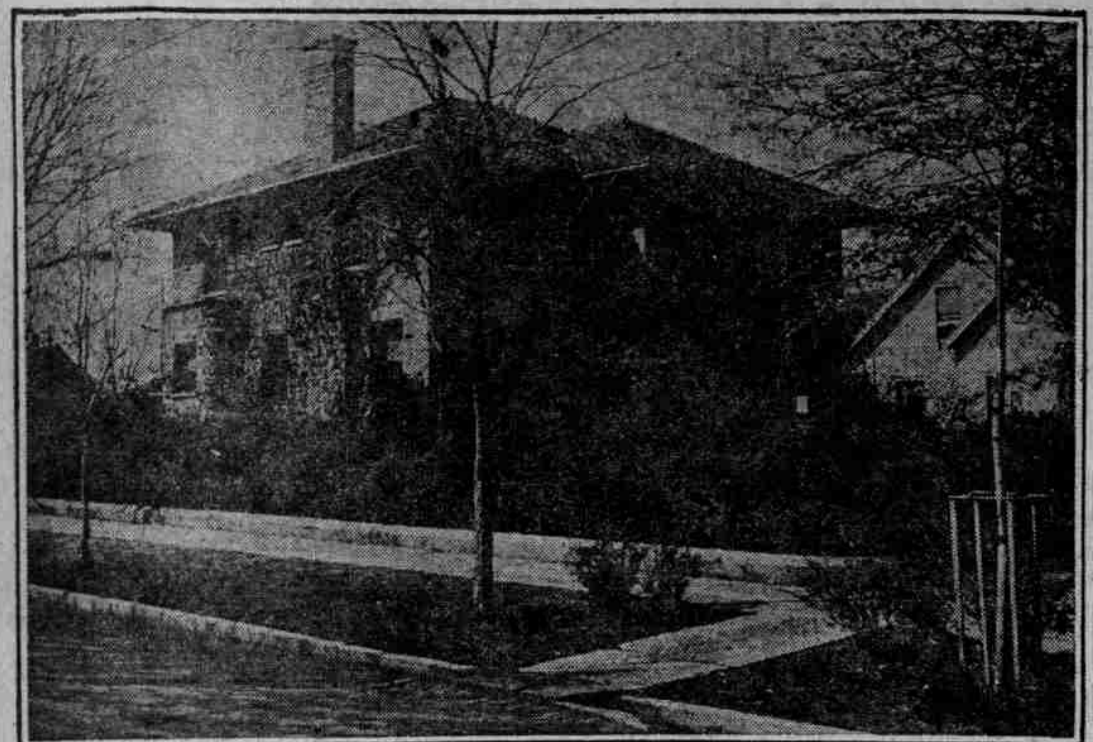


ATTRACTIVE TYPE OF STONE HOUSE, ECONOMICAL TO BUILD. ADAPTED TO SMALL TOWN OR SUBURB

Simple, Honest Stone Masonry Decidedly Moderate in Cost and Absolutely Permanent—Distinction of Design Mellowed and Becomes Enhanced in Beauty With Age.



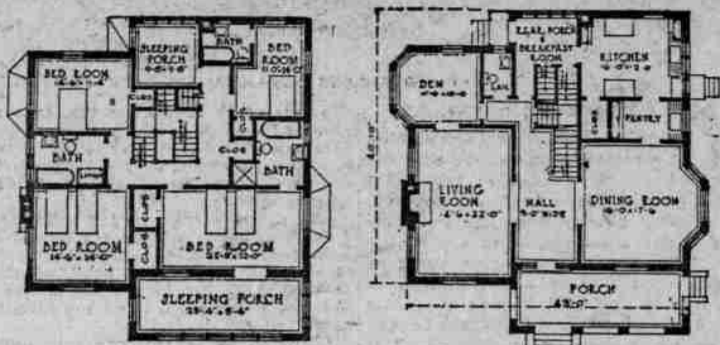
The design shown this week is an example of inexpensive, moderate sized, stone house construction in a small town. All lovers of the beauty of natural rugged stone will be sure to appreciate this home.

The house, as presented in this picture, has a somewhat pretentious appearance, on account of the fairly large corner lot and the setting of fine shrubbery. However, it is not a large house. It is an exceptionally good example of a type of stone house which is economical to build, and which is adaptable to the small town or suburb, as well as to the large city. It is especially effective when built on a lot which is wide enough to afford space for the planting of shrubbery around the foundation. This house serves also as an illustration of how appropriate shrubbery will give accent to the walls of rock faced stone. The only cut stone used is that of the door and window sills, lintels, and the coping on the bay window. For all of the rest of the house Indiana limestone is used.

Simple, honest stone masonry of this character is decidedly moderate in cost and absolutely permanent. It possesses a distinction that mellowed and becomes enhanced in beauty with age. The grayed buff tones of the walls furnishes a most pleasing background for the shrubbery. The roof, which is of variegated red Spanish tile, gives the desirable note of color. A plain shingle or a slate roof could be substituted for the tile, however, in order to effect a saving in cost. Other attractive features of the exterior design are the ample stone chimney and the wide overhanging of the eaves.

The house proper is 48 feet wide by about 38 feet deep, including the bay window extensions on each side and the porches on the front and back, the over-all width and depth are 48 by 48.

The walls, which are entirely of stone, have a thickness of ten inches.



They are furred on the inside with wood strips in the usual manner, except on the porch, where limestone forms the inside finish. Walls of precisely similar appearance could be laid up with a facing of stone three or four inches in thickness, backed up with brick or hollow tile of whatever thickness is necessary to comply with the requirements of any particular building code or regulations. Where an eight-inch wall is permitted for residences, a four-inch limestone facing, bonded with eight-inch stone into a four-inch backing of brick, would probably be the usual practice.

The porch on the front of the house is partly inclosed on the lower floor. The sleeping porch above is fully inclosed. There are two flights of steps at the lower front porch—one from the walk leading out to the front side-walk, and the other from the automobile driveway at the left side of the house.

On the first floor there is a large center hall. The living room, which has an open fireplace, is to the left, and the dining room is to the right. This plan could be reversed, if it were so desired. Back of the living room there is a study or library, and a lavatory. Behind the dining room there is a well-arranged pantry and

kitchen. At the end of the hall is a breakfast room, or porch. The plan is so arranged that the study and breakfast room may be shut off entirely from the front part of the lower story, without obstructing the stairway. This arrangement permits the greatest privacy.

In the second story there are three good-sized bedrooms, all having ample closet space, two bathrooms, a maid's room and bath, and two sleeping porches. These porches could be used as sun rooms instead of sleeping porches.

The placement of the stairs in the middle of the house makes them convenient to all parts of the second story.

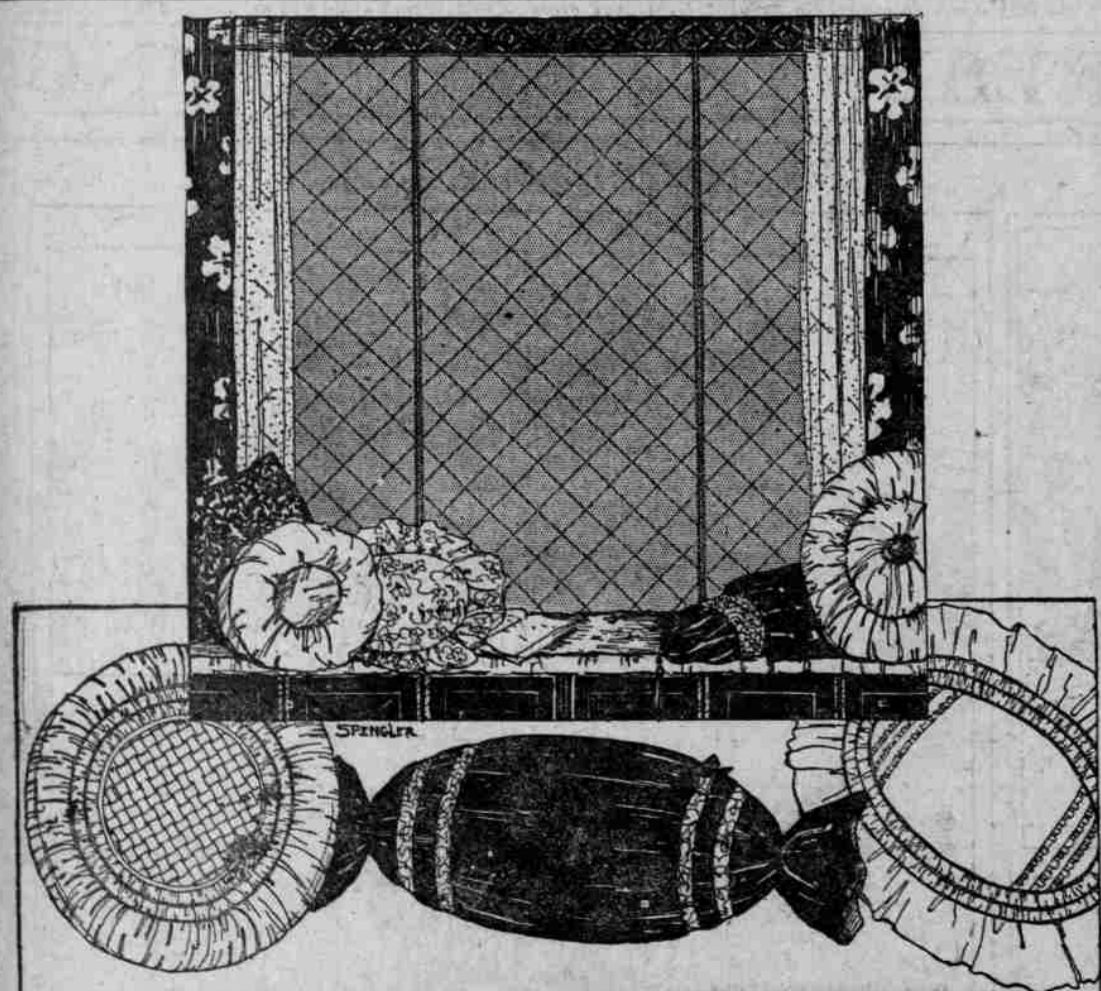
There is no attic story, but the space under the pitched roof is utilized as an attic storage space by the simple expedient of an enclosed stairway at the rear of the main stairway, leading up to the same from the second story hall.

There is a cellar under the entire house. The well-arranged laundry is entirely separated from the furnace room.

Homes of this type never age ungracefully. This important point is, unfortunately, frequently overlooked by home builders.

SOFA PILLOWS MADE IN FASCINATING VARIETY OF SHAPES AND MATERIAL NOW

Perhaps One of Most Attractive Is That Made of Changeable Taffeta in Blue—Shape Is Round With Edge Finished With Double-bias Puffing Which Is Four Inches Wide.



BY CLOTILDE.

SOFA PILLOWS are made in a more fascinating variety of shapes and materials than ever before. One sees them made of every sort of material, from velvet and gold lace to gingham and burlap.

Perhaps one of the most attractive of the new ones is that made of a changeable taffeta in blue. It is a round pillow with the edge finished with a double bias puffing. This puffing is four inches wide. The center of the outside of the pillow, about 18 inches in diameter, is formed of double one-half inch wide bias strips of the taffeta, laced in and out, close together. The edge of this lattice-work is covered with a one-half inch wide bias fold, and between this and the edge there is a shirred piece of the silk, with two covered cords, one inch apart.

To make this, one would cut a strip of the taffeta three times the measure of the outside edge of the pillow. Shirring lines are marked off evenly on this strip, having the tucks through which the cords are run an even distance from each other and from each edge. The fold that covers

the latticed edge covers the inside edge of this shirred piece as well. The under side of the pillow is plain.

Another stunning pillow is oblong in shape and is made of taffeta. With-out the four-inch wide puffing which finishes the edge, the pillow measures 17x15 inches. Around the edge are three corded tucks, one inch apart. The silk is measured for this the other pillow. Then the space inside these shirred tucks is made of the taffeta—two clusters of shirred one-quarter inch tucks set in across each end, leaving an equal distance between the clusters in the center and at the ends. These fancy outside should be made on a thin cambric foundation cut the exact size of the finished pillow. Put the shirred tucks in the center-piece first and adjust and sew to the cambric, then put the shirred corded strip on, letting the inside cord cover the edge of the center-piece. The under side of these fancy cushions is usually made plain.

Tailored bows, bunches of flowers, and even little designs are sometimes embroidered somewhere on these tops. A long, melon-shaped pillow is made of black satin. Each end of the pillow has a deep gathered hem

faced with rose colored satin. Two bands of gold braid are sewed around the pillow, near each end, and a tailored bow in black is perched near one end, just inside of the gold braid.

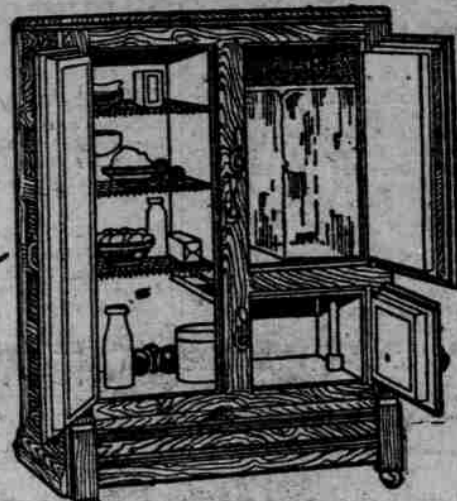
Some pillows are cut crescent shaped—indeed, every shape one can imagine is used—and if one is possessed of pieces of brocade, taffeta, silk, satins, ribbons, heavy lace, or something similar, most wonderful pillows may be made.

Observatory Established.
Scientific American.

The municipal observatory at Des Moines, Ia., which is said to be the only municipal observatory in the world, was opened last August. The observatory building is to be equipped by Drake university with an 8-inch equatorial telescope. It is to be under the control of the university and open to the public at least three times a week and at any other time on occasion may warrant.

Negro Farmers Numerous.
There were 826,257 negro farmers in the United States January 1, 1920, according to the bureau of census. In 1919 the number was 839,379.

REFRIGERATORS



Convenient Credit Terms on Any Purchase

Luggage Store

Offers Special Inducements to the Traveler

When you take a trip this summer on your vacation, your honeymoon, or for business, you will want your luggage to express character and to be built to give the best service. Every piece of luggage in our large department devoted to this merchandise has been chosen with these very points in mind. This week's specials on luggage will interest those with a new bag, suitcase, or trunk to buy.

- \$7.00 Ladies' Leather-lined Hand Bags, priced special for this sale, at..... \$5.00
- \$11.00 Genuine Cowhide Leather Hand Bags—heavy protected corners; at..... \$8.75
- \$13.00 24-inch Leather Suit Cases in good mountings, priced at..... \$11.65
- Auto Trunks—just the thing for the running board at..... \$9.50
- \$41.00 Wardrobe Trunks trimmed with heavy hardware and well riveted; at..... \$32.75
- Wardrobe Trunks with lift top, equipped with shoe box, laundry bag, ironing board, hat box, etc. \$54.50
- Heavy 3-Ply Vulcanized Fiber Wardrobe Trunks fully equipped and fitted with special hardware \$58.50

Distinctive Gift Pieces for June Brides



Tea Wagons

There is perhaps no other gift for the June bride which will win such instant appreciation or provide so much lasting pleasure than an attractive tea wagon in the walnut or mahogany finishes. We have dozens and dozens of styles of them to choose from. The prices range up from: \$18.75, \$28.75, \$32.75



Davenport Tables \$28, \$33 and Up

The art of furniture that is really necessary in every well equipped home. We show them in the William and Mary, Queen Anne, Cromwellian, and Italian designs in sizes from sixty to seventy-two inches. Davenport tables make splendid gift pieces and you can choose here from some fifty different designs.



Spinet Desks

The desk that introduces an artistic touch into living rooms or bedrooms where it is used. We can think of no more appropriate gift for a June bride than a desk of this character. We show them in colonial and Queen Anne styles ranging in price from: \$39.50, \$45.00, \$59.00



Fine Rockers Up From \$22.50

A handsome upholstered rocker will add a touch of real distinction to the living room and in addition to its artistic value, will provide real comfort. We are showing many different styles of rockers very suitable for gift pieces, and you will find our prices very low indeed.



What's New in Floor Lamps

If you want to see how much more artistic the floor lamps of today are than those of the past, spend a few minutes in our display of wonderfully new designs. There is no article of furniture so decorative or no gift piece so acceptable as a good floor lamp. We have them priced up from \$24.50, \$29.00, \$37.50

The New Draperies

With our drapery stock brought entirely up to date by the arrival of recent purchases, you can come here now for draperies with full confidence that you are selecting from the very newest things. Many new fabrics are being featured for this season, and if you want your home up-to-the-minute in every respect, you will want to see this exhibit. Below are offered a number of specials in drapery materials.

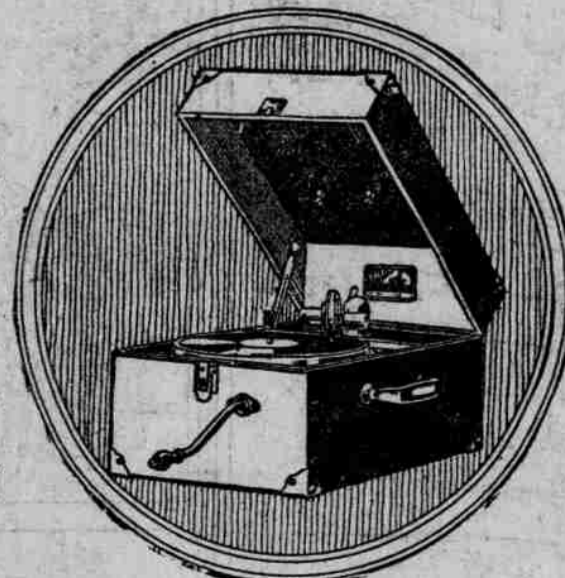
- 50c Cretonnes, this week, special, yard 39c
- \$1.00 and \$1.50 Cretonnes, special this week, yard 72c
- 65c Cretonnes, special this week, yard 48c
- 75c Cretonnes, special this week, yard 57c
- \$2.25 Plain Sundours, 50 inches, in blue, pink, yellow, brown, and green; a yard..... 98c
- Filet Net Curtains, 2 1/2 yards in length, in white, cream, beige; \$4.85 special, a pair

Use Your Credit



This Quartered Oak Six-Piece Suite \$98.50

A big pedestal dining table, a roomy buffet with large mirror, and four genuine leather seat dining chairs all in quartered oak, are offered at this extremely low price. It is a big dining room suite special, offered for this week only.



For Your Vacation

Portable Victrolas \$5 Cash—\$1 a Week

The portable Victrola No. 50 is no more difficult to carry than a traveling bag and it is built to withstand all the wear and tear of travel. At home or away, your summer days will be happier with a Victrola. The No. 50 portable is priced at \$50.00 and can be had on such easy credit terms that no one really need be without good music on their vacation. Portables in other makes as low as \$45.

We Charge No Interest



A Period Suite in Ivory

Any Three Pieces \$75.00

These pieces are up to the standard of quality you would demand in patterns costing twice the price. Select any three pieces you need, make up the suite as you want it. The values are the best we have ever offered on good bedroom furniture.

Your Credit Is Good USE IT

