

GOVERNMENT TO AD IN HIGHWAY WORK

\$15,000,000 to Be Used in Western States.

FOREST ROADS BENEFIT

Outlet for Timber Operations as Well as for Better Control of Fire Are Planned.

Roads are needed also in the utilization of the abundant mountain forage as summer range for the great herds of sheep and cattle raised in the west.

Government Aid Needed. In many places the national forests blanket the great mountain ranges...

RHYMES OF THE ROAD. Have you been reading Dudley Glass' "Rhymes of the Road"?

public demand for government help in building roads up through the rugged canyons and over the lower passes to provide transmountain routes for commercial and social travel between the separated cities and communities.

State to Be Assisted. Furthermore, the new legislation very wisely provides for progress on the three general classes of roads within the forests.

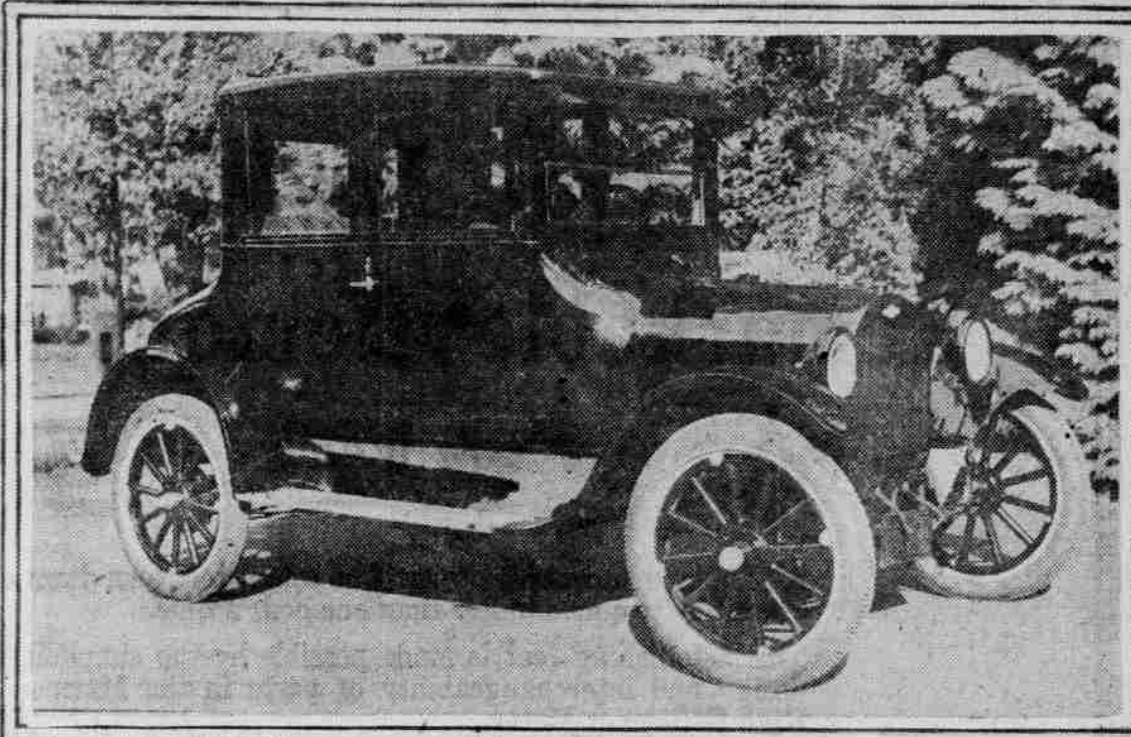
The \$5,000,000 balance called the forest development fund is intended for the roads and trails particularly needed in the actual management and utilization of the national forests.

Seated at the wheel of a big motor truck and followed by a fleet of automobiles, Rev. E. J. Prescott, a Unitarian pastor of North Andover, Mass., goes out every Sunday morning and gathers his Sunday school pupils within a radius of seven miles.

nothing!!!! will ever stop men

—from spending their money where they get the most for it! For example: Motorists who have their repairing done here have told us repeatedly that we SAVE THEM 10 TO 60 PER CENT on annual cost of operating their automobile.

MEET THE LATEST CREATION OF THE CHEVROLET, THE FOUR-PASSENGER COUPE.



TINY CAR TO BE IN RACE

FIRST ONE-MAN MACHINE TO COMPETE AT INDIANAPOLIS.

Marmon Wasp to Be Forerunner of Those That Will Be in Big Event of Next Year.

INDIANAPOLIS, May 27.—The first "one-man" car since Ray Harroun won the initial 500-mile race, with the Marmon Wasp, will appear in the tenth annual five-century race at the Indianapolis motor speedway Tuesday, May 30.

Incidentally this is the first year since 1911 that the rules permitted one man to ride in the car alone. His mechanic will be a bit of a mirror perched on the cowl above his head, so that he can look ahead and at the same time keep an eye on his competitors coming from behind.

Davidson's car is about a year ahead of its time. He has elected to drive the smallest engine model in the field of 32 starters. His engine will be two-thirds the size of the other entrants, as it only measures 120 cubic inches piston content, slightly less than two liters.

RUBBER TIRES ONCE OPPOSED Seventy Years Ago Buggy So Equipped Declared Dangerous. About 70 years ago George H. Miller of Hyde Park, Mass., made a set of rubber tires for a buggy.

Spring Forethought. Oil the springs. Tighten the fan belt. Adjust the carburetor. Examine cylinders for carbon. Take an inventory of the tool box and accessories.

GILL AUTOMOTIVE SERVICE COMPANY. 129 N. 10th Bdwy. 3782. Advertisement for automotive services.

COAST DEVELOPMENT NOW HELD ASSURED

Roosevelt Highway Through Lincoln County Promised.

STATE READY TO PROCEED

Engineer Nunn Tells People of Tillamook Work on Several Sections Will Be Pushed.

TILLAMOOK, Or., May 27.—Herbert Nunn, highway engineer, met this week with the county court at the courthouse in this city and invited the city news reporters to attend, when Mr. Nunn gave out the best news that Tillamook county ever heard along the line of county and coast improvement.

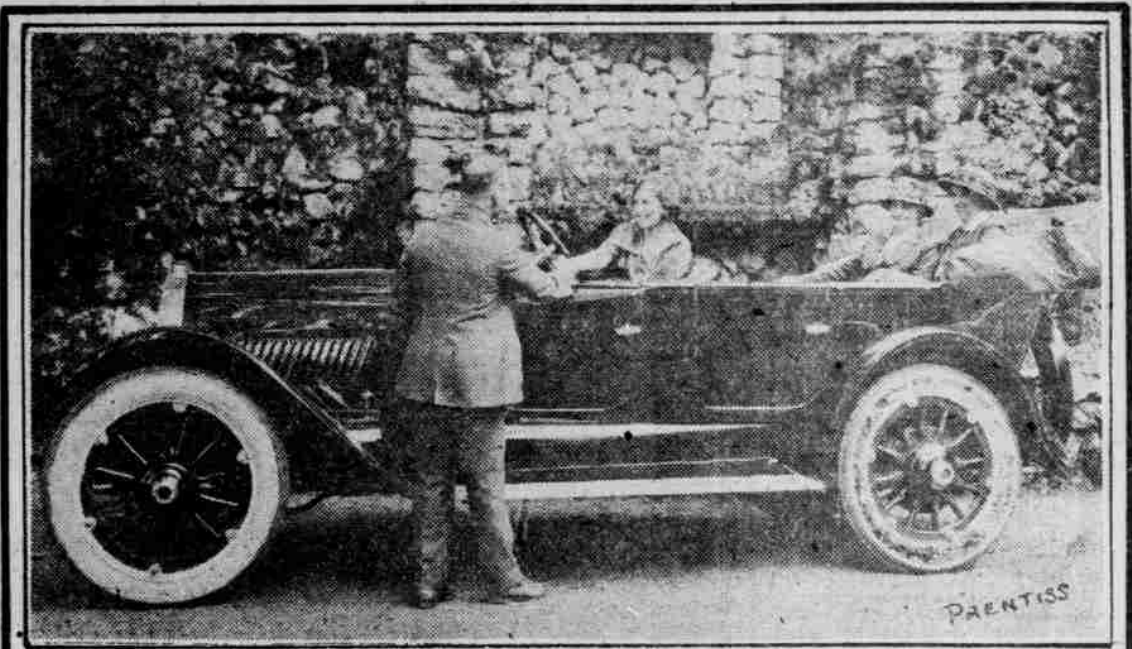
Another link to be built is that from Neskevin to the Lincoln county line, a distance of 7 1/2 miles, which will be let by the state commission on May 31.

State Ready to Proceed. Another important announcement by the state engineer was that the route via Garibaldi and Brighton to Wheeler had been designated as a part of the Roosevelt highway and that the state would go in with the county on a 40-80 basis to build it.

Development Now Assured. Mr. Nunn also declared that Oregon would be the first state to finish the Roosevelt highway through its entire length, and that the counties along the route, the government and the state would co-operate in pushing the work to completion as fast as possible.

HERE'S A REAL TIRE RECORD Cord Tire Travels 52,000 Miles. Claims New York Motorist. Maurice M. Stone, a tire dealer of New Rochelle, N. Y., reports a United States royal cord tire which has given 52,000 miles, says a bulletin from the factory.

QUEEN OF ELKS' JUBILEE AND OLDSMOBILE CAR WHICH SHE WON.



Edward E. Cohen, head of the Oldsmobile company of Oregon, congratulating Miss Laura M. O'Brien upon her success in being elected queen of the Elks' golden jubilee recently. In the rear seat is Miss Avis Lohdell (left), secretary of Miss O'Brien's campaign, and Mrs. C. A. Zigler. The Oldsmobile eight-cylinder car was presented to Queen Laura by the Elks.

FUNDS ALLOTTED ROADS

FOREST SERVICE TO IMPROVE STATE HIGHWAYS.

Contracts to Be Awarded June 1 for 11 Federal Aid and 1 State Job in Washington.

SEATTLE, Wash., May 27.—The Washington state highway department has obtained approval of an agreement with the forest service for this work during the coming summer.

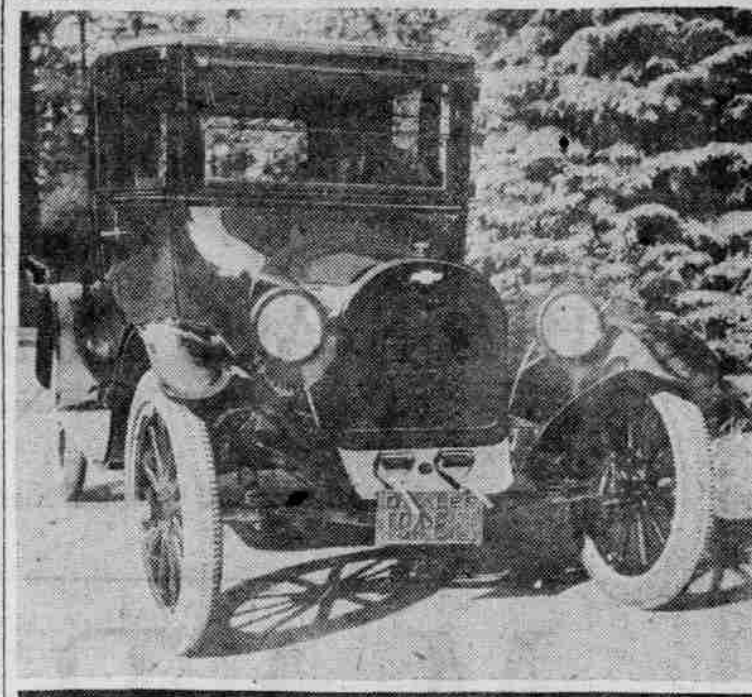
On June 1 contracts will be awarded for 11 federal aid and one state job on which work is expected to start July 1, when additional federal aid funds are expected to be available.

CLOSED CARS ARE IN DEMAND

Over Half of Franklin Output Now Closed Types of Cars.

Closed cars formed 51 per cent of the shipments made by the Franklin Automobile company last month, according to word from factory officials, received by the Brady Auto company, local distributors.

Of the various types, the sedan led in popular favor by a wide margin. A considerable demand, however, was recorded in broughams, coupes and touring-limousines, also. Counting the demi-sedan, a convertible type with many of the advantages of the closed car, the total percentage of Franklin closed car shipments would amount to 68 per cent.



Broadside view of handsome little car received last week by the Fields Motor Car company, Chevrolet dealers.

As an important addition to the closed-car family of the "49" Chevrolet comes the new four-passenger coupe, the first car of this type ever put out by the Chevrolet on the small chassis.

Tests are to continue. Value of steel reinforcement investigated. Road building is shown to be one of country's great industries and more facts wanted.

San Francisco, May 27.—The California highway commission, jointly with the United States bureau of public roads, also with the co-operation of the Columbia Steel company, in the use of its property, is to continue to complete the Pittsburg highway tests started last spring by the company to investigate the strength of different types of concrete highways, with particular reference to the effect of reinforcing steel.

Advertisement for Winton Six car. Features include: 'You may increase your engine power 20%', 'Distinctive Character', 'New WINTON SIX', 'MODEL 40 WINTON is winning new honors for the WINTON, now in the 24th year of its development as a car of flawless character.', 'This new WINTON is a triumph of six-cylinder perfections. Never, perhaps, has power been applied so amply, so silently, so responsively.', 'Model 40 is a new model—with all the refinements of a new model; but priced \$1,200 less than the preceding model.', 'A. C. STEVENS, 529-531 Washington Street, Broadway 1614.', 'more power & speed ~ less friction and wear ~ thru Correct Lubrication'.