

ALASKA FISH BARK STRANDED IN MOUNTAIN

Berlin May Be Total Loss. Cargo Salvage in Doubt. 200 MEN LANDED SAFELY

Boat in Service for 40 Years Carried 2000 Tons of Supplies for Season's Operations.

The American bark Berlin stranded Friday at Ugazuk, or Egegek, as it is known here, about 40 miles from the mouth of the Yukon river, Alaska.

The Burgess got away from the river April 24, and the following day the Berlin towed to sea. The former got through Umanak on May 12, in company with the steamer Akutan.

The vessel was laden with cannery stores and material for plant repairs, as well as 1000 tons of supplies.

For 15 years the Berlin has sailed in the fleet of the Alaska-Portland Packers' association service, making a voyage annually to Nushagak.

Two more additions will be made this week to the shipping board fleet temporarily idle owing to the strike situation.

Other cannery ships to leave the Columbia this season include the St. Nicholas and Rouse, owned by the Columbia River Packers' association.

Broken Spar Off Sand Island Sailed to Endanger Nets.

Baker Bay buoy No. 4, a spar in the channel to the westward of Sand Island, was broken off Friday when the lightship tender Rose was attempting to raise it.

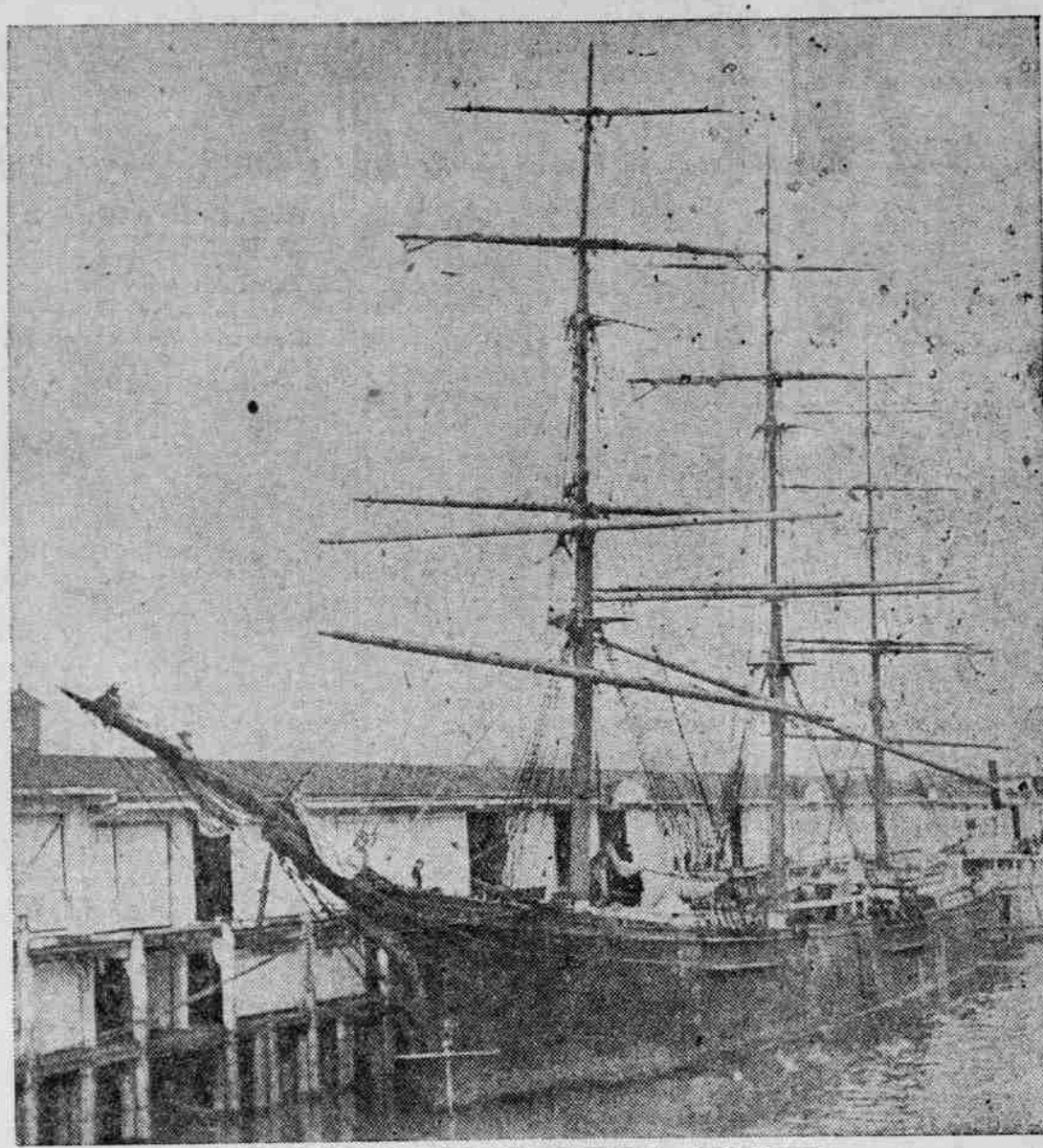
EX-CHIEF OF UNION BARRIED

Longshoremen Pay Tribute to Late Philip Carroll.

Union longshoremen turned from waterfront strike troubles yesterday to pay their last tribute to Philip Carroll, first president of the Portland Longshoremen's union.

3 COASTAL CARRIERS SAIL

PORTLAND-OWNED CANNERY SHIP PILES UP ON ALASKAN COAST AND MAY BE TOTAL LOSS TOGETHER WITH CARGO.



BARK BERLIN AS SHE APPEARED WHILE LOADING HERE.

The Rose City of the San Francisco & Portland Steamship company leaving Astoria for Seattle May 12, in company with the steamer Akutan.

Frank Schaefer, manager of the San Francisco & Portland line, who is in the city from San Francisco, will make the trip on the Rose City as far as Astoria, returning last night.

Two more additions will be made this week to the shipping board fleet temporarily idle owing to the strike situation.

Other cannery ships to leave the Columbia this season include the St. Nicholas and Rouse, owned by the Columbia River Packers' association.

Broken Spar Off Sand Island Sailed to Endanger Nets.

Baker Bay buoy No. 4, a spar in the channel to the westward of Sand Island, was broken off Friday when the lightship tender Rose was attempting to raise it.

EX-CHIEF OF UNION BARRIED

Longshoremen Pay Tribute to Late Philip Carroll.

Union longshoremen turned from waterfront strike troubles yesterday to pay their last tribute to Philip Carroll, first president of the Portland Longshoremen's union.

3 COASTAL CARRIERS SAIL

Rose City, Multnomah and Senator Get Away From River.

CLEARING OF ROCK BEGUN

RIVER SLATED TO REACH 16.9-FOOT STAGE BY MONDAY.

Willamette Falls at All Points Except Oregon City and Portland, But Increase Is Due.

Guided by a Weather Bureau forecast that the Willamette river will attain a height of 16.3 feet above zero Monday the San Francisco & Portland Steamship company made appreciable strides in clearing the river-street dock to the upper dock yesterday.

At west side steamboat docks a close watch is kept on the official forecasts so that necessary quarters can be shifted.

The fact that the Snake was at a temporary standstill yesterday did not give rise to hopes that the condition would much change the general freshet status.

Ship Reports by Radio.

By the Radio Corporation of America.

By the Radio Corporation of America.

By the Radio Corporation of America.

By the Radio Corporation of America.

By the Radio Corporation of America.

By the Radio Corporation of America.

more 335 miles east of Honolulu May 19. NORTHWESTERN, Ketchikan for Seattle, 200 miles north of Seattle.

TUSCALOOSA CITY, Mobile for Japan, 690 miles west of San Pedro May 19.

MATSONIA, San Francisco for Honolulu, 529 miles from San Francisco May 19.

WEST ISLIP, San Pedro for Honolulu, 2076 miles from San Pedro May 19.

FREED BAXTER, Kahului for Port Townsend, 538 miles from Kahului May 19.

PANAMA, Philadelphia for San Pedro, 1117 miles south of San Pedro, noon May 19.

STEELE VOYAGER, San Pedro for New York, 585 miles south of San Pedro, noon May 19.

H. M. STOREY, San Francisco for London, 1000 miles south of San Pedro May 19.

MEXICO, San Jose del Cabo for Matanzas, 1000 miles south of San Pedro May 19.

GOLDEN STATE, Hongkong for San Francisco, 2016 miles west of San Francisco May 19.

ADMIRAL FARRAGUT, Wilmington for San Francisco, 253 miles from San Francisco May 19.

TACOMA FEELS EIGHT WON

COMMITTEE TO PRESENT RATE CASE BEFORE BOARD.

Information From Agent Indicates Independent Service Can Be Obtained Easily.

TACOMA, Wash., May 20.—(Special.)—Without relaxing their vigilance or taking too much for granted, Tacoma shippers gathered at the meeting called by the traffic and transportation bureau of the Tacoma Commercial club, were encouraged to feel that they have virtually won the fight against the tariff of terminal rates from the port of Tacoma.

The order suspending the differential in rates between Tacoma and the United States shipping board to the Atlantic intercoastal conference was the result of the order, worded before the shipping board, to come later, Tacoma will get her due, according to predictions from the east.

While the need for Tacoma shippers pooling their cargoes to some line without the conference is removed for the time at least, the tariff of terminal rates from the port of Tacoma is still a matter of concern.

The meeting of Tacoma shippers authorized the traffic and transportation bureau to organize a special advisory and finance committee to assist the managing board of the steamer in preparing for the hearing before the United States shipping board.

Pacific Coast Shipping Notes.

ASTORIA, Or., May 20.—(Special.)—The steamer Estrella, with freight from Portland, sailed at 3:30 this morning for San Diego.

The motorship Kennecott arrived at 3 o'clock this morning from San Francisco and will take freight at Portland and Astoria for New York.

The steamer Meriden, with freight from Puget sound and Portland, sailed at 9:05 this morning for Liverpool via San Francisco.

A wireless message received by the Columbia River Packers' association says the ship St. Nicholas arrived safely yesterday at Nushagak river, Alaska.

The steamer Meriden, with freight from Puget sound and Portland, sailed at 9:05 this morning for Liverpool via San Francisco.

The steamer Meriden, with freight from Puget sound and Portland, sailed at 9:05 this morning for Liverpool via San Francisco.

The steamer Meriden, with freight from Puget sound and Portland, sailed at 9:05 this morning for Liverpool via San Francisco.

The steamer Meriden, with freight from Puget sound and Portland, sailed at 9:05 this morning for Liverpool via San Francisco.

The steamer Meriden, with freight from Puget sound and Portland, sailed at 9:05 this morning for Liverpool via San Francisco.

The steamer Meriden, with freight from Puget sound and Portland, sailed at 9:05 this morning for Liverpool via San Francisco.

THE BILT-WELL

UPON REQUEST BY PHONE, MAIL OR IN PERSON

THOSE who long for a home and prospective home builders, will find in this little booklet many things of interest. The following extract conveys only a faint idea of its character.

"There are thousands of people who with limited means hesitate to venture in home building but who could with skillful management acquire their own homes by the most economical method, namely, by building, if they would but decide to do so.

This company is not concerned solely in furnishing the lumber, lath, shingles, doors, moldings, etc., but is first, last and always interested in the proper servicing of its customers; that is, we want to help you from start to finish in every possible way; we want to give you exactly what you should have for your purpose, exactly when you want it, exactly at what you can afford to pay and make good on the claims we make for all that is meant by

OREGON DOOR COMPANY Sash, Doors, Glass Frames and Sanded Finish. Phone Sellwood 62 Foot of Spokane Avenue, Portland

EAST SIDE BOX COMPANY Boxes and Box Shooks. Sellwood 597 Foot of Spokane Avenue, Portland

East Side Mill & Lumber Company LUMBER—LATH—SHINGLES—MOULDINGS "Build It With Lumber." SELLWOOD 597 PORTLAND, OREGON

MORE STEEL BROUGHT IN MATERIAL FOR ELKS' HOME COMING BY WATER.

Several Consignments Already Unloaded by Steamers From Atlantic and More Coming.

Structural steel for the new home of Portland Elks is forming parts of cargoes reaching the city of late from the east, the last consignment being aboard the steamer Selma City.

Ship to Be Remembered.

VANCOUVER, Wash., May 20.—(Special.)—The name of the wooden ship Kineo, the first ship launched by the G. M. Standifer Construction corporation in this city, in 1918, has been received by A. L. Miller.

Report From Mouth of Columbia.

SEATTLE, Wash., May 20.—Arrangements were made today by the Pacific Steamship company for handling the cargo of the motorship Kennecott, wrecked on the south spit at Marshfield, Or., was to be taken to Seattle.

SEATTLE, Wash., May 20.—What is declared to be the largest silk shipment of the year is due here June 4 on the steamer Yonaka, which is bringing 4922 bales, valued at \$5,000,000.

COOS BAY, Or., May 20.—(Special.)—The steamer C. A. Smith sailed this morning with a lumber cargo for Bay Point. The tug Pacific is this morning en route to sea with the Anne Hanley in tow, bound for San Francisco.

GRAYS HARBOR, Wash., May 20.—(Special.)—The steamer Edna arrived from San Francisco this morning and will load cargo at the E. K. Wood mill, Hopland. The steamer San Jacinto arrived from San Francisco this morning and will load cargo at the E. K. Wood mill, Hopland.

SAFETSA (Pink Epsom Salts) Pink color avoids danger of mistaking poisons for Epsom Salts. Guaranteed absolutely pure. Prepared by Saftisal Co. Portland, Or.

ARE YOU GOING TO BUILD? THEN PHONE THE BILT-WELL COMPANY GENERAL CONTRACTORS

When you are ready to build, you want service—prompt service—and that's what we are here to give you. We build everything from a small cottage to a skyscraper and guarantee you will be satisfied with the completed work.

"Saftisa" (Pink Epsom Salts) Pink color avoids danger of mistaking poisons for Epsom Salts. Guaranteed absolutely pure.

REBUILDING and Repair Work

We operate a maintenance department which is equipped for all kinds of building repair work.

Garages Built, Porches Rebuilt, Roofs Repaired, Brick and Stone Work Reputated, Sleeping Porches Installed, New Floors Laid, WE LAY CEMENT DRIVEWAYS.

East 4646 500 East Lincoln, Corner Tenth



Why and How to Build a Home

There are thousands of people who with limited means hesitate to venture in home building but who could with skillful management acquire their own homes by the most economical method, namely, by building, if they would but decide to do so.

This company is not concerned solely in furnishing the lumber, lath, shingles, doors, moldings, etc., but is first, last and always interested in the proper servicing of its customers; that is, we want to help you from start to finish in every possible way; we want to give you exactly what you should have for your purpose, exactly when you want it, exactly at what you can afford to pay and make good on the claims we make for all that is meant by

OREGON DOOR COMPANY Sash, Doors, Glass Frames and Sanded Finish. Phone Sellwood 62 Foot of Spokane Avenue, Portland

EAST SIDE BOX COMPANY Boxes and Box Shooks. Sellwood 597 Foot of Spokane Avenue, Portland

East Side Mill & Lumber Company LUMBER—LATH—SHINGLES—MOULDINGS "Build It With Lumber." SELLWOOD 597 PORTLAND, OREGON

MORE STEEL BROUGHT IN MATERIAL FOR ELKS' HOME COMING BY WATER.

Several Consignments Already Unloaded by Steamers From Atlantic and More Coming.

Structural steel for the new home of Portland Elks is forming parts of cargoes reaching the city of late from the east, the last consignment being aboard the steamer Selma City.

Ship to Be Remembered.

VANCOUVER, Wash., May 20.—(Special.)—The name of the wooden ship Kineo, the first ship launched by the G. M. Standifer Construction corporation in this city, in 1918, has been received by A. L. Miller.

Report From Mouth of Columbia.

SEATTLE, Wash., May 20.—Arrangements were made today by the Pacific Steamship company for handling the cargo of the motorship Kennecott, wrecked on the south spit at Marshfield, Or., was to be taken to Seattle.

SEATTLE, Wash., May 20.—What is declared to be the largest silk shipment of the year is due here June 4 on the steamer Yonaka, which is bringing 4922 bales, valued at \$5,000,000.

COOS BAY, Or., May 20.—(Special.)—The steamer C. A. Smith sailed this morning with a lumber cargo for Bay Point. The tug Pacific is this morning en route to sea with the Anne Hanley in tow, bound for San Francisco.

GRAYS HARBOR, Wash., May 20.—(Special.)—The steamer Edna arrived from San Francisco this morning and will load cargo at the E. K. Wood mill, Hopland. The steamer San Jacinto arrived from San Francisco this morning and will load cargo at the E. K. Wood mill, Hopland.

SAFETSA (Pink Epsom Salts) Pink color avoids danger of mistaking poisons for Epsom Salts. Guaranteed absolutely pure. Prepared by Saftisal Co. Portland, Or.