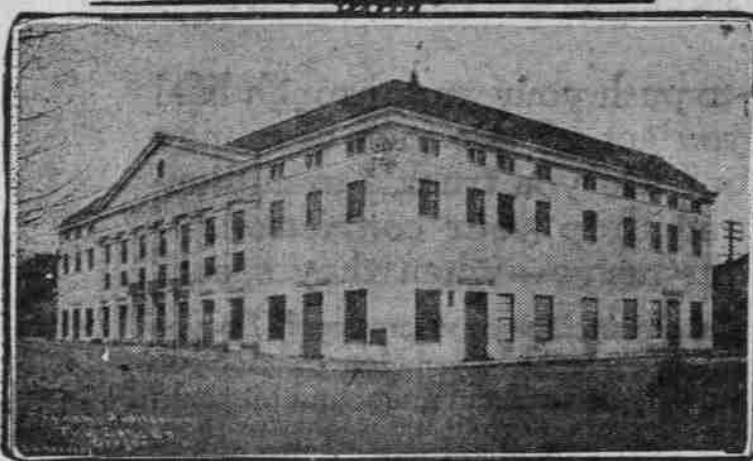


OLD WASCO COUNTY PIONEERS FORM UNIQUE ORGANIZATION

Association to Promote Old-time Friendship and Seek Preservation of Historic Spots in Eastern Oregon.



New Auditorium at The Dalles



Old Fort Dalles Historical Museum

BY RUTH ELIZABETH SHELDON.

THE DALLES, Or., May 6.—(Special.)—The 75th anniversary of Founders' day, May 2, witnessed the birth of a unique organization at The Dalles to be known as the Old Wasco County Pioneers' association.

The call was issued by Mrs. Lulu D. Crandall at the request of the Old Fort Dalles Historical society to those residents of Wasco county from January 11, 1854 to 1882, when the ties of the first railroad across the continent were laid to Portland.

Old Fort Dalles, then a primitive postoffice called "Wascoman," an Indian name meaning "basin containing a spring," was the end of the "Oregon trail" and the county seat of what was undoubtedly the largest county ever known in history.

Wasco county then embraced all of eastern Oregon territory south of the 46th parallel from the summit of the Cascade range to the summit of the Rocky mountains, or nearly twice the amount of territory that now comprises Oregon, its area being 130,000 square miles. It contained most of Idaho and a section of Wyoming larger than the present state of Connecticut. One of the first recorded transactions of the board of county commissioners was "to grant a license to C. C. Irwin to keep a ferry on Green River, 80 miles above the Utah line." That point was about 100 miles from the county seat and 50 miles east of the present boundary between Idaho and Wyoming.

The region covered more ground than an empire of Europe—more than that of the British Isles, Italy or Austria, so that its appellation of "inland empire" is altogether appropriate. It was at one time claimed by five different nations: Spain, England, Russia, France and our own United States.

Our gratitude is due those martyr missionaries, Jason Lee and Dr. Marcus Whitman, and these pioneer men and women, who still survive and are banding together as the Old Wasco County Pioneers' association, for the privilege of erecting the stars and stripes over this rich and beautiful section today. From this nucleus of settlement a vast and magnificent empire, feeding a large portion of the world with its wheat, fruit, poultry, sheep and cattle, has sprung from barren hill and arid plain.

It has been stated that the epic of the west, the march of these pioneers into the wilderness to cleave out homes for themselves and their children, could be written into as stirring a recital as that of the "Iliad" of the "Odyssey." It might prove a worthy second to Moses' exodus into the promised land.

They have seen picturesque stern-wheel steamboats take the place of bobbing bateaus of returning fur traders, which in turn have given precedence to great trans-continental trunk lines along the Columbia, while the intersecting canyons of the tablelands echo no more to tinkling bells of many-horse teaming outfits, but resound to the "swank, swanking" of private motor cars.

They are still hale and hearty, these grand old people and their meeting was conducted with interest and enthusiasm. A "peppy" speech was made by R. D. Hood, their oldest member, a youth of 93, whose birthday, September 19, next, will be the occasion of a monster cake baking on the part of the society.

Another "live wire" was Judge M. C. George of Portland, whose statement that when he arrived at The Dalles in 1851 he was "principally in the

inspiration toward a preservation in such form of historic spots in eastern Oregon that the present and future generations, journeying peacefully along the highways of the west, may pause a moment in recognition of the fact that they are historic, and that they became so through the courage, the sacrifice, the very heart's blood of their ancestors, for them.

VOTING HELD IMPORTANT
Reed Professor and Candidates Are Heard at Civic League.

The importance of the primary election in Oregon and the need for more of the voters to realize this and to cast their ballots at that time were emphasized by Professor Charles McKinley of Reed college in an address at the luncheon of the Civic League at the Benson hotel yesterday.

Will Purdy, democratic candidate for governor, and John H. Stevenson and Herbert Gordon, candidates for positions in the legislature, spoke at the luncheon, in support of James Crawford, speaker of the house, and State Treasurer Hoff.

Clear and true came the notes of "America," "Old Lang Syne," and "Out Where the West Begins," while the pledge to the flag was thrilling in its beautiful solemnity and significance.

The initial enrollment consisted of 225 members and May 2 was chosen as the date for their yearly meeting. By unanimous consent the following prominent Dalles people were elected officers: Judge Fred Wilson, president; Mrs. Benton Mays, vice-president; R. E. Williams, secretary-treasurer, and Mrs. Lulu D. Crandall, historian.

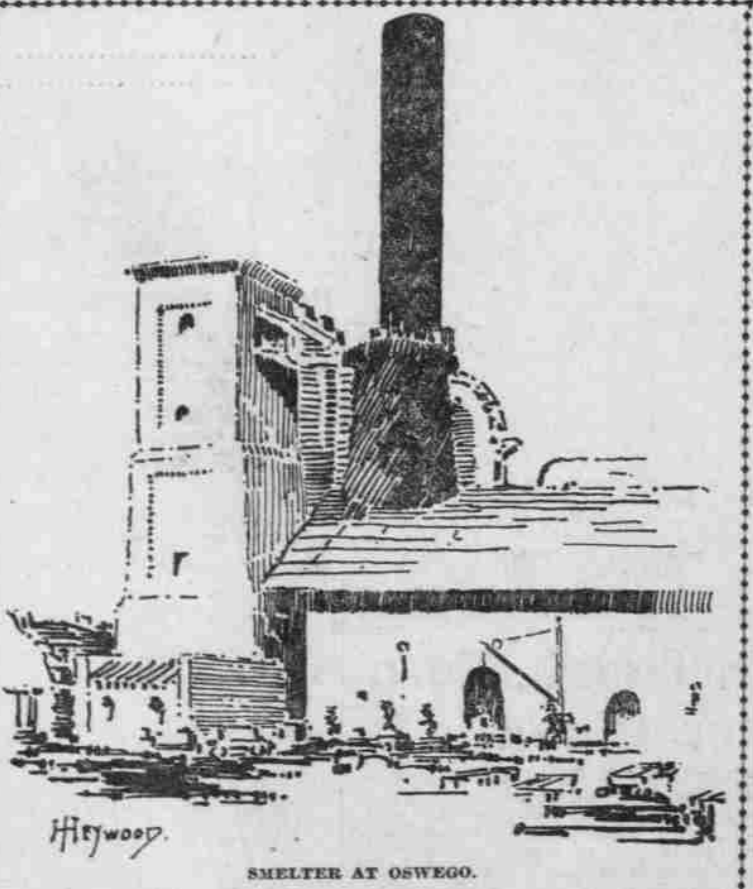
The purpose of the association will be to restore as much as possible the friendship and hospitality of bygone days, and to lend its influence and

collage, it seems strange that this huge factory with its towering stacks now cold and smokeless, fits so well into the landscape.

The industrial life of any community, being its real supporting force, has many appealing moods. Not the least of these appeals is that to the eye, for few persons fail to get some interior response at the sight of a huge building and its accompanying surroundings. The great masses of man-made masonry, standing cliff-like in the midst of a plain, conjure up thoughts of might and strength. The spirit of the thing might be described as elevating, for it all goes to prove a little of what mere man can accomplish.

TOWERING SMELTING PLANT FITS WELL INTO LANDSCAPE

Sight Worthy of Second Look Seen on Trip to Oswego Where Great Factory Nestles in Natural Park.



SMELTER AT OSWEGO.

MANY persons cannot see any attractive features about a factory or manufacturing plant, but the sheer rugged lines of these structures often present a slight worth the second glance. The eye will become satiated with too steady a diet of the same kind of scenery, and for that reason, if for no other, the occasional building or strong sight that draws the vision from green scenery is the more notable.

One of the sights of the trip from Portland up the Willamette river is the great smelting plant, now in disuse, at Oswego. Nestling in a natural park, the background all feathery

stage service improved

STRICT STATE LEGISLATION BRINGS BETTERMENTS.
Both Passenger and Freight Lines in Washington and Public Road Benefits of Control.

OLYMPIA, Wash., May 6.—(Special.)—Strict enforcement of the rules of the department of public works governing the service given by automobile stage lines is resulting in the rapid betterment of the facilities of these lines, it is shown by reports to the department. The betterments affect both passenger and freight service.

Approximately 170 stage lines are now operating in the carriage of passengers and express, under certificates issued by the department, while about 100 certificates for freight

service have been issued. Passenger certificates shortly will pass the 400 mark at the present rate of issuance. The passenger concerns now operating are using 229 cars of eight-passenger or less capacity, 72 cars holding from 8 to 12 passengers, 178 from 13 to 20 passengers, with 23 cars having room for more than 20 persons, making a total of 602 licensed cars in operation on fixed runs and regular schedules.

In the freight service there are 26 trucks with a capacity of three tons or less, 44 that carry 4½ or 5 tons, and 11 equipped to haul from 5½ to 7 ton loads, a total of 185 licensed trucks operated on specified routes.

Twenty certificates also have been issued for a combined passenger and freight service, the cars engaged in this traffic usually being light trucks with accommodations for one or more passengers, and operated in sparsely settled districts.

Reports to the department further indicate that many stage lines are building even better equipment than any offered thus far. All licensed vehicles are required to carry bonds protecting life and property from damage.

STAGE SERVICE IMPROVED

STRICT STATE LEGISLATION BRINGS BETTERMENTS.
Both Passenger and Freight Lines in Washington and Public Road Benefits of Control.

VOTING HELD IMPORTANT

Reed Professor and Candidates Are Heard at Civic League.

The importance of the primary election in Oregon and the need for more of the voters to realize this and to cast their ballots at that time were emphasized by Professor Charles McKinley of Reed college in an address at the luncheon of the Civic League at the Benson hotel yesterday.

Will Purdy, democratic candidate for governor, and John H. Stevenson and Herbert Gordon, candidates for positions in the legislature, spoke at the luncheon, in support of James Crawford, speaker of the house, and State Treasurer Hoff.

STAGE SERVICE IMPROVED

STRICT STATE LEGISLATION BRINGS BETTERMENTS.
Both Passenger and Freight Lines in Washington and Public Road Benefits of Control.

VOTING HELD IMPORTANT

Reed Professor and Candidates Are Heard at Civic League.

The importance of the primary election in Oregon and the need for more of the voters to realize this and to cast their ballots at that time were emphasized by Professor Charles McKinley of Reed college in an address at the luncheon of the Civic League at the Benson hotel yesterday.

Will Purdy, democratic candidate for governor, and John H. Stevenson and Herbert Gordon, candidates for positions in the legislature, spoke at the luncheon, in support of James Crawford, speaker of the house, and State Treasurer Hoff.

service have been issued. Passenger certificates shortly will pass the 400 mark at the present rate of issuance. The passenger concerns now operating are using 229 cars of eight-passenger or less capacity, 72 cars holding from 8 to 12 passengers, 178 from 13 to 20 passengers, with 23 cars having room for more than 20 persons, making a total of 602 licensed cars in operation on fixed runs and regular schedules.

In the freight service there are 26 trucks with a capacity of three tons or less, 44 that carry 4½ or 5 tons, and 11 equipped to haul from 5½ to 7 ton loads, a total of 185 licensed trucks operated on specified routes.

Twenty certificates also have been issued for a combined passenger and freight service, the cars engaged in this traffic usually being light trucks with accommodations for one or more passengers, and operated in sparsely settled districts.

Reports to the department further indicate that many stage lines are building even better equipment than any offered thus far. All licensed vehicles are required to carry bonds protecting life and property from damage.

LOGGERS MEET MAY 22

ODDFELLOWS' CONVENTION TO BE HELD IN EUGENE.
Meetings of Grand Lodge, Grand Encampment and Rebekah Assembly Scheduled for Week.

The annual convention of the Oddfellows' grand lodge, grand encampment and Rebekah assembly of Oregon will be held in Eugene May 22, 23, 24, 25 and 26, and will be attended by more than 1000 delegates and guests from all over the state, according to statements made at Oddfellows' headquarters yesterday.

Six different buildings in Eugene will be used for the various meetings of the three orders during the week. The first general meeting will open in Oddfellows' hall at 10 A. M. Monday, May 22. The chief meeting place for

the convention will be in the national guard armory. Thursday afternoon, May 25, is the time set for the grand parade of drill teams from all over the state, and about 2000 uniformed men and women, including four bands, will take part. Two other parades will also be features of the week. On Wednesday night the Muscovites will hold their parade and the Orientals will stage their uniformed attraction Thursday night.

The main reception will be on Tuesday night and will be open only to members of the grand lodge, grand encampment and Rebekah assembly. Admission will be by ticket. M. H. Biggs of Prineville, grand master, will preside over the meetings of the grand lodge. Kerwin J. Nolan of Portland, grand patriarch, will be in charge of grand encampment meetings and Nettie M. Whitstone of Pendleton, as president of the Rebekah, will preside at their meetings.

Slam is one of the few monarchies of the tropics.

Read The Oregonian classified ads.



BEST BY TEST

CALUMET BAKING POWDER

You Save
Materials it is used with
Never fails No waste

You Save
When You Use it
More than ordinary leavening strength
Therefore you use less

You Save
When You Buy it
Moderate Price

A pound can of Calumet contains full 16 oz. Some baking powders come in 12 oz. cans instead of 16 oz. cans. Be sure you get a pound when you want it.



ALWAYS MAKES MOST PALATABLE AND SWEETEST OF FOODS