

NEW OIL CARRIER WILL FILL HER TANKS WITH WHEAT FOR EUROPE.

Col. E. L. Drake Sails Under Sealed Orders.

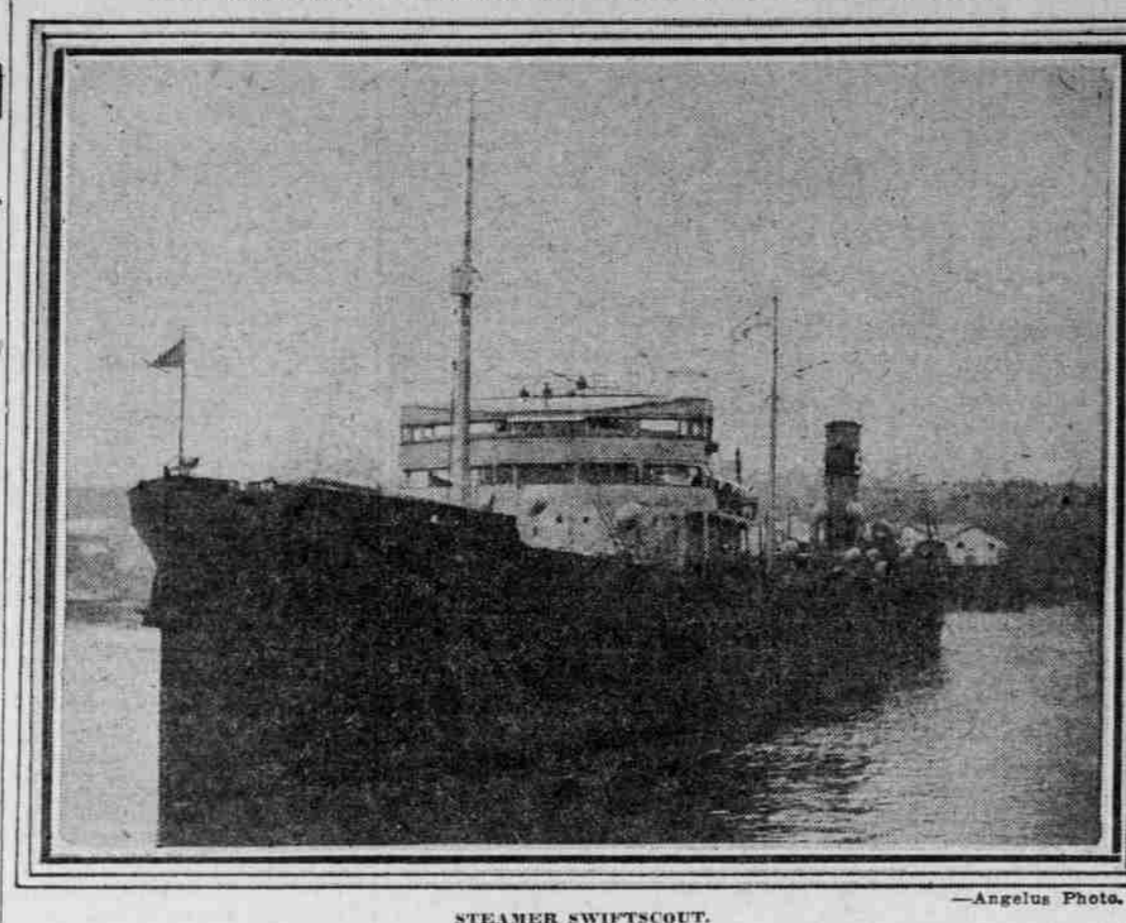
FULL CARGO IS CARRIED

W. S. Miller Due to Arrive in Portland May 20 to Discharge 40,000 Barrels of Gasoline.

Moving with all the stealth and secrecy of a blockade runner in war time, the Standard Oil company's tank steamer Col. E. L. Drake slipped into the Columbia river yesterday morning and docked at the Standard Oil plant at 7 o'clock last night with a full cargo of fuel oil. Because of the seriousness of the tie-up at San Francisco resulting from the marine workers' strike and the desire of the company to avoid disorder at the port of destination, the Col. E. L. Drake was sent out of San Francisco under sealed orders, and her destination was known only to her operators and the few persons taken into the confidence of the Standard Oil company.

Arrival First in Week. This tanker is the first coastwise vessel to come here in more than a week. Practically all of the vessels operating in the Pacific coastwise traffic have been tied up at their home ports since the strike of the steamship men and officers. The majority of the fleet of tankers, the Swiftcours and Swiftcoats were tied up here after they were completed because there was not enough activity in the foreign oil trade to justify their operation.

Interest of the water front is centered upon the loading of the tanker they were completed because these design for such an entirely different purpose.



—Angelus Photo.

One of the most widely-discussed developments on the Portland water front during the past week was the charter of the 12,000-ton tank steamer Swiftcours to take a full cargo of about 10,000 tons of wheat to Europe for the Northern Grain & Warehouse company. The Swiftcours is one of the seven big tankers built by the Northwest Bridge & Iron company of this city for the Swiftcours Oil Transport company of New York. Two of these tankers—the Swiftcours and Swiftcoats—were tied up here after they were completed because there was not enough activity in the foreign oil trade to justify their operation.

The interest of the water front is centered upon the loading of the tanker they were completed because these design for such an entirely different purpose.

STEAMER SWIFTCOURS.

One of the most widely-discussed developments on the Portland water front during the past week was the charter of the 12,000-ton tank steamer Swiftcours to take a full cargo of about 10,000 tons of wheat to Europe for the Northern Grain & Warehouse company. The Swiftcours is one of the seven big tankers built by the Northwest Bridge & Iron company of this city for the Swiftcours Oil Transport company of New York. Two of these tankers—the Swiftcours and Swiftcoats—were tied up here after they were completed because there was not enough activity in the foreign oil trade to justify their operation.

FRUIT SHIPMENTS TESTED

STEAMER EQUIPPED AS EXPERIMENTAL LABORATORY. Cargo Space Divided into Compartments in Which Different Conditions Can Be Controlled.

WASHINGTON, D. C., May 14.—The steamer Charles H. Cramp is being equipped by the Atlantic, Gulf and Pacific Steamship company for use as a practical laboratory for experiment with the shipment of citrus fruits and vegetables from the Pacific coast through the Panama canal to eastern markets. The plan is being worked out in co-operation with the preservation of fruit and vegetable project of the federal bureau of markets.

STRIKE HOLDS VESSELS

STEAMER WILLAMETTE STAYS AT ST. HELENS DOCK. West Nivaria Will Finish Loading for Orient and Officers Say Will Sail on Schedule Tomorrow.

The Columbia river experienced its first tie-up of a privately owned vessel since the strike of the steamship men and officers. The steamer West Nivaria, owned by the McCormick Lumber company, yesterday was held at St. Helens by the strike of the men and officers.

MOVEMENTS OF VESSELS.

PORTLAND, May 14.—Arrived at 10:30 A. M., steamer Arizaga, from Portland. Arrived at 11:30 A. M., steamer Col. E. L. Drake, from San Francisco. Arrived at 12:30 P. M., steamer Arizaga, from Portland.

REFUGEES PUT TO WORK

Famine Suffers in China Will Make Efforts for Harvest. NEW YORK.—Hundreds of thousands of famine sufferers who are concentrated in refugee camps in China during the winter have been compelled by authorities to return to their home provinces and attempt raising new crops this year.

RUSSIAN COLONEL NURSE

Handsome Cossack Refugee Becomes Domestic in Greece. ATHENS.—Russian officers formerly of General Wrangel's army, who were brought to Greece when the king evacuated and who have found it impossible to secure other employment, have turned their hands to domestic and household duties.

VENIZELOS NOW IN EXILE

Greek Statesman, Discredited, Living in Principality of Monaco. NICE.—Eleftherios Venizelos, the Greek statesman, who left Greece after his political downfall and the recall of King Constantine, has chosen as his place of exile for the present a modest hotel in the principality of Monaco near the French frontier.

DAILY CITY STATISTICS

Table with multiple columns listing various statistics such as Births, Deaths, Marriages, and other city data.

Table with multiple columns listing various statistics such as Births, Deaths, Marriages, and other city data.

Acceptance of Reparation Terms Promising.

WAY FOR TRADE OPENED

Main Problem Solved, Development Is Expected to Begin—U. S. Business Still Drags.

BY STUART P. WEST. (Copyright by The Oregonian.) NEW YORK, May 14.—(Special.) The broad view of Germany's acceptance of the reparation terms is that it prepares the way for her re-entrance into the commercial league of nations and as such is an accomplishment of great significance to the trade future of the world.

VLADIVOSTOK SHY OF COIN

Residents Have Clothes and Plenty to Eat, but No Money.

TOKIO.—Residents of Vladivostok have plenty to eat and plenty of clothes but no money, according to a correspondent of the Kokusai News agency who has just returned from that city.

SHORTS CONTROL MARKET

STOCKS ARE SOLD DOWN 1 TO NEARLY 5 POINTS.

Trading Chiefly in Oils, Motors, Steels and Marines; Bond Operations Light and Narrow.

NEW YORK, May 14.—The two-hour session of the stock market today was uneventful by further pressure from the markets that fact that the market was in the absence of more tentative trading.

Men Wanted!

Licensed Officers and Engineers

Also Men for Our Merchant Marine

Efficient marine men who stand by Shipping Board vessels and those accepting employment will be accorded every consideration in the future.

Wage Scale for 8000-Ton Steamer

Table listing wages for various positions on an 8000-ton steamer, including Master, Chief Engineer, Fireman, etc.

SEA SERVICE BUREAU

U. S. SHIPPING BOARD

Room 205 Concord Bldg., 2d and Stark Sts., Portland.