

DAUNTLESS MARK OF MIDDLE AGES FOUND IN THIS CENTURY

Eighty Million Lutherans Throughout World Will Celebrate 400th Anniversary of Martin Luther's Arrangement Before the Diet at Worms April 17.

NEW YORK, March 12.—Eighty millions of Lutherans and innumerable other Protestants, it has been announced by the National Lutheran council, will participate in a world-wide celebration April 17 of the 400th anniversary of the arraignment of Martin Luther before the diet at Worms.

When Luther nailed his 95 theses upon the door of the University of Wittenberg and refused to recede, he dared to be the only willful rebel of faith and practice and closed his defiance with the words: "There I stand, I can do no other." Amen.

The main purpose of the celebration, it is stated, is to obtain a clearer understanding of how Lutherans and other Christians throughout the world may become more effective in bringing God's will to bear powerfully upon the present happy world conditions.

A message from the council, addressed to the Lutheran churches, recommended the quinquagesimal assembly as a fitting time to review the benefits inherited from Luther's unshakable stance at the trial before which Luther appeared as the most imposing assemblage of church and state potentates.

The Luther topic for tonight at 8 o'clock at the Independent Bible Episcopalian society and church, 41 East Twelfth street, corner Sherman, will be "The Continuation of the Anabaptist Age." The success and health class meets Tuesday at 8 o'clock. The public evening service is Thursday, 8 P. M. Women's meeting is Friday, 2:30 P. M. Revs. J. C. and Ida M. Schori are the pastors.

W. W. Aber, pastor of the First Church of Psychic Science, which is located at Eleventh and Alder streets, will give a lecture today at 8 P. M. on the subject "What is Hysteria?" followed by messages. Mrs. Goulie will assist in giving an inspirational lecture. Everybody is welcome.

This will be the closing day of the revival convention being conducted by the First Nazarene church in the Methodist church South, corner Multnomah street and Union avenue. Three services will be held, at 11 o'clock, 7:30 and 9:30 P. M. The coast-to-coast evangelistic party, consisting of Bud Robinson of Pasadena, known as the walking Bible; Rev. C. W. Ruth assisted by Rev. E. P. C. author; Professor Kenneth Wells, organist and chorus director; Mrs. Eunice Wells, pianist, will have charge of the service. The pastor, Rev. Alvin M. Brown, the singing will be a special feature and the song book used for the auditorium revival will be used.

At the New Christian (Swedenborgian) assembly room, Hotel Portland, Rev. William R. Reece will speak on "The Way of the Cross in the World." A class formed for the study of the Bible as a psychological symbol of man's inner life will hold its first meeting following the morning service.



Three prominent figures in the church news of the week: Left to right—L. W. Rogers of Chicago, national president of the Theosophical society, who made a series of addresses before the Portland branch of the society during his visit here; Father Francis P. Leipzig, called from St. Paul, Minn., to officiate at the noon Lenten services starting tomorrow under the Brotherhood of St. Andrew and of the Episcopal church.

Congregationalists to Hold Outdoor Revival. Dr. McElveen of First Church Announces Special Service.

A SERIES of outdoor evangelistic services will be conducted by the young people of the First Congregational church Sunday evenings. Such a large crowd attended the dedicatory service of the new electric sign last Sunday evening and the arcade of the church so splendidly lit itself to an outdoor service that Dr. McElveen has planned to hold a 15-minute outdoor service every Sunday evening from 7:30 to 7:45.

Life's Topics Discussed by Dr. Hinson. Sermons Today Deal With Important Things of This World.

Lenten Services Held at Trinity Lutheran Church. "Three Last Words From the Cross" Topic of Evening Sermon.

Christian Churches Preach to Sick Today. Special Effort Will Be Made to Reach Invalid Persons.

Churches Preach to Sick Today. Special Effort Will Be Made to Reach Invalid Persons.



Three prominent figures in the church news of the week: Left to right—L. W. Rogers of Chicago, national president of the Theosophical society, who made a series of addresses before the Portland branch of the society during his visit here; Father Francis P. Leipzig, called from St. Paul, Minn., to officiate at the noon Lenten services starting tomorrow under the Brotherhood of St. Andrew and of the Episcopal church.

Churches Preach to Sick Today. Special Effort Will Be Made to Reach Invalid Persons.

Churches Preach to Sick Today. Special Effort Will Be Made to Reach Invalid Persons.

Churches Preach to Sick Today. Special Effort Will Be Made to Reach Invalid Persons.

Churches Preach to Sick Today. Special Effort Will Be Made to Reach Invalid Persons.

Churches Preach to Sick Today. Special Effort Will Be Made to Reach Invalid Persons.

Churches Preach to Sick Today. Special Effort Will Be Made to Reach Invalid Persons.



Three prominent figures in the church news of the week: Left to right—L. W. Rogers of Chicago, national president of the Theosophical society, who made a series of addresses before the Portland branch of the society during his visit here; Father Francis P. Leipzig, called from St. Paul, Minn., to officiate at the noon Lenten services starting tomorrow under the Brotherhood of St. Andrew and of the Episcopal church.

Churches Preach to Sick Today. Special Effort Will Be Made to Reach Invalid Persons.

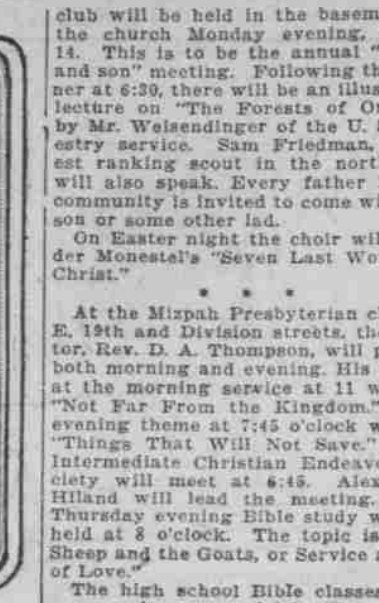
Churches Preach to Sick Today. Special Effort Will Be Made to Reach Invalid Persons.

Churches Preach to Sick Today. Special Effort Will Be Made to Reach Invalid Persons.

Churches Preach to Sick Today. Special Effort Will Be Made to Reach Invalid Persons.

Churches Preach to Sick Today. Special Effort Will Be Made to Reach Invalid Persons.

Churches Preach to Sick Today. Special Effort Will Be Made to Reach Invalid Persons.



Three prominent figures in the church news of the week: Left to right—L. W. Rogers of Chicago, national president of the Theosophical society, who made a series of addresses before the Portland branch of the society during his visit here; Father Francis P. Leipzig, called from St. Paul, Minn., to officiate at the noon Lenten services starting tomorrow under the Brotherhood of St. Andrew and of the Episcopal church.

Churches Preach to Sick Today. Special Effort Will Be Made to Reach Invalid Persons.

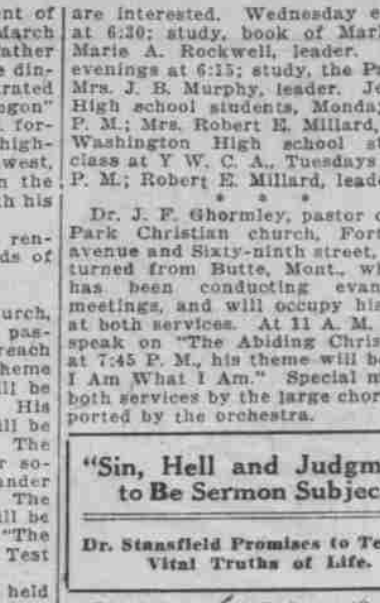
Churches Preach to Sick Today. Special Effort Will Be Made to Reach Invalid Persons.

Churches Preach to Sick Today. Special Effort Will Be Made to Reach Invalid Persons.

Churches Preach to Sick Today. Special Effort Will Be Made to Reach Invalid Persons.

Churches Preach to Sick Today. Special Effort Will Be Made to Reach Invalid Persons.

Churches Preach to Sick Today. Special Effort Will Be Made to Reach Invalid Persons.



Three prominent figures in the church news of the week: Left to right—L. W. Rogers of Chicago, national president of the Theosophical society, who made a series of addresses before the Portland branch of the society during his visit here; Father Francis P. Leipzig, called from St. Paul, Minn., to officiate at the noon Lenten services starting tomorrow under the Brotherhood of St. Andrew and of the Episcopal church.

Churches Preach to Sick Today. Special Effort Will Be Made to Reach Invalid Persons.

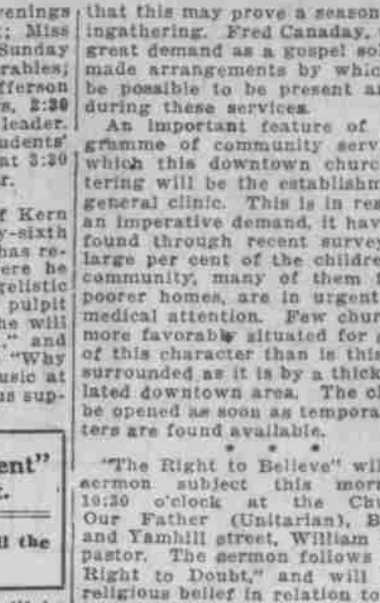
Churches Preach to Sick Today. Special Effort Will Be Made to Reach Invalid Persons.

Churches Preach to Sick Today. Special Effort Will Be Made to Reach Invalid Persons.

Churches Preach to Sick Today. Special Effort Will Be Made to Reach Invalid Persons.

Churches Preach to Sick Today. Special Effort Will Be Made to Reach Invalid Persons.

Churches Preach to Sick Today. Special Effort Will Be Made to Reach Invalid Persons.



Three prominent figures in the church news of the week: Left to right—L. W. Rogers of Chicago, national president of the Theosophical society, who made a series of addresses before the Portland branch of the society during his visit here; Father Francis P. Leipzig, called from St. Paul, Minn., to officiate at the noon Lenten services starting tomorrow under the Brotherhood of St. Andrew and of the Episcopal church.

Churches Preach to Sick Today. Special Effort Will Be Made to Reach Invalid Persons.

Churches Preach to Sick Today. Special Effort Will Be Made to Reach Invalid Persons.

Churches Preach to Sick Today. Special Effort Will Be Made to Reach Invalid Persons.

Churches Preach to Sick Today. Special Effort Will Be Made to Reach Invalid Persons.

Churches Preach to Sick Today. Special Effort Will Be Made to Reach Invalid Persons.

Churches Preach to Sick Today. Special Effort Will Be Made to Reach Invalid Persons.

that may prove a season of large inquiry. Fred Canada, who is in charge of the arrangement, is confident that the service will be possible to be present and assist during these services. An important feature of the programme of musical service upon which this downtown church is entering will be the establishment of a "Lenten choir" in response to an imperative demand. It having been found through recent survey that a large per cent of the children of the community, many of them from the poorer homes, are in urgent need of medical attention. Few churches are more favorably situated for a service of this character than is this church, surrounded as it is by a thickly populated downtown area. The clinic will be opened as soon as temporary quarters are found available.

that may prove a season of large inquiry. Fred Canada, who is in charge of the arrangement, is confident that the service will be possible to be present and assist during these services. An important feature of the programme of musical service upon which this downtown church is entering will be the establishment of a "Lenten choir" in response to an imperative demand. It having been found through recent survey that a large per cent of the children of the community, many of them from the poorer homes, are in urgent need of medical attention. Few churches are more favorably situated for a service of this character than is this church, surrounded as it is by a thickly populated downtown area. The clinic will be opened as soon as temporary quarters are found available.

that may prove a season of large inquiry. Fred Canada, who is in charge of the arrangement, is confident that the service will be possible to be present and assist during these services. An important feature of the programme of musical service upon which this downtown church is entering will be the establishment of a "Lenten choir" in response to an imperative demand. It having been found through recent survey that a large per cent of the children of the community, many of them from the poorer homes, are in urgent need of medical attention. Few churches are more favorably situated for a service of this character than is this church, surrounded as it is by a thickly populated downtown area. The clinic will be opened as soon as temporary quarters are found available.

that may prove a season of large inquiry. Fred Canada, who is in charge of the arrangement, is confident that the service will be possible to be present and assist during these services. An important feature of the programme of musical service upon which this downtown church is entering will be the establishment of a "Lenten choir" in response to an imperative demand. It having been found through recent survey that a large per cent of the children of the community, many of them from the poorer homes, are in urgent need of medical attention. Few churches are more favorably situated for a service of this character than is this church, surrounded as it is by a thickly populated downtown area. The clinic will be opened as soon as temporary quarters are found available.

that may prove a season of large inquiry. Fred Canada, who is in charge of the arrangement, is confident that the service will be possible to be present and assist during these services. An important feature of the programme of musical service upon which this downtown church is entering will be the establishment of a "Lenten choir" in response to an imperative demand. It having been found through recent survey that a large per cent of the children of the community, many of them from the poorer homes, are in urgent need of medical attention. Few churches are more favorably situated for a service of this character than is this church, surrounded as it is by a thickly populated downtown area. The clinic will be opened as soon as temporary quarters are found available.

that may prove a season of large inquiry. Fred Canada, who is in charge of the arrangement, is confident that the service will be possible to be present and assist during these services. An important feature of the programme of musical service upon which this downtown church is entering will be the establishment of a "Lenten choir" in response to an imperative demand. It having been found through recent survey that a large per cent of the children of the community, many of them from the poorer homes, are in urgent need of medical attention. Few churches are more favorably situated for a service of this character than is this church, surrounded as it is by a thickly populated downtown area. The clinic will be opened as soon as temporary quarters are found available.

that may prove a season of large inquiry. Fred Canada, who is in charge of the arrangement, is confident that the service will be possible to be present and assist during these services. An important feature of the programme of musical service upon which this downtown church is entering will be the establishment of a "Lenten choir" in response to an imperative demand. It having been found through recent survey that a large per cent of the children of the community, many of them from the poorer homes, are in urgent need of medical attention. Few churches are more favorably situated for a service of this character than is this church, surrounded as it is by a thickly populated downtown area. The clinic will be opened as soon as temporary quarters are found available.

that may prove a season of large inquiry. Fred Canada, who is in charge of the arrangement, is confident that the service will be possible to be present and assist during these services. An important feature of the programme of musical service upon which this downtown church is entering will be the establishment of a "Lenten choir" in response to an imperative demand. It having been found through recent survey that a large per cent of the children of the community, many of them from the poorer homes, are in urgent need of medical attention. Few churches are more favorably situated for a service of this character than is this church, surrounded as it is by a thickly populated downtown area. The clinic will be opened as soon as temporary quarters are found available.

that may prove a season of large inquiry. Fred Canada, who is in charge of the arrangement, is confident that the service will be possible to be present and assist during these services. An important feature of the programme of musical service upon which this downtown church is entering will be the establishment of a "Lenten choir" in response to an imperative demand. It having been found through recent survey that a large per cent of the children of the community, many of them from the poorer homes, are in urgent need of medical attention. Few churches are more favorably situated for a service of this character than is this church, surrounded as it is by a thickly populated downtown area. The clinic will be opened as soon as temporary quarters are found available.

that may prove a season of large inquiry. Fred Canada, who is in charge of the arrangement, is confident that the service will be possible to be present and assist during these services. An important feature of the programme of musical service upon which this downtown church is entering will be the establishment of a "Lenten choir" in response to an imperative demand. It having been found through recent survey that a large per cent of the children of the community, many of them from the poorer homes, are in urgent need of medical attention. Few churches are more favorably situated for a service of this character than is this church, surrounded as it is by a thickly populated downtown area. The clinic will be opened as soon as temporary quarters are found available.