

**VALUABLE COUNTY MAPS ARE FINISHED**

Work of Years Is Completed by Assessor Reed.

**LANDS FULLY CLASSIFIED**

Contour Drawings Show Roads, Railroads, Rivers, Creeks, Lakes and Other Features.

County Assessor Reed has just completed the land classification and contour maps of Multnomah county, which have been under way for more than four years. The maps have been made from official surveys of the United States government. Work upon them was suspended during the war at the request of the government because of the fear that they might be useful to the enemy if they should fall into his hands. Shortly after the armistice was signed, the mapping was resumed and Multnomah county now has as complete a set of maps as can be found in any assessor's office in the country.

The land classification and contour maps are in five large volumes, comprising 421 pages of heavy, durable paper. Full details are shown for each of the 427 full sections and 70 fractional sections in the county. The sections are divided into ten-acre squares and the land classification, which was approved by the state tax commission, given for each square. On level land the contour intervals are 25 feet, and on mountains and hilly land 100 feet.

**All Lands Classified.**  
The land classification shown on the maps follows:

- Cultivated land—Adapted to general farming.
- Building land—Land within or adjacent to a city or town, designated as platted, and showing the names of the additions or plats.
- Fruit land—Land one or more acres of which is planted to fruit.
- Uncleared land—Land covered with brush, second-growth timber or stumps.
- Rough or rocky land—Land not covered with merchantable timber.
- Overflow land—Land covered with water the greater part of the year, but adapted to pasture and crops when the water subsides.
- Timber land—Land covered with merchantable timber.

**Various Features Shown.**  
The maps show, in addition to the land classification and the contour lines, all main roads, railroads, cemeteries, rivers, creeks, lakes, sandbars, marshes, country schoolhouses and suburban car lines.

According to the maps the highest elevation in the county is Buck Point, on the line between Multnomah and Hood River counties. It is 4765 feet above sea level. The highest place west of the Willamette river is on the Rocky Point road, three miles west of the St. Helens road. It is 1550 feet high.

While the maps have a very considerable present value to anyone interested in landed property, their chief worth will come in the future when a soil survey is made of the Multnomah county by the national government or by the state. When this is done the facts brought out by the survey can be added to the maps and the record made complete.

**1000 FAMILIES IN NEED**

**CHRISTMAS CLEARANCE BUREAU DOING GOOD WORK.**

Duplications on Lists Eliminated With Consequent Extension of Help Among Poor People.

More than 1000 Portland families are represented in the lists of welfare and benevolent associations and other organizations engaged in Christmas giving, reported to the Christmas clearance bureau of the confidential exchange, according to Miss Margaret Creech, secretary. Work will continue until Christmas eve and Miss Creech hopes to complete it without serious congestion of a last-minute rush.

Practically all welfare organizations of the city are making use of the bureau in arranging their lists. A large number of duplications have been removed so far with a consequent extension of help among poor families.

The bureau is operating in quarters furnished by the Press club on the second floor of the Elks' building. Lists are either brought there or telephoned to Broadway 5220. The work is carried on by volunteer help. Extra typing is being taken care of by Holmes Business college and Underwood employment bureau typists. Volunteers for office work are: Mrs. Roland Petyan, Mrs. George Clark, Mrs. Kenneth Tomlinson, Mrs. Godfrey Blohm, Mrs. Norman Beckley and Mrs. C. E. Mathiot.

**AMERICA BEING STUDIED**

Swiss Engineer Is Here to Look Into Industrial Development.

The industrial development of the United States has made such a profound impression upon the world and especially Europe that the Swiss government now has a commission in this country studying American methods with a view to adopting them for a programme of development for that European republic, according to Fritz Geiser, Swiss engineer, who is now in Portland making a study of mechanical engineering methods here as applied to the industries.

Mr. Geiser came over from Europe several months ago with the Swiss commission and he is now visiting various important cities of the country in his investigation. He expects to spend a couple of months here, after which he will go to San Francisco. He says that in all he plans to pursue his investigations in the United States for a couple of years before returning to his own country.

The Swiss engineer, who can converse in English, French and German, had some exciting experiences during the war and on a number of occasions narrowly escaped death at the hands of the Germans.

**Coast History to Be Taught.**  
WHITMAN COLLEGE, Walla Walla, Wash., Dec. 19.—(Special).—A two-term course in Pacific coast history is a new course in history to be offered by Whitman with the opening of the next term January 5. It has been announced here. The course will consist of lectures, outside readings



Copyright, 1920, A. Kirschbaum Company

**The Gift Supreme—  
A Kirschbaum Suit  
Or Overcoat**

**Our Assortment Is Complete—1921 Prices**

- |           |               |              |
|-----------|---------------|--------------|
| Hats      | Gloves        | Sweaters     |
| Shirts    | Suit Cases    | Jewelry Sets |
| Underwear | Neckwear      | Arm Bands    |
| Umbrellas | Bath Robes    | Cuff Links   |
| Hand Bags | Hosiery       | Scarf Pins   |
| Pajamas   | Mufflers      | Mackinaws    |
|           | Handkerchiefs | Night Shirts |

**All at Money-Saving Prices**

OPEN EVENINGS

**Phegley & Cavender**

COR. FOURTH AND ALDER STS.

and a text which will cover the Pacific coast history from its beginning, the conquest of Mexico.

**Northern Glee Club Coming.**

College vaudeville, including a 22-voice glee club, 14-piece symphonic

orchestra, and several semi-professional stunt men, will be featured in the appearance of the University of Washington glee club at the Auditorium Tuesday, December 28. The club, which appeared here on its annual tour last year, is again visiting

Every large city has one newspaper which, by universal consent, is the Want-Ad medium of the community. In Portland it's The Oregonian.

**We Are Going Out of Business!  
and the Time Is Growing Nearer**

*Every Pair of Shoes in Our Regular Fine Stock Is on Sale  
Regardless of Cost or Value*

No Shoes Have Been Brought in for Sale Purposes—You Have the Choice Here of America's Best Shoes!

These Are Examples of the Tremendous Reductions in Our Entire Stock of Men's and Women's Shoes

**Women's Pumps**

In Patent, Black Kid, Brown Kid or Calif.

Regularly Priced \$14 the Pair

**\$7.95**

Laird-Schober's

**Women's Shoes**

In beaver, gray, or patent kid; lace or button; French heels; very finest quality made.

Regularly Priced to \$20 the Pair

**\$9.95**

Laird-Schober's

**Women's Shoes**

In black kid, lace; Cuban, French leather heels; also Utz and Dunn's Brown Kid Lace Shoes with welt soles.

Regularly \$17.50 the Pair

**\$11.95**

All Sales for Cash Only—No Refunds—Nothing on Approval

**Boyden's or Banister's**

**Men's Shoes**

All Leathers—All Styles

Regular to \$19 the Pair

**\$11.95**

**White Canvas Shoes  
for Nurses**

Leather welt soles; absolute satisfaction in these.

Regularly \$10 the Pair

**\$4.95**

**Closing Out All Buckles**

Beaded—Metal—

**\$2.95 \$1.95**

129 Tenth St.,  
Between  
Washington  
and Alder



129 Tenth St.,  
Between  
Washington  
and Alder

Don't Wait—America's Best Shoes Here at Lowest Prices



**Merry Christmas  
to All the Family!**

Was there ever a Christmas like this? The world at peace again—the Holidays sparkling with happiness, hospitality and cheer!

Merry days—with merry friends. Let gladness and love prevail.

It is a time for an enduring gift. For a gift for all the family to enjoy for all the year and for years to come.



VICTOR.

**Chickering Pianos**

The golden tone of the Chickering piano—America's oldest and noblest piano—will increase the happiness of your home. Made in Uprights and Grands.

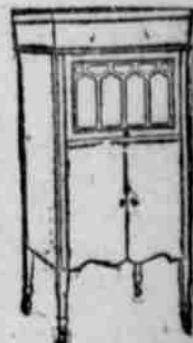
**Ampico Pianos**

The Ampico is a mechanism built within the piano that plays perfectly. It is the most perfect of reproducing pianos. It is so splendid and perfect as to surprise and delight the most critical. Come in, ask to hear the Ampico.



**Victrolas and Victor Records**

The Victrola is the oldest and most widely known of all Talking Machines. It is superior and will make a present that will be a constant source of pleasure. Priced \$25, \$35, \$75, \$125, \$150 and up to \$350. Art models up to \$1000.



CHENEY

**THE CHENEY**

The Cheney Phonograph is beautiful in design and delightful in its tone. It is made in many styles and will make a most appropriate present. Priced \$125, \$150 and up to \$385. Art models at \$350 up to \$1000.

**SAXOPHONES**

The Genuine Martin Melody "C" Saxophone is a present to charm and delight any boy or young man. It may be had in brass, silver or gold finish. Priced from \$110 up. Terms or cash. Order very promptly; supply limited.

**BAND INSTRUMENTS**

Cornets, Trombones, Saxophones, Drums and various other instruments. Some fine instruments for Christmas.

**VIOLINS**

The violin is the most heart-reaching of all instruments. We have a fine assortment of violins priced from \$15, \$25, \$50 and up to \$250. Violin cases, \$4 up to \$30.

**GUITARS**

Martin, Vega, Washburne, Gibson, Stewart and other standard makes. We have also some cheaper makes. Prices range from \$15 up to \$150.

**PIANOS**

We have some fine values in used pianos—\$295, \$350, \$595, \$450. Terms or cash. We are agents for Chickering, Mehlin, Packard, Marshall & Wendell, Bond, Shoninger, Armstrong pianos.

**ACCORDIONS**

Accordions have been very hard to obtain for the past several years. We have a limited supply. Prices from \$8 up to \$70.

**MUSICAL SUPPLIES**

Trumpets, Bugles, Metronomes, Music Stands, Music Bags, Violin and Banjo Cases, Harmonicas, Frisco Whistles, Ukuleles, Flutes, Strings for violins and other instruments. We have a new book of Hawaiian Melodies for Guitar and Steel Guitar.

Christmas Toys for Children—Toy Pianos, Music Boxes, Orchestra Bells.

The Store for Christmas Musical Things

**G. F. JOHNSON PIANO Co.**

147-149 Sixth Street, Portland

MAIL ORDERS GIVEN PROMPT ATTENTION

