

CHEVROLET COMMERCIAL CARS

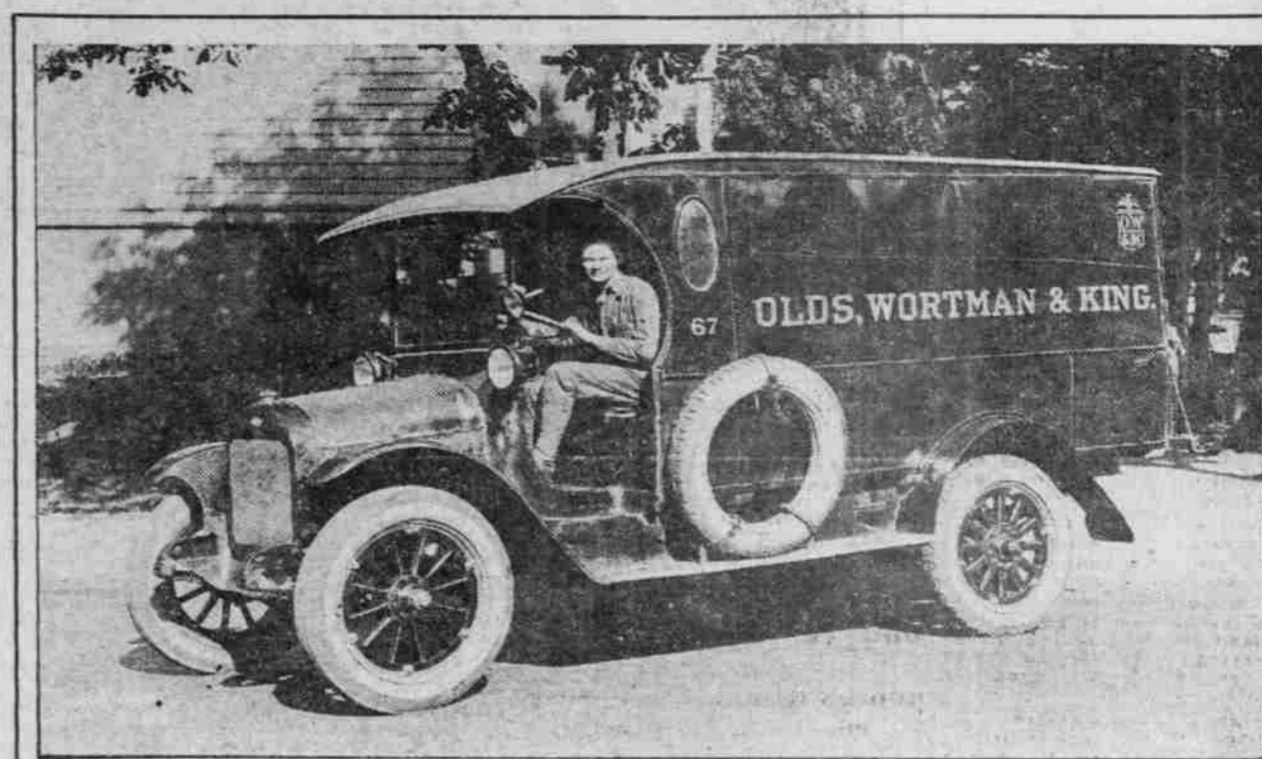
Solve the Transportation Problem for Thousands of Satisfied Owners—Why Not for You?



American Laundry's 1-Ton Truck



THE
PRODUCT
OF
EXPERIENCE



Olds, Wortman & King's 1-Ton Truck

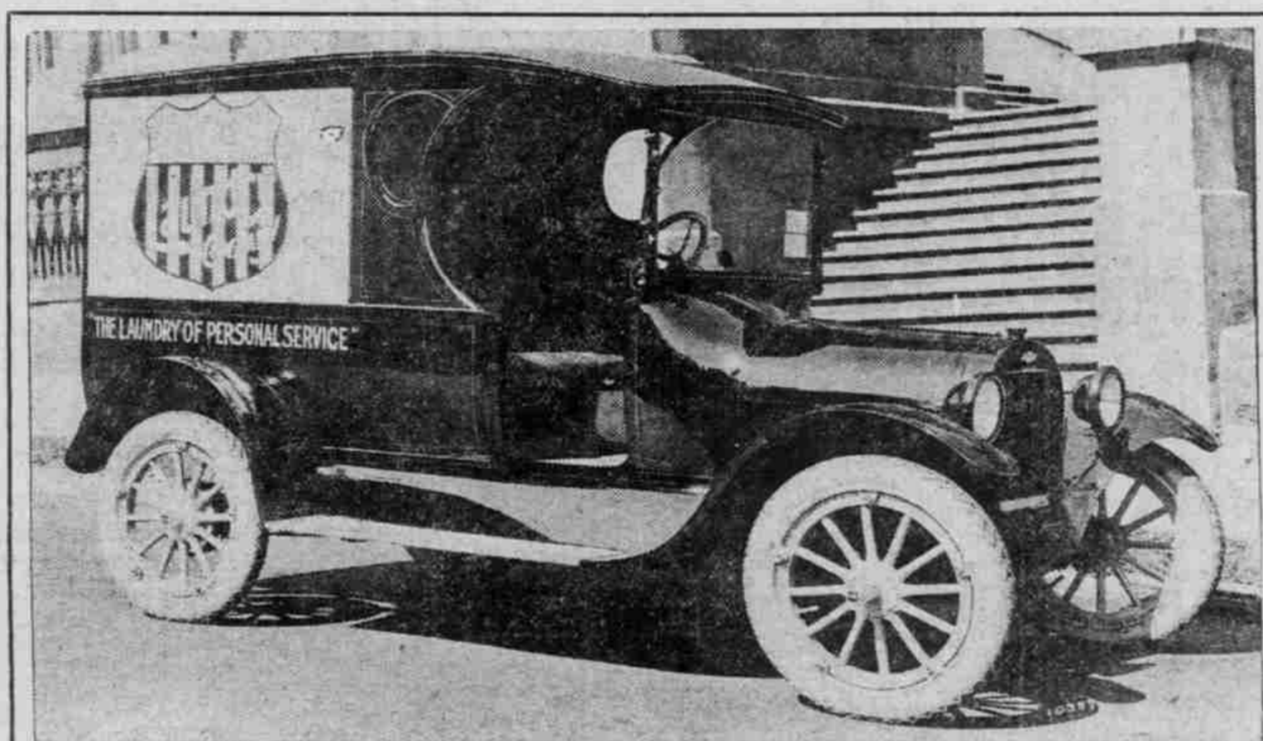
A GENERAL MOTORS PRODUCT—

The Chevrolet truck is built by a manufacturing organization whose products have attained a world-wide reputation for dependable service and value.

Whether you are a manufacturer, a merchant or a farmer, the Chevrolet will make and save money for you. It will extend the area of your delivery service. It will enable you to take care of more business with less labor.

The transportation of your merchandise is too important a question to decide lightly. More and more progressive men are finding their logical and entirely satisfactory answer in the Chevrolet One-Ton Truck.

In every respect, the Chevrolet One-Ton Truck reflects the ideal of the company to produce a really high-grade truck at a moderate price. And in every detail of its construction it conforms to that standard of quality that has earned for the Chevrolet products ever increasing popularity.



One of Union Laundry's Fleet of Chevrolet Light Delivery Cars

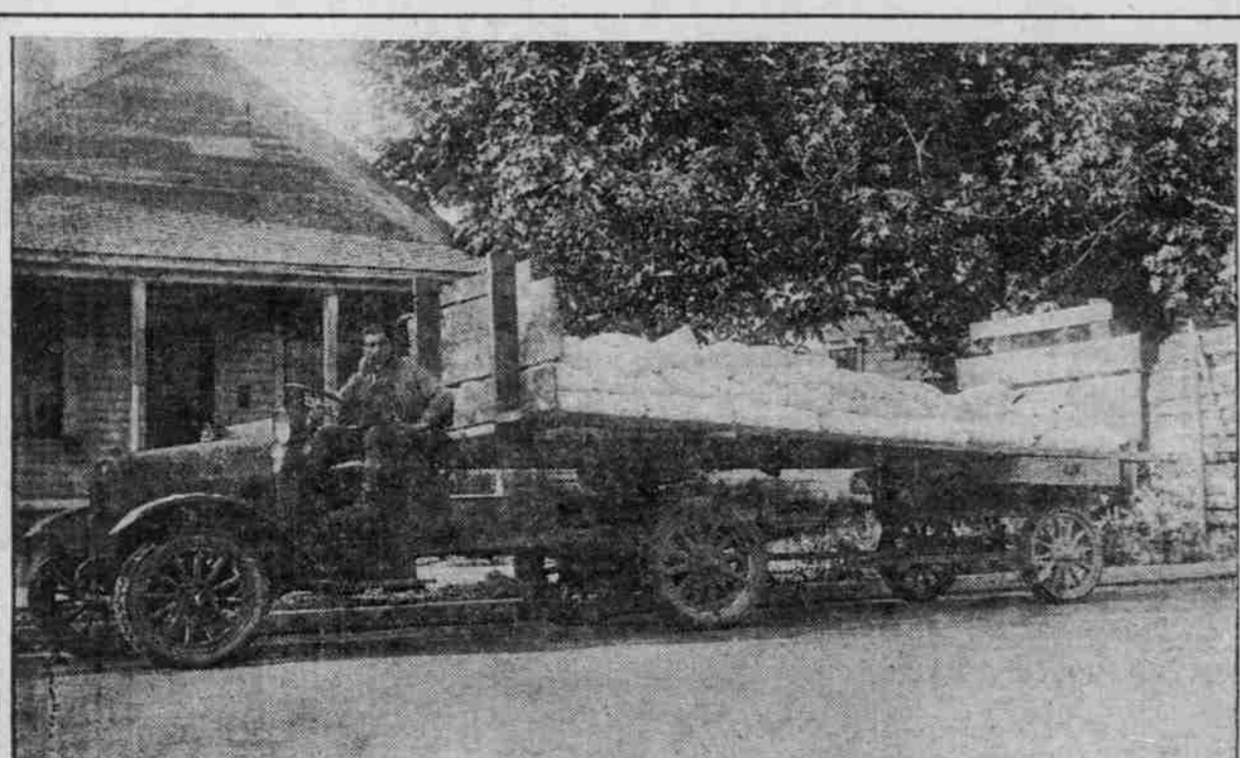
THE BEST CONSTRUCTION USED

Chevrolet One-Ton Truck and the Chevrolet Light Delivery Wagon are built to meet every transportation requirement which can be possibly expected of commercial cars of their respective capacities.

In their construction they show the same discriminating care in the selection of materials and the same thorough and accurate workmanship which have characterized Chevrolet construction from the beginning.

It has been this conscientious manufacturing policy that has earned for Chevrolet commercial cars a world-wide reputation for unusual value, dependable and economical service.

You have but to inspect either the Chevrolet One-Ton Truck or the Light Delivery Wagon to appreciate how and why they can increase the efficiency of your delivery system at a very low cost for maintenance.



Lloyd Scholver and His 1-Ton Truck With 3-Ton Load Operating Between Portland and Sheridan, Or.

Important Features of Chevrolet Truck

- Worm Gear Drive.
- Electric Lights and Starter.
- Valve-in-Head Motor.
- Governor which limits speed.
- Spring Lubricators.

Prices in Portland

1-ton Chassis	\$1561.25
1-ton Express	\$1707.10
1-ton Express and Top Complete	\$1796.75
490 Light Delivery, Complete.	\$973.95



Hudson & Gram Company's 1-Ton Truck for Quick Delivery of Wholesale Groceries

FIELDS MOTOR CAR CO., MULTNOMAH COUNTY DISTRIBUTORS

Alder at 14th St.—Grand Ave. & East Burnside—St. Johns

Phone Broadway 240

Service—We and our sub-dealers are equipped to and do give our many Chevrolet Owners the most Efficient Service.

Sub-dealers: P. H. Dunn Motor Co., Milwaukie and Bybee Sts.
C. E. Osborn, Gresham, Oregon