

"ROAD HOG" GROWS IN PUBLIC DISFAVOR

Joy Taken Out of Motoring, Lives Endangered.

TRUCK DRIVERS POLITE

All Autosts Know How Quickly Big Car Pulls to One Side at First Toot of Horn.

With the rapid increase of motor travel on the nation's highways, there is a growing demand that all motorists observe with greater care some of the simple rules of fairness and safety.

The driver who refuses to show courtesy to other cars is growing in disfavor, and his unpopularity bids fair to increase rather than grow less.

One of the most despised types of discourteous driver is the one termed inelegantly but quite accurately the "road hog." He is the fellow who insists on taking two-thirds of the road and crowding your car off the paved road when you meet him, or who refuses to turn out so you can get by when you overtake him.

Truck Drivers Courteous.

Passenger car drivers might well follow the example of drivers of motor trucks on this point of giving the other fellow his share of the road. Every motorist who spends much time on highways frequented by motor trucks knows that there seems to be a feeling of pride among the truck-driving fraternity in having trucks show every possible consideration to other cars.

It is a much less simple matter for a big truck to pull to one side than it is for a light passenger vehicle, yet many a motorist touring on heavily traveled roads will be surprised with what cheerful quickness some heavily loaded truck pulled to one side to let him pass at the very first blast of the horn.

In searching for a reason for the almost uniform courtesy shown by truck drivers to passenger cars, one looks far. Nearly every motor truck bears conspicuously the name of the firm which it represents.

Truck is an Advertisement. That truck is a touring advertisement of the company. Every truck driver who is proud of his company knows that the courtesy method could be found of establishing good will for it than by manifesting on the highway the courtesy method of dealing his firm stands for.

If passenger cars were similarly placarded with the names of their owners, some drivers who now dash along the turnpikes with little regard for other people's rights or comfort might be more considerate of those who try to please. It would be mighty poor advertising for some business man who depends on public favor to rush about constantly showing discourtesy to other motorists.

TRUCK TERMINALS NEXT

BOUND TO COME SOON, SAYS MACK OFFICIAL.

They Will Be on Outskirts of Large Cities, and Designed to Receive Small Loads.

Freight terminals designed and operated exclusively for motor trucks in the large cities of the United States will be the next stage in the development of highway transportation, according to R. E. Fulton, vice-president of the International Motor company, manufacturers of Mack trucks.

"With appropriations estimated to total nearly a billion dollars available for building roads in 1920, it is only necessary to enlarge highway construction facilities before we will have a comprehensive network of these trade arteries that will bring goods from hitherto undeveloped territories into large cities," said Mr. Fulton in a recent interview.

"It must be remembered, however, that with this increase in the number and capacity of highways will come increased demands upon the traffic resources in cities, and that the result will be serious congestion unless city traffic facilities are increased to offset the effects of outside highway construction. Since it is practically impossible to build more city streets or to widen them, it will be necessary to distribute freight more efficiently.

"This can be done by establishing motor truck freight terminals for handling small shipments, similar to the railway terminals, each to serve as a clearing house for outgoing and incoming loads can be assembled and distributed. Such a system implies the co-operation of the motor express concerns both in delivering merchandise and in obtaining return loads.

"Operated either by private concerns or reciprocally by the express concerns themselves and located on the outskirts of cities, these terminals would eliminate the expense and congestion involved in delivering and calling for small consignments. Their method of operation would be to receive truckloads that are made up of several consignments and to deliver them on definite organized routes to the consignees. They would not, of course, handle loads which the full capacity of the truck is taken up by one consignment because this type of haul can be handled better without using terminals. They would be confined to delivering and calling for small shipments where much duplication is ordinarily to be found.

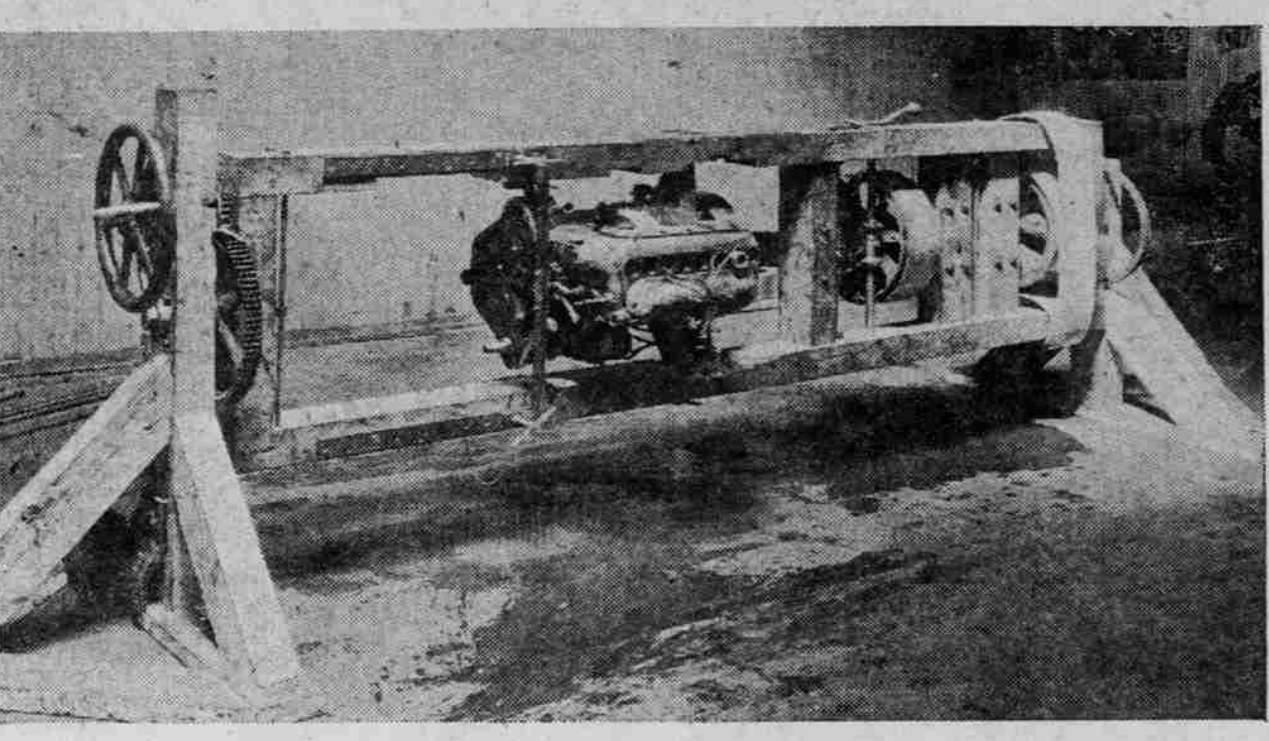
"Motor truck freight terminals would thus be a benefit to both the motor express concerns and the city—to the former by lowering delivery cost and insuring return loads, and to the latter by providing a means for offsetting traffic increases."

Handy Tool Set.

An admirable tool set was recently designed by an ingenious motorist. This consisted of 11 tools and an adjustable handle to be used with all the weapons. This handle has a wind nut on the side so as to hold firmly the particular tool being used. The set comprises three carbon scrapers, one small mirror for inspections, one rod for testing electrical connections, a hook for removing cotter pins, a knife blade for cutting and cleaning electric wires, a small bearing scraper, four-edged roamer and an awl.

It is estimated that no less than 5000 persons are riding about New York city in stolen automobiles.

REVERSIBLE RUN-IN STAND IS NEW FEATURE FOR MECHANICAL DEPARTMENT OF WHITE COMPANY BRANCH HERE.



Equipment for fitting crankshaft bearings devised by local man. To accommodate the largely increased stock of parts now being carried, the White company factory branch at Park and Couch streets is greatly enlarging its stockroom, as well as installing new features in its service department. This progressive move has been rendered necessary by reason of the increasing number of White fleets which are being put into service by Portland firms.

OLDS TRUCK IN DEMAND

LIGHT VEHICLE IS POPULAR WITH BUSINESS MEN.

Theory of Economical Power Wag-on so Sound 8000 Were Sold in Very First Year.

The motor-truck business might at this time very appropriately be called the world's wonder industry. Springing up as it has in so very few years, and against such ingrained prejudice, the greatest wonder is that it stands on so firm a foundation. Speaking in this vein, F. L. Emerson, sales manager of the Olds Motor Works, Lansing, Mich., went on to say that his company, which has been in the truck business for less than a year (though well known in the passenger car field for a score of years), undertook the manufacture of trucks only after making a searching investigation.

"The new driver usually kills his engine on the track when he passes in front of a street car. Again, did you ever step on the accelerator instead of the brake and run over the curb? In the winter, did you let your radiator freeze?"

BRAKE INSPECTION NEEDED

THERMOID RUBBER COMPANY ISSUES CHART.

Motorist Who Regularly Looks After Brakes Will Have Them When Need Is Greatest.

All of us have said before now: "We have too many laws. Well, we do have a good many, but do we every stop to reason why so many?"

It is just because human nature is so peculiar about some things. Now, we all know the brakes on the automobile should be regularly tested; we know that they are the most important factor of safety of an automobile, we know our lives and those of the pedestrian, may some day depend upon them working properly; and yet, the average autoist simply puts off having them inspected and some day, some far-sighted man in the senate or house of representatives, who wants to do a public service, will offer a bill compelling brake inspection. Then we will hear somebody say, "Hello, another law!"

Let us do what we know we should. Have our brakes inspected regularly and one more law will be avoided. The Thermoïd Rubber company has issued a chart which tells you if your brakes are reasonably correct, and, if they need adjustment, see your repairman and have some standard advertised brake lining put on and the proper adjustment made.

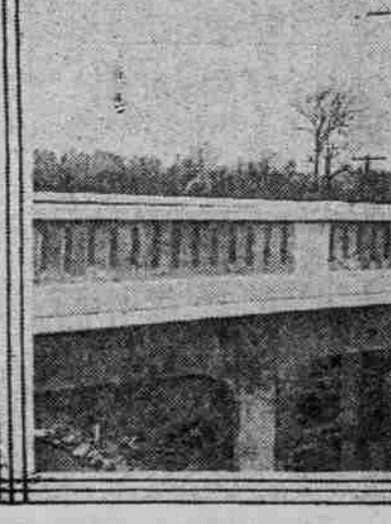
Gasoline and lubricating oils in Morocco may be purchased at practically the same prices as in most European countries.

CADILLAC IS DITCH DIGGER

One of Novel Uses to Which Passenger Car Engine Is Put. A power plant for digging ditches and a portable home for six workmen, are two novel uses of the Cadillac motor car, originated by Art Eversull of Stuart, Ia.

Mr. Eversull is a drainage expert, in laying underground tiling on farm lands the old system of hand digging lacked the necessary element of speed. A modern ditch digger was purchased, and a '20 Cadillac engine was installed as power.

NEW CONCRETE BRIDGE ON LOWER HIGHWAY.



This bridge, recently opened to traffic, is on the lower Columbia river highway just below Deer Island, where for several months while it was building motorists had to detour into a gully around the new concrete work. It parallels the tracks of the Spokane, Portland & Seattle railway.

ESSEX HANGS UP RECORD

CROSS-COUNTRY TRIP IS CUT DOWN HALF DAY.

Car Carries 50 Pounds of Mail From San Francisco to New York; Another Makes Time.

The recent drive of a stock Essex car across the United States in only a few minutes over four and one-half days, clipping all previous records of the kind over half a day, is one of the greatest endurance tests ever applied to a motor car, in the opinion of C. L. Boss, local Essex distributor, who has received additional data regarding the run from Essex headquarters.

The event was arranged under the auspices of the postal authorities, the car carrying 50 pounds of mail from San Francisco to New York. The same machine was used throughout the entire trip, an Essex stock car being taken for the purpose, and the machine was pushed through the long trip virtually without a stop. The time made from coast to coast was four days, 14 hours and 43 minutes. This record is 12 hours and 48 minutes less than the fastest previous time for a coast to coast automobile trip, and was the first time in history that a machine was ever driven across the continent in less than five days. At the same time, the car carrying the mail, which was eastward another Essex, also a stock car, was making the trip from east to west, and while the time in this instance was not quite so good, this car also succeeded in smashing all previous records in driving the mail sack in San Francisco just four days, 19 hours and 17 minutes out of New York.

PORTLAND YAKIMA BELLINGHAM

80-82 Sixth St. Phone Broadway 5508.

OUR SPECIAL PRICES

Table with columns for Size, FABRICS, SALES PRICE, and SAVING. Lists various tire sizes and their corresponding prices and savings.

PORTLAND YAKIMA BELLINGHAM

80-82 Sixth St. Phone Broadway 5508.

CUT TO THE QUICK TIRES AND ACCESSORIES

WEEK AUG. 23-28

GLASS WINDSHIELD WINGS. Plate glass with solid brass nickel-plated fittings; very handsome and popular. Regular Price.....\$20.00 SALE PRICE.....\$11.95

BIKE TIRES. Finest quality; best non-skid; each tire guaranteed; worth \$4 and \$5. PEERLESS Sale Price.....\$1.84 AMERICAN BEAUTY Sale Price.....\$2.84

Ford Cork-Faced Transmission Lining. A good grade of cotton lining, faced with cork; complete set of three bands with rivets. Usual Price.....\$3.00 SALE PRICE.....98c

VULCANIZERS. Our Marvel Junior Vulcanizer does a permanent repair job in less time than you can put on an ordinary patch; very simple to operate. Usual Price.....\$1.50 SALE PRICE.....69c

PUMPS. Two-cylinder Hand Pumps; black enameled steel barrels; heavy base. Strong, efficient pumps. Usual Price.....\$2.45 SALE PRICE.....\$1.46



The World's Master Tire NORWALK. The Tire That Gives Complete Satisfaction. No other tire surpasses it in Real Service Performance.

GUARANTEES. Fabrics - 6,000 miles Ford sizes 7,500 miles Cords - 8,000 miles

REAR VIEW MIRRORS. 3 inches by 15 inches; bevel plate glass; placed inside at top of windshield; new and popular. Regular Price.....\$5.00 SALE PRICE.....\$3.05

FORD PISTONS. Best grade close grain, new iron, ground to size; complete with pins and bushings. Regular size and oversize, per set of four—SALE PRICE.....\$9.40

SEALTITE INNER TUBE SHEET PATCHING. Quantity sufficient for patching fifty punctures; made by Federal Rubber Co.; tube of cement, buffer and directions with each outfit. Usual Price.....50c SALE PRICE.....17c

FORD HEAD LAMP BULBS. 21 Candlepower, 9-Volt Tungsten Lamp Bulbs; quality guaranteed. Regular Price.....50c SALE PRICE.....19c

COIL POINTS. For use with Ford or K-W coil units; quality guaranteed. Usual Price, per pair...40c SALE PRICE, pair...17c

AUTOPARTS SUPPLY CO.

80-82 Sixth St. Phone Broadway 5508. Send for Our NEW ILLUSTRATED FALL CATALOGUE of Tires and Automobile Accessories.

Honolulu Has 5000 Autos. HONOLULU, T. H., May 18.—(Special).—There are now 5000 automobiles in Honolulu, according to the latest figures furnished by the sheriff's office in the matter of registrations.

Care of Wheels. The wood wheels with which the average car is equipped need little attention, but there are certain small formalities that must be attended to.

Ask Yourself

- When you are ready to buy a truck ask yourself 1. Who is the manufacturer? 2. How long has he built trucks? 3. Will he continue in business? 4. Who are the distributors and the dealers? 5. What financial backing have they in my community? 6. Are they responsible? 7. Will they continue in business? 8. What is their service policy? 9. Do they carry a large stock of parts, and where is it? 10. Will they give me continuous service, the service that satisfies?

The answering of these questions will persuade you to give earnest consideration to GMC Trucks. Wentworth-Irwin, Inc. Second Street, Corner Taylor, Portland, Oregon

W. C. Garbe, Inc. Formerly Oregon Motor Car Co. DISTRIBUTORS BROADWAY AT BURNSIDE Phone Broadway 616 PORTLAND-SEATTLE-PENDELTON