

## YELLOWSTONE TOURS PROMISE NEW MARK

Tourist Travel Expected to Set Record.

EARLY OPENING IS MADE

Main Roads of Park Cleared in Spite of Obstacles of Snow and Severe Winter.

Tourist travel in Yellowstone national park since the official opening of America's great wonderland on June 15 is promising to establish the present season as the best the park has ever known.

Despite the unusually severe winter, which caused much suffering among the wild animals and for months defied the herculean efforts of the rangers to break through the great walls of snow thrown over the automobile highways, the main roads of the park were opened up this year several days in advance of the date they have been made accessible in former years.

Heroic measures were necessary, of course, but the indomitable spirit of the two-acre road crews engaged in opening up the park road system conquered all impediments and on June 15 the famous American scenic wonderland was officially proclaimed open for the present season.

The transportation of the thousands of nature lovers who come from all parts of the world is handled by the Yellowstone Transportation company, which is operating 150 busses over the various park roads. Without doubt this is the most extensive automobile passenger transportation project in the country outside of the large taxicab companies of our big cities.

**Park Has 150 Auto Busses.**  
Since the opening of the 1920 season the 150 busses, most of them in the park, have covered 173,600 touring miles, carrying approximately 11,000 visitors. The service is maintained by the supervision of H. W. Child and his assistant, W. M. Nichols, who deserve great credit for the highly efficient service rendered.

All the busses are White cars, 125 of the 11-passenger type and 25 regular touring cars. All the 11-passenger cars are built on 3-ton chassis. In addition to these 150 busses the transportation company has 10 trucks—four two-ton, two five-ton and six 3-ton. The five-ton trucks are gasoline tankers which supply the four filling stations of the park with their gasoline requirements, while the others are used to transport supplies to the various park hotels.

All of the 150 busses and 12 trucks are operating on Goodyear pneumatic tires, which have played a very important part in maintaining the excellent service for which Yellowstone has become noted throughout the country. The busses are equipped with 3625 Goodyear cords and the trucks with other sizes, according to load-carrying capacity.

The item of tire maintenance for a bus fleet of this magnitude is really a matter to excite wonder. On the various trucks and busses 648 tires are rolling continually and 162 more are carried as spares. The tire investment alone requires an outlay of more than \$100,000. Complete and satisfactory tire service is rendered by the Goodyear branch at Butte, Mont., under the direction of J. H. Weiner, manager.

**Auto Drivers All Reliable.**  
The services of 90 drivers are required to take care of the tourists who come by train to the Gardiner, Yellowstone and Cody entrances. These 90 men have been selected from more than 1000 applicants from all parts of the country. Many of them are college men, using this means of securing funds for defraying next season's college expenses.

In the operation of his car each driver is compelled to adhere to a most exacting schedule and any violation of this schedule is followed by immediate dismissal. This intricate schedule stipulates the speed which must be maintained from one point to another and even designates the gear in which the car must be driven. Strict adherence to all rules is required in the interest of economy of operation and safety to tourists. A few days ago a driver checked in at a park station with a load of tourists 15 minutes in advance of schedule and was immediately dismissed for his infraction of the rules.

A total of 22,000 persons visited the park during the 1919 season. Using the attendance up to the present date, fully 27,000 will see the park in 1920. In addition to the tourists that tour through the park in their own cars, about 300 come in daily on the park busses to take the four days' eight-wheeling trip, so that about 1200 persons must be taken care of daily. Often this number runs up to 1700 when special parties are shown through.

The park contains 350 miles of improved highway.

### VACUUM FOR AUTOS LATEST

Detachable Cleaner Attaches to Exhaust for Suction.

A vacuum cleaner for an automobile, which derives its suction from the exhaust, is the latest arrangement for keeping the floor spotsless. The cleaner is called the La France detachable, and is manufactured and sold by the Franklin Products company, Inc. The Braly Auto company, local Franklin agents, have received some of the advance information about the novel cleaner and will act as agents in this territory.

The principle of the cleaner is the same that is used in many water pumps when a current of water from a hose of pipe is used to create a suction through an empty pipe which joins the pressure pipe at something like right-angles. The usual cleaning brushes, such as are found with electric vacuum cleaners, come with the apparatus and are specially designed to fit to the cushions and floor and draw away the dust and dirt of the trip.

### AUTO INDUSTRY FIGURES 651,450

Amount Paid to Workers in 1919 Reached \$813,000,000.

CHICAGO, Aug. 21.—The automotive industry of the country now employs 651,450 persons. An increase of 63.3 per cent since 1909, when the number was 35,359, according to figures compiled for 1919.

In 1909 \$28,000,000 was paid in wages to workers in the automobile industry, but in 1919 the amount paid to workers was \$813,000,000. One hundred and twenty-seven thousand seven hundred and thirty-one vehicles with a total value of \$249,000,000 was the achievement of the industry in 1909, while 1,974,016 vehicles, with a value of \$2,696,000,000, were produced in 1919.

## HOW'S THIS FOR A SOLUTION OF THE GASOLINE SHORTAGE, DIPPING IT UP FOR NOTHING ALONG THE RAILROAD RIGHT OF WAY NEAR LA GRANDE.



SCENES OF RECENT WRECK OF A FREIGHT TRAIN AT UNION JUNCTION, OR., WHEN 20 FREIGHT CARS, INCLUDING FIVE CARS OF GASOLINE, PILED UP.

LA GRANDE, Or., Aug. 21.—(Special.)—Residents of the La Grande section were able to help themselves liberally to gasoline as a result of an accident last Sunday at 1 P. M., when a freight train wrecked itself at Union Junction, 20 miles from La Grande, and 20 freight cars were piled up.

The accident was reported to be due to a broken wheel. No one was injured, but six cars of merchandise, coal and other commodities were scattered broadcast and, worse yet, five cars of gasoline in the train were punctured and the precious fluid leaked out, a complete loss—to the railroad company at least, if not to motorists who were able to rush to the scene.

The gas formed a large, deep pool in the field just below the right of way, and the picture shows passing motorists and nearby residents helping themselves. Trucks carrying empty drums were pushed to the scene to get in on the free gasoline party. No limits about half a tank capacity or other regulations were observed.

The other picture shows the Union county people helping themselves from a break in the top of the car, where the gas is accommodately dripping out, just like it used to drip from the old-fashioned spigot. Milk cans, tubs, buckets and about every other kind of receptacles were used. The big man holding up the five-gallon can and facing the camera is Tom Johnson, one of the big hog raisers of the valley. Freight traffic was held up until Monday morning as a result of the wreck.

### TROUBLE OFTEN INSIDE

TIRE BREAK-DOWN NOT ALWAYS UNDERSTOOD.

Robert E. Allen Tells How Difficulty Often May Be Avoided by Auto Drivers.

Nearly as much tire trouble comes from a breakdown of the tire from the inside out, where the motorist does not realize there is anything the matter until in some cases the tire is too far gone to repair, as comes from the wearing down of the tread on the outside, according to Robert E. Allen, president of the Allen & Hebard company, local distributors of Thermoid tires. An advantageous feature for tires, to prevent breaking down from the inside, according to Mr. Allen, is an extra layer of fabric, covering with a non-porous tread that prevents breaking down from the effects of moisture. Needless to say, this is not put on to add strength, but does protect the carcass, which, as has such a feature.

"The external appearance of a tire mounted on the wheel does not show the strength of the tire any more than your shoe shows the strength of your foot," explained Mr. Allen.

"A very large percentage of tire trouble is due to the carcass breaking down from the inside. The tread of the tire is not put on to add strength, but does protect the carcass, which is the reason why you should always look for a tough tread and a well-built carcass.

"Hitting a street car track imbedded in the pavement breaks down more carcasses than stone bruises, but does not show on the outside.

"Before going on a long trip it is always economy to have some first-class tire man examine the inside of each tire and repair all weak places.

"If it were possible to see and examine the inside of the tire as often as the tread is examined it would save many a disagreeable job on the road 50 or 100 miles after the blow that did the actual damage.

"By looking more carefully to the strength of the carcass when purchasing tires much cheaper mileage can be obtained, although it will cost more per tire."

### RAINIER IS SETTING RECORD

10,000 More Visitors Expected in 1920 Than Any Previous Year.

TACOMA, Wash., Aug. 21.—(Special.)—Fully 10,000 more persons will visit Rainier National park this year than last if present figures are an indication. T. H. Martin, manager of the Rainier National Park company, declared this week. Seven hundred

### NARROW QUARTERS ON THE PACIFIC HIGHWAY IN SOUTHERN OREGON.

Apply regular silver polish to brighten up the nicked parts of the car. Rub the polish on and off with soft cloths and note the result.

U. S. HAS 21 MILLION HORSES

Three to Each of 7,248,544 Farms in Country Estimated.

A monthly vehicle magazine is authority for the statement that there are 21,525,000 horses in the United States, or less than three horses on each of the 7,248,544 farms in this country. The number of horses in Chicago fell off 20,000 in the last four

years, while in New York the decrease for the same period of time was 51,484.

At this rate, he points out, the horse will soon be a curiosity on our city streets. The decrease is attributed to the growing popularity of the motor truck.

### MAINE NAMES HUMBINGER

Man Who Can Pronounce Them Has Nimble Tongue.

The nomenclature of Maine probably outdoes that of any other state in furnishing memory tests in spelling. Among its Indian named rivers are the Penobscot, Kennebec, Androscoggin, Allagash and Saco, and among the lakes and ponds Moosehucumegitic, Syaladadobis, Sebago, Schoodic, Cuscutic, Caucongoms, Pamkood-Kamook, Baskhegan, Coboseecon-lee, Chingussabamtacock, Molechunk-amunk, Pennessewasee, Maranacook, Amarisoggin, Sheencook and Wolkensohcock.

### Magneto Failure.

A common cause of poor magneto action is dirt on the interrupter points. When the points are suspected of being dirty a few drops of kerosene will remedy the trouble and restore the parts to good working order.

### Tractor Repair Bill Passed.

The Louisiana state legislature passed what is to be known as house

### HOTELS HELD BIG NEED

DR. B. E. MILLER SAYS INDEMENT MUST BE OFFERED.

Lack of Camp Sites and Other Conveniences Prevent Growth of Tourist Travel, Is View.

GOOD NEWS FOR MOTORISTS

California to Put Sacramento Canyon Road in Good Shape.

The California highway commission has authorized the highway engineer, on his recommendation, to proceed with the surfacing, widening and super-elevating of curves, widening the roadbed, providing better alignment, and eliminating sharp, blind curves on the state highway between La Moine and the northerly boundary of Shasta county. The length of the road to be improved is 21 2-10 miles. The commission expects to spend something over \$4000 per mile for the improvement of this road, and the work will be pushed under the supervision of Division Engineer Bedford.

The commission has three crushing plants available for this work. One of them is now in operation at Mears creek, one about one mile south of Castella, and the third is now at Delta and will be released and moved to Gibson, a central location for the work to be done.

Traffic demands on this Sacramento canyon road are continually increasing, and the commission's purpose is to maintain it in the best possible condition that the available funds will permit.

### 57,000,000 TIRES FOR U. S.

Year's Output Will Show Big Increase Over 1919.

AKRON, O., Aug. 21.—Statistics compiled by the Chamber of Commerce show the peak demand for tires in the United States will be 57,000,000 a year for passenger cars and motor trucks. The present tire output of the country approximately is 45,600,000.

It is estimated at the end of the present year the annual requirements will be 57,000,000 tires. This estimate is based on figures of automobile manufacturers, indicating an output this year of approximately 1,600,000 cars and between 375,000 and 450,000 trucks.

### To Dull Up Fittings.

Apply regular silver polish to brighten up the nicked parts of the car. Rub the polish on and off with soft cloths and note the result.

### Car's Performance Makes Gallon Mileage About 68.4.

SPOKANE, Wash., Aug. 21.—All known inland Empire records for gasoline economy were shattered last week on the Spokane east of Dishman, when an Overland touring car with one passenger was driven by W. Lawton of the Willard Pacific company 17 1/2 miles on a measured quart of commercial gasoline, or at the rate of 68.4 miles to the gallon.

The car's performance was observed by A. R. Immisch, Spokane manager of the Shell Oil company; R. W. Le Duc, branch manager of the Flak Rubber company here, and John W. Stewart of the automobile department of the Spokane-Review, who was appointed as observer by R. F. Blackwell, vice-president of the Spokane Automobile commerce.

### U. S. HAS 21 MILLION HORSES

Three to Each of 7,248,544 Farms in Country Estimated.

A monthly vehicle magazine is authority for the statement that there are 21,525,000 horses in the United States, or less than three horses on each of the 7,248,544 farms in this country. The number of horses in Chicago fell off 20,000 in the last four

### WILLARD SERVICE

Ninth and Everett East Burnside at 17th

WILLARD SERVICE

WILLARD SERVICE

WILLARD SERVICE

WILLARD SERVICE

WILLARD SERVICE

WILLARD SERVICE

WILLARD SERVICE

WILLARD SERVICE

WILLARD SERVICE

WILLARD SERVICE

WILLARD SERVICE

WILLARD SERVICE

WILLARD SERVICE

WILLARD SERVICE

WILLARD SERVICE

WILLARD SERVICE

WILLARD SERVICE

WILLARD SERVICE

WILLARD SERVICE

WILLARD SERVICE

WILLARD SERVICE

WILLARD SERVICE

WILLARD SERVICE

WILLARD SERVICE

WILLARD SERVICE

WILLARD SERVICE

WILLARD SERVICE

WILLARD SERVICE

WILLARD SERVICE

WILLARD SERVICE

WILLARD SERVICE

WILLARD SERVICE

WILLARD SERVICE

WILLARD SERVICE

WILLARD SERVICE

WILLARD SERVICE

WILLARD SERVICE

WILLARD SERVICE

WILLARD SERVICE

WILLARD SERVICE

WILLARD SERVICE

WILLARD SERVICE

WILLARD SERVICE

WILLARD SERVICE

WILLARD SERVICE

WILLARD SERVICE

WILLARD SERVICE

WILLARD SERVICE

WILLARD SERVICE

WILLARD SERVICE

WILLARD SERVICE

WILLARD SERVICE

WILLARD SERVICE

WILLARD SERVICE

WILLARD SERVICE

WILLARD SERVICE

WILLARD SERVICE

WILLARD SERVICE

WILLARD SERVICE

WILLARD SERVICE

WILLARD SERVICE

WILLARD SERVICE

WILLARD SERVICE

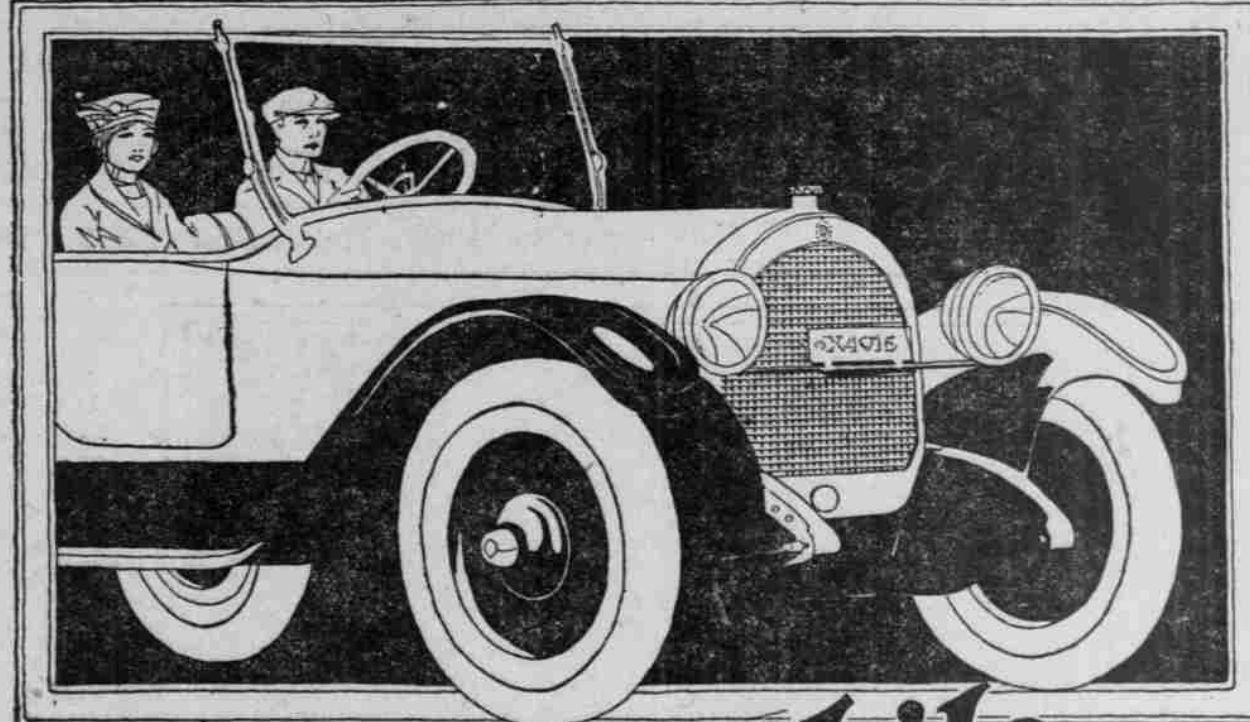
WILLARD SERVICE

WILLARD SERVICE

WILLARD SERVICE

WILLARD SERVICE

WILLARD SERVICE



# Oldsmobile

Sixes and Eights

WITH an athlete's physique but in boulevard dress, the Oldsmobile represents automobile adaptability of the highest order. Let the owner's desire run to pride of appearance or pride of performance, he finds it most completely expressed in Oldsmobile.

A mechanical masterpiece set back of a graceful radiator; brute power masked by a smart hood; sheer ruggedness under a roomy body, whose lines and appointments bespeak style and comfort.

The Oldsmobile "Six" is furnished as a 5-passenger touring car, convertible roadster, coupe and sedan. On the "Eight" chassis three types are provided: the 4-passenger "Pacemaker," the 7-passenger "Thorobred," and the Sedan.

Immediate Delivery on Touring Cars—Also Oldsmobile Economy Trucks

## OLDSMOBILE CO.

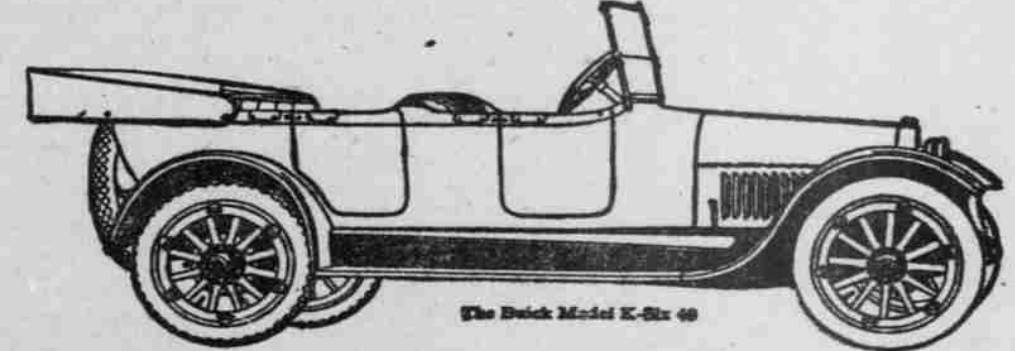
Broadway at Couch OF OREGON Phone Broadway 2270

bill No. 248, requiring all farm implement companies operating within the state to carry at least a year's supply of all parts for tractors and automobiles in the interest of the farmers so as to avoid delays necessitated by sending to the factory for desired parts. Of course, this includes bearings.



**BUILT** on the same extra-length chassis as that of the large Buick Sedan, this seven-passenger model represents, in open car design, an exact duplication in size and quality of the more costly closed body type. In every respect, its manufacture is just as scrupulous to fulfill in serviceability the promises made by its fine appearance. And the full measure of the Model K-Six-49 makes it generous in comfort—in roominess—in looks—in all other qualities that are best appreciated in combination with the powerful Buick Valve-in-Head Motor.

Model K-44 \$1595.00  
Model K-45 \$1825.00  
Prices f. o. b. Flint, Michigan  
Model K-46 \$2235.00  
Model K-47 \$2485.00  
Model K-49 \$1645.00  
Model K-50 \$2895.00  
Prices Revised April 1, 1920.



Immediate Delivery on All Open Models

When better automobiles are built, Buick will build them

## HOWARD AUTO CO.

Distributors  
Fourteenth and Davis Streets, Portland  
Broadway 1130, 56-341  
Los Angeles — San Francisco — Oakland