

YELLOWSTONE PARK ROADS ARE IN SHAPE

Only Two Not Good After Hard Winter.

BULLETINS ARE ISSUED

Steady Improvement Reported by Aid of State and Also by Private Contributions.

SALT LAKE, July 3.—Despite heavy snows and abundant rains in the intermountain territory adjacent to Yellowstone national park, bulletins compiled by automobile and highway associations show that with possi-

route much easier than last year. The big new tourist hotel-camp development at Broadwater, Helena, will cater especially to interpark tourists. The Yellowstone-Glacier Bee Line highway, White Sulphur Springs and Great Falls was ready for travel July 1.

The road from Yellowstone park to the west entrance of Glacier park via Butte, Missoula and Kalispell is reported to be in fine shape. Glacier park roads are in improved condition and are already being used by motorists.

APPERSON MAKES HARD RUN

Only One Repair Needed on Tour From Illinois to Los Angeles.

"The Apperson car's performance and economy are illustrated by a rough 2000-mile trip recently made by one of our cars," says T. E. Jarrard, vice-president of the Apperson Brothers' automobile company.

"G. J. Gollmar drove his Apperson 2500 miles from Bloomington, Ill., to Los Angeles. He was so delighted with his car's showing that he wrote to us about it.

HASTE MAKES HURT IN AUTO ACCIDENTS

Courtesy on Driver's Part Would Save Trouble.

CHANCES SELDOM PROFIT

Rights of Road and Even Common Decency Sometimes Ignored in Stress.

Nearly every automobile accident is the result of somebody's carelessness. Somebody taking a chance, somebody reckless, somebody in a frantic hurry when a few moments extra would have made no material

LOGGING NEAR PORTLAND WITH THE HELP OF A WINTHER TRUCK.



The truck in the picture, a 3 1/2-ton Wintner, sold by the Chessman-Stater Motor company, has hauled it 2600 feet of fir logs for the Burlington mill beyond Linton. It hauls down several similar loads a day from the hills 11 miles out of Portland. This timber was practically out of the market for logging purposes before the day of motor trucks, for it comes from isolated clumps of trees that would not justify construction of a logging railroad.

two exceptions all roads approaching the park are in excellent shape and improving steadily through the aid of state and private contributions to highway funds, according to the reports of the information bureau of Yellowstone national park. The exceptions noted are the roads leading north and northwest from southern Wyoming points to the south entrance to the Yellowstone by way of the Wind River and Hoback canyon, which cannot be navigated by cars until some time in July.

The roads in the park itself are in unusually good condition. All of the passes have been cleared of snow, except Dunraven, and it was open for traffic June 23. It was necessary this year to clear most of the park roads of snow, using a heavy snow-plow attached to a caterpillar tractor.

LATE ROAD INFORMATION

FOREST SERVICE COMPLETES DATA FOR MOTORISTS.

McKenzie Highway Not Yet Open to Summit, and Santiam Road Is as Yet Inaccessible.

Here is the latest road information compiled by field men of the United States forest service on Oregon and Washington roads in and near national forests:

- Western Oregon: Santiam wagon road—Open, Cascadia to Seven-Mile hill cabin; good. Seven-Mile hill to Fish lake, inaccessible for autos, should be open July 1.
- McKenzie highway—Open, Eugene to Alder springs, Eugene to Blue river, good. Blue river to Wilder springs, passable. Alder springs to Wilder point, closed.
- Willamette highway—Eugene to Rigdon ranger station, open. Eugene to Oakridge, good. Oakridge to Rigdon, fair. Rigdon to summit, closed, permanently.
- Cottage Grove-Distion-Lundpark—Open, good. To Lundpark from here, rough.
- Great City-Port Orford—Open. Brookings to Crescent City, excellent. Brookings to Port Orford, poor.
- Grants Pass-Crescent City—Open. Good except over Oregon mountain.
- Western Washington: White Salmon-Trout Lake-Glenwood—Open, fair.
- Little White Salmon road—Open, Cooks to Oklahoma ranger station, good.
- McClellan pass highway—Kumakie in The Dalles, open; good. The Dalles to park entrance, closed for summer by construction detours. Camp grounds available.
- Spirit lake road—Open from Castle Rock, fair. Good camp grounds.

NEW CHEVROLET SALESMEN

William M. Burns and George Irvine With Fields Company.

Announcement was made last week by LeRoy R. Fields of the Fields Motor Car company, Chevrolet distributors here, that George J. Irvine and William M. Burns have been added to his sales force. Irvine was formerly with Ruslight & Penney, Ford dealers. He will sell Chevrolet passenger cars. Burns was with the Northwest Auto company and will devote his time to Chevrolet commercial cars.

The first four-cylinder car was brought out in 1920.

EIGHT REPUBLIC TRUCKS IN DELIVERY FLEET OF MUTUAL CREAMERY.



These trucks include four of one-ton, three of 1 1/2-ton and one of 3 1/2-ton capacity. This creamery purchased its first Republic truck three years ago from the Roberts Motor Car company and now has increased its fleet to eight, all Republic trucks.



Popularity Earned in Meritorious Service

CHEVROLET is certain to be oversold. The very grave question is—will you get yours?

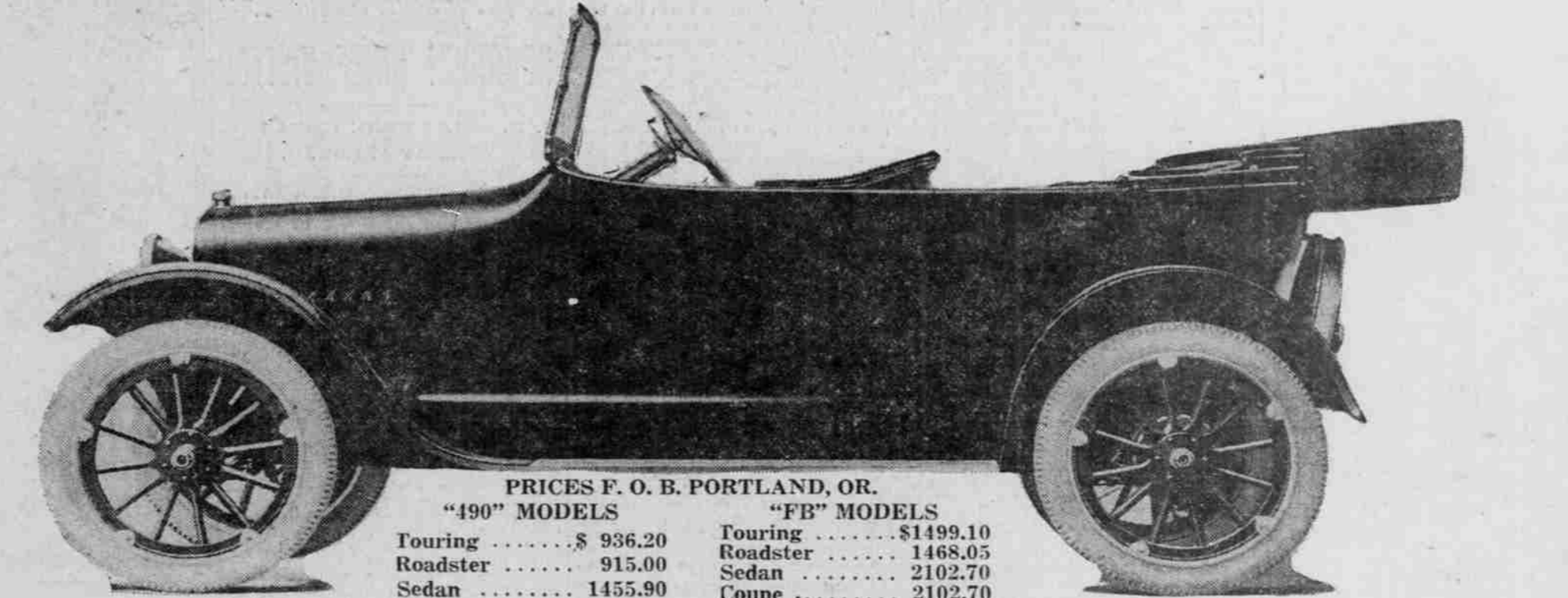
CHEVROLET satisfaction is universal; in all countries, under all conditions, in all branches of light car service, it has more than made good the various promises made by all who have to do with its manufacture, distribution and sale.

CHEVROLET in mileage and years of usefulness holds an enviable place in the world-

field of motor cars—just as in the Pacific Northwest its popularity has been earned wherever it has entered competitive service.

CHEVROLET Four Ninety Model is the lowest priced completely equipped car on the market.

CHEVROLET is manufactured by the General Motors Corporation, which accounts for its sturdy construction and low selling price.



PRICES F. O. B. PORTLAND, OR.

"490" MODELS	"FB" MODELS
Touring \$ 936.20	Touring \$1499.10
Roadster 915.00	Roadster 1468.05
Sedan 1455.90	Sedan 2102.70
Coupe 1377.60	Coupe 2102.70
	Delivery 918.05
	1-Ton Truck \$1515.50

Fields Motor Car Co.

Distributors for Multnomah County
Alder at Fourteenth Street
 Broadway 240

Don't crawl up to within a few inches of the car step. When a pedestrian does not or will not pay attention to your horn, remember that the deaf, hundreds of them, use the streets as well as you.

When you have an insane desire to speed, remember that the drivers you are passing have as much right to break the law as you have. Think of the sentiment you are thus creating and of the accidents that may happen by your hitting some other driver coming in from a side street or a pedestrian who does not see you coming, and think of the people in your own car who, perhaps, have a fear of speeding and are just trying

to be game by not letting you know it. "It is not sport to drive fast in the city. On the contrary, it is a rank discourtesy to your fellow motorists and fellow citizens."

"Do not open your cutout in the city. Remember, there are many ill persons whom such sounds greatly disturb. If you are inclined to open the cutout at night just think of some night when you were disturbed when trying to sleep by someone who drove by with the cutout open. Finally, when in doubt, be courteous enough to give the other fellow the benefit of the doubt."

Now Is the Time to **Paint** Your Automobile
 PHONE OR CALL FOR ESTIMATE
Robinson-Smith Co.
 Sixth at Madison.
 Main 1100.

Howell-Swift Tire Co.
 445-7 Stark Street
 Broadway 290
 Portland
 Factory Distributors
CANTON CORD and BLACKSTONE TIRES
 100 Per Cent QUALITY 100 Per Cent SERVICE
 100 Per Cent SATISFACTION

LEE LINE TRAILERS

Make Motor Truck operation profitable because they carry the "pay load." All capacities for all work.

William L. Hughson Co.
 Authorized Sales and Service - Since 1903.
 60 N. Broadway at Davis
 Broadway 321
 Oldest Motor Car Organization on the Pacific Coast
 San Francisco, Oakland, Los Angeles
 San Diego, Seattle, Portland