

SOUTHERN WRITER OREGON BOOSTER

San Francisco Editor Is Changed by Trip.

ARTICLE IS PUBLISHED

Pinkson Visits North and Then Advises All His Readers Likewise.

Leon J. Pinkson, automobile editor of the San Francisco Chronicle, was one of a party of San Francisco automobile editors who drove north over the Pacific highway to Portland about three weeks ago to get the real facts about highway conditions in Oregon.

BY LEON J. PINKSON. California motorists looking for new fields to conquer in the matter of automobile touring will do well to read their cards northward and make the trip over the Pacific highway to Portland.

The general impression has prevailed in California motorist circles that the Oregon roads are not conducive to a pleasant outing, but this is a huge mistake, for our sister state has awakened to the importance of good highways and is spending vast sums in building a creditable main trunk line to join her principal cities.

PACIFIC HIGHWAY NOTES. Interesting facts about Pacific highway from San Francisco to Portland, Or.: Total distance, 745.4 miles. Miles traveled in California, 358.4. Miles traveled in Oregon, 387.

on a pathfinding trip to the Oregon metropolis. A detailed inspection of the Pacific highway was made and the roads, in their present condition, were found to be in much better condition than has been reported by tourists who traveled the route in past seasons.

For the motorist who likes a snappy drive the 745 miles between San Francisco and Portland can be made comfortably in four days. This schedule provides for the first night's stop at Corning, 176 miles; Medford, Or., second night, 219.6 miles; Eugene, Or., third night, 183.3 miles; Portland, fourth night, 166.2 miles.

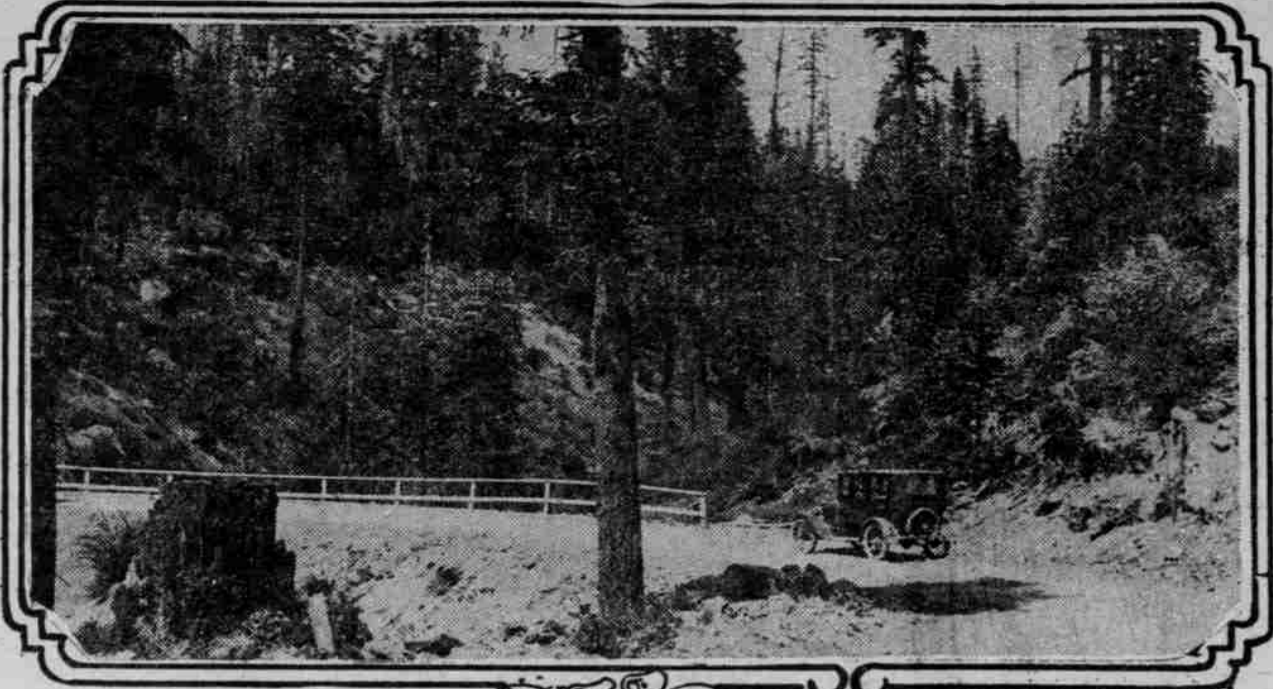
No Heavy Grades. No heavy grades are involved at any point on the journey and seldom will the driver be forced to use second speed. The condition is in marked contrast to those prevailing a year ago, especially so in Oregon, where until present grades were established, there were several "corkers," requiring about all the available power the average motor car possesses.

Weather Is Factor. Weather conditions in Oregon, where dirt roads exist, will govern the comfort of those pleasure hunters. If heavy rains are encountered there will be plenty of mud, and with the mud, of course, comes retarded speed and careful driving.

Two Miles of This Crushed Rock on the Columbia River Highway Just This Side of Hood River.

Now Is the Time to Paint Your Automobile. PHONE OR CALL FOR ESTIMATE. Robinson-Smith Co. Sixth and Madison, Main 1100.

ON THE PACIFIC HIGHWAY IN NORTHERN CALIFORNIA, NEAR SISSON.



ferent kind of scenic beauty from that to which he is accustomed to view in any part of his native state. The frequent rains coat the hills and valleys with a refreshing shade of green which he views only in the early spring.

Columbia Highway Praised. The Columbia river highway, beginning at Portland continuing almost to The Dalles, follows a course which parallels the Columbia river, rising at one point to nearly 800 feet above the river, dropping then to the water's level, and in succession rising and dropping to the river along a route which boasts of eight different waterfalls, the highest being Mutnomah fall, second in size of its water fall to Yosemite falls.

At what is regarded the summit—Crown Point—there is available a view for miles and miles, east and west of the Columbia river. The slight beggars a justifiable description. Its grandeur must be seen in order to properly comprehend the thrill it affords.

Business hours are the busy hours for the traffic cop. For the most part on evenings and Sundays he is off the job. This indicates better than any argument that the term "pleasure car" is a misnomer.

PEKIN MOTORING POPULAR CHINESE OWNERS EXCEED ANY OTHER CITY.

Number of Passenger Cars is About 650, Many Owned by American Manufacturers.

PEKIN, July 3.—Motoring is rapidly increasing in popularity in Pekin, where there are said to be more Chinese owners of cars than in any other city of China.

Through Chinese efforts the Pekin Motor club has been formed along the lines of similar organizations in Shanghai and Tientsin.

Two Miles of This Crushed Rock on the Columbia River Highway Just This Side of Hood River.

Now Is the Time to Paint Your Automobile.



The pavers have been held back by wet weather, so are about a month behind in paving the Columbia river highway from Cascade Locks to Hood River.



Between Sisson, which is almost under Mount Shasta, and Shasta Springs traverses the Pacific highway for much of the distance a beautiful wooded country of great fir trees.

PLEASURE CAR MISNOMER

MOST OF AUTOS ARE USED FIRST FOR BUSINESS.

Use for Other Trips Declared to Be Merely Incidental to Main Service.

"Business hours are the busy hours for the traffic cop. For the most part on evenings and Sundays he is off the job. This indicates better than any argument that the term 'pleasure car' is a misnomer.

TIRE TROUBLES VANISH DAYS OF WORRY RECALLED WHEN OWNERS TREMBLED.

Great Strides Made by Industry in Perfecting Casings of Various Types.

CARS COME HIGH ABROAD British Flivvers Bring \$4250, Good Auto Costs \$25,000.

The craze of motor car ownership has spread all over Britain, and persons who know nothing whatsoever about a car will pay any mad sum just to own one.

On their way to Boston, Mr. and Mrs. Joseph White reached Carson City, Nev., May 20, from California, claiming they were the first across the Sierras this season from Placerville via Kings Canyon road.

Now Is the Time to Paint Your Automobile.



Now Is the Time to Paint Your Automobile.

THROUGH CASCADES IS INTERESTING TRIP

Summer Journey for Autoists Attractive.

ROUTE IS FASCINATING

Run From Seattle Takes Party Through Irrigated Valley, One of Richest in World.

SEATTLE, Wash., July 4.—One of the most interesting summer automobile trips out of Seattle is across the Cascades to Wenatchee, center of an irrigated valley that ranks among the richest in the world.

The start from Seattle is made by way of Lake Washington boulevard, skirting the lake, though the distance can be varied by taking the highway across the lake to Kirkland, effecting a junction with the regular road at Redmond.

Among the outstanding points of interest along the route Snoqualmie Falls is the first reached. From the pass at altitude of 219 feet, the descent leads to Lake Keechelus, a broad expanse surrounded by snow-capped peaks.

Another instance is the purchased at a very special price (by which is meant a low one), of a 40-horsepower car, with a closed body, for \$25,000.

It sounds like a fairy story, but time was, and but a few years ago, when a motorist started out for a Sunday afternoon's ride with fear and tremblings, lest his tire should "blow" before he got back.

Today, however, the dependability and easy riding qualities of pneumatic permit him to start out without a single thought for his tires.

RACER AFRAID OF TAXICABS Andre Bollot Admits Drivers in Paris Have His Goat.

ASTORIA, July 3.—(Special)—The Clatsop county court is well pleased with the results attained in the paving of the Warrenton-Flavel road, the 17th paving done by the county's road-building department.

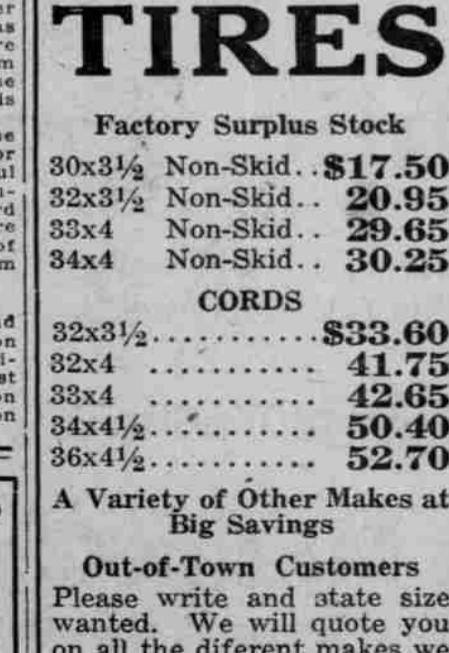
It is not obliged to labor in high to the point of stalling. Contrary to popular supposition, the engine will cool better if it is not obliged to labor excessively.

Andre Bollot Admits Drivers in Paris Have His Goat.

He doesn't turn a hair at driving a racing car 100 miles an hour—but he's afraid to ride in a Paris taxicab.

That's Andre Bollot, famous driver of the French Peugeot car at Indianapolis, brother of Georges Bollot, internationally known racer who was killed in the world war.

Now Is the Time to Paint Your Automobile.



Now Is the Time to Paint Your Automobile.

Advertisement for C. L. Boss Automobile Co. featuring a car and text: 'Hot Spot and Ram's-horn Improve Everything in a CHALMERS Even Its Beauty'. Includes a list of agents and a small logo.

when you found your engine over-heating? A slipping belt means the fan is going at a slower speed and does little cooling for the engine. Tighten up the belt every once in a while or ask a harness man to do it for you.

Go Into Intermediate. Difficult grades can be made with greater speed and less fuel in intermediate than if the engine is permitted to labor in high to the point of stalling.

Inspect Fan Belt. Did you ever look at your fan belt? Change oil every 500 miles.

A FAMILY WITHIN ITSELF

The General Motors Corp. CAPITALIZED AT OVER \$1,000,000,000

MANUFACTURERS OF THE SCRIPPS-BOOTH

WE SELL the Scripps-Booth SERVICE the Scripps-Booth FINANCE the Scripps-Booth

All purchasers of Scripps-Booth Motor Cars on the time-payment plan have the advantage of financial aid through the General Motors Acceptance Corporation.

There is but one profit on the Scripps-Booth. Our one aim is and all our efforts are bended toward making SATISFIED OWNERS

There is no Scripps-Booth agency in Portland. You are dealing with a Branch House when you buy a Scripps-Booth from

The Scripps-Booth Co., of Calif. 522 Alder at Sixteenth PORTLAND BRANCH Bdw. 3169