

MINIUM FINE HOMES BUILT THIS SPRING

Total With Flat Buildings Reach \$1,819,845. RECORDS ARE VIEWED

Period From January 1 to June 19 Spanned in Estimate—Westover Terraces Get Many.

Portland, for many years known as the home city of the Pacific coast, has added materially to its large number of handsome dwellings this spring...

Perhaps the greatest home-building activity of this class has been on Westover Terraces, where more than 200,000 sq. ft. of high-class residential sections has witnessed some building of this nature...

Report Made at Session. At a recent session of the National Association of Real Estate Boards at Kansas City a report of the International Realty associates...

Harold Jungck, secretary of the company and in charge of local development, made a report which was well received...

Other sections along the heights have witnessed excellent development this year. Several new homes of the highest type have gone up...

New Homes Built Elsewhere. In Irvington, Alameda, Laurelhurst and East and Westmoreland homes have added materially to the beauty and usefulness of the localities...

From every standpoint the home-building developments in Portland since the first of the year have been highly encouraging and point the way to solution of the housing problem...

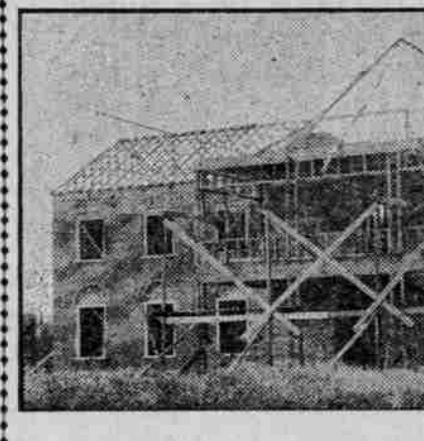
SECRETARY SENT TO GET 1921 NATIONAL CONVENTION. Minneapolis Meeting to Be Asked to Select Portland Since Coast Has Been Neglected Long.

Portland will be the choice for the 1921 convention of the national association of building owners and managers...

active members of the association are taking an active part in Shrine activities and thus are unable to attend the Minneapolis session.

PORT DEVELOPMENT NEEDED. Realty Board Urges All Members to Sign Petition.

CORNER STONE OF NEW BABIES' HOME BUILDING WILL BE LAID TODAY.



New Albertina Kerr nursery, at the corner of Sandy boulevard and Oregon street...

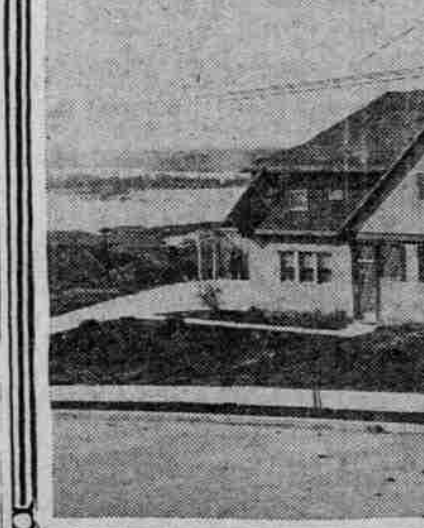
circulation and that all necessary signatures must be secured by July 1. The board urges all members to sign the petition...

TWO RANCH SALES COMPLETED. Idaho Purchaser Takes Ten-Acre Tract as Investment.

PROSSER, June 19.—(Special).—The Central Yakima Ranches company reports two sales completed Monday.

James A. Wright from Astoria, Wash., brought the J. H. Cook 10-acre six miles west of Prosser. This 10 acres is one of the best of the district...

PORTLAND, THE CITY OF HOMES, SEES MANY SCORE OF HANDSOME DWELLINGS ERECTED WITHIN ITS LIMITS DURING THE SPRING OF 1920.



Group of English type homes, built this spring or now in process of construction, of the type for which Portland is famous throughout the length and breadth of the land...

REALTOR PRESIDENT TO MAP YEAR'S WORK

Fred E. Taylor Home From National Association Meet.

280 BOARDS ARE UNITED. Constructive and Practical Work Planned by New Officials to Benefit Public in Many Ways.

Primed with new ideas and comprehensive plans for an active year in the interest of the realty profession, Fred E. Taylor, president of the P. E. Taylor Co., returned to Portland on Thursday from Kansas City...

Senator Harding Interviewed. Although conscious of the signal honor which has been paid him Mr. Taylor interprets his election as a recognition of the splendid work being done by the Inter-State Realty association...

Leading Realtors to Visit Portland. Frequently during the year the leading men of the country in the realty profession and allied lines of business will visit Portland to discuss important topics with Mr. Taylor...

\$40,000 PAID FOR 162 ACRES. New Owner Will Go Extensively Into Dairy Cattle.

An important deal in Washington county farm property was closed last week in the transfer of the William H. Lyda farm of 162 acres, located five miles north of Forest Grove...

Portland, the city of homes, sees many score of handsome dwellings erected within its limits during the spring of 1920.



Group of English type homes, built this spring or now in process of construction, of the type for which Portland is famous throughout the length and breadth of the land...

100 HOME PLANS GIVEN CITY AIDING IN ERECTION OF INEXPENSIVE HOMES.

Campaign Expected to Result in Extensive Construction of Residences During Summer.

More than 100 sets of plans for inexpensive houses, such as are recommended by the city building bureau of the department of public works for erection at this time to relieve the housing shortage...

Under the ordinance passed by the city council to further the campaign much cheaper construction than was heretofore allowed is permitted within the city. However, the dwellings will be altered within two or three years to come up to the specifications generally demanded.

Design "C" is an attractive little one-story house, measuring 25 by 22 feet on the exterior. The rooms provided are a living room 10 by 15 feet, bedroom 7 feet 9 inches by 10 feet 6 inches, kitchen 7 by 10 feet 6 inches, bathroom 5 feet 6 inches by 7 feet, and a small front porch and small back porch.

Concrete work for foundation, 124.10; chimney, \$29; rough fir lumber, \$82.58; nails, \$5.06; roof boards, \$14; flooring, \$41.92; cedar shingles, \$35.75; siding, \$55.15; other finishing lumber, \$12.24; millwork, including doors, windows, frames, etc., \$150; sheet metal, \$13.14; painting, \$80; hardware, \$14.89; labor, rough carpentry \$45, finish carpentry \$55, total \$100.

Second—Primary cost \$655.30; plaster work, finish, \$72.50; complete plumbing, including connections to sewers and main, toilet, sink, water tank, bath tub and all piping, \$22.50; sheet metal, \$18.14; electric wiring, \$30; total for finishing, \$458.14; total for house, \$1113.44.

House selling by the cafeteria plan is the way Kansas City newspapers characterized the Frank L. McGuire system, which was explained by Mr. McGuire at one of the important conferences at the recent Kansas City convention of the national association of real estate boards.

McGuire was the speaker, with some 500 real men present as listeners. He explained his house selling system, by which he probably made a record of house sales last year, which was a record throughout the United States...

HOUSE SALES EXPLAINED

McGUIRE SYSTEM CALLED "CAFETERIA" PLAN. Portland Realtor Is Speaker at Convention of Estate Boards in Kansas City.

House selling by the cafeteria plan is the way Kansas City newspapers characterized the Frank L. McGuire system, which was explained by Mr. McGuire at one of the important conferences at the recent Kansas City convention of the national association of real estate boards.

5 minutes from Broadway

We Build The Shriners "Shrine" His "beautiful home"

—And on the world-known, famous Westover Terraces are being built today splendid homes—homes of the character that you desire as surroundings for your own home.

See Portland From Westover Terraces

It is only five minutes from Broadway, but as your motor swings over its gently sloping, wide boulevards, there unfolds the incomparable vista of 10,000 square miles of wonderland.

Buy Your Site Now on the Terraces

Less than 100 sites remain. Each gives you an unobstructed view of the great sweep of the city, mountains, valleys and rivers.

Our beautifully illustrated booklet mailed on request.

For Whatever Information You May Desire Just Phone, Write or Call On HAROLD JUNGCK, SECRETARY INTERNATIONAL REALTY ASSOCIATES, OWNERS 1307 Yeon Building Phone Marshall 630; Res. East 1999 Also for Sale by Any Realty Board Member

WESTOVER TERRACES

Portland's Best View Homesites

Why not select your site now? You can buy on easy terms and we will help you build.



How to Get to Westover by street car: Take an out-bound 23d Street car on Washington. Transfer to Westover car.

5 minutes from Broadway

We Build The Shriners "Shrine" His "beautiful home"

—And on the world-known, famous Westover Terraces are being built today splendid homes—homes of the character that you desire as surroundings for your own home.

See Portland From Westover Terraces

It is only five minutes from Broadway, but as your motor swings over its gently sloping, wide boulevards, there unfolds the incomparable vista of 10,000 square miles of wonderland.

Buy Your Site Now on the Terraces

Our beautifully illustrated booklet mailed on request.

For Whatever Information You May Desire Just Phone, Write or Call On HAROLD JUNGCK, SECRETARY INTERNATIONAL REALTY ASSOCIATES, OWNERS 1307 Yeon Building Phone Marshall 630; Res. East 1999 Also for Sale by Any Realty Board Member

WESTOVER TERRACES

Portland's Best View Homesites

Why not select your site now? You can buy on easy terms and we will help you build.



How to Get to Westover by street car: Take an out-bound 23d Street car on Washington. Transfer to Westover car.

5 minutes from Broadway

We Build The Shriners "Shrine" His "beautiful home"

—And on the world-known, famous Westover Terraces are being built today splendid homes—homes of the character that you desire as surroundings for your own home.

See Portland From Westover Terraces

It is only five minutes from Broadway, but as your motor swings over its gently sloping, wide boulevards, there unfolds the incomparable vista of 10,000 square miles of wonderland.

Buy Your Site Now on the Terraces

Our beautifully illustrated booklet mailed on request.

For Whatever Information You May Desire Just Phone, Write or Call On HAROLD JUNGCK, SECRETARY INTERNATIONAL REALTY ASSOCIATES, OWNERS 1307 Yeon Building Phone Marshall 630; Res. East 1999 Also for Sale by Any Realty Board Member

WESTOVER TERRACES

Portland's Best View Homesites

Why not select your site now? You can buy on easy terms and we will help you build.



How to Get to Westover by street car: Take an out-bound 23d Street car on Washington. Transfer to Westover car.

REDIMADE Sectional House

The Kind You'll Like to Own. Permanent houses made of 4-foot standardized sections. Easy to erect. We erect them in Portland. Ship them anywhere. See our Shrine Model at Sixth and Yamhill. REDIMADE BUILDING CO., PORTLAND, OR. EAST 11TH AND MARKET. WRITE FOR CATALOG.