

LOOK AT YOUR TIRES BEFORE LONG TRIPS

All-Around Inspection Can Save Much Money.

SPRING INVITES JAUNTS

Sleeves, Blowout Patches and Plastic for Plugging Holes Are in Use More Than Ever.

Spring is with us again. Even more authentic as a harbinger than the groundhog, the first robin, or the pussy-willow is the annual tuning up of motors and the overhauling of last year's "little ol' bus."

From now on motorists will be taking the road in ever increasing numbers, but they should make sure before taking the first spring "jaunt" that they have given their tires and taken a thorough inspection.

To repair the engine, clean the fenders, shine up the body, clean the lamps, and put the car in "apple-pie" order without inspecting the tires is the mistake made by too many motorists. An all-around tire inspection by each of America's 7,000,000 car owners would result in a saving amounting into millions of dollars in the annual national car mileage.

Tire sleeves, blowout patches, and plastic for plugging holes are being used on a far greater scale than ever before in the history of motoring. Notwithstanding the increased use of tire repair material, altogether too few auto owners are practicing tire conservation. Ignoring tires in want of care and repair is parallel to allowing a leak in the gas tank to go unattended. Extra means "extra" miles in the long run.

All Roads Are Hard.

Motorists should remember that even with the best of care tires have a hard road to follow. The greater part of it is that they last as long as they do. Day after day they are subjected to the hardest and roughest yet they continue to give good service. It is only when they are abused beyond all reason or when carelessly neglected that they go to pieces.

More damage to tires is caused by running them underinflated than by any other single abuse. It might well be said that under-inflation is the "white plague" of the pneumatic. A few hundred miles with improper pressure and more damage is done to the tire than would be done in several thousand miles under proper conditions. The side walls of the tire break down, the plies of the fabric are pulled apart, and the rubber loses its resiliency. Within a short time the tire becomes flat, wavy and out of shape. Another condition commonly resulting is rim cutting. There are unquestionably more tires ruined from this practice than from any other cause.

Skidding is another cause for serious damage to tires. Great patches of tread are often rasped from the tire by this abuse, much as though it had been held against a grindstone. Sometimes even several plies of fabric are worn through. A little care in applying brakes will effectively prevent skidding and the resulting injuries to the tires.

Get Small Cuts Early.

Improper treatment of minor injuries to tires often causes serious trouble. Motorists often place emergency bands or protection patches over cuts and punctures and then forget all about them. In nine cases out of ten serious injury to the tire results and the motorist wonders why. The answer of course is that the tire should have been permanently repaired when first injured. The emergency bands and protection patches are made for temporary service and cannot be expected to be used permanently.

Running in streetcar tracks ruins the best of tires quickly. The constant grind on the side walls of the tire wears away the rubber and leaves the fabric exposed, making early destruction of the tire certain. It should be borne in mind by motorists that even though the car runs smoother on the rails than on rough pavements, the cost is many times greater. Streetcar tracks are made for streetcars to run on—not automobiles.

Injuries similar to those caused by running in car tracks may be caused by running in deep ruts or on muddy roads which have a frozen crust insufficient to bear the weight of the car. The rubber side walls are worn away and the fabric becomes worn and blistered. No tire will stand the rough treatment. The sides will be rubbed and gouged away long before the tread is even slightly worn.

At this season of the year the motorist should take particular care to see that the wheels of his car are in perfect alignment. Running over rough pavements and in ruts quickly throws the tires out of line, and unless proper adjustments are made the tire will be soon ruined. The tread becomes worn through to the fabric in a remarkably short time. By taking the car to a dealer and having the wheels checked up it will be possible very likely save himself future trouble and expense.

MOTOR INDUSTRY HARD HIT

Plants Begin to Lay Off Men—At Detroit 40,000 Idle.

WASHINGTON, May 21.—A serious crisis is facing the motorcar industry of the country as a result of the tie-up in transportation. Already, as a result of their inability to get raw material, their inability to make deliveries, and last, but not least, the refusal of the banks to extend them further credit until their past borrowings are liquidated, plants in all the large motorcar manufacturing centers are beginning to lay off men. Reports from Detroit, the hub of the industry, indicate that 40,000 men in that city are idle now. To a lesser extent the same is true of Cleveland, Toledo and other centers of the trade.

TRUCKS GET SHORT HAULS

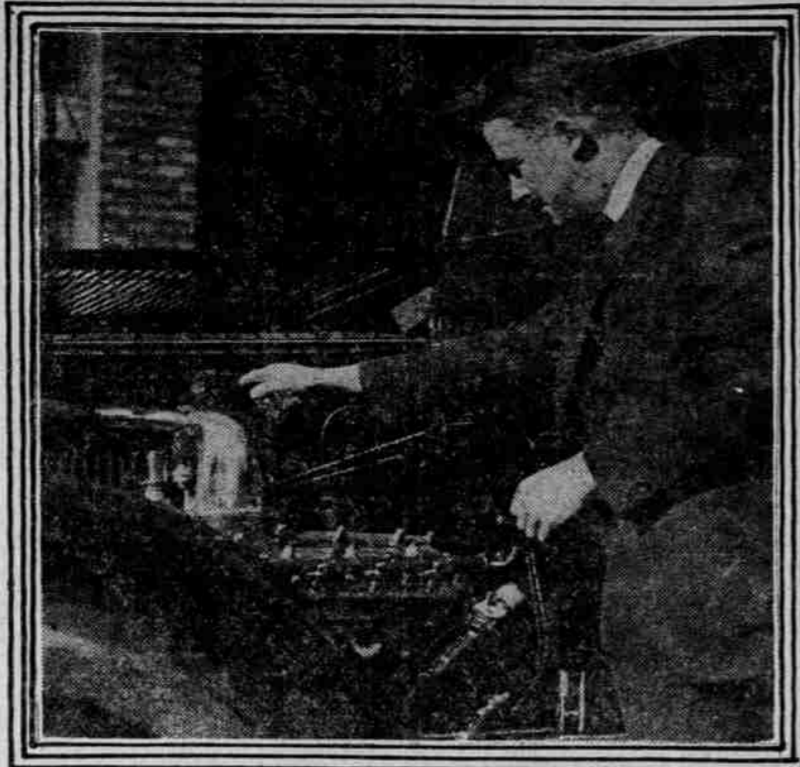
Change Rapidly Taking Place as Highways Are Improved.

WASHINGTON, D. C. May 23.—Much of the "short haul" will shift to the new owner in the transportation field—the motor truck—as highway construction becomes of such character as to make highway rate-making practical.

This was the view expressed by Congressman Egan, chairman of the Interstate and Foreign Commerce committee, and author of the railroad bill, in speaking at a highway transportation conference here recently.

The change will be to the economic advantage of the railway and the general public as well, he added. Motorists in England consume approximately 200,000,000 gallons of motor spirits a year.

NEW FUELIZER MAKES PACKARD CARS INDEPENDENT OF WEATHER CONDITIONS.



12 AUTOS ARE MISSING

POLICE REQUEST CITIZENS TO WATCH FOR THEM.

If You See One of These Cars, Hit the Telephone and Notify Auto Theft Bureau.

Two Chandlers, two Chevrolets, two Dodges, two Maxwells, two Fords and one Buick and one Overland are on the unrecovered list this week of the new auto theft department of the Portland police bureau.

Here is the full description of each missing car, as compiled by Lieutenant Harvey Thatcher, in charge of the auto theft department, who requests that any person having information about any one of the cars notify his department at once:

Chandler—1917 touring, Oregon license No. 265144.

Chevrolet—1919 touring, Oregon license No. 23119, motor No. C2318, factory No. 24928, black.

Chevrolet—1918 touring, Oregon license No. 17597, motor No. B496.

Chandler—1918 touring, Oregon license No. 82149, motor No. 54579, blue-black body.

Chandler—1920 roadster, Oregon license No. 71997, motor No. 85570, black.

Dodge—1918 touring, Oregon license No. 21678, motor No. 39906, factory No. 30849, black.

Dodge—1920 touring, Oregon license No. 82998, motor No. 50948, black.

Ford—1919 roadster, Oregon license No. 15787, motor No. 3042796, black.

Ford—1919 touring, Oregon license No. 20146, motor No. 3042796, black.

Maxwell—1918 touring, Oregon license No. 38624, motor No. C6667, factory No. 23292, black.

Overland—1917 touring, Oregon license No. 47763, motor No. 21670.

AUTOS SMASH; HEN LAYS

Three-Cornered Wreck; Biddy in Tonneau Heeds Duty's Call.

Three motor cars were badly smashed up and an egg was laid in an automobile accident that took place through a mistake in traffic signals at West End avenue and Eighty-sixth street, New York, a few days ago.

The egg was laid by a hen that George Degnan of Toga, N. Y., was carrying in a coop in the tonneau of his car. What inspiration the fowl found in the crash has not yet been determined.

Degnan was driving south on West End avenue and struck a car operated by Iva B. Schlichter, 5000 Broadway, as it crossed West End avenue, facing west. Schlichter's machine was thrown into the eastbound car of Dr. Philip Houston, 123 Waverly place.

Degnan's auto had the left front wheel smashed and both fenders and hood crumpled up. Schlichter's car had the entire left side crushed in and Dr. Houston's right side badly damaged. No one was injured and the egg was not even cracked.

ALBANY TO GET NEW GARAGE

Four Buildings Fail to Meet Needs of Growing Business.

ALBANY, Or., May 29.—(Special.)—Though four large, modern garages were erected in Albany during last summer and the past winter, the growth of the automobile business here is such that another new, modern garage is to be erected here in the next few weeks. It will be erected at the southeast corner of Fourth and Lyon streets, just opposite the Albany armory, and will be built by John Wills, owner of the property on that corner. The new garage will be

CLOSE QUARTERS ON THE UMPQUA RIVER CUTOFF TO CANYONVILLE.



This cutoff route on the Pacific highway in southern Oregon eliminates the town of Biddle and saves a couple of miles into Canyonville, at the head of Cow creek canyon. The cutoff road is very narrow and follows closely the edge of the Umpqua. The highway commission has selected this as the future main highway route, but the people of Biddle are fighting this in court.

The Specially Built Over-size Tire for Fords, Chevrolets, Maxwells & others with 30x3 1/2 Rims.

Air space! If you want to know what the "31x4" air space in the Jumbo means to you, ride over a rough cobblestone pavement in a Ford equipped all around with Jumbos.

Some people think of an over-size tire as simply having more rubber outside. The Jumbo is larger outside AND inside—it is the greatest shock absorber you can put on a car.



In addition to having that big "31x4" air space, the Jumbo has a "31x4" tread. This tire is a "31x4" in every point but one. The difference between the Jumbo and a regular 31x4 is in the fabric construction. 31x4 tires, as a rule, have five plies. The Jumbo has four plies that are the highest quality fabric—Sea Island, guaranteed—the best that can be built into a tire. This special four-ply construction gives the Jumbo a carcass of extra strength without extra thickness—another feature adding to the resiliency of this tire. The Jumbo gives you MORE than the tensile strength needed to carry your car, and plus that, it gives your car air cushioning to the greatest degree possible.

To all practical purposes, the Jumbo gives you "31x4" service without "31x4" expense.

This tag is on every Jumbo Tire

THE GENERAL JUMBO TIRE

—goes a long way to make friends

AMERICAN TIRE & RUBBER CO. Broadway and Oak "On the General Corner" BDWY. 180 TWO PHONES—If One Is Busy, Use the Other BDWY. 2300

Built in Akron, Ohio, by The General Tire and Rubber Co.

turntable and give it two doors, front and back, so that after the car has been driven in the garage it swings around and the vehicle may be driven out forward instead of being backed out.

EAGER FOR BETTER ROADS

Growing Fleets of Farm Trucks Arouse Strong Demand.

Observers are said to regard it as significant that the states which will spend most freely for better highways and which manufacturers depend upon to buy the most motor trucks in 1920 are states in which farming is the predominant occupation. It is estimated that Kansas, which will spend \$5,000,000 on road improve-

ment, will buy 20,000 motor trucks this year. Minnesota has a road-building programme calling for the expenditure of \$11,127,986. As an illustration of what the farmer in that state thinks of the motor truck a statement recently issued by the Northwestern National bank in Minneapolis might be cited, in which it is said that "trucks in large numbers, intended for immediate use in marketing grain, are being sold to farmers." Eleva-

tor scales in many places are being remodeled to accommodate the growing fleet of farmers' trucks. Iowa, potential buyer of many motor trucks, will spend \$20,498,534 on better highways.

Mikado Buys Two Essex Cars.

The imperial household of Japan has just purchased two Essex cars in addition to the seven Hudsons they already own. The extent to

which American cars are used in the far east is shown by the fact that there are now more than 400 Hudson and Essexes alone in service in the land of the mikado.

Air Leaks and Misfiring.

Air leaks are a common cause of misfiring, though they are often overlooked. A worn valve guide allows enough air to be sucked into the cylinder to cause misfiring, and

it also permits oil to leak out. If oil is discovered leaking out it is fair to assume that excess air is being injected into the fuel charges.

Extracted Teeth With Fingers.

The early dentists of China used to pull teeth with their fingers. They practiced by pulling pegs from a wooden board until they had a pain low enough air to be sucked into the cylinder to cause misfiring, and

Automobile Painting
ALL WORK GUARANTEED.
CORNELL & CO.
Incorporated.
Temporary Location
964 THURMAN STREET,
Marshall 596.

Automobile Agency For Sale
Handling an old-established standard medium priced car; will sell at invoice plus \$2500. Sales over \$100,000 per year with small overhead.
Address AV 877, Oregonian.

Howell-Swift Tire Co.
445-7 Stark Street
Broadway 290
Portland
Factory Distributors
CANTON CORD and BLACKSTONE TIRES
100 Per Cent QUALITY 100 Per Cent SERVICE
100 Per Cent SATISFACTION