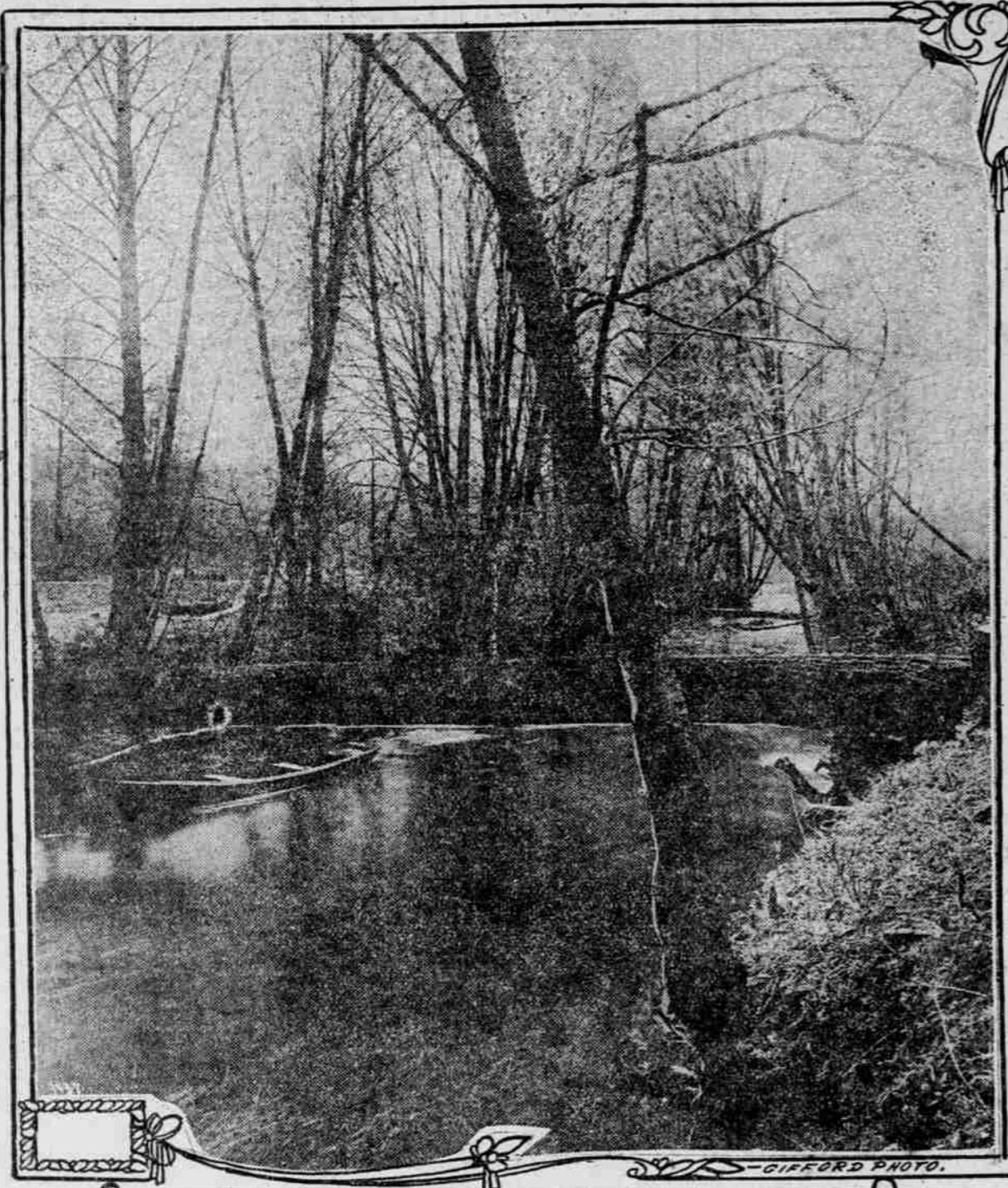


MOUNT M'LAUGHLIN'S STREAMS AND LAKES MAKE LAND OF ROGUE INTERESTING SECTION

Network of Waterways, Many of Them Nameless, Carefully Studied and Classified in Order to Present Basis for Oregon History That Should Interest



Yamhill River Near Dayton.

This is the 14th of a series of articles by Mr. Bennett on Oregon waterways... The 15th will follow at an early date... The first named branch going up stream on the left is Rhodes creek...

LEW CODY IS CONSIDERED ORIGINAL SCREEN 'HE VAMP'

'Free Lance' Career Followed by Star Who Seldom Stayed at Any One Studio for More Than One or Two Years... 'Yes, girls, it's Lew Cody—himself in person. To all of you who have admired him in the films—Evelyn Keenan's 'The Girl in the Red Velvet Shoes'—these revelations will prove intensely interesting...

BY RAY W. FROHMAN. (Copyright, 1920, by Herald Publishing Company.)... 'B'Y rights, to get the full 'kick' out of the affair, a lady should have interviewed Lewis J. Cody. But it's all right. A dozen or so did while I was probing for his raison d'etre; the motivating force behind him...

deliberate, professional 'he-vamp' who capitalizes his vampiness... They do say that Lew is a regular honey bee. If kisses be like pickles and have 57 varieties, Lew invented at least 15 of them...

Next week I will take up the streams below the junction of the south and middle forks of the Coquille up to the north fork which flows into the main river one mile north of Myrtle Point.

Next week I will take up the streams below the junction of the south and middle forks of the Coquille up to the north fork which flows into the main river one mile north of Myrtle Point.

Next week I will take up the streams below the junction of the south and middle forks of the Coquille up to the north fork which flows into the main river one mile north of Myrtle Point.

Next week I will take up the streams below the junction of the south and middle forks of the Coquille up to the north fork which flows into the main river one mile north of Myrtle Point.

Next week I will take up the streams below the junction of the south and middle forks of the Coquille up to the north fork which flows into the main river one mile north of Myrtle Point.

Next week I will take up the streams below the junction of the south and middle forks of the Coquille up to the north fork which flows into the main river one mile north of Myrtle Point.

Next week I will take up the streams below the junction of the south and middle forks of the Coquille up to the north fork which flows into the main river one mile north of Myrtle Point.

GOOD SAMARITAN NURSES WILL SEE CIRCUS ON INVITATION OF MISS BESSIE HARVEY

Prima Donna of Show Will Again Greet Friends Made While Patient in Hospital Here for Several Months as Result of Accident During Circus Parade Last Year.



Miss Harvey Ready For Parade

WHEN the Al G. Barnes circus spreads its big top in Portland tomorrow for a two-day engagement, it will have as a personal interest for many local folk, inasmuch as Miss Bessie Harvey, prima donna of the show, will again head one of the big feature acts...

Next week I will take up the streams below the junction of the south and middle forks of the Coquille up to the north fork which flows into the main river one mile north of Myrtle Point.

Next week I will take up the streams below the junction of the south and middle forks of the Coquille up to the north fork which flows into the main river one mile north of Myrtle Point.

Next week I will take up the streams below the junction of the south and middle forks of the Coquille up to the north fork which flows into the main river one mile north of Myrtle Point.

Next week I will take up the streams below the junction of the south and middle forks of the Coquille up to the north fork which flows into the main river one mile north of Myrtle Point.

What You Will Be Tomorrow Depends Upon What You Do For Your Health Today

You Must Keep Your Blood Filled With Iron to Stand the Strain of Modern-Day Life Says Physician; Explains How. Nuxated Iron Helps Build Red Blood. Strength and Endurance.



Accept 'California' Syrup of Figs only—look for the name California on the package, then you are sure your child is having the best and most harmless physic for the little stomach, liver and bowels. Children love its fruit taste. Full directions on each bottle. Write direct to 'California'—Adv.

Next week I will take up the streams below the junction of the south and middle forks of the Coquille up to the north fork which flows into the main river one mile north of Myrtle Point.