

FORD INTERESTS IN BIG FINANCIAL DEAL

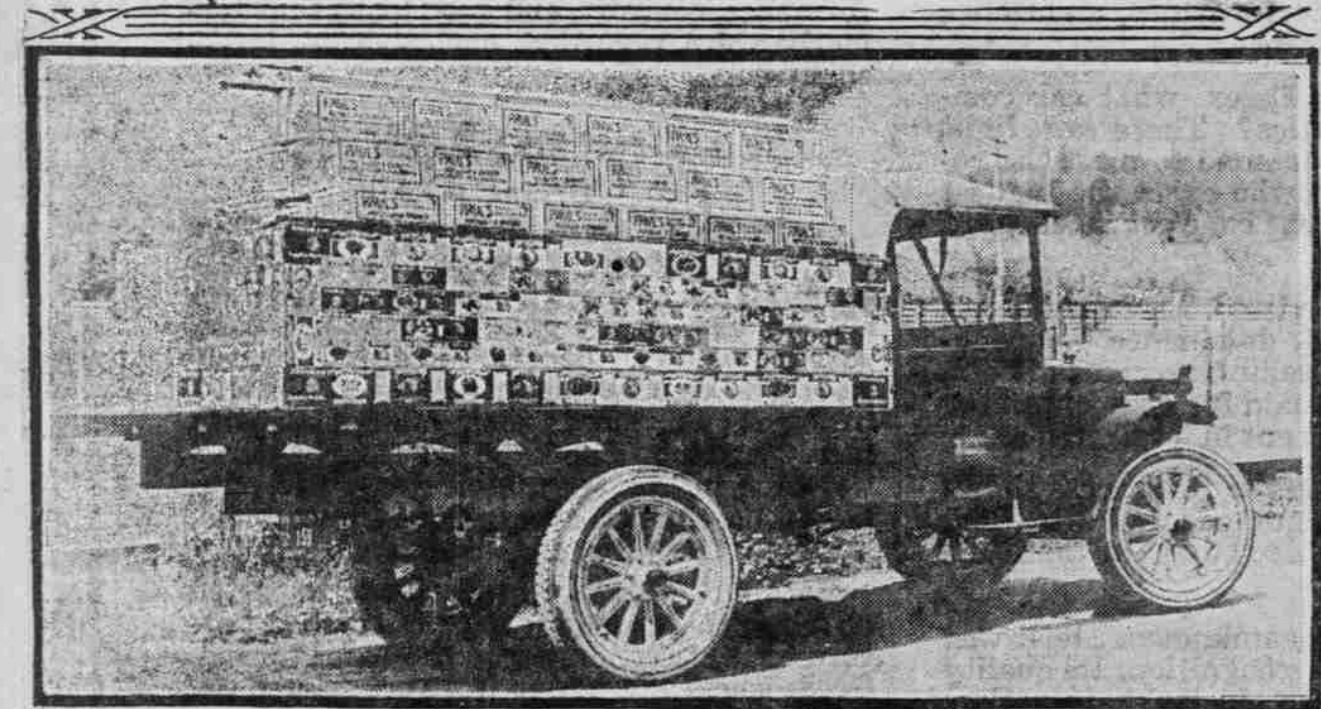
Huge New \$100,000,000 Corporation Is Formed.

BUT NO STOCK IS FOR SALE

Tractor and Automobile Interests Combined Under Arrangement Just Made.

DETROIT, May 8.—That the Ford automobile and tractor interests are to be combined and reincorporated as a \$100,000,000 Delaware corporation was indicated last week by papers submitted to the secretary of state.

"MOTORIZE THE FARM" TOUR ADVERTISES WASHINGTON PRODUCTS.



One of the entries in the second Motorize-the-Farm tour by Seattle and Tacoma dealers, photographed in Puyallup last Monday, the first day of the run.

will permit it to engage in the manufacture of aircraft, internal combustion locomotives and railroad cars, and all manner of devices used for getting from place to place, as well as to carry on the automobile, truck and tractor business now conducted by the Ford Motor company and the Henry Ford & Son corporation.

The reason for incorporating under Delaware laws is that Michigan does not permit more than \$25,000,000 capital stock. The capital stock of the new company probably will be held by the incorporators of the Henry Ford & Son corporation, Henry Ford, Edsel B. Ford and Mrs. Henry Ford.

State to Get Big Fee. Michigan, however, will receive a record-breaking fee when the reorganization is completed.

The present capital of the Ford Motor company is \$2,000,000, paid in cash, property and patents. The capital of the Henry Ford & Son corporation is \$1,000,000, paid in cash.

Gray Car Announced. The Gray Motor company of Detroit forms the nucleus of a new \$4,000,000 organization known as the Gray Motor corporation, which will produce a four-cylinder, 20-horsepower passenger car.

It is planned to produce 20,000 cars annually, upon which production the management estimates net earnings of over \$2,000,000 after full allowance for taxes and depreciation.

New Plant for Columbia. Columbia Motors company, which recently increased its capital stock from \$500,000 to \$1,000,000 through a 700 per cent stock dividend, is having plans prepared for a large factory.

The new plant will be erected on a site fronting 400 feet on Fort street.

BEWARE DEADLY FUMES

EXHAUST FROM ENGINE CONTAINS CARBON MONOXIDE. Motor Should Never Be Operated in Small Garage, for Death May Result.

Specific instances where deaths have resulted from inhaling poisonous exhaust gas fumes from motor engines in close garages are set forth in a recently issued bulletin of the United States interior department.

Two cases are cited in which men were found dead on the floors of their garages, and one in which a man and his wife were overcome, the woman sitting stiff in the car, the man leaning over the door.

These accidents are traceable to poor combustion and the presence of carbon monoxide, a poisonous gas, in the exhaust gases. Carbon monoxide is formed when gasoline vapor, or any other fuel, is burned without enough air (oxygen) for complete combustion.

Both courts are waiting to see what the highway commission will do in regard to the selection of a permanent route for the main trunk of the Pacific highway, whether it will continue to extend through Harrisburg or

HOOD RIVER, OR., MAY 8.—(Special.)—While two shifts of men have been placed at work at the Sonny paying plant, G. E. Kibbe, contractor in charge of surfacing the Columbia river highway between here and Wyeth, says that the route will be open to traffic at certain hours.

Mr. Kibbe gives the following schedule of hours during which traffic will be permitted over the road:

Between 12 noon and 12:30 P. M.; between 4 and 4:30 P. M.; between 2 and 2:30 P. M. and between 1:30 and 7 A. M.

With good weather, the paving of the eight miles of unsurfaced road between Wyeth and the city limits will be rushed.

Burning Out Coal. When the spark gap of a plug is too great, so that the current cannot jump the gap, there is danger of burning out the secondary wire of the coil through heat caused by the great resistance.

Wheel balance is something that the careful car owner likes to have just right, as the racing drivers also do. To get this take the tire off and note whether the bare wheel balances or if some section has a tendency to roll around to the bottom.

When the wheel balances without the tire put the casing on and adjust the bearings so that the weight of the valve stem assembly will just overbalance the rest of the wheel.

Garages should preferably be large and well ventilated, and when the engine is running in the garage it is best to have the automobile standing close to wide-open doors.

No means should an engine be run so as to produce a smoky or bad-smelling exhaust in a small garage.

Garages should preferably be large and well ventilated, and when the engine is running in the garage it is best to have the automobile standing close to wide-open doors.

No means should an engine be run so as to produce a smoky or bad-smelling exhaust in a small garage.

Garages should preferably be large and well ventilated, and when the engine is running in the garage it is best to have the automobile standing close to wide-open doors.

No means should an engine be run so as to produce a smoky or bad-smelling exhaust in a small garage.

Garages should preferably be large and well ventilated, and when the engine is running in the garage it is best to have the automobile standing close to wide-open doors.

No means should an engine be run so as to produce a smoky or bad-smelling exhaust in a small garage.

Garages should preferably be large and well ventilated, and when the engine is running in the garage it is best to have the automobile standing close to wide-open doors.

No means should an engine be run so as to produce a smoky or bad-smelling exhaust in a small garage.

Garages should preferably be large and well ventilated, and when the engine is running in the garage it is best to have the automobile standing close to wide-open doors.

No means should an engine be run so as to produce a smoky or bad-smelling exhaust in a small garage.

Garages should preferably be large and well ventilated, and when the engine is running in the garage it is best to have the automobile standing close to wide-open doors.

No means should an engine be run so as to produce a smoky or bad-smelling exhaust in a small garage.

Garages should preferably be large and well ventilated, and when the engine is running in the garage it is best to have the automobile standing close to wide-open doors.

No means should an engine be run so as to produce a smoky or bad-smelling exhaust in a small garage.

Garages should preferably be large and well ventilated, and when the engine is running in the garage it is best to have the automobile standing close to wide-open doors.

No means should an engine be run so as to produce a smoky or bad-smelling exhaust in a small garage.

Garages should preferably be large and well ventilated, and when the engine is running in the garage it is best to have the automobile standing close to wide-open doors.

No means should an engine be run so as to produce a smoky or bad-smelling exhaust in a small garage.

Garages should preferably be large and well ventilated, and when the engine is running in the garage it is best to have the automobile standing close to wide-open doors.

No means should an engine be run so as to produce a smoky or bad-smelling exhaust in a small garage.

Garages should preferably be large and well ventilated, and when the engine is running in the garage it is best to have the automobile standing close to wide-open doors.

No means should an engine be run so as to produce a smoky or bad-smelling exhaust in a small garage.

Garages should preferably be large and well ventilated, and when the engine is running in the garage it is best to have the automobile standing close to wide-open doors.

No means should an engine be run so as to produce a smoky or bad-smelling exhaust in a small garage.

Garages should preferably be large and well ventilated, and when the engine is running in the garage it is best to have the automobile standing close to wide-open doors.

No means should an engine be run so as to produce a smoky or bad-smelling exhaust in a small garage.

Garages should preferably be large and well ventilated, and when the engine is running in the garage it is best to have the automobile standing close to wide-open doors.

The Tire That Stands Up

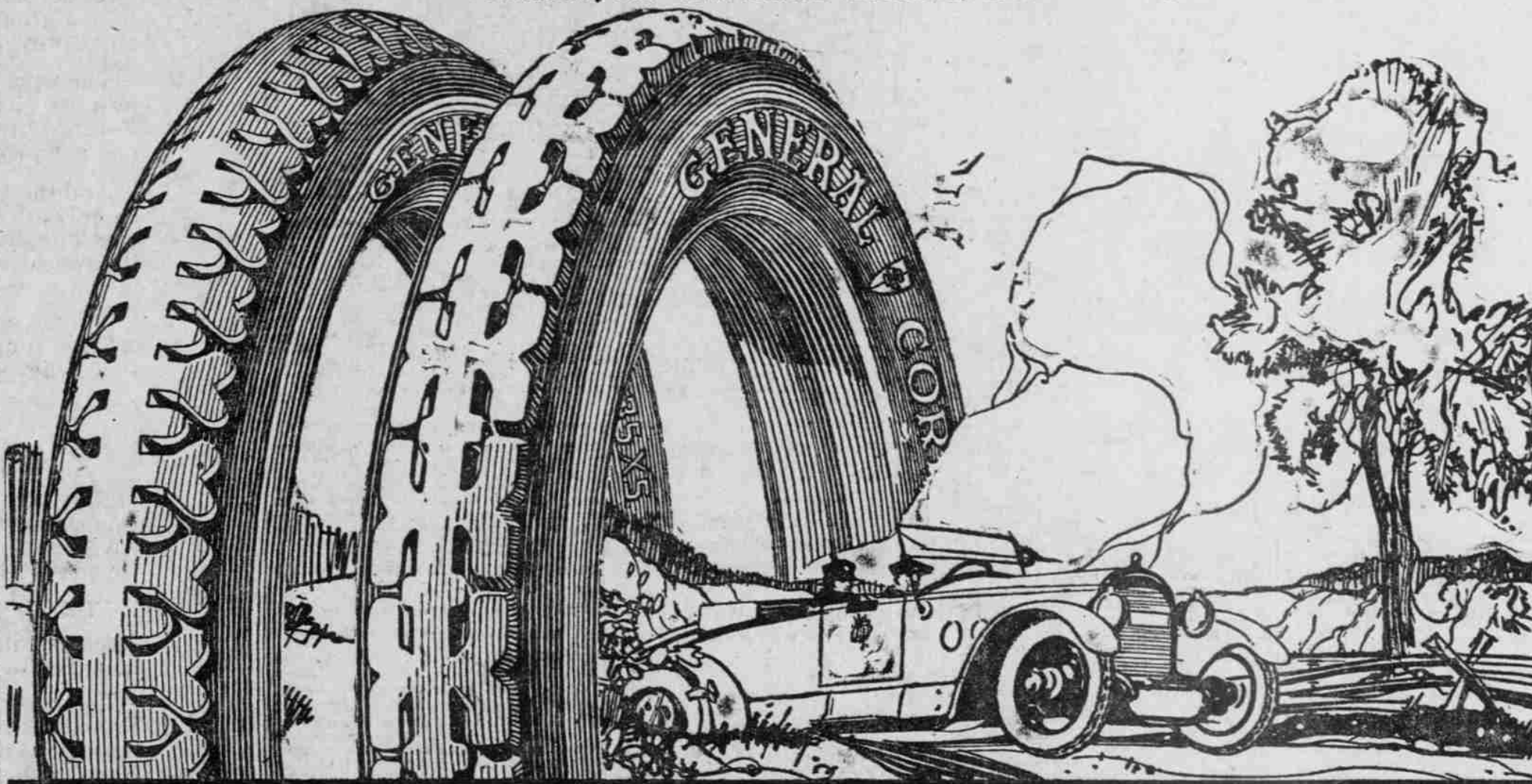
There is no such word as "luck" in our tire-building vocabulary. We leave nothing to chance in design, materials, men, measurements or process. Every General Tire is built to stand up—to stand up and deliver mileage.

The General Tire is Akron's great tire because it stands out as the tire that stands up.

You want just the kind of a tire that the General is, and it is priced at a figure you can afford to pay for tire satisfaction.

AMERICAN TIRE & RUBBER CO.

ON THE GENERAL CORNER Broadway 180—Two Phones—Broadway 2300 BROADWAY AT OAK STS.



THE GENERAL TIRE

—goes a long way to make friends

Built in Akron, Ohio, by The General Tire and Rubber Co.

TRUCKS HELP IN TRAFFIC

RAIL PROBLEM GETS AID IN FREIGHT JAM.

Industrial Transport Reaches Such Great Development That Road Wear Is Big Item.

NEW YORK, May 8.—If Captain Nicholas Joseph Cuniot, the Frenchman who in 1769 invented the first self-propelled road vehicle, could visit the United States today, he would be astonished, perhaps, to find the horse almost obsolete, the United States government on the eve of spending \$63,000,000 for good roads and factories turning out automobile trucks at the rate of about 1000 a day.

Table showing the distribution of motor trucks in the United States by industry.

DRIVING FORM HELPS

HALF PLEASURE OF MOTORING IS IN HANDLING EASE.

Velvety Stops and Starts Save Wear and Tear on Motor and Gas and Oil Bills.

According to a writer in American motorist, half the pleasure in motor-ing comes with learning to manipulate your car with ease and grace.

The mechanical act of gear-shifting can be learned in five minutes.

Leaking Valves. Loss of power is not the only trouble that is caused by leaking valves.

Howell-Swift Tire Co.

445-7 Stark Street Portland

Factory Distributors

CANTON CORD and BLACKSTONE TIRES

100 Per Cent QUALITY 100 Per Cent SERVICE 100 Per Cent SATISFACTION