

CARS FOR SHOWS TO MOVE VIA FREIGHT

No More Special Baggage Vans for Automobiles.

MERCER HAS LOCOMOBILE

Harroun Company Plans Substantial Increase in Capital Stock and Change in Name.

DETROIT, Jan. 3.—Pity this year's flock of exhibition motor cars. Instead of moving at express speed from the various factories of Detroit toward the annual automobile show in New York, comfortably ensconced in

mobile common stock and giving it control. Mercer Motors itself was taken over by E. S. Hare, former vice-president of the Packard Motor Car company, recently, and associated with Mr. Hare as vice-presidents are Henry Lunsdale, O. E. Hunt and H. D. Church, all former Packard men.

STORAGE BATTERY FILLER

Glass Tube Through Cork Makes Pouring Water Easy.

Many car owners have suffered the annoyance of trying to pour distilled water into their storage batteries and having much of it slop over. Here is a little device that makes this operation accurate and easy. Drill a hole in the cork that fits an appropriately sized bottle. Into this hole thrust a quill or glass tube. Next drill a small hole in the neck of the bottle, just about where it swells out into the body. The flow of water can be regulated by covering and uncovering this hole, which admits air to the bottle.

APPLYING THE GLUE TO WOOD

Article to Be Glued Should First Be Carefully Cleaned. Glue joints between wood surfaces which have been coated with shellac

NEW WHEEL PROVES BOON FOR TRUCKS

Quick Changes of Pneumatic Tires Possible.

FIRESTONE IDEA SUCCESS

Chief Objection to Air Inflated Tires for Heavy Machines Met by New Invention.

"I've had men tell me time after time that they couldn't see pneumatic tires for trucks," declares L. J. Sparks, Firestone representative. "The argument—and it was a good one as far as it went—was that it



The Sign of Good Trucking Service: Manufacture—Operation—Maintenance

Firestone Ship by Truck Bureau

65 North Park St.

Bdwy. 2367

Cut Out and Save This Truck Route Schedule

Schedule Brought to Date—Destroy All Previous Listings

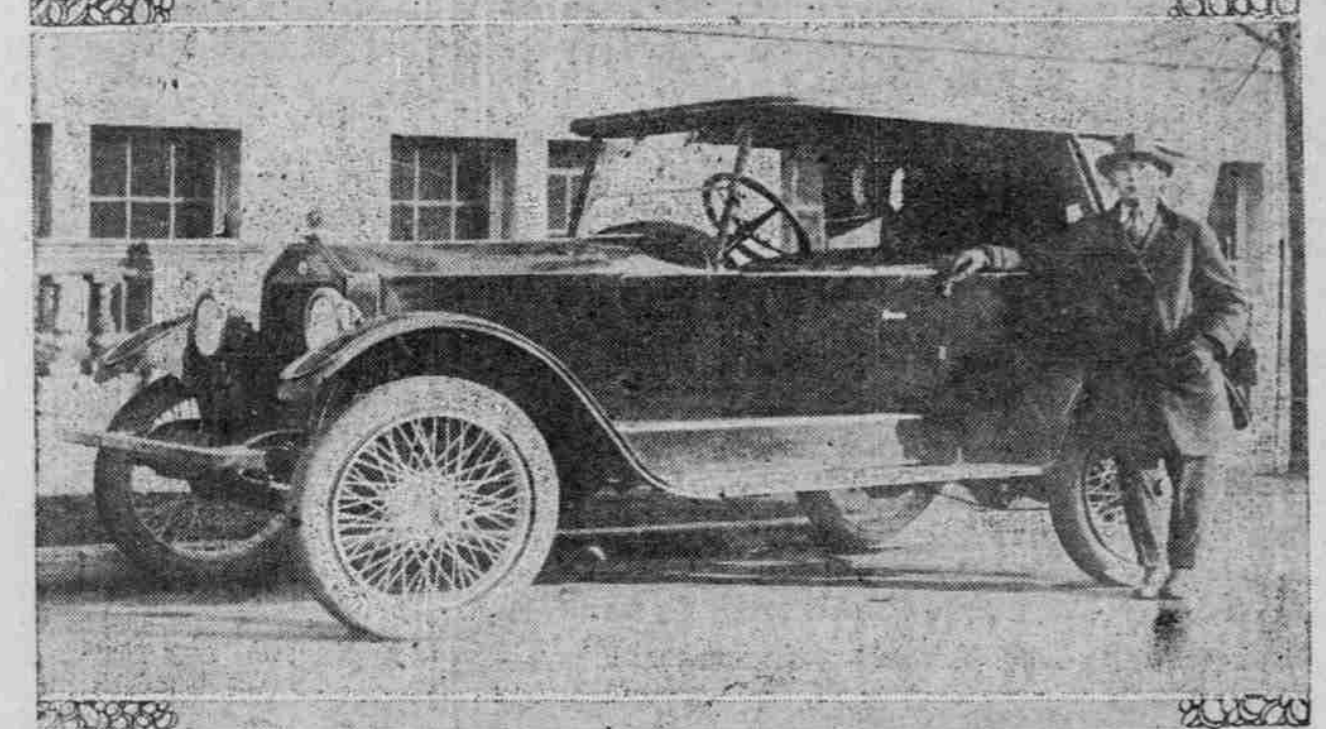
- ROUTE NO. 1.—Distance, 120 miles round trip to Salem. Covers east side of Willamette river along Pacific highway.
ROUTE NO. 2.—Distance, 50 miles round trip to Liberal. Covers all way points between Portland, Oregon City and Liberal.
ROUTE NO. 3.—Distance, 70 miles round trip to Forest Grove. Covers all points between Portland, Hillsboro and Forest Grove.
ROUTE NO. 4.—Distance, 40 miles round trip to Oregon City. Covers all way points between Portland and Oregon City.
ROUTE NO. 5.—Distance, 18 miles round trip to Vancouver. Pacific Highway to Vancouver.
ROUTE NO. 6.—Distance, 22 miles round trip to Tigard, Multnomah and Tigarville.
ROUTE NO. 7.—Distance, 50 miles round trip to Heekinson, Wash. Daily freight between Portland, Vancouver, Orchards, Silton, Brush Prairie and Heekinson.
ROUTE NO. 8.—Distance, 64 miles round trip to Washougal, Wash. Covers all points between Portland and Washougal.
ROUTE NO. 9.—Distance, 35 miles round trip to Gresham, Powell Valley road to Gresham.

- ROUTE NO. 10.—Distance, 45 miles round trip to Scappoose. All points between Portland and Scappoose and Lower Columbia highway.
ROUTE NO. 11.—Distance, 20 miles round trip to St. Johns and Kenton. Returns by Liberty road, west side.
ROUTE NO. 12.—Distance, 55 miles round trip to Warren. Covers Linton, Burlington, Holbrook, Scappoose and Warren to Lower Columbia highway.
ROUTE NO. 13.—Distance, 70 miles round trip to St. Helens. Covers all points between Portland and St. Helens on Lower Columbia highway.
ROUTE NO. 14.—Distance, 60 miles round trip to Newberg. Covers all points between Portland and Newberg.
ROUTE NO. 15.—Distance, 40 miles round trip to Wilsonville. Covers all points between Portland and Wilsonville.
ROUTE NO. 16.—Distance, 70 miles round trip to Dayton. Covers all points between Portland and Dayton.
ROUTE NO. 17.—Distance, 20 miles round trip to Mount Scott and Lentz.
ROUTE NO. 18.—Distance, 70 miles round trip to Deer Island. Covers all points between Portland, Columbia City and Deer Island.
ROUTE NO. 19.—Distance, 70 miles round trip to Battleground.

Inter-City Truck Transportation Companies Operating Out of Portland

- Arnold Trucking Co., 1218 Union Ave., West 7102.
Behrke, G. A., 40 First St. Broadway 2191.
Commercial Transfer Co., 225 Ash St. Bldg. 2082, A 2078.
Dennis, J. A., 742 Vandervilt St. Col. 896.
Gilsan Truck Co., 40 Second St. Broadway 5121.
Hansen, P. R., 88 North Sixth St. Bldg. 2199.
Hertel, E. M., 181 Skidmore St. Wain. 73.
Johnson's Truck Line, 205 Washington St. Main 6051.
Lawson Truck Co., 226 Ash St. Broadway 2859.
Loonnis Brothers, 40 Second St. Broadway 5121.
Merritt's Truck Line, 205 Washington St.
Newberg Truck Co., 40 Second St. Broadway 5121.
N. S. Oldham & Sons, 241 Front St. Main 2599.
Oregon-Wash. Truck Service, 40 Second St. Broadway 5121.
Pioneer Auto Truck Co., 226 Ash St. Broadway 2854.
Portland Auto Transportation, 205 Washington St. Main 1559.
Portland-Washougal Truck Line, 40 Second St. Broadway 5121.
Rogers Auto Transfer Co., 27 North 3rd St. Main 5259, A 3110.
Reddaway's Truck Line, 87 Second St. North.
Sigsbee Auto Service, 40 Second St. Broadway 5121.
Warren Truck Line, 205 Washington St. Main 6051.
Watkins, A. J., 40 Second St. Broadway 5121.
Wedemeyer Truck Service, 205 Washington St. Broadway 5121.
Williams Valley Transfer Co., 124-128 North Fifth St. Broadway 454.
Williams Transfer Co., 205 Washington St. Main 6051.
Alberta Transfer Co., 44-46 East Sixth St. N. Phones East 8460, Res. B 2044.
American Transfer & Storage, 309 Oak St. Broadway 4123.
Auto Baggage Transfer & Storage Co., 279 Melville St. Main 1560.
Brooklyn Transfer Co., 373 Hawthorne Ave. Phones: Office, East 4460; residence, Sellwood 566.
Baggage & Omnibus Transfer Co., 55 N. Park St. Broadway 1090.
Baggage Transfer & Express Co., 60 Sixth St. Broadway 222.
Baggage Transfer Service Co., 68 1/2 Broadway, Broadway 120.
Bee Line Auto Delivery, 304 Third St. Main 7324.
Brewster, W. W., 745 Eleventh St. Broadway 155.
Broadway Transfer Co., 86 Union Ave. East 6011.
B. & C. Transfer Co., 270 1/2 Third St. Main 5750.
Central Transfer Co., 652 Broadway 153.
Central Transfer & Storage Co., 272 Fourth St. Main 7575.
City Motor Trucking Co., 315 Hawthorne Ave. East 3230.
City Transfer & Storage Co., 73 Front St. Main 42.
Clyde Transfer Co., 88 N. Sixth St. Broadway 2199.
Columbia Transfer Co., 109 1/2 N. Sixth St. Bldg. 1761.
Commercial Transfer Co., 35 First St. Broadway 2082.
Cooler Bros' Baggage & Transfer Co., 310 Oak St. Broadway 406.
Dodge Delivery & Transfer Co., 200 1/2 Washington St. Main 510.
Driscoll & Collier Transfer, 551 Jefferson St. Main 2171.
East Side Transfer & Baggage Delivery, 102 1/2 Belmont. Tabor 256.
Eaton & Maxwell, 222 Pine St. Main 7882.
Empire Baggage & Transfer Co., 145 Eleventh St. Broadway 155.
Ever-Ready Transfer Co., 411 1/2 Stark St. Broadway 401.
Pacific Storage & Delivery Co., East Madison and First Sts. East 891.
Fulmer, L. L. Coal and Transfer, 1009 Belmont. Tabor 2623.
Fulton, H. H. & Sons' Transfer, 550 Hawthorne Ave. East 450.
C. W. Glendon, 40 Second St. Broadway 5121.
Green Transfer Co., 202 1/2 Alder St. Main 1261.
Hatters' Auto Transfer Co., 707 East Sixth St. N. Woodlawn 3381.
Heiser Bros. Transfer Co., 464 N. First St. Broadway 3667.
H. F. Hertel, 181 Skidmore St. Wain. 5358.
Herrick & Cline, 55 E. Eighth St. East 5446.

LATEST DIXIE FLYER TOURING MODEL FULL OF PEP AND POWER.



The 1920 model, here shown with H. F. Miller, sales manager for the C. H. S. company, Dixie and Moon distributors, has several refinements over preceding one.

Increased power has been given in the new Dixie by means of a slightly lower gear ratio, better adapted to the hills around these parts. There is 3 1/2 inches more room in front, upholstery is better, the car has a more slanting windshield and sets closer to the ground.

special baggage cars, as has been their invariable fate in past years, the high-priced, specially-built, newly-perfected models, the last word in automobile production this year will have to rest content to move by ordinary freight cars.

Aside from this shock to their pride, however, automobile experts agree that the show cars will be none the worse for their pebbled experience. None have refused to make the journey. Although Detroit figures are not yet on hand, it is estimated that from 25 to 30 cars will make up the train which Detroit manufacturers are arranging.

OIL YELLOWSTONE ROUTE MOVE FOR BETTER ROADS BEGUN AT SALT LAKE.

Project Contemplates Making Yellowstone Park Highway Both Dust and Mud-Proof.

SALT LAKE, Jan. 2.—Soon after the first of the year the project for grading and oiling the roads between Salt Lake and Yellowstone Park will be under way in a systematic way.

The plan for improvement contemplates the grading of the roads, surfacing throughout and the application of special road oil. According to persons familiar with the oiling of roads, this treatment makes them virtually mudproof, dustproof and rutproof. After the surface is prepared, the oil is forced into the ground under great pressure in the form of vapor, which insures a thorough treatment for many inches beneath the surface.

Under oil treatment the earth becomes soft, pliable and clings together under heavy weight, springing back into place after a heavy vehicle passes over it.

The plan will be taken up by commercial clubs, garage men and the city and county officials in the various communities along the route. It is estimated by engineers that the cost of the oil, freight and application will run from \$100 to \$125 a mile.

Touring authorities estimate that that already heavy tourist traffic to the Yellowstone from Salt Lake will be doubled next year if the roads are put in good condition before the season opens.

THIS BUILT-IN SIDE WINDSHIELD IS AN EXCLUSIVE FEATURE OF THE NEW STANDARD EIGHT.



Lewis E. Obry, Standard eight distributor here, pointing out one of the conveniences of the latest Standard eight model.

Advertisement for Firestone tires with text: 'There is a Firestone Truck Tire for every load, road and condition of service. Firestone'

Advertisement for GMC Trucks with text: 'GMC TRUCKS GENERAL MOTORS COMPANY Wm. Jossy, Prop., Oregon Washington Transfer Co. added another 3/4-Ton GMC Truck to their fleet. Another Truck Owner is Convinced of G-M-C Quality Wentworth-Irwin, Inc. Second St., Cor. Taylor Portland, Oregon'

Advertisement for Diamond T Trucks with text: 'DIAMOND T Wm. Jossy, Prop., Oregon Washington Transfer Co. added another 3/4-Ton GMC Truck to their fleet. Another Truck Owner is Convinced of G-M-C Quality Wentworth-Irwin, Inc. Second St., Cor. Taylor Portland, Oregon'