

SILVER MINES HOLD ALASKAN ATTENTION

Discoveries in Mayo District Give Great Promise.

GOLD OUTPUT IS REDUCED

Cost of Labor and Material May Result in Great Changes in Industry of North.

BY THOMAS B. DRAYTON, SEWARD, Alaska, Dec. 2.—(Special.)—The mining situation in Alaska and the Yukon country at the present time is unprecedented. Conditions even approximately similar have not existed before. Any forecast touching the immediate future of the mining game by anybody in the best of guess, and a guess finding its source in the temperament of the guesser rather than one based upon any known facts of sufficient significance to justify a definite conclusion.

The few things we know definitely, that would be worth something in forming an opinion as to the outlook in normal times, lose their value in the face of rapidly changing conditions that are new to our experience, and which may or may not bring about an entire transformation of the mining industry as we have known it in the past. We know that gold mining is virtually at a standstill throughout the north. Without doubt the particular fact is due primarily to the low price of the metal and the relatively small amount of labor, supplies and transportation that may be had in exchange for it. In other words it costs more to produce gold today in Alaska and the Yukon than gold is worth.

Gold Mining Diminishes.
Until these conditions change, gold mining naturally will continue to diminish in importance in these parts. The entry of new factors, new processes of mining, may have a rather larger effect than most miners hope for at this time. For example, the newly introduced cold water thawing process in the treatment of frozen alluvial placers is arousing much enthusiasm. Men who have tried it out uniformly agree that it is more satisfactory than the old system of steam thawing, both because the ground is better adapted to dredging and can be handled less expensively, and chiefly because the thawing factor itself is out to less than half the cost.

The latest official figures we have are those for 1918, which show Alaska's total gold production in that year to have been less by 250,409 ounces than during the preceding year, and the smallest production since 1904. That loss, expressed in dollars and cents, means that Alaska's gold production fell off \$5,176,400 in one year. The total mineral production of Alaska in 1918 amounted to \$28,253,961, or nearly \$12,500,000 less than that of the previous year. A large part of that reduction is to be accounted for by the diminution in copper output; which copper producers explain as being due to a shortage of labor chiefly, but also to an important degree to inadequate transportation facilities.

Silver Holds Interest.
Perhaps the most interesting single feature of the whole mining situation at the moment hinges on silver. The continual curtailment of copper production necessarily curtails the production of silver, which is a heavy by-product of copper mines. Simultaneously the market discloses a heavy bulge in the price of silver; the foreign demand for the white metal being practically unlimited chiefly on account of the present unprecedented requirements of China and India. The prevailing high price naturally has stimulated interest in silver mining. Indeed, silver is the topic now uppermost in the minds of Alaska mining people.

The recent finds in the Mayo district alone will have a noticeable effect upon the silver market if reports that look to be reliable prove substantially correct. There are already many mines that look big in the new district, but the Big Missouri, Forty-Nine, and the Premier are simply marvels in prospect. A reliable mining engineer, to whom the writer is indebted for the information, recently walked through a tunnel in the Premier for 600 feet, and through four prospects of 200 feet each, and at every point found the ore so rich that great layers of solid silver could be scraped off. In addition the mine carries heavy gold, and other values.

DEATH VALLEY A RESORT

Railroad to Construct Big Hotel for Winter Tourists.

LOS ANGELES, Cal., Dec. 20.—Death valley and the Funeral range, a country heretofore used chiefly as the setting for fiction and motion pictures, is to be made a tourist resort, according to an announcement here by officials of the Tonopah & Tidewater railroad and the Death Valley road.

The temperature in Death valley rises to 150 degrees in summer, but from October to May it seldom rises above 70 degrees. The railroad and some manufacturing interests which mine borax in the valley will construct a hotel, it was announced, which will be open only during the cool months.

Scenic features and climatic benefits for certain organic diseases will be advertised as the attraction, and as a preliminary step a well-known Los Angeles photographer and writer has been sent to the valley to make a series of pictures, with accompanying text to be used in making the new resort known nationally.

TUCSON WILL SELL SUGAR

City Takes Over Confiscated Stock of Chinese Merchant.

TUCSON, Ariz., Dec. 20.—This city became possessor of 12,000 pounds of sugar sold to it recently by United States Marshal Dillon. It came opportunely when stocks in stores were running low. Government officials said the sugar was seized from Hop Lee, a Chinese merchant, against whom a charge of hoarding was lodged. Federal authorities then sold the sugar to Tucson merchants at 11½ cents a pound, with the provision that they were allowed to sell it at a profit of 1 cent a pound.

The Pre-Holiday Sale of Mendel-Drucker Wardrobe Trunks

Offers Tremendous Savings.

The Prices in the Sale:

\$47 \$55 \$80

Mendel-Drucker Trunks Are ABSOLUTELY DUSTPROOF. Luggage Section, Fifth Floor.

EXTRA!

READING down, this section will supply many a thrill for the bargain lover. And the fact that this remarkably desirable merchandise is so sharply reduced at this time—just when most wanted—is but another proof of our claim as A PUBLIC SERVICE INSTITUTION.

Printed Georgette Crepe Special \$2.45 a Yard

—We could not begin to duplicate this at present wholesale cost!
—Beautiful novelty printed georgettes in flower and conventional designs. Lovely for blouses and frocks. Background colors are GRAY TAUPÉ CHINA BLUE SUN BROWN NAVY
—The most wanted shades and patterns—IN LIMITED ASSORTMENTS!

Second Floor—Lipman, Wolfe & Co.

Black Laces

In a Wonderfully Special Sale 45c-95c the yard

—Finest quality St. Gall. Venise and Cluny edges and bandings; 1 to 7 inches wide. Second Floor.

Bag Lengths

Of Novelty Ribbon Special \$1 the length

—One-half yard lengths of lovely novelty tinsel and taffeta ribbon; floral and conventional designs. Street Floor.

Ribbon Novelties

A Wonderful Selection at 50c to \$35 each

—Including purse bags, vanities, sachets, novelty bows, coat hangers—TO CLOSE OUT AT HALF PRICE. Street Floor.

Muff Forms 75c

—More than ever in demand! Filled with fluff and finished throughout ready to cover. Very special at this price. Street Floor.

Shawlette Scarfs \$6⁹⁵

—Knitted shawlette scarfs, fancy weaves in pocket and belted effects. Wonderfully special at this price. Fourth Floor.

Fur Trimmings 1/3 Off

—Lined and taped ready to sew on.
—Including coney (black and brown); seal de luxe, mole de luxe, squirrel, ringtail squirrel, nutria, beaver, real seal, skunk and opossum. 2 to 6 inches wide.
—Regularly up to \$50 the yard.
—And real Hudson, real mole, skunk, opossum and beaver.
—Formerly \$20 to \$39.50. Second Floor.

Extra Specials From the Art Needlework Department

Hand Embroidered Models Less Than Cost

Lot 1—Including such wanted things as Dresser Scarfs, Waists, Bags, Pajamas, Sacques, Pillows, Aprons, etc. Sale price \$2 each.
Lot 2—Includes a host of gifty things. Sale price \$3 each.

Art Needlework Section, Fourth Floor—Lipman, Wolfe & Co.

Novelties Half Price

—Hand-painted Candy Boxes, Pillows, Tie Racks, Whisk Broom Holders, Boxes, Baskets, Smelling Salts Bottles, Fancy Box Novelties and many others.

Table Covers and Pillow Covers of cretonne and stenciled crash, 75c each.

Knitting Bags, Etc.

Knitting and Shopping Bags, blue and black moire, velvet and cretonne. Special at \$3 each.

Fancy Silk Pillows—Taffeta and china silks; lovely—\$4.95.

Table Ferneries at 75c each

Our Entire Stock of Silk Sweaters Greatly Reduced for Monday's Selling \$32⁵⁰ \$37⁵⁰ \$47⁵⁰

—Tuxedo styles, belt and sash trimmings.
—TURQUOISE, WHITE, BROWN, BUFF, ROSE, PEACOCK, SALMON, EMERALD, NAVY, GREEN, HENNA, OLD ROSE, PEACH, PINK, BLUE, AMERICAN BEAUTY, NAVY, SAND, BLACK AND WHITE.

—Silk sweaters are to be found on many a woman's list of "things wanted for Christmas"—so let this be your opportunity, you gift-seekers, to make someone's wish come true.

Fourth Floor, Lipman, Wolfe & Co.

A Sale of Black Silks, Yard \$1⁹⁸

—the equal of which has not been seen hereabouts for months!
—Likewise an opportunity not likely to be repeated for many more months, with the present wholesale cost of good silks.

Best Blacks, Best Weaves, Most Dependable Qualities—All 35 Inches Messaline, Taffeta, Satin and Peau de Soie

40-Inch Fancy Silks, Yard \$2²⁵

—Printed pussywillow, foulard (Cheney Bros.), Jacquard printed crepe, radium; for frocks, etc. THE SAVINGS ARE ENORMOUS! Many a gift need will be supplied here.

Second Floor—Lipman, Wolfe & Co.

CHRISTMAS CARDS ON SALE TABLES—STREET FLOOR



Let the

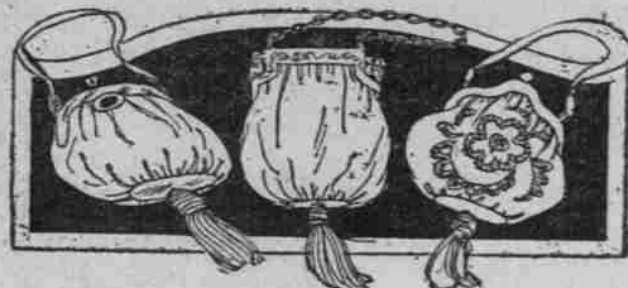
Tip Top Inn Bakery

Supply Your Christmas Pastry Needs.

Order Them Tomorrow

French Pastries and Individual Breads
Mince and Pumpkin Pies—English Fruit Pudding and Fruit Cake.
Eighth Floor.

Ten Dollar Gift Sale!

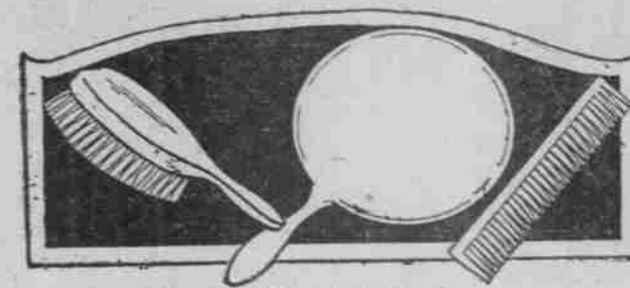


Beautiful New Bags \$10

Of Exquisite Chiffon Velvet
—Daintily fitted and fastidiously lined with lovely silk. Finished with large tassel.

—Assorted metal cast frames of the most attractive sort.

Street Floor—Lipman, Wolfe & Co.



Composition White Ivory

Toilet Sets \$10

GIFT-SEEKERS, TAKE NOTICE!

Beautiful Wanted Toilet Sets in White "Ivory," \$10

—Including large hair brush, concave back, with good quality bristles; hand mirror, 6½ inches by 11 inches, and one 9-inch comb, either all coarse or coarse and fine teeth.

—This is an offer of merit. DO NOT DELAY!

Street Floor—Lipman, Wolfe & Co.

Gift Items in Domestics

Specially Priced for the GREAT TEN-DOLLAR SALE!

Gift Linen Sets—The Nationally Known DERRYVALE LINENS—\$10

—One pure linen tablecloth, size 2x2 yards, in a dainty gift box, together with a charming book on how to arrange the table for every occasion.

Wool Mixed Blankets \$10

—Fine white wool mixed blankets with pink or blue borders, tape binding.
Oregon City Auto Robes \$10

—Fine quality, dark colored robes, in a fine assortment.

Second Floor—Lipman, Wolfe & Co.

Fine Satin Bed Spreads, \$10

—Beautiful spreads with heavy raised Marseilles designs; size 82x94 inches.

Round Scalloped Cloths, \$10

—Pure linen damask tablecloths, 70 inches in diameter.

Wilton Rugs \$10

Size 27x54

WONDERFULLY SPECIAL!

—And only to be sold at so low a price upon such a momentous occasion as a TEN-DOLLAR SALE!

—Good quality Wiltons in fascinating oriental and conventional designs; fringed. REMARKABLE!

Matting Boxes \$10

A VERY SPECIAL OFFER!

—Firmly constructed utility boxes covered with fine quality plain matting and bamboo trimmed. Complete with sliding tray; on casters.

Gift Furniture Section, Fifth Floor—Lipman, Wolfe & Co.

400 Boys' Winter Suits \$10

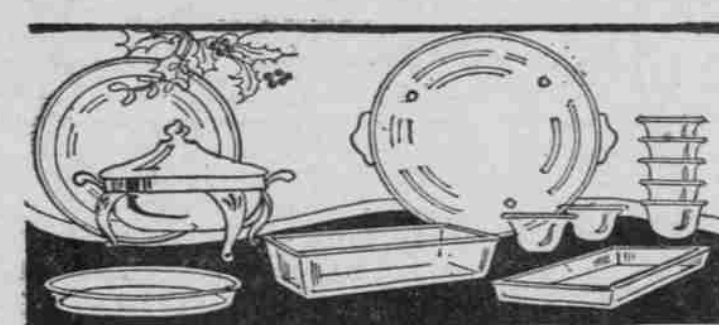
—Only in an event such as THE TEN-DOLLAR SALE could we sell these fine suits at so great a price concession. Less than today's wholesale cost.

REMEMBER, FOR ONE DAY ONLY!

—They are STURDY SUITS OF TWEEDS, HOMESPUNS, CASSIMERES AND CHEVIOTS—IN SMART MIXTURES, STRIPES AND PLAIDS

—Belted and Norfolk styles. All new models. All sizes for boys 6 to 17 years.

MOTHERS, BUY TOMORROW!
Fourth Floor.
Lipman, Wolfe & Co.



Twelve-Piece

Pyrex Set \$10

The Gift Modern—Immaculate Pyrex

—The set includes one 8-inch casserole with cover and nickel-plated frame; one pie pan, one bread pan, one biscuit pan, one cake pan, one serving tray and six custards.

AN EXTRAORDINARY SAVING IS PRESENTED!

Combination Offer \$10 for

1 Large Aladdin Aluminum Double Roaster and 1 Three-Piece Carving Set.

Household Efficiency Section, Eighth Floor—Lipman, Wolfe & Co.

The China Department Contributes

50 Dinner Sets

To the TEN-DOLLAR SALE

\$10 the Set

The Celebrated EDWIN M. KNOWLES CHINA In Four Open-Stock Patterns

The Popular Mayflower and Cumberland Shapes

42 and 51-Piece Dinner Sets

—White and gold band style, blue and gold hair line, the dainty French rose design, and exquisite thistle design. —Think of it! Think of the substantial saving on china of this famed maker, EDWIN M. KNOWLES. Edwin M. Knowles china is

THE MOST POPULAR AMERICAN-MADE CHINA!

—A man, in choosing from the patterns and shapes of the dinner sets in this sale, can make no mistake, for each particular set is correct in shape and design and one is scarcely more beautiful than another—it is merely a matter of taste.

BUT COME EARLY, FOR THEY WON'T LAST LONG!

Sixth Floor—Lipman, Wolfe & Co.

A Sample Line of Umbrellas \$10

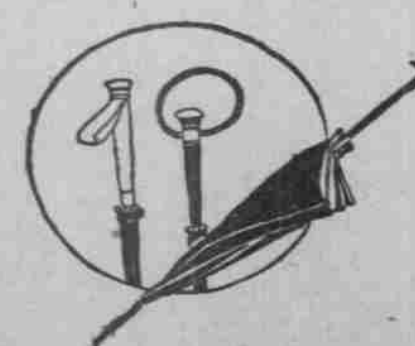
That Surpasses Anything We Have Yet Offered

—Or for that matter, anything we have seen offered anywhere.

All Novelty Handles No Two Alike

—This value might well be termed PHENOMENAL!

—In many instances you SAVE AS MUCH AS YOU SPEND! Think what this means just before Christmas!



Street Floor.
Lipman, Wolfe & Co.