

STOCKS OF GASOLINE SHOW AN INCREASE

Exports Much Less Than During War Period.

OVERPLUS ON HAND BIGGER

Production Also Shows Large Gain Which is Being Offset by Increased Number of Cars.

WASHINGTON, Oct. 4.—Production

of crude oil for the first six months of 1919 indicates a greater production for this year than last, according to figures furnished the United States geological survey. For the first six months of 1919, 22,900,000 barrels, compared with 21,000,000 barrels in the first six months of 1918, an increase of 1,900,000 barrels.

Storage of domestic crude petroleum, which showed gradual decline in 1918, when 23,000,000 barrels were withdrawn from storage, has reversed position and in 1919 there has been an increase of storage of 3,000,000 barrels and on June 30, 1919, the total reserve approximated 126,000,000 barrels.

Gasoline production has increased, while exports have decreased. In the first six months of 1919 237,000,000 gallons more of gasoline were produced than in the first six months of 1918, according to figures from the Bureau of Mines. At the same time the exports decreased by 10,000,000 gallons, due to the cessation of hostilities.

Domestic Demand Huge. In the first half of 1919 2,000,000 gallons more of gasoline were exported to the insular possessions of the United States than in 1918, due to the cessation of hostilities. Domestic demand for gasoline has been 2,000,000 gallons greater in the first half of this year than in the first half of 1918. It is expected that with the increasing use and number of cars, tractors and trucks the demand for gasoline will continue to increase.

Production Now is Gaining. Retinery statistics show for the first six months an increase in production from 1918 of 17,000,000 gallons; exports decreased by approximately 11,000,000 gallons; domestic consumption increased only 3,000,000 gallons and shipments to insular possessions increased from 2,000,000 to 3,000,000 gallons. The stock of gasoline and oil in the refineries for June 30, 1919, showed an increase over June 30, 1918, of 281,000,000 gallons. It is probable the present fuel oil surplus is temporary, and in from two to five years fuel oil will be in great demand. This is because the navy is converting its coal-burning ships to oil burners and if the plans of our contemplated merchant marine are developed there will be a large increase in the annual consumption of fuel oil.

The lubricating oil output for the first six months of 1919 and for a similar period in 1918 is about the same, amounting to approximately 400,000,000 gallons, but with a decrease of 20,000,000 gallons in the domestic consumption for the first half of this year, possibly due to the large munition plants closing down, and that during the first half of the year the nation was not entirely converted from a war to a peace basis.

PROPOSED ROAD TO PASS MOUNT ADAMS

Highway Would Skirt Picturesque East Side of Peak.

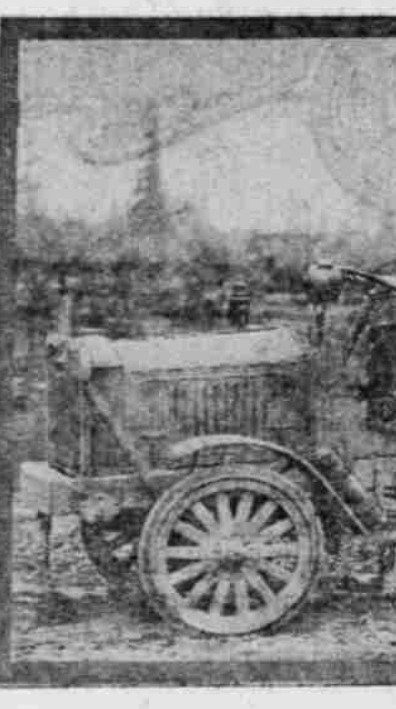
YAKIMA IS ONE TERMINUS

Distance From That Town to Portland Will Be Greatly Shortened if Road is Built.

DELAWAR MOTORISTS WRATHY AT METHODS OF B'GOOSH CONSTABLES.

In a determined effort to break up speed-trap methods which have become very obnoxious in some parts of Delaware near Wilmington lately, the Delaware Automobile Association and

THIS 3 1/2-TON STANDARD TRUCK HAULS FOUR YARDS OF SAND OR GRAVEL AT A LOAD IN ROAD CONSTRUCTION WORK.



One of three Standard trucks of this same size, with dump body equipment, working on new highway near Beaverton. They haul sand and gravel from Portland six or eight miles to where work is in progress, averaging \$8 per load. The owners of these trucks earn in gross receipts as much as \$70 per day. The trucks were purchased from the Palace Garage company.

pany, this great enterprise has been decided upon by the directors solely with a view to the welfare of Buick employees and other General Motors interests at Flint, to relieve the congestion and provide desirable living quarters for as many employees as possible and at the same time to add to the pleasure and enjoyment of all employees and their families.

WATER POLO CHAMP SELLS LIBERTY AND BRISCOE CARS.



Frank J. McHale

Everybody at the Multnomah Amateur Athletic club knows Frank J. McHale, who is one of the demon swimmers and water polo players at that institution. This is introducing him as salesman for Liberty and Briscoe cars with the W. H. Wallingford company. McHale recently returned from a war-time hitch in the navy, where he rated machinist's mate, second class, and drove a Ford for the chaplain. This came natural to him, as he was with the Ford Motor company here for four years and eight months before he shipped in the navy.

USES OF PETCOCK.

When it is not possible to get at the air valve of the carburetor to pour water into it to remove carbon, it is a good idea to have a petcock fitted into the inlet manifold. This also serves when it is necessary to prime the engine in cold weather.

PROPOSED ROAD TO PASS MOUNT ADAMS

Highway Would Skirt Picturesque East Side of Peak.

YAKIMA IS ONE TERMINUS

Distance From That Town to Portland Will Be Greatly Shortened if Road is Built.

DELAWAR MOTORISTS WRATHY AT METHODS OF B'GOOSH CONSTABLES.

In a determined effort to break up speed-trap methods which have become very obnoxious in some parts of Delaware near Wilmington lately, the Delaware Automobile Association and

THIS 3 1/2-TON STANDARD TRUCK HAULS FOUR YARDS OF SAND OR GRAVEL AT A LOAD IN ROAD CONSTRUCTION WORK.



One of three Standard trucks of this same size, with dump body equipment, working on new highway near Beaverton. They haul sand and gravel from Portland six or eight miles to where work is in progress, averaging \$8 per load. The owners of these trucks earn in gross receipts as much as \$70 per day. The trucks were purchased from the Palace Garage company.

The new highway, through a branch road to the glaciers on the east face, will make easily accessible the grandest portion of the great peak. Mount Adams is the second highest peak of the Cascades and dominates the region of the middle Columbia. Like a great sentinel it guards forest and plain, hill and valley along the reaches of the mighty river. The waters from its snow-fields and its glaciers rush through picturesque canyons to join the waters of the river of the West on their journey to the Pacific, says the Pacific Northwest Motorist.

TRUCK TON MILES.

The best unit for determining motor truck comparative values is the ton mile. This means simply the carrying of one ton one mile. Thus, if you carry one ton five miles you get five ton miles. If you carry five tons one mile you get five ton miles. The ton mile unit in conjunction with cost, which the operator controls, gives the best basis for reaching conclusions in regard to the truck system.

TO STRAIGHTEN FRONT AXLE.

A method of restoring a front axle which has been bent is to take two lengths of 4x4 inch joist just long enough to reach from the upper side of the axle outside each spring plate to a cross timber of the ceiling or roof of the garage. Then if a jack is placed beneath the axle at the bend enough pressure may be applied by means of it to force the axle back into shape.

BEAUTIFUL ALPINE MEADOWS.

What may be properly called the park belt extends entirely around the mountain. No words can describe their beauty. The best known and most visited of the Alpine meadows are on the south side, looking down on Glenwood and Trout Lake countries.

THE MOST BEAUTIFUL PORTION IS BETWEEN THE 5000-FOOT CONTOUR ON THE SOUTH AND THE SNOW LINE ON THE NORTH.

On the west it is bounded by a great lava flow and on the east by Hell Roaring canyon. Within these boundaries are many little streams, forming the headwaters of Bird creek. The delightful cluster of valleys and meadows watered by the rivulets forms a camping place of rare beauty, which has been appropriately called Happy Valley. On a perfectly clear day farm houses in the Kilkittat valley, 30 miles away, may be seen with the naked eye.

ENGLAND GREAT AUTO FIELD.

Here Are Some Figures Sizing 'Em Up as Car Prospects.

A recent American estimate gave the rate of cars per head of population in Great Britain as 1 to 225. The potentiality of the car market in Great Britain can hardly be discussed

ACE TRUCK IS TAKEN BY AUTO SALES CO.

Oregon and Part of Washington in Territory.

HIGH-GRADE UNITS USED

Truck Equipment Includes Electric Lights and Starter, Bumper and Hub-Odometer.

BEFORE TAKING ON THE ACE TRUCK

the Auto Sales company made an intensive study of the truck situation in this territory. Mr. Staiger announces that the company will feature 24-hour service for trucks 365 days of the year—that service will, in fact, be a paramount feature. The company also will have a free inspection service for their truck owners.

MOON LEADS IN CAR STYLES

IT SHARES DISTINCTION WITH CARS IN HIGH-PRICED CLASS.

"It will probably be of interest to the automobile-buying public to know what the styles for 1920 cars will be," said Fred W. Houghton of the C. H. S. company, distributor here for the Moon car. "Our designers have been carefully studying the trend of public taste, and we have found some interesting things about next year's automobiles."

MAGNETO FAILURE.

Irregular magneto action sometimes occurs because of end play in the armature bearings. The end motion of the armature may be sufficient to upset the action of the contact breaker and render the time of firing uncertain and irregular. Inserting a

ACE TRUCK IS TAKEN BY AUTO SALES CO.

Oregon and Part of Washington in Territory.

HIGH-GRADE UNITS USED

Truck Equipment Includes Electric Lights and Starter, Bumper and Hub-Odometer.

BEFORE TAKING ON THE ACE TRUCK

the Auto Sales company made an intensive study of the truck situation in this territory. Mr. Staiger announces that the company will feature 24-hour service for trucks 365 days of the year—that service will, in fact, be a paramount feature. The company also will have a free inspection service for their truck owners.

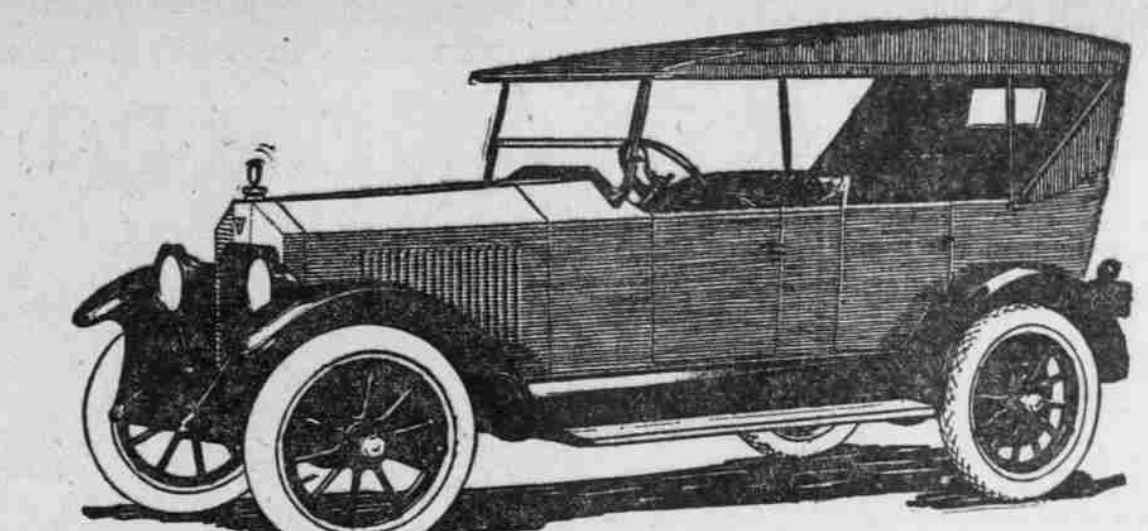
MOON LEADS IN CAR STYLES

IT SHARES DISTINCTION WITH CARS IN HIGH-PRICED CLASS.

"It will probably be of interest to the automobile-buying public to know what the styles for 1920 cars will be," said Fred W. Houghton of the C. H. S. company, distributor here for the Moon car. "Our designers have been carefully studying the trend of public taste, and we have found some interesting things about next year's automobiles."

MAGNETO FAILURE.

Irregular magneto action sometimes occurs because of end play in the armature bearings. The end motion of the armature may be sufficient to upset the action of the contact breaker and render the time of firing uncertain and irregular. Inserting a



The New Velie Is Here!

THE NEW VELIE which has had all motordom on its toes is here—on our salesroom floor. It is all that was promised—and far more.

You must SEE THE CAR to appreciate the striking beauty of its new Straight Line, High Cowl Body Design—Distinctive Radiator and Hood—Bevel-Board Fenders—Octagonal Lamps. And you must TRY THE CAR to know what the sensational new motor does. THIS IS THE FIRST SHOWING of the greatest automotive engineering feat of a decade. Burns low grade fuel. Has more responsive power—more speed—no vibration—no noise. Costs less to run.

Come and see the car—the first authoritative example of today's beauty—and style. Ride in it. Judge for yourself how far in advance of the ordinary the new Velie is!

D. C. WARREN MOTOR CAR CO. Distributors. 35-50 N. 23D ST., NEAR WASHINGTON. Phone Main 780.



fiber washer to take up the slack in the correct remedy.

Explosions in the muffler are caused by the presence of a fuel charge not ignited during the previous stroke of the engine. If these explosions are frequent there is a basic cause, which will be either too rich a mixture or some trouble in the electrical system. Muffler explosions therefore must be taken as a symptom of some deeper trouble which should be immediately eliminated.



SPECIAL! Week of Oct. 6-11. Sale of new and used RADIATORS at 35 to 65% off! For all models, including trucks. Guaranteed first-class condition. E. G. Gerber "Golden Rule Service" LITH AND DAVIS.

Owners of Commerce TRUCKS

Know of Our Service YOU--- Mister Prospective Buyer Should Investigate

- 1-1 1/2-ton chassis.....\$1685.00
1-1 1/2-ton, 35x5 cord tires.....\$1810.00
1 1/2-ton, 36x6 cord tires.....\$2095.00
All F. O. B. Portland

Impulse Starter, Electric Lights, Bumper, Windshield, Spotlight, Motor-driven Tire Pump.

McCraken Motor Co. State Distributors 490 Burnside St. Bdw. 93

Immediate Deliveries

The FLYER

The Sturdy Car \$1565 Portland

The steel strike is going to cause much delay in deliveries, and that long-looked for automobile may not be forthcoming this winter.

Why wait when we are in a position to deliver one now, and you will have the pleasure of an automobile much sooner than you expect?

Don't Come in Next Week—Come in Today

Distributors The C. H. S. Co. 65 North 23d St.

- Astoria, Or., S. & S. Motor Car Co.
Newberg, Or., F. M. Shuck Auto Co.
Corvallis, Or., A. G. Held & Co.
Roseburg, Or., Umpqua Motor Sales Co.
Hood River, Or., Gilbert Motor Car Co.
North Yakima, Wash., Central Auto Co.
Pendleton, Or., Motor Inn Garage
Carlton, Or., Carlton Garage



Lang & Co. have ordered another G. M. C. 2-ton truck, making 5 G. M. C. trucks in their service.

Experience with many makes have shown them the most economical and satisfactory trucks to use

Wentworth & Irwin Incorporated. 200 Second St., Cor. Taylor.

LIGHTER AUTO FOR FUTURE

It Will Have Smaller Engine and Be Easier Riding.

Lighter cars, higher mileage and fewer cylinders are the predictions of auto engineers, both in this country and in England, for the motor vehicle of the future.

WILLARD SERVICE STATION

