

OREGON TO WORK ON ROADS ALL WINTER

Rains Will Stop Paving, but Not Rock Laying.

RAPID PROGRESS IS MADE

September Sees Greatest Amount of Construction—Miles of Highway to Remain Open.

Road construction in Oregon will be pressed forward through the winter by the state highway commission.

Paving will soon be discontinued, however, and one or two plants already have closed until spring.

While the paving soon will stop, rock work will be carried on and there are many miles of road under contract for macadamizing.

The Pacific highway will be open to Section 10 and the commission will partly macadam that grade and will arrange to help cars over it.

The new grade in the Cow Creek canyon will be macadamized. The Columbia River highway will be open all winter, an unheard of thing in the past.

The road to Tillamook, and the Yamhill-Nestucca highway, will be open all winter, an unheard of thing in the past.

From Portland to Salem the highway will be opened. All but 11 miles have been paved, this unpaved part being four miles between Canby and Aurora and seven miles on the south end.

Finished pavement between Junction City and Eugene and between Eugene and Goshen will be ready for traffic shortly.

From the California line to the top of the Siskiyou grade the highway has been hard-surfaced, and it has been paved to the bottom of the mountain on the north side.

All winter work will continue on the contract for the section of the Medford-Klamath Falls road, and the Jennie creek section will be paved by spring.

At Divide, one of the most dangerous places on the Pacific coast highway, which has been a man-trap, the overhead crossing was built months ago, and the heavy fill approaches have been made and the rocking will be taken care of by state force accout.

Paving near Corvallis has been suspended. This work was getting under way with speed when the condition of the subgrade developed a situation which caused the state to stop the work.

In central and eastern Oregon there are a number of contracts which are winter work and these will be kept going steadily. The last link in the Columbia highway between the sea and the Desautel river is between Mosier and The Dalles.

The Dalles, widening the abandoned railroad grade can be done until the snow becomes too deep.

STUDENT AFFAIRS COSTLY

University of Idaho to Need Fund of \$15,000 for Year.

UNIVERSITY OF IDAHO, Moscow, Oct. 4.—(Special.)—More than \$15,000 probably will be expended this year for the maintenance of student activities at the University of Idaho, according to a statement made today by Professor Howard T. Lewis, who heads a faculty advisory committee on student affairs recently appointed by President E. H. Lindley.

Present prospects are that funds received from registration, athletic contests and the several other customary sources, said Professor Lewis, will reach \$12,000. This entire sum will be expended for the support of student publications, debate, the different athletic teams, the glee club and other undergraduate activities.

Centralia Forms Choral Club.

CENTRALIA, Wash., Oct. 4.—(Special.)—The organization of a Centralia choral club was perfected last night at a meeting of local music lovers held in the Chamber of Commerce. The following officers were elected: Mrs. Kina Bower, president; H. E. Rogers, vice-president; and Miss Mabel Lee, secretary-treasurer.

Miss Anna Ethelwyn Read was unanimously chosen director and Mrs. J. M. Stone pianist.

Phone your want ads to The Oregonian. Main 7072, A 6095.

No Needles to Change—Ever!

Every Pathe phonograph is equipped with the wonderful Sapphire Ball—a round polished jewel that does away with record wear and gives you ALL the tone of your records, full, round, rich. It is far and away superior to scratchy needles.

6 ADVANTAGES IN A JEWELLED Pathe

- 1 The Full Clear Tone of each individually toned instrument is produced by the clearest pure tone chamber and the famous Pathe Sapphire Ball. The music flows from the records; isn't scratched off.
2 No Needles to Change, on a Jewelled Pathe. The Sapphire Ball never wears out.
3 Plays All Makes of Records, and plays them better.
4 Records Do Not Wear Out. Every Pathe record is guaranteed to play 1000 times.
5 Always Ready to Play as soon as you slip on a record.
6 The Pathe Controlla enables you to play any record loudly or softly with the same Sapphire Ball.

AND the Pathe has ALL the features of all other talking machines.

THE ONE GREATEST THING

you can buy in a phonograph. You're going to buy a phonograph. All right—which?

Well, what do you want in a phonograph anyway? Pleasure, first. TONE—always! But mainly the pleasure you get out of it.

Right? All right—then the Pathe is your phonograph.

Even if it were no better in tone than all the others—the elimination of the changing of needles would be enough.

If its tone were merely as good as all the others—the fact that the record does not wear out would be enough.

But it's plain as daylight that a ball of sapphire, jewelled under the microscope and fitting perfectly into the half-circle of the sound-groove along which it smoothly glides, is bound to produce a TONE of purer quality than any you have ever known before.

Hear the Pathe That will decide!

Lipman Wolfe & Co. Announce

"Merchandise of Merit Only"

You may now secure the famous Pathe Phonograph and Pathe Records, in the piano department of Lipman, Wolfe & Co. Under arrangements just made we will carry every Pathe model from the most inexpensive to the exquisitely wrought art machines produced by this internationally known concern.

Plays All Makes of Records

Our Pathe record list likewise is complete—and every record is guaranteed to play a full 1000 times if played on the Pathephone. Come in and hear music—real music on the Pathe. Its qualities will delight you.

THE Pathe

in the excellence of tone, in the beauty of cabinet design, in the finish of the woods, and in the care of assembling, is the most perfect phonograph that human skill and genius can produce.

The Pathe Sapphire Ball which does away with old-fashioned steel needles glides smoothly around the record like a drop of water.

This round polished jewel fits exactly into every record groove and accurately reproduces every shading of the selection. The music flows off; isn't scratched off. No needles to change; no needles to buy; always ready to play. No wear on the records; every Pathe record is guaranteed to play 1000 times.

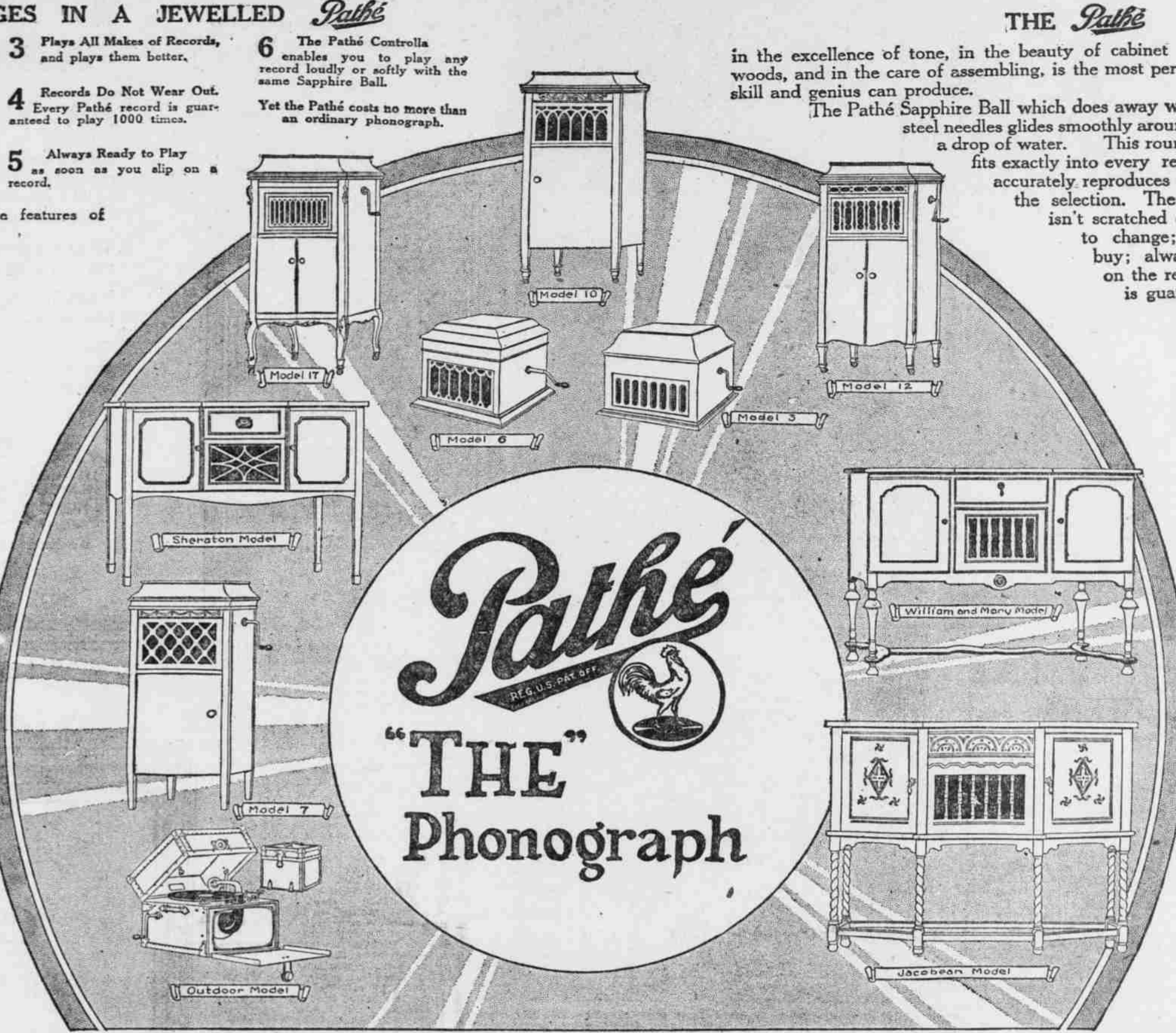
THE FAMOUS ARTISTS

of Europe and America are making records for Pathe, because they know that only on Pathe records are they sure that every shading and every expression of the selections as they interpret them, are faithfully reproduced.

Keep up with Broadway. Pathe has the latest hits first and best; the new songs that Broadway is whistling; the popular one-step, jazz and fox trot. The best orchestration of the new songs, and the most unusual novelties are always found on Pathe records.

And remember—every Pathe record is guaranteed to play 1000 times.

Pathe Costs No More than the ordinary phonograph



Pathe THE Phonograph

RUGS PLEASE MR. WILSON

ARMENIANS RECEIVE NOTE OF APPRECIATION.

Portland Natives of War-Torn Country Assist in Making President's Visit Comfortable.

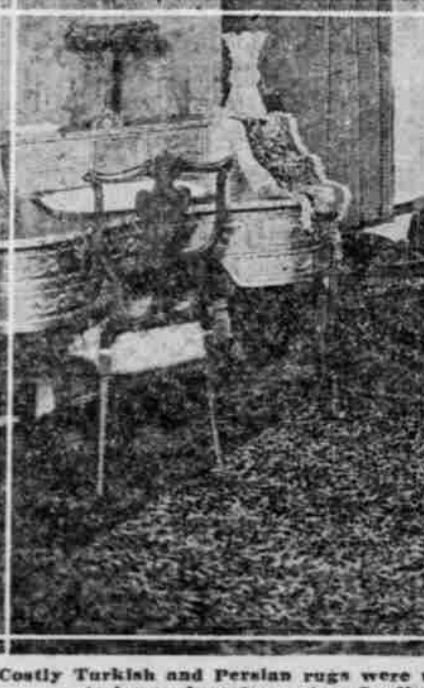
Increased interest in the agonies of Armenia is being taken locally on receipt of late cable news of massacres taking place in that war-torn country by Turkish mercenaries.

During President Wilson's visit to Portland these natives tried to show their gratefulness for the many efforts that he has put forth to free their country from oppression.

In central and eastern Oregon there are a number of contracts which are winter work and these will be kept going steadily.

The Dalles, widening the abandoned railroad grade can be done until the snow becomes too deep.

GLIMPSE OF PRESIDENT WILSON'S ROOM IN PORTLAND WHICH WAS RICHLY DECORATED BY LOCAL ARMENIANS.



Costly Turkish and Persian rugs were used for beautifying living quarters of chief executive and stage of auditorium, where he spoke. Cordial note of appreciation has been passed from the president.

JAPS TO BE SEWED UP

HOOD RIVER FARMERS PLEDGE NOT TO SELL TO ASIATICS.

Dangers of Impending Control of District by Aliens Are Cited in Explanation of Act.

HOOD RIVER, Or., Oct. 4.—(Special.)—The first public utterance of representatives of the newly organized league of orchardists, whose members pledge themselves against sale or lease of real estate to Japanese, has just been made by a publicly committee of the organization, composed of Roy D. Smith, J. H. Koberg and J. M. Taylor.

APPLE PACKERS ASK RISE

Advantage Is Taken of Labor Shortage at Hood River.

HOOD RIVER, Or., Oct. 4.—(Special.)—Apple pickers are here in sufficient numbers, according to C. B. Green, in charge of the federal free employment bureau, but the valley is badly in need of packers. It is ascertained by numerous growers that many of the licensed packers are taking advantage of the situation to demand more than the maximum 6 cents a box for the work.

Mr. Green reports that packing house sorters are also in demand.

Highway Builder at Wonder.

HOOD RIVER, Or., Oct. 4.—(Special.)—W. T. Eddy, formerly with the local office of the state highway commission, is now at Wonder, where he is with a crew of highway engineers.

Yakima to Hear ex-Diplomat.

YAKIMA, Wash., Oct. 4.—(Special.)—James M. Beck of New York, assistant secretary of state during the administration of Philander Knox, is to speak in this city this month in opposition to the league of nations.

Here is a Real Beautifier

No Matter How Badly the Complexion Is Disfigured With Pimples, Blackheads, Blotches or Muddiness Use Stuart's Calcium Wafers.

The action of Stuart's Calcium Wafers is so direct to the skin that



pimples, blackheads and such kinds of skin eruptions disappear. They simply cannot remain. Their redness and itching disappear. Proper food and Stuart's Calcium Wafers will surely take the place of all your creams and lotions and you won't need your powder puff.



Today and Monday Charles Ray

"GREASED LIGHTNING"

AND Charlie Chaplin

"POLICE"

Also MUTT & JEFF CARTOON

THE CIRCLE THEATRE

Fourth at Washington Open From 9 o'clock in the Morning Until 1 o'clock the following morning.

MURINE Night-Morning Keep Your Eyes Clean & Clear

Natural Phenomena Related to Human History

By Dr. JAMES E. TALMAGE Of the Council of the Twelve, Church of Jesus Christ of Latter-day Saints Salt Lake City, Utah.

Note: For free copies of other articles of this series, send request to the author.

We learn from Scripture that Adam's transgression brought about a fallen condition, not of mankind alone, but of the whole earth itself. In this, as in numerous other epochal events, wherein the direct interposition of Divine action is affirmed, nature is seen to be in intimate relation with man.

Thus the sins of mankind may produce calamity in the form of destructive phenomena, which we may properly call "natural" because of wickedness, and that those who had lived to hear were the more righteous of the inhabitants, to whom hope was offered on condition of more thorough repentance and reformation.

Contrast now the assurance given to Israel that by faithfulness in the seasons should be made propitious that nurturing rains should come, bringing such harvests that the people would lack room to store their produce. (See Mal. 3:8-12.)

Abject apostasy from the laws of God in Noah's time brought about the Deluge, in which "were all the fountains of the great deep broken up, and the windows [more properly flood-gates] of heaven were opened."

Enoch, who lived before Noah, was sent to proclaim repentance to the degenerate race, and so great was the power and authority vested in him that "he spoke the word of the Lord, and the earth trembled, and the mountains fled, even according to his command; and the rivers of water were turned out of their course."

He foresaw the coming of the Noachian flood, and the events of history, including the Savior's ministry, down to the days of the Lord's second advent, when "the heavens shall be darkened, and the earth shall be hid, and the rocks shall be moved."

On the Western Continent, widespread disruption signified the Savior's death; and destruction befell the wicked who had flouted prophetic warnings and inspired admonitions to repentance. Many of the Neophytes had forgotten the signs and wonders by which the fact of the Lord's birth had been made known, and had fallen into abominable wickedness.

It may be argued that the storms, earthquakes, and other destructive occurrences heretofore cited, are not natural, but supernatural phenomena, specially inflicted by Divine interposition. Say rather that these happenings are supernaturally directed, following naturally and inevitably the sins of mankind and the unregenerate state of the race.

"The earth also is defiled under the inhabitants thereof; because they have transgressed the laws, changed the ordinance, broken the everlasting covenant." (Isa. 24:5.)