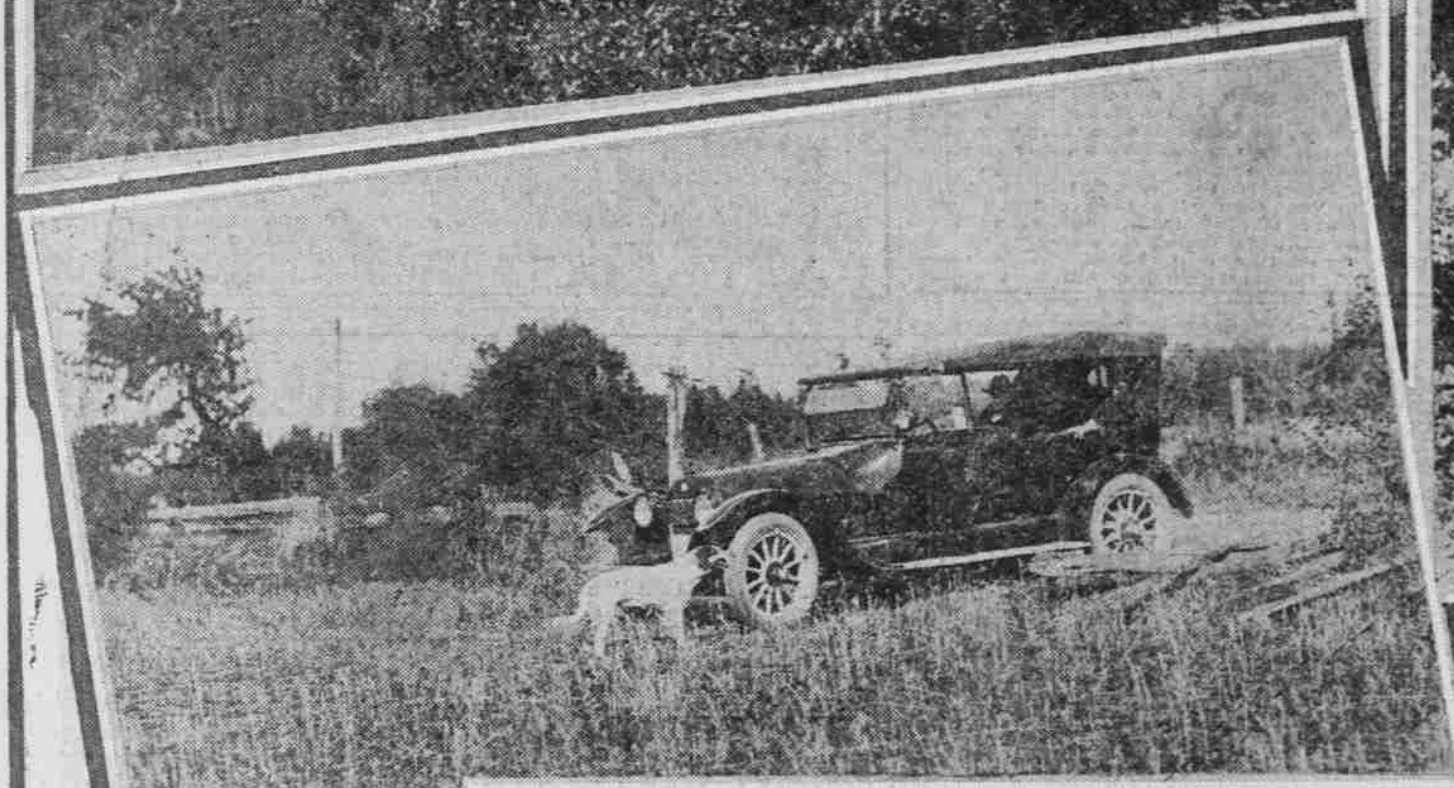
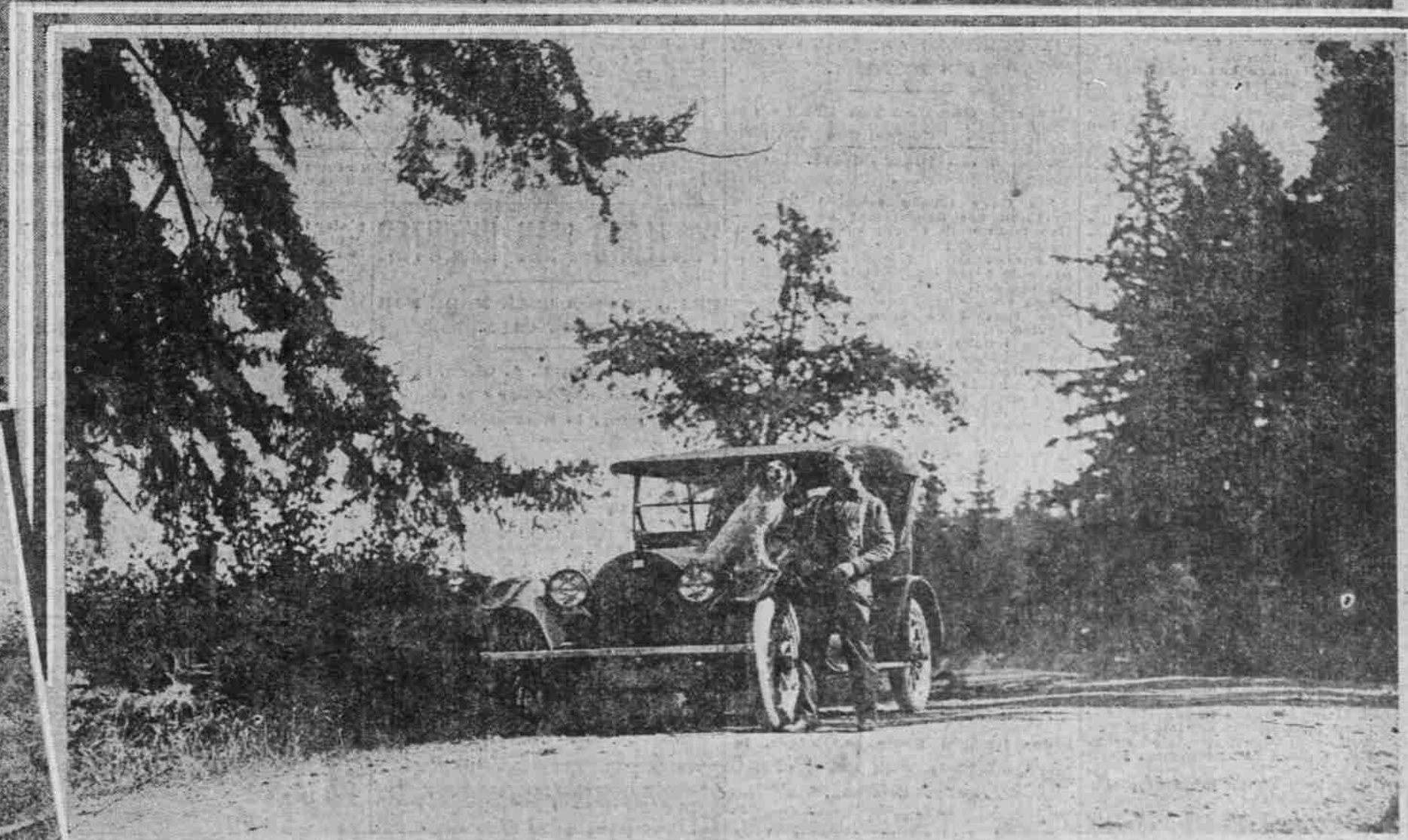
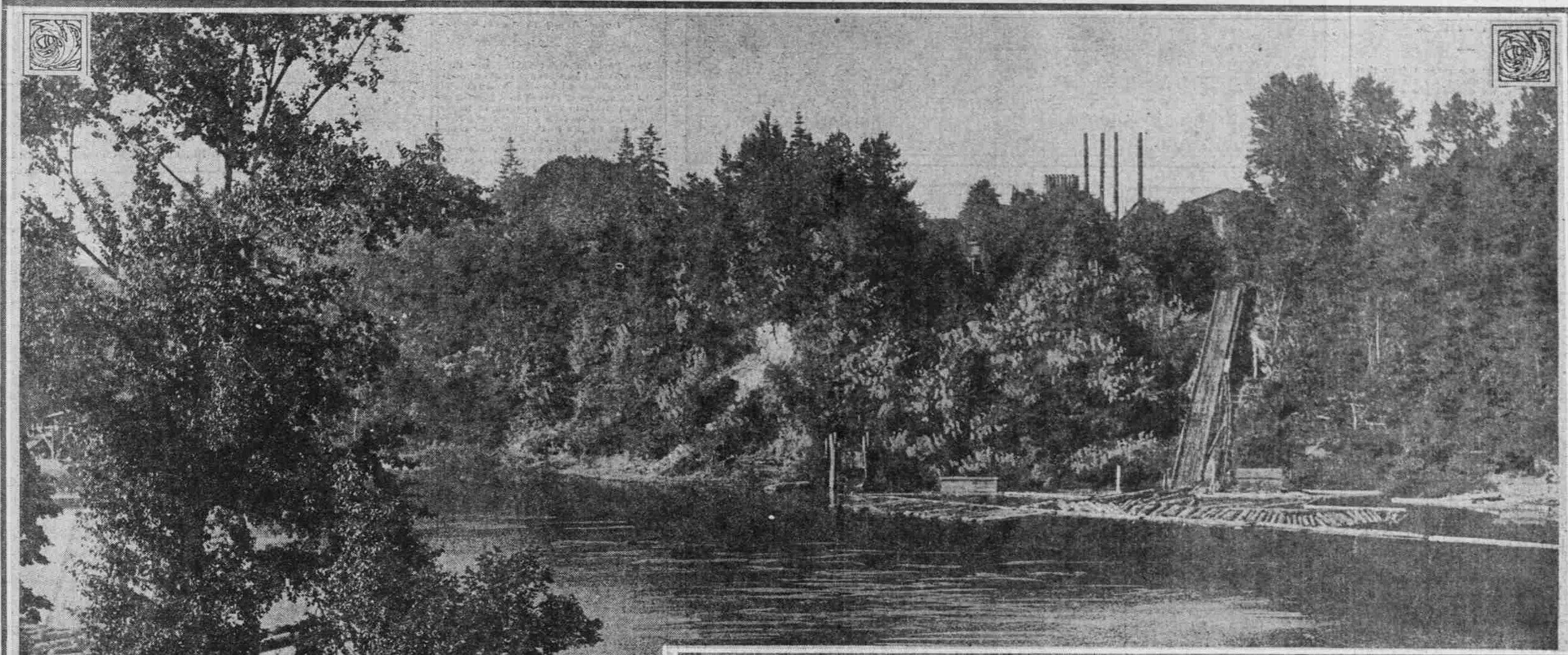




## LOGGING THE ROUTE TO SALEM STATE FAIR IN A BUICK

When You Drive to the Fair This Week, Take Capital Highway to Newberg and From There Travel Over St. Paul Route, Which Is in Much Better Shape Than Others.



**By L. H. GREGORY.**

**T**HIS is the week of the annual state fair at Salem, and naturally the question arises, "What is the best automobile route to Salem?"

At this writing there is only one good automobile route from Portland to Salem. That is the one by way of Newberg, St. Paul and Hopmere, usually spoken of as "the St. Paul route." It crosses the Willamette river on a long and high wooden bridge at Newberg, whence it traverses a level farm country with not a hill on it and enters Salem over the river road from the Wheatland ferry.

A lot of motorists seem to have the idea that the east side Pacific highway is now paved and open to travel all the way to Salem. This is decidedly erroneous. Unless you have enough of a drag with the contractors to drive through the barricades and get away with it, you have to jazz over a lot of bad detours on this route, bump over rough stretches that would make Job curse and, in short, make a long and hard trip out of it. Keep off the east side highway until paving operations are completed.

The same is true, though to much less degree, of the west side Pacific highway by way of Newberg, Dayton

*(Continued on Page 3, Column 1.)*

**W**ITH the main east side Pacific highway still blocked for paving most of the way between Aurora and Salem, and the west side highway in bad shape for the same reason between Dundee and Dayton, motorists bound for Salem and the state fair this week will find the Newberg-St. Paul-Hopmere route by far the best. These views on the St. Paul and east side routes were photographed last week on a road-logging trip in a Buick six with Frank V. Smith of the Howard Auto company.

The upper picture shows the Willamette river from the high bridge across it near Newberg, on the St. Paul route. In the left center is a field on one of the numerous detours on the east side route, with Kim, Frank Smith's prized bird dog, in the foreground. Kim had a nice workout in the field. To the right center is a view of Kim, Kim's master, and Kim's master's Buick, at an attractive bend in the St. Paul road.

Below, left, is a stretch of new pavement now open on the east side highway. But most of it is not open. To the right, a big oak tree in the road between St. Paul and Hopmere.