

NATURE'S PROCESSIONAL



Fig. 1. Clematis, Female Plant.



Fig. 2. Clematis, Female, Climbing A Blade Of Grass.



Fig. 3. Wild Vetch.

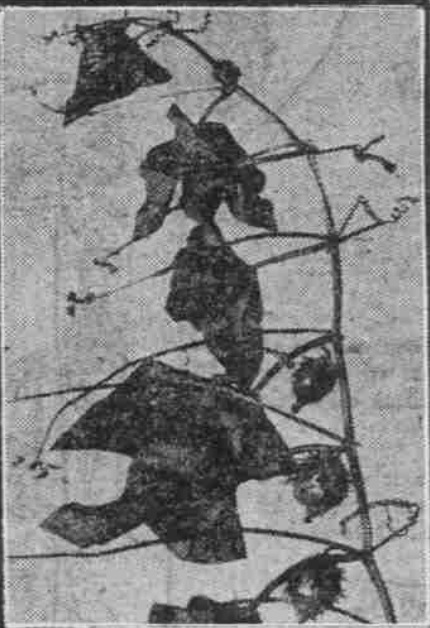


Fig. 4. Wild Cucumber.



Fig. 5. Virginia Creeper.



Fig. 6. Boston Ivy.

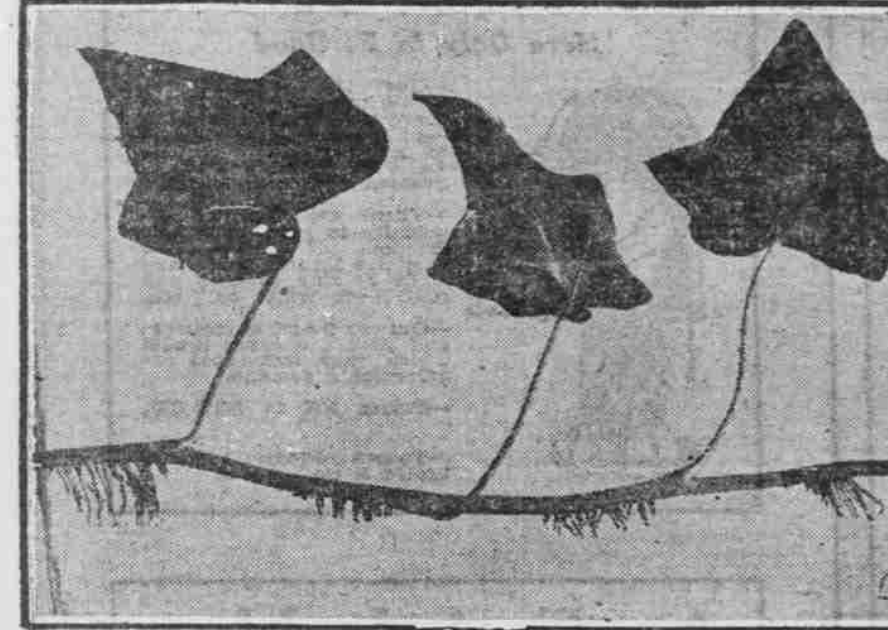


Fig. 7. English Ivy, Climbing Roots.

BY ALBERT RADDIN SWEETSER,
Department of Botany, University of Oregon.

UNIVERSITY OF OREGON, Eugene, Sept. 20.—(Special.)—Some lowly plants are satisfied to lie prone on the nourishing earth and obtain the leaf exposure and exposure necessary for the constructive process of growth by spreading over much surface. Such is the carpet weed, that troublesome interloper of our gardens. This is effective as long as room is sufficient, but when the struggle becomes more severe and plant crowds plant in the struggle, our lowly friend will soon be choked out by others which, stiffening their bones, have lifted their stalks up into the life-giving sunshine. Numerous plants having the desire and necessity for reaching sunlight, yet not sufficient rigidity of stem for their own support, must needs have help in the struggle, such as the plant climbers. Here belongs the familiar morning glory, likewise the hop, whose pole-climbing proclivities have been outdone by its soaring market price. Could you have watched it in the spring you would have seen the tip of the young shoot circling around, in the same direction as the hands of a watch, and when successful in finding a support spiraling its way upward. You who, with ungloved hands, have stroked its

stems, whose silky tails are so ornamental, for scientific names is from the Greek, meaning a vine.

Figure 2 is a male plant with numerous stamens but no pistils, hence, after shedding its pollen it falls away. In this figure its method of climbing is shown. The leaves are compound, composed of several leaflets and are one at the right has found a blade of grass around which it has twisted its leaf-stalk and so is hoisted in the upward climb. This is repeated wherever a leaf finds any support that it may grasp.

The vetch and several others of the pea family, replace some of the terminal leaflets of their compound leaves with tendrils that reach themselves to nearby supports. Fig. 3. Hence the value of planting with the vetch some rigid grain on which it may climb.

Tendrils Aid Plants to Climb.

The Oregon wild cucumber or man-in-the-ground, Fig. 4, whose monstrous root often becomes such a troublesome pest for the farmer, illustrates the method adopted by the pumpkin family to reach vantage points for its development. Opposite each leaf is perhaps an adaptively modified one, a tendril which reaches out and sweeps around and if fortunate enough to come in contact with something firm, attaches itself to it and, coiling like a corkscrew, draws the plant closer to its support and fastens it more firmly.

The Virginia creeper or woodbine, has branched tendrils which turn from the light and hence toward the trunk or wall upon which it is growing, and having found it, develops at the ends of the branches, tiny disks which take firm hold of the smooth surface by coiling, attach the vine firmly to its support (Fig. 5).

The Boston ivy (Fig. 6) employs a similar device.

The English ivy (Fig. 7) uses a method different from any of the above. On the side of its stem away from the light it develops numerous fine roots which attach themselves firmly to the substratum on which the vine is growing, but do not absorb any nourishment from it. As the stems get older these roots may wither and form a bearded fringe along their sides.

These are but a few of the numerous plant climbers, but sufficient to attract the attention of the nature lover and arouse his interest and curiosity to search for other examples.

COLLEGE PLANS MUSEUM
Professor Horner Wants Collection of Northwest Relics.

OREGON AGRICULTURAL COLLEGE, Corvallis, Sept. 20.—(Special.)—A museum of Pacific northwest antiquities with such information concerning them as may be obtained will be started at the college under the direction of Professor J. B. Horner, head of the department of history. Professor Horner desires that a more complete record of the prehistoric races may be accessible to the public. When sufficient information is obtained an archaeological chart of the state will be prepared and to this end co-operation of all who have data is requested.

Professor Horner wants to know the location of ancient burial mounds, when and by whom discovered, whether built of earth or stone, dimensions, state of preservation, whether human skulls were found and how they contrast with modern skulls, what other relics were discovered and detailed information in regard to their discovery.

HOOD TO BE REPRESENTED

Many Students From Valley to Be at U. of O. and O. A. C.

HOOD RIVER, Or., Sept. 17.—(Special.)—The University of Oregon and the Oregon Agricultural college will have large representations of students from Hood River. Local students who will resume their work at the varsity are Miss Kathryn L. Baker, Miss Catherine M. Baker, Miss Ila Nichols and Wilbur Hoyt. New students from here going to Eugene will be Miss Mary Samuels, George Samuels, Miss Lenore Cram, Miss Margaret Berry, Miss Helen Carson and Merton Polts.

Miss Frances Castner will resume her work at the Oregon Agricultural college. New O. A. C. students from here will be Miss Frances Moe, Mark E. Moe, Myron Hoyt, Miss Ruth Berry and Roger Blackman.

Old Glory Floats in Belfast Harbor.

BELFAST, Ireland, Aug. 20.—Old Glory was floated from the masthead of a merchantman in Belfast harbor the other day, the first time in a great many years. She is the Lakeside, bringing a cargo of many things which Belfast wants, and is the first of a line of American ships which will ply fortnightly between New York and Belfast. Her appearance here is taken as proof that Americans are not going to neglect the Irish trade.



Red Feather Complexion Powder

is more than a cosmetic because it contains certain ingredients which tend to contract the pores of the skin, producing that velvety softness, and because of peculiar transparent and adherent qualities which cause it to blend with the skin. It is not a mere surface coating. The result is a natural and genuine effect.

White, natural and brunette. In hinged-cover boxes 50c. Sent postpaid anywhere in the U. S.

The Remiller Co.
230 W. 17th St. New York
Sold in all Drug Stores, other good drug stores and Department Stores

—Our Artist Glass Cutter designs and cuts beautiful patterns in table glassware.
Sixth Floor.

Lipman Wolfe & Co.

"Merchandise of Merit Only"

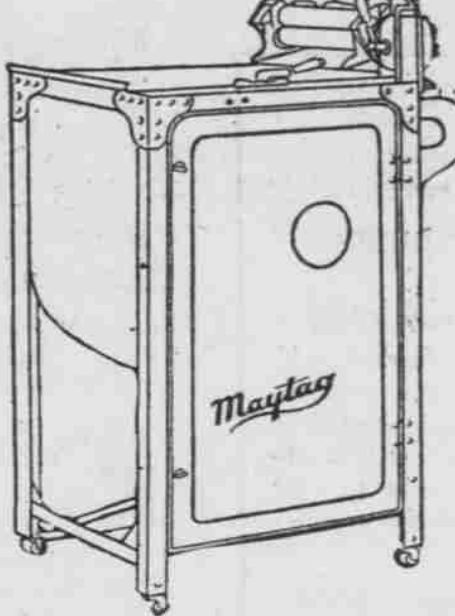
—The "Shorthand of Embroidery" is a term aptly applied to the work done by the Marvel embroidery machine. See it demonstrated.
Fourth Floor.

Labor-Banishing Devices Are First Principles in Domestic Economy

—Autumn, the season of new homes—and of homes already established—finds its needs in the way of proper kitchen and laundry equipment, furnishings and decorations, completely anticipated here.

In the Household Efficiency Section

Baby Grand Maytag Electric Washers

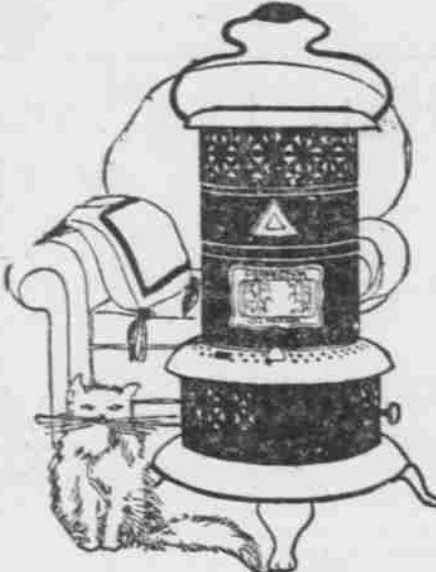


—Announcing the arrival of a carload of these machines so many people have been waiting for.

SOLD ON TERMS TO SUIT

—Let us send one out for you to demonstrate one week in your own home at our expense.
—The Maytag Electric Washer is the safe, satisfactory and economical solution of the family wash problem.

Perfection Oil Heaters Smokeless—Odorless



—They heat 10 hours on a gallon of coal oil.
—They warm chill rooms and dispel gloom.
—Come and see them.

SAVE FUEL TIME AND LABOR

—Still all kinds and sizes of jars in the sale of jars at less than regular prices.

—Miss Stoddard, our Interior Decorator, will gladly give you suggestions on home decorations—Fifth Floor.

A NEW SHIPMENT OF GENUINE RED CEDAR CHESTS

—Mrs. Clarence Hunt conducts daily classes in lamp shade making. No charge if materials are purchased here—Fourth Floor.

Interior Decorating

—Hangings give decorative effects that nothing else in the room is able to achieve—we are amply prepared to supply you with curtains and draperies for every part of your house—and will give you estimates on both new and old work.

—Below are two unusually good specials offered in this section:

Marquette Scrim Curtains \$2.95 and \$3.45.

—Firmly woven and graced by dainty lace edges—and attractive insertions add charm to others. 2 1/4 yards long.

New and Attractive Cretonne Special, 59c Yard.

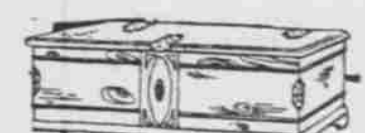
—Gay cretonne adds a festive appearance to any room, however dull or unless it may be. The new patternings are particularly appealing in color and design.

—This is especially good for living and bedrooms.
—Fifth Floor, Lipman, Wolfe Co.

OF GENUINE RED CEDAR CHESTS

—With and without trays. Delightfully woody.

—A pleasing addition to any room, and a good way to keep your choice bits of apparel away from dust and moths.



\$18.25, \$20.00, \$22.50, \$27.50, \$32.50, \$35.00.

—Fifth Floor

Limited Number of Hoover Sweepers

Important to Order NOW

—Owing to the impossibility of obtaining them and the great demand for Hoover Vacuum Cleaners, we advise you to get your order in immediately, as we were able to secure only a very limited number.
—"It beats as it sweeps as it cleans."
—Electric Corner, Street Floor.



Table Glassware in a Sale

Thin Floral Cut Glass.

—Goblets, \$1.95 set of 6.
—Sherbets, \$1.95 set of 6. (High or low footed)
—Tumblers, 95c and \$1.19 set of 6.
—Sixth Floor, Lipman Wolfe & Co.

For Those Who Go Away

Mendel Drucker Dustproof Wardrobe Trunks

BAGS—A Complete Line
—Ranging in price from \$7.50 to \$60.

—Special—16-inch bag, \$14.
18-inch, \$14.50. Cut bag, leather lined, sewed corners.

Suit Cases, \$2 to \$50 Full Line.
—Special, 24-inch leather case, heavy 1 1/8-inch leather straps all around, \$13.50.

—18 different styles and sizes.
—Special open-top trunk, \$51.50.
—With all conveniences—including ten hangers—at the old special price.
—Wardrobe Steamer Trunk, \$35.

THE FAMOUS MILLER-CLOSMAN BAGS HERE EXCLUSIVELY IN PORTLAND
Fifth Floor, Lipman, Wolfe & Co.

This Store Uses No Comparative Prices—They Are Misleading and Often Untrue