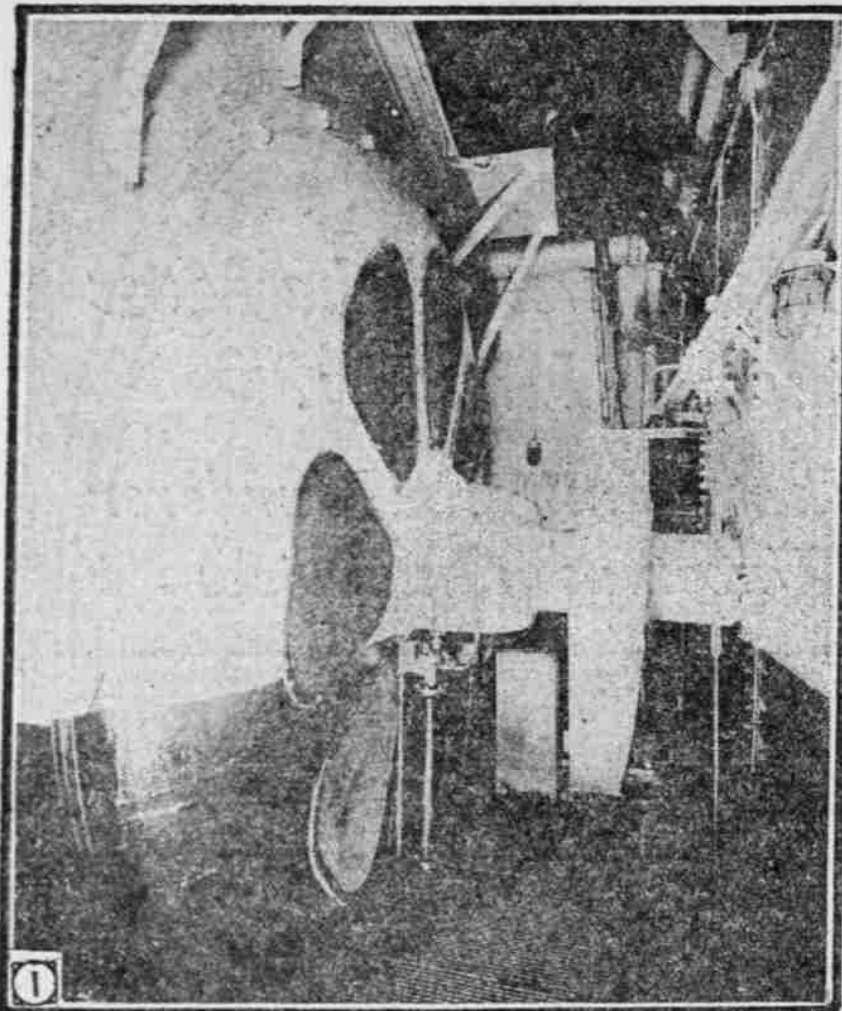
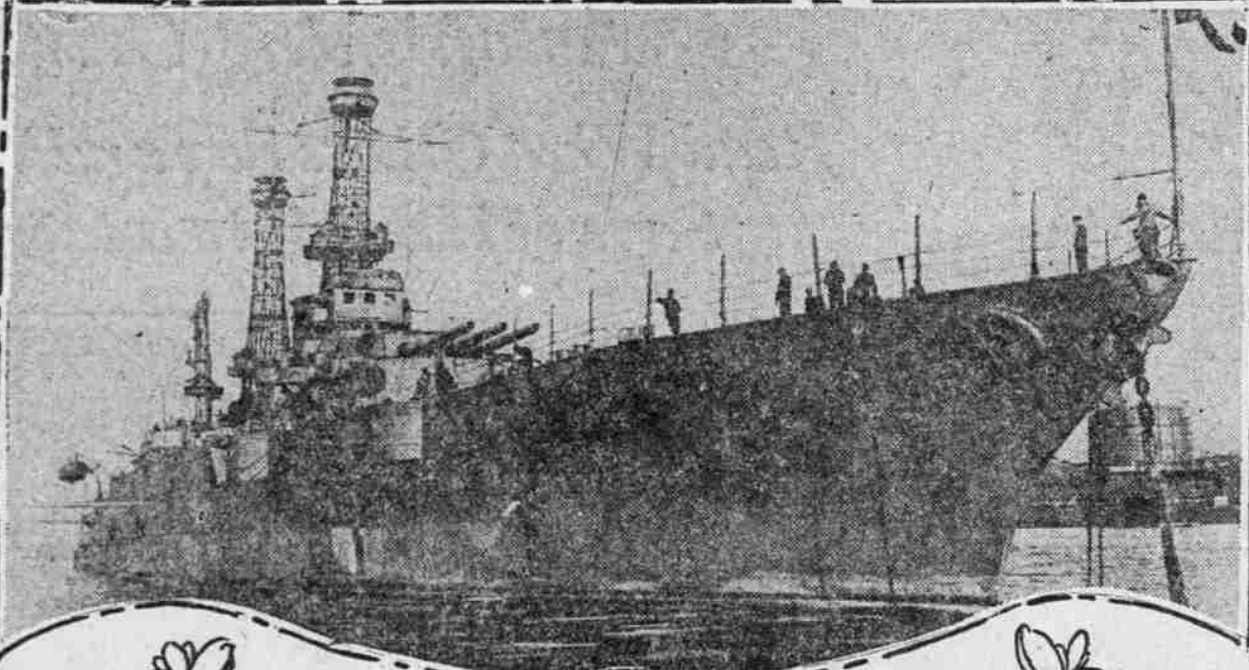


U.S.S. NEW MEXICO

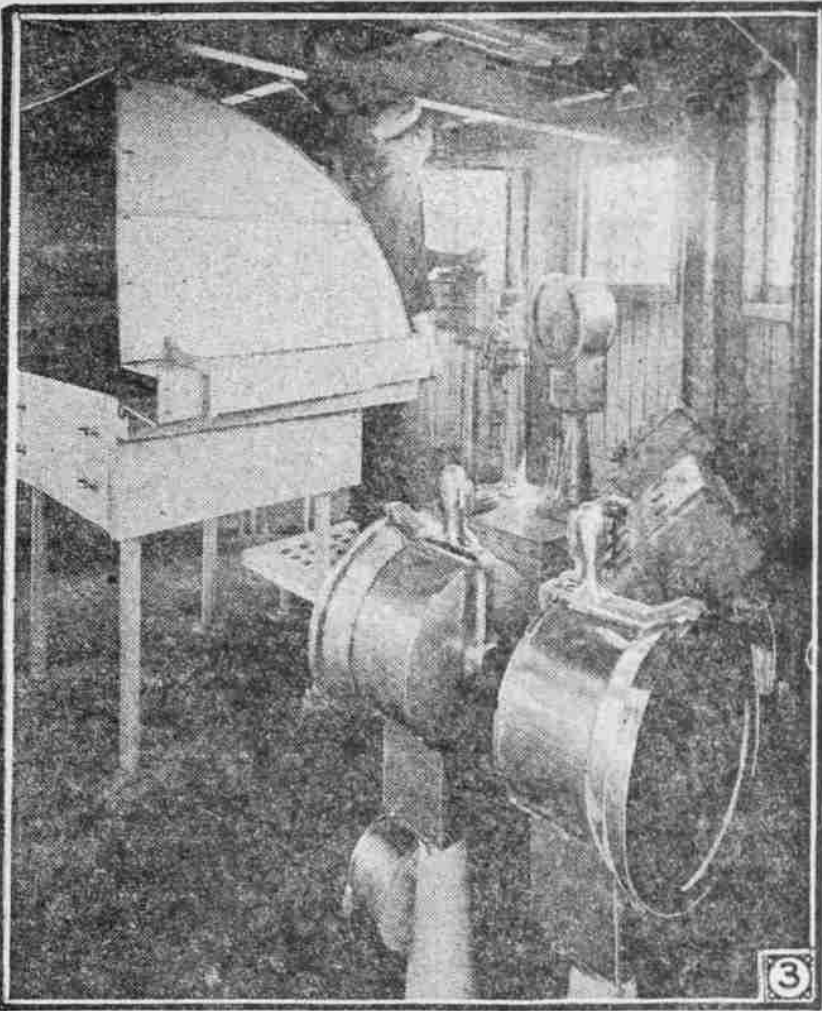
FIRST
ELECTRICALLY PROPELLED
BATTLESHIP IN THE WORLD



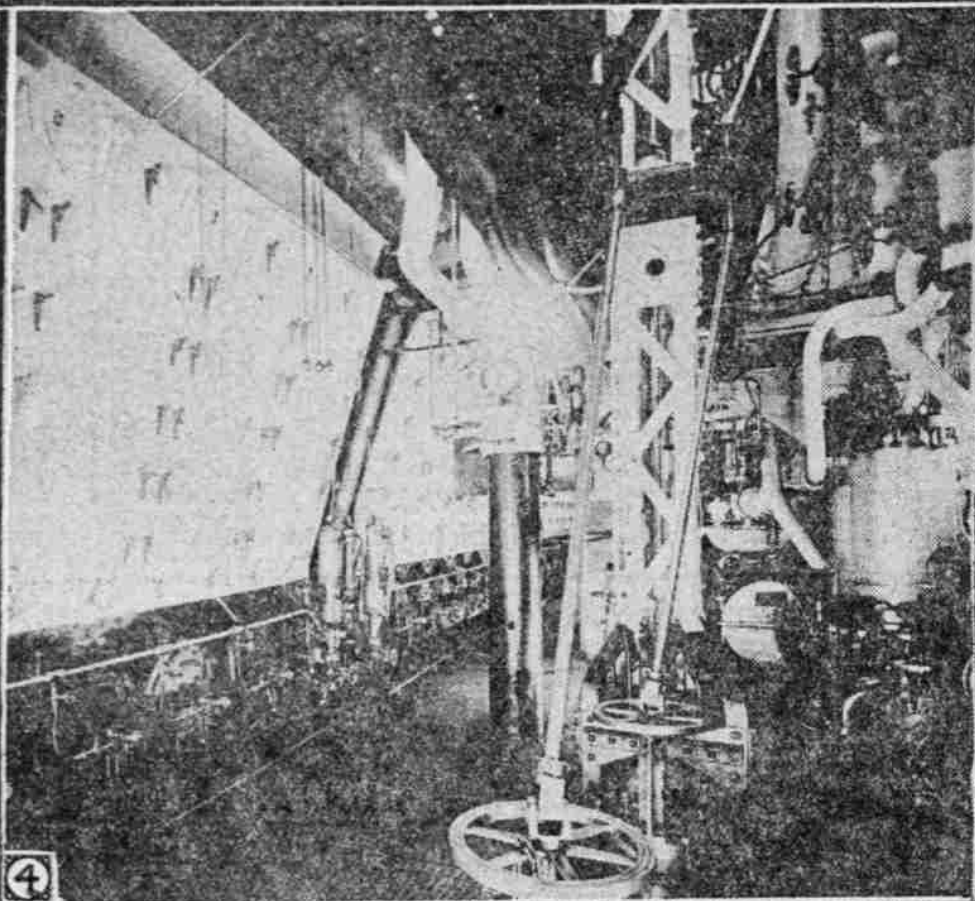
1



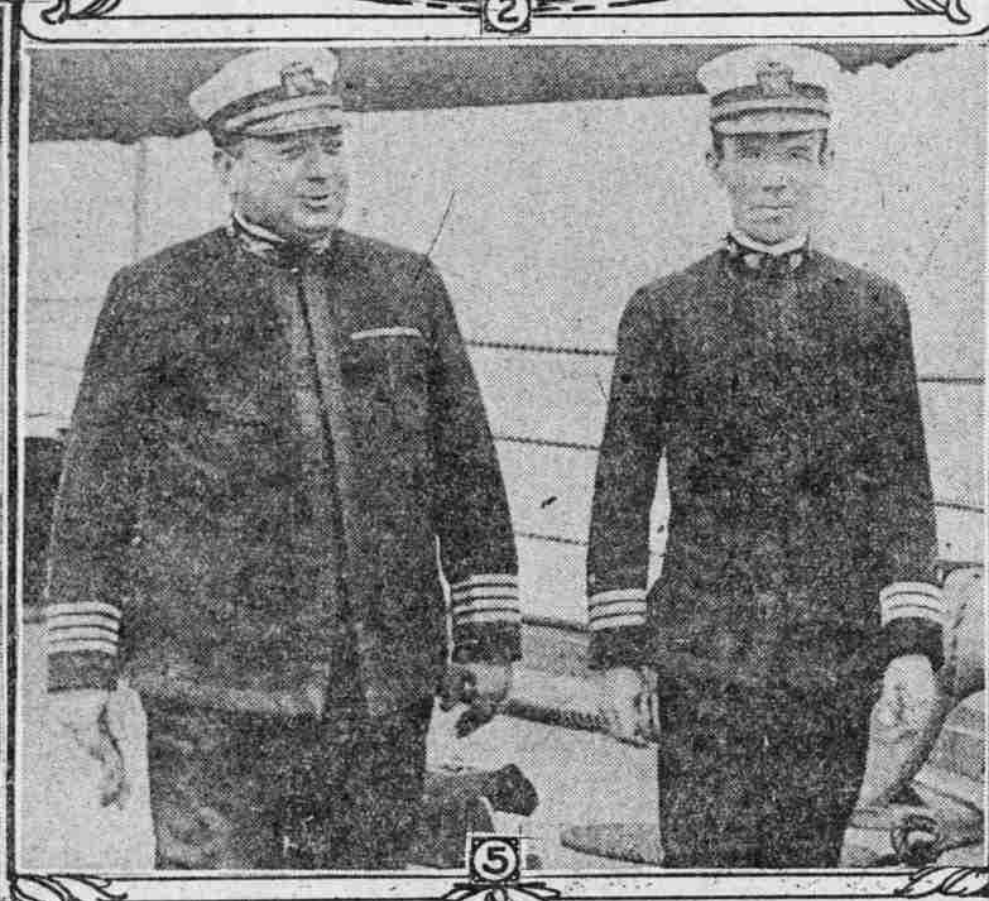
2



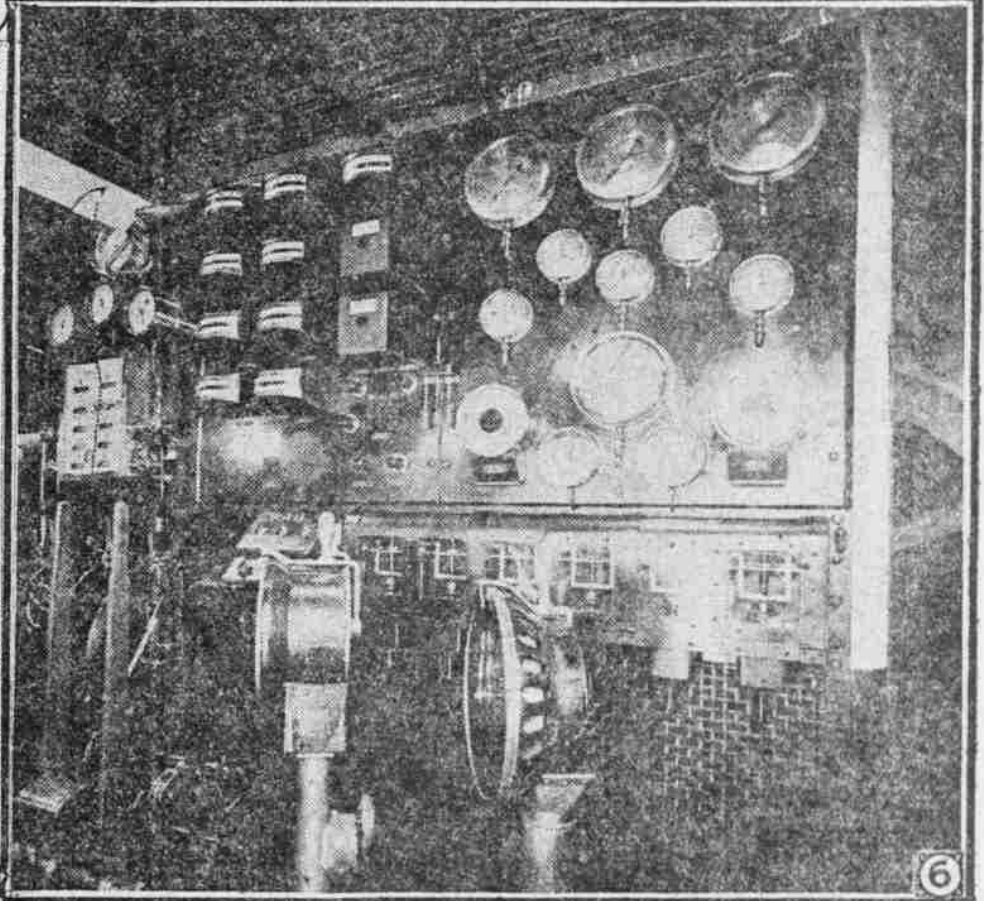
3



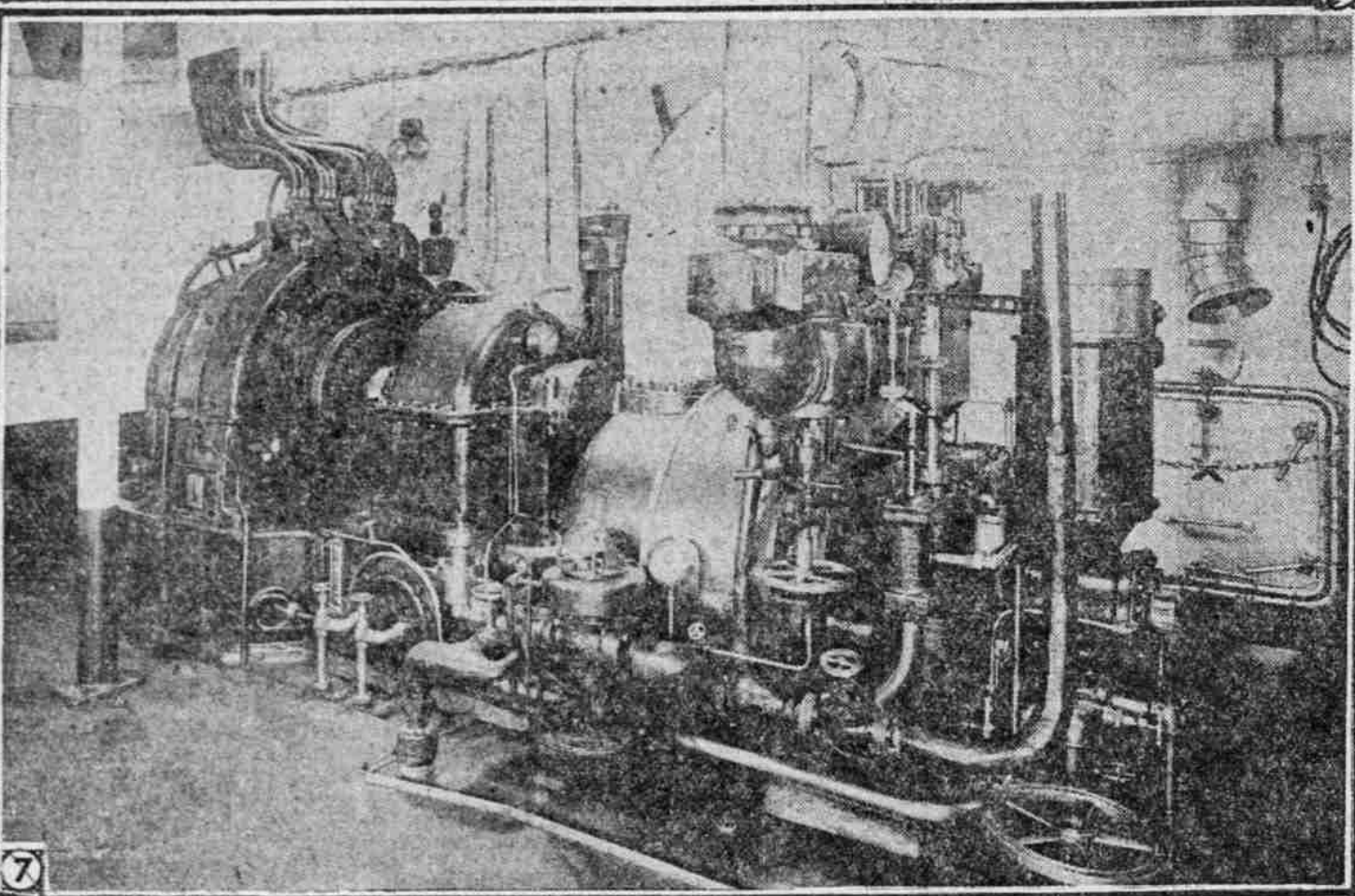
4



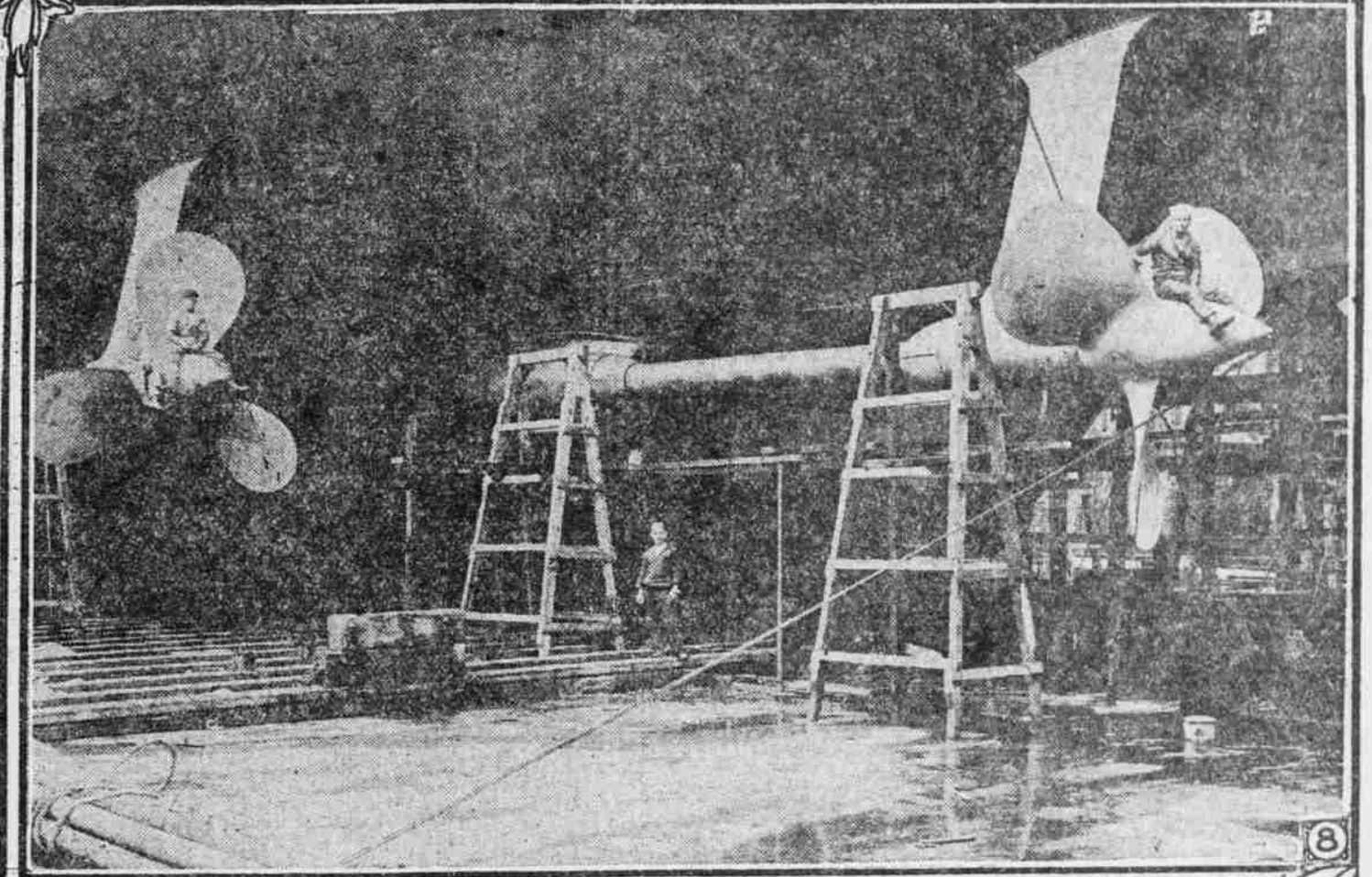
5



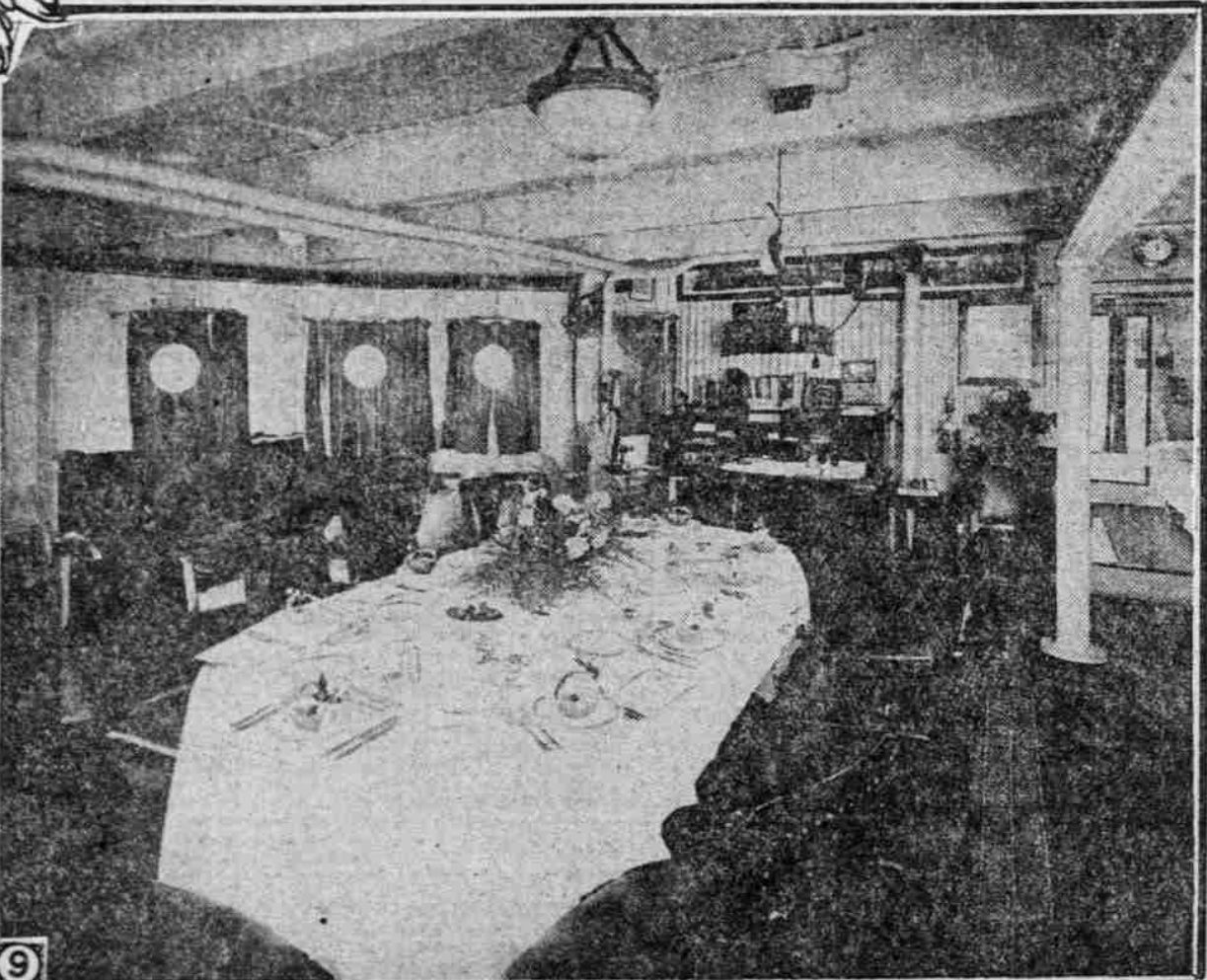
6



7



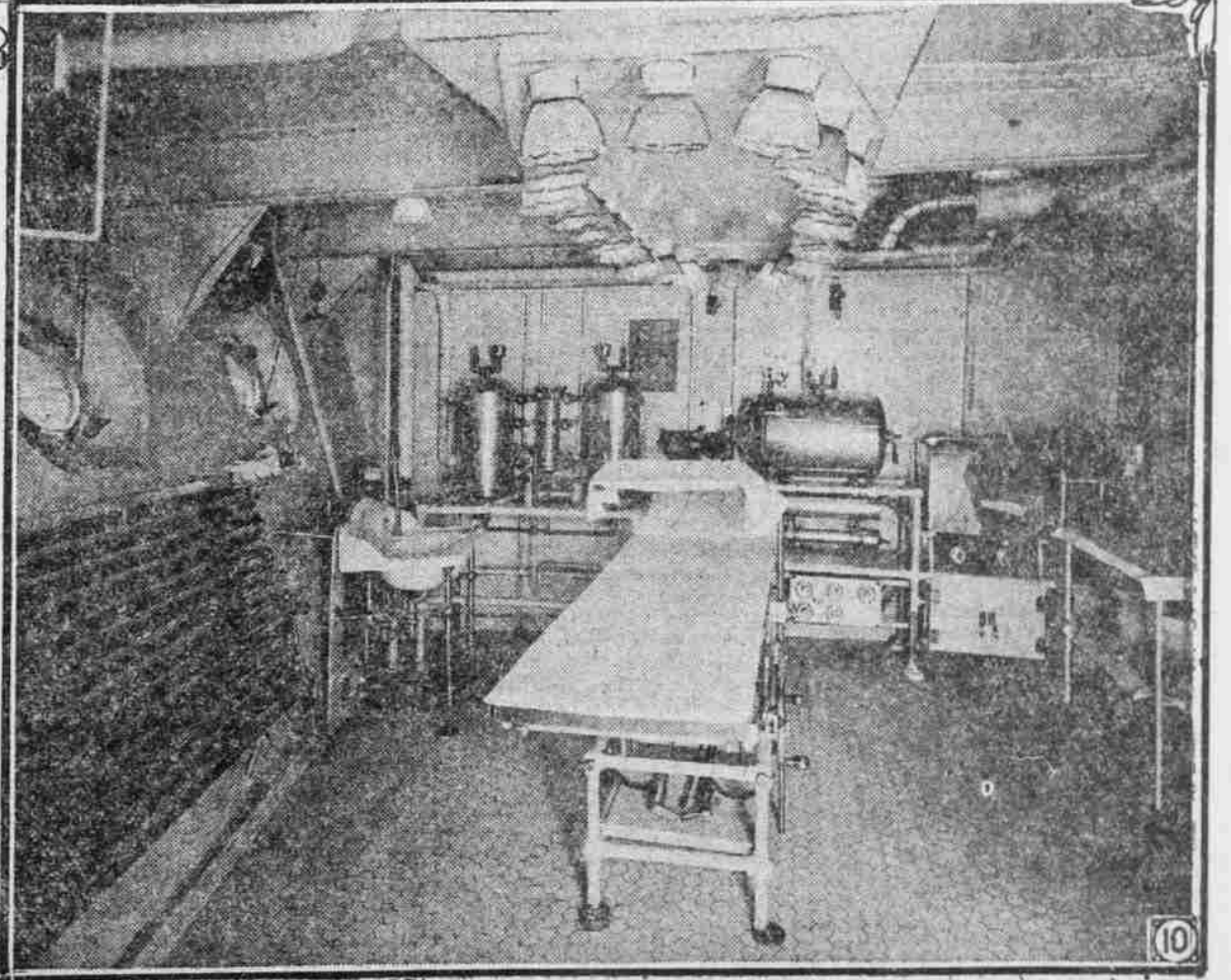
8



9

PHOTOS BY
GENERAL ELECTRIC COMPANY.

1. One of huge electric motors, 12 feet high and 12 feet wide, driving starboard inboard propeller. It generates 7000 horsepower and derives its current from two turbo-generators, which, in turn, are operated by steam from the big boilers.
2. U. S. S. New Mexico.
3. Navigation bridge with steering control device and electrical apparatus for transmitting signals to engine room.
4. Main boiler room showing three of the nine immense boilers. Oil burners below the boilers. The New Mexico uses fuel oil.
5. Captain A. L. Willard and Commander Lannon.
6. Main central apparatus and switchboard.
7. Turbo-generator unit—one of six which produce the current for lights, fans, ventilators, searchlights, wireless, gun turrets, etc. The six sets combined deliver 2400 horsepower or 1800 kilowatts.
8. Two of the four propellers, illustrating their great size.
9. Cabin of commanding officer.
10. Operating room adjoining hospital quarters. Electrically heated and with special illumination over operating table.



10