

COURT-ROBBER GANG STEALS MOTOR CARS

Autos Taken in West to Supply Eastern Trade.

SERIAL NUMBERS ALTERED

Latest Methods of Thieves Show an Ingenious and Carefully Planned Campaign.

The ramifications and details of a new and amazing system of automobile stealing are revealed in the weekly bulletin of the theft bureau of the Pacific coast automobile underworld conference called last week at a conference by Detective John W. Powell, manager of the Los Angeles division of the conference, says an article in the Los Angeles Times. As a result of the bringing up of a gang of automobile thieves in the east, who have operated in virtually every city in the east, middle west and principally Los Angeles in the west, the details of the countrywide traffic in stolen automobiles were learned.

Conference detectives who investigated the operations of the gang and received statements from members of the gang following the round up of a score of alleged thieves reported that new methods were adopted by the ring leaders and central figures of the "stolen car trust" in gaining possession of motor vehicles.

Least Thief Technique. These features regarding the up-to-the-minute auto thief have been noted by conference detectives, according to the bulletin:

The smaller and less expensive autos are not so much in demand by transcontinental thieves.

Expensive automobiles are selected by the thieves who transport them to the middle west and east, change serial numbers and all assembly record numbers and dispose of them to innocent buyers for handsome sums.

Not only have the thieves selected large numbers of expensive automobiles in Los Angeles for their eastern "fences" but the authorities of virtually every middle west and eastern city report that a larger number of the more expensive machines have been taken away.

Realizing that an expensive automobile is carefully marked with serial numbers and a score of more marks of identification, the central figure of the "stolen car trust," according to admissions of members of the gang, sent agents or "lifters" into several automobile factories in the middle west and east under temporary employment in order that the systems of identification could be fathomed.

Recent operations of the nationwide gang have been revealed, according to the eastern conference authorities.

Secret Marks Are Used. High-priced cars stolen in the west and east have been transported only after a thorough examination had been made and every serial number and identification mark taken down and thrown off suspicion by police officials encountered en route.

The cross-continent thieves, it has been revealed in the most advantageous routes from east to west, and west to east, having no fear of the authorities found en route. The alterations in the serial numbers of the machines and the destruction of other identification marks virtually protected the thieves until their operations were suddenly halted by wholesale arrests.

The bulletin suggests a system whereby the motor vehicle owner may identify the car with a serial number which alters serial numbers and changes or destroys marks of identification.

Detective Powell urges motor vehicle owners to use the following method: stamp the serial and motor numbers on as many secret places on the car as possible. Record the information and send it to the police. The serial numbers on the run and the automobile has put him to flight.

Although horses ceased to be a factor of consequence for pleasure driving or transportation purposes several years ago, they continued to increase in number up to 1918. There were 1,750,000 more horses in the United States in 1917 than there were in 1905, but the tide turned last year, when the number of equines decreased by 21,000.

A large proportion of this decrease may be attributed to the use of horses in the war, but against this must be set the fact that during the same year hogs increased in number 5,800,000; sheep 1,000,000; cattle several hundred thousand. The drain on these animals for war purposes was undoubtedly much heavier than on horses.

It is also significant that horses showed a sharp decline in value per head in spite of the war demands and increased numbers. For the first time in a decade they were rated below \$100 a head, average value, making a decrease in value of horses for the one year of \$125,251, while all other classes of animals showed large increases.

Tool Arrangement.

An admirable idea in the arrangement of tools in the home garage is to give each tool a number. This number is painted on it. The same number is painted on the falls or racks in the place where the tool belongs. In this way it is a simple matter to find each tool to its proper place so that it is ready when it is next needed.

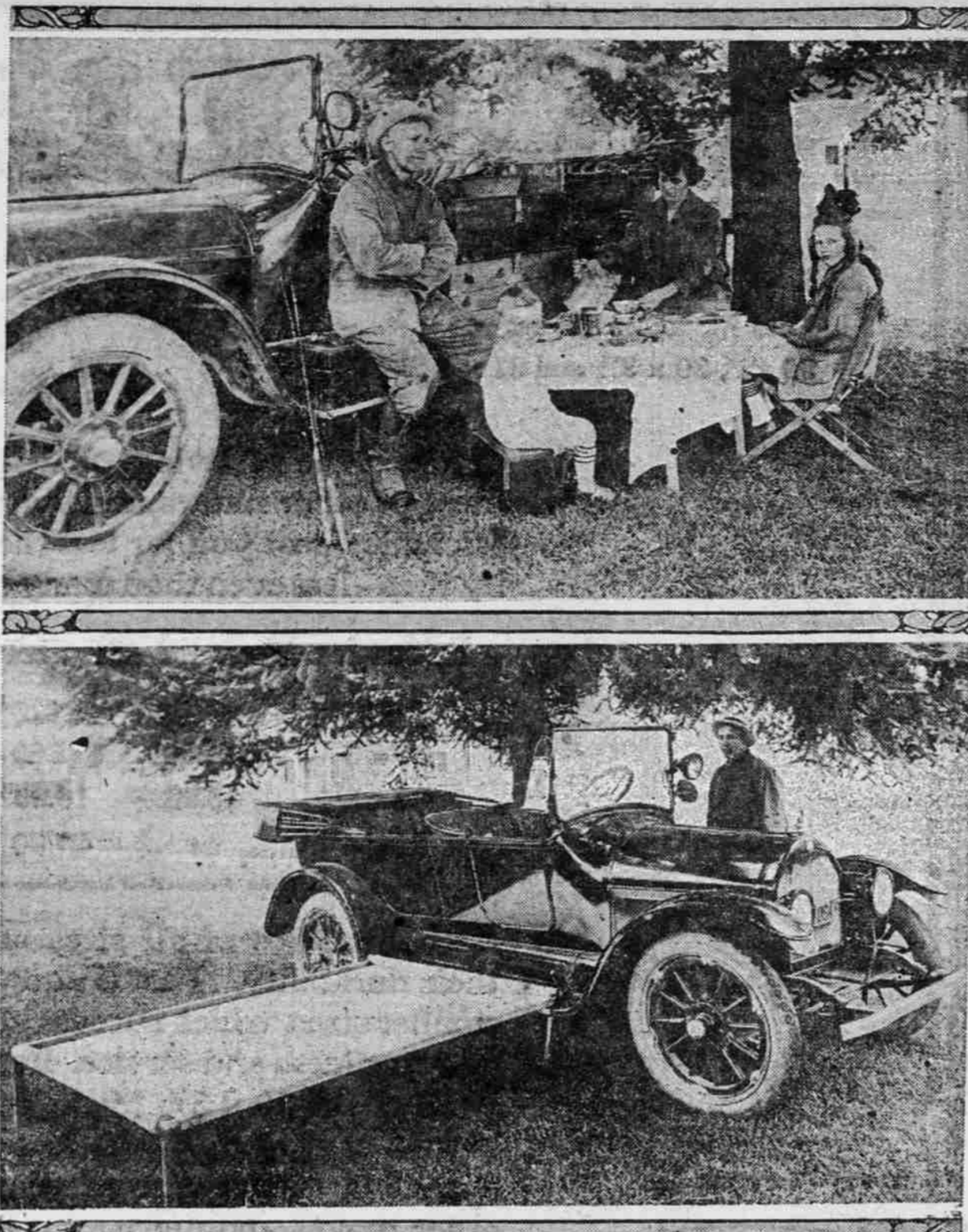
Hinge Lubricant.

Lined oil mixed with a small amount of graphite is recommended as a lubricant for door hinges and latches, which seldom receive attention in this way. Ordinary cylinder oil has a tendency to run, which is not desirable at this location because the clothes of passengers are likely to come in contact with it.

Building Battery Posts.

It is possible to build up battery posts that have worn down by slipping a section of cast iron pipe, cut to the proper length over the old post and then melting new post metal in by the means of an acetylene torch. The piece of pipe acts as a cup to hold the new metal as it is melted.

PORTLAND POLICE CAPTAIN HAS HANDY AUTO CAMPING DEVICE OF HIS OWN INVENTION.



Above—Top of cupboard on running-board, with extension, makes convenient table for Inskip family. Below—This canvas bed is equipped to roll up compactly on running-board.

Chester A. Inskip, captain of police, has been touring Oregon beaches with a camping outfit which he has built on his five-passenger automobile. The outfit includes a homemade bedstead, two cupboards and a table, all built so that they may be folded on the running-boards of the car.

The camping party consisted of Captain and Mrs. Inskip and their two children, Helen, aged 11 years, and Chester, aged 4. A bed for the children was made up by combining the front and rear seats of the automobile. The parents occupied the folding bed. All slept under a canvas fly.

The folding bed consists of canvas stretched between two pieces of two-inch gas pipe, strengthened at head and foot by two 1 1/4-inch oak sticks. One gas pipe is fastened to the running-board on the right-hand side of the car. At each end of that pipe is a cogwheel kept from turning by dogs. When the bed is unrolled the sides, head, foot and the legs are connected by thrusting the several pieces into a "wide-mouthed" plumber's "L" and the whole bed is held together by winding the stationary roller until the canvas is taut. The roll on the running-board is then kept from turning by the dogs.

On the left-hand running-board are two cupboards, one above the other, with the top one on a level with the auto door. The lid of the lower cupboard opens downward to form a table, which is enlarged by an extension piece. The lower cupboard contains an ice chest and the upper has storage space for coffee, sugar and other non-perishable supplies.

Captain Inskip visited Seaside, Tillamook, Newport and other points on the beach.

USE OF TRAILERS GROWS

GAIN GREATER IN PROPORTION THAN THAT OF TRUCKS.

Official Figures From Four States Show Increase of 50 to 170 Per Cent in Trailer Owners.

Use of trailers is growing much faster than the use of motor trucks, as shown by registration figures in the few states where there is separate registration of trucks, trailers and passenger automobiles.

In New York the number of trailers increased 125 per cent, or more than doubled, during the year ended January 31, 1919, while motor trucks increased 32 per cent. In the registration year ended January 31, 1918, there were 55,402 motor trucks and 985 trailers, and one year later there were 73,309 trucks and 2219 trailers.

In Pennsylvania trailer registrations increased 164 per cent and truck registrations 40 per cent in 1918, trailers 73 per cent and trucks 62 per cent in 1917, and trailers 50 per cent and trucks 62 per cent last year.

Trailers increased 82 per cent in New Jersey last year as compared with a 40 per cent increase in trucks the year before. A new state law that went into effect at the beginning of 1918 changed the basis of registration so that the increase in trucks last year cannot be calculated.

There was an increase of 170 per cent in trailers in one year in California, from 243 on June 30, 1918, to 414 on June 30, this year. During the same period the total number of passenger automobiles and motor trucks increased 30 per cent, from 335,443 to 403,802.

It is to be expected that trailer registrations will grow faster than truck or passenger car registrations, as trailers are a comparatively recent development in highway transportation and it may take from five to ten years for them to overcome the lead gained by motor vehicles. With 625,000 passenger automobiles and 600,000 motor trucks in service in the United States a large percentage of which could draw trailers with advantage and economy for their owners, it will not be surprising if the number of trailers is doubled or even tripled annually for the next five years at least.

HERE'S BEARINGS ADVICE

EXPERT TELLS HOW TO ADJUST TIMKEN IN WHEEL.

R. H. Cross of Bearings Service Company Explains Features of Tapered Roller Bearings.

How best to adjust a Timken roller bearing in a wheel is described by R. H. Cross, manager of the Portland branch of the Bearings Service Co. Regarding this adjustment and other features of the Timken bearings he says: "The best method to use in adjusting a Timken bearing in a wheel is to turn the bearing up tight and then revolve it a few times by hand, which insures all the working parts being in proper contact. Then back off the adjusting nut very slightly, from a quarter to a half turn, so that the wheel will spin freely without perceptible end play, which may be detected by shaking the wheel by grasping two spokes in a perpendicular line—one above and one below the hub. There should be no perceptible end play. Then, when you have it just right, lock the adjusting nut and the bearings will give the best possible service.

LUBRICATION TESTS MADE

STANDARD OIL EXPERTS STUDY CAR PROBLEMS.

Lubrication Charts Based on Experiments Show People Oil for Every Automobile.

It has long been recognized that machinery of every kind must be lubricated with oil of a particular consistency if it is to run smoothly. Every moving part must be protected by a thin film of oil of such consistency that it will maintain its body under the full stress of operation. Only this will prevent metal from touching metal with the consequent friction, wear and danger of breakage. Conditions vary in different kinds of engines, and that is why it is necessary to use different grades of oil to insure correct lubrication.

DOUBLE COMING OUT SOON

STEAMER PATENTS GO TO NEW ORGANIZATION.

Work to Be Started Immediately on Manufacture of Steam Cars With Custom-Built Body.

DETROIT, Aug. 30.—With the closing of the deal which brings together the Doble-Detroit Steam Motors company and its parent body, the General Engineering company, with the Amalgamated Machinery corporation, of Chicago, is brought out the fact that the last-named secures the sole manufacturing rights to all products involving the Doble patents, including the Doble-Detroit steam car. The basis of the agreement, in addition to large cash payments already made, is one of royalty payments and other contractual rights and responsibilities.

FEDERAL ROADS SYSTEM

NEW HIGHWAY MEASURE INTRODUCED IN CONGRESS.

States That Already Have Spent Big Sums on Roads Not Overlooked in Townsend Bill.

WASHINGTON, June 14.—States that have expended large sums in road construction and improvement are assured equitable compensation for their work under a study of the highway measure introduced in congress recently by Charles E. Townsend, United States senator from Michigan and incoming chairman of the committee on post-offices and post roads.

Clear Vision Saves Accidents!!

Don't wait until after the accident; do it NOW. Any Auto Dealer will fix you up with Class A Pritchard

WIND DEFLECTORS

NOTE TO DEALERS—We are prepared to supply you with one or 100 out of stock.

G. G. Gerber—the Radiator Man, 11th and Davis.

DOBBIN NOW ON THE RUN

CENSUS SHOWS 21,000 FEWER SINCE LAST YEAR.

In Face of Increase in Other Livestock, Horse Declines in Numbers and Value.

The year 1918 marked the turning point in the great battle between animal power and the motorcar in the United States. Figures indicate that the horse is on the run and the automobile has put him to flight.

Although horses ceased to be a factor of consequence for pleasure driving or transportation purposes several years ago, they continued to increase in number up to 1918. There were 1,750,000 more horses in the United States in 1917 than there were in 1905, but the tide turned last year, when the number of equines decreased by 21,000.

A large proportion of this decrease may be attributed to the use of horses in the war, but against this must be set the fact that during the same year hogs increased in number 5,800,000; sheep 1,000,000; cattle several hundred thousand. The drain on these animals for war purposes was undoubtedly much heavier than on horses.

It is also significant that horses showed a sharp decline in value per head in spite of the war demands and increased numbers. For the first time in a decade they were rated below \$100 a head, average value, making a decrease in value of horses for the one year of \$125,251, while all other classes of animals showed large increases.

STARTING LIGHTING IGNITION

450 Stark, Near 13th

We locate and correct your electrical troubles.

We are also sales and service station for

Diamond Kelly-Springfield TIRES

Ajax

R. W. Lee & Co. AUTO ELECTRICAL EXPERTS

450 Stark Street, Near Thirteenth

Phone Broadway 122.

Warped Valve Stems.

If there is a lack of compression, and on examination the valve heads seem clean and perfect, give the valve stems a careful looking over to see if they have not become warped by the intense heat of that part of the engine.

PARK CHIEF WILL TRAVEL

MANAGER OF YOSEMITE TO SEE OTHER PARKS.

Foster Curry Sets Out on Tour to Get Ideas for Improvements at Famous Camp Curry.

CAMP CURRY, Sept. 6.—Foster Curry, manager of Camp Curry, left the Yosemite valley last week in his new Cadillac victoria coupe on the first leg of a tour of the national parks of the United States.

"The public is just beginning to appreciate the rare beauties that have been preserved for them in our national parks," says Curry. "They are beginning to realize that when Uncle Sam believes in a place sufficiently to put his stamp of approval on it by making it a national park there must indeed be wonderful scenery included in the area."

"This year nearly twice as many people visited Yosemite as heretofore, and all of the national parks are entering upon an era of unprecedented popularity and prosperity."

"Anticipating the need of further tourist accommodations in Yosemite, I am making this trip," says Curry, "to see what improvements have been made in our other national parks with a view toward getting new ideas for further improvement and extension of Camp Curry."

Curry will conclude his tour in Washington, D. C., where he expects to take

national system it would develop that some of the states had already completed in a measure the highways which would form part of that system and that they should not be penalized for having been farsighted and progressive.

"This objection seemed sound to me and I believe that I have met it through the incorporation which says that where states have already constructed all or parts of roads so located as logically to form a part of the national system and to a standard deemed by the federal government to be adequate, that an equivalent mileage of other highways shall be constructed by the government or by the state under governmental authority."

"These additional highways would not form part of the national system and would not be controlled by or maintained by the federal government, but it would be expected that they would connect or co-ordinate with the national system."

"The same is true except as to amount in the state of Massachusetts, Connecticut, Rhode Island, Maryland and California, and is now being worked out in New Jersey, Pennsylvania, Ohio, Illinois, Wisconsin and Michigan and probably other states which do not occur to me at the moment."

Hydrometer Holder.

The hydrometer, which every careful car owner uses constantly on his battery, is easily broken and it is somewhat of a problem to know where to keep it. The best way is to keep it right in the wooden case in which it comes and to attach metal straps to the wall, into which the case and instrument may be thrust after the car owner has finished his battery test.

Floor Scraper.

It is possible to make a very useful floor scraper from an old license plate, by attaching the same to the end of a broom handle and placing a cross board to brace the plate. Iron braces from the handle to the cross piece, prevent the head of the scraper from bending. This tool is very convenient for cleaning oil and other messy matter from the garage floor.

Holds Service Record.

Four full years of service from two United States nobly tread tires is a good record. Benjamin F. Rich of North Chatham, Mass., reports that four years ago he put these two tires on a Ford truck. He has used them every business day winter and summer. One of them gave out a few days ago after giving 38,000 miles, but the other is still going.

Clear Vision Saves Accidents!!

Don't wait until after the accident; do it NOW. Any Auto Dealer will fix you up with Class A Pritchard

WIND DEFLECTORS

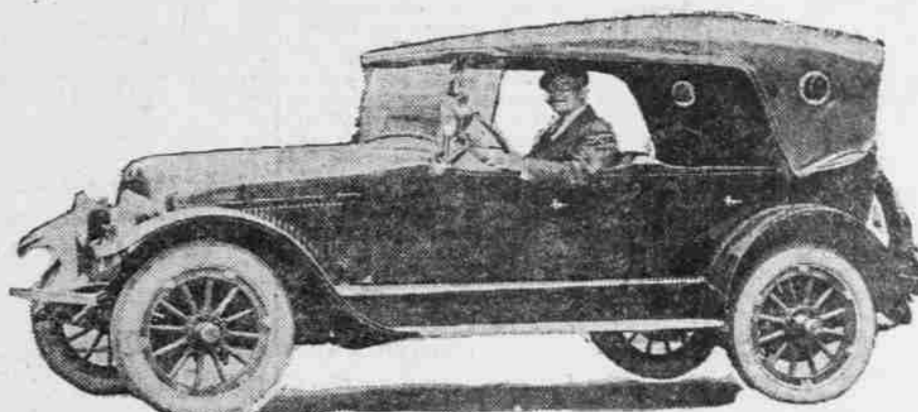
NOTE TO DEALERS—We are prepared to supply you with one or 100 out of stock.

G. G. Gerber—the Radiator Man, 11th and Davis.

Perry Abbott of the Motorcycle & Supply Co.

says:

"Its Performance Beats Them All"



STEPHENS Salient Six



THE RICH, deep mirror-luster and non-fading color finish of the Stephens Salient Six retains its initial beauty and splendor through seasons of use.

THE MECHANICAL PERFECTION of the Stephens Salient Six commands admiration. It burns the lowest grade of fuel without lessened performance.

THE LOGICAL CAR for the fastidious is Stephens Salient Six.

HAMILTON-LEATHERMAN MOTOR CO.

Distributors Temporary Location 330 Burnside Street

STARTING LIGHTING IGNITION

450 Stark, Near 13th

We locate and correct your electrical troubles.

We are also sales and service station for

Diamond Kelly-Springfield TIRES

Ajax

R. W. Lee & Co. AUTO ELECTRICAL EXPERTS

450 Stark Street, Near Thirteenth

Phone Broadway 122.

Warped Valve Stems.

If there is a lack of compression, and on examination the valve heads seem clean and perfect, give the valve stems a careful looking over to see if they have not become warped by the intense heat of that part of the engine.

PARK CHIEF WILL TRAVEL

MANAGER OF YOSEMITE TO SEE OTHER PARKS.

Foster Curry Sets Out on Tour to Get Ideas for Improvements at Famous Camp Curry.

CAMP CURRY, Sept. 6.—Foster Curry, manager of Camp Curry, left the Yosemite valley last week in his new Cadillac victoria coupe on the first leg of a tour of the national parks of the United States.

"The public is just beginning to appreciate the rare beauties that have been preserved for them in our national parks," says Curry. "They are beginning to realize that when Uncle Sam believes in a place sufficiently to put his stamp of approval on it by making it a national park there must indeed be wonderful scenery included in the area."

"This year nearly twice as many people visited Yosemite as heretofore, and all of the national parks are entering upon an era of unprecedented popularity and prosperity."

"Anticipating the need of further tourist accommodations in Yosemite, I am making this trip," says Curry, "to see what improvements have been made in our other national parks with a view toward getting new ideas for further improvement and extension of Camp Curry."

Curry will conclude his tour in Washington, D. C., where he expects to take

Hydrometer Holder.

The hydrometer, which every careful car owner uses constantly on his battery, is easily broken and it is somewhat of a problem to know where to keep it. The best way is to keep it right in the wooden case in which it comes and to attach metal straps to the wall, into which the case and instrument may be thrust after the car owner has finished his battery test.

Floor Scraper.

It is possible to make a very useful floor scraper from an old license plate, by attaching the same to the end of a broom handle and placing a cross board to brace the plate. Iron braces from the handle to the cross piece, prevent the head of the scraper from bending. This tool is very convenient for cleaning oil and other messy matter from the garage floor.

Holds Service Record.

Four full years of service from two United States nobly tread tires is a good record. Benjamin F. Rich of North Chatham, Mass., reports that four years ago he put these two tires on a Ford truck. He has used them every business day winter and summer. One of them gave out a few days ago after giving 38,000 miles, but the other is still going.

Clear Vision Saves Accidents!!

Don't wait until after the accident; do it NOW. Any Auto Dealer will fix you up with Class A Pritchard

WIND DEFLECTORS

NOTE TO DEALERS—We are prepared to supply you with one or 100 out of stock.

G. G. Gerber—the Radiator Man, 11th and Davis.

Leavens and Howard

331 Couch near Broadway

Phone Broadway 3334

GOODRICH DISTRIBUTORS

Silvertown Cords, Safety Treads De Luxe Solid Truck Tires

GOODRICH TIRES

CLEANING THAT PAYS

Phone Broadway 3334

331 Couch near Broadway

Phone Broadway 3334

331 Couch near Broadway

Phone Broadway 3334

331 Couch near Broadway

Phone Broadway 3334

331 Couch near Broadway

Phone Broadway 3334

331 Couch near Broadway

Phone Broadway 3334

331 Couch near Broadway

Phone Broadway 3334

331 Couch near Broadway

Phone Broadway 3334

331 Couch near Broadway

Phone Broadway 3334

331 Couch near Broadway

Phone Broadway 3334

331 Couch near Broadway

Phone Broadway 3334

331 Couch near Broadway

Phone Broadway 3334

331 Couch near Broadway

Phone Broadway 3334

331 Couch near Broadway

Phone Broadway 3334

331 Couch near Broadway

Phone Broadway 3334

331 Couch near Broadway

Phone Broadway 3334

331 Couch near Broadway

Phone Broadway 3334

331 Couch near Broadway

Phone Broadway 3334

331 Couch near Broadway

Phone Broadway 3334

331 Couch near Broadway

Phone Broadway 3334

331 Couch near Broadway