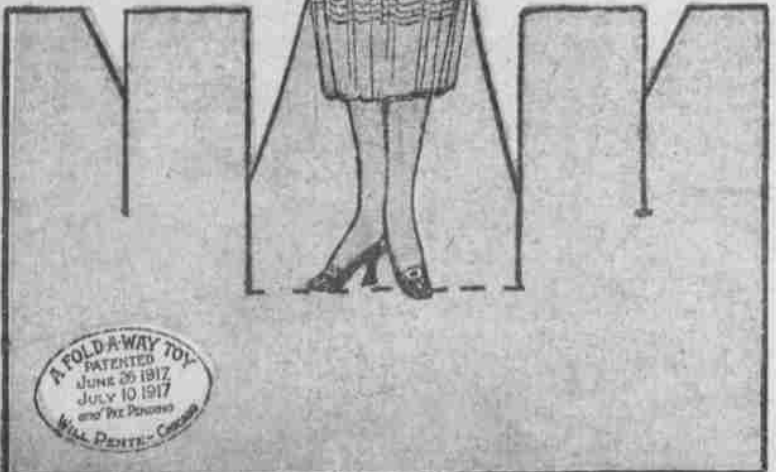
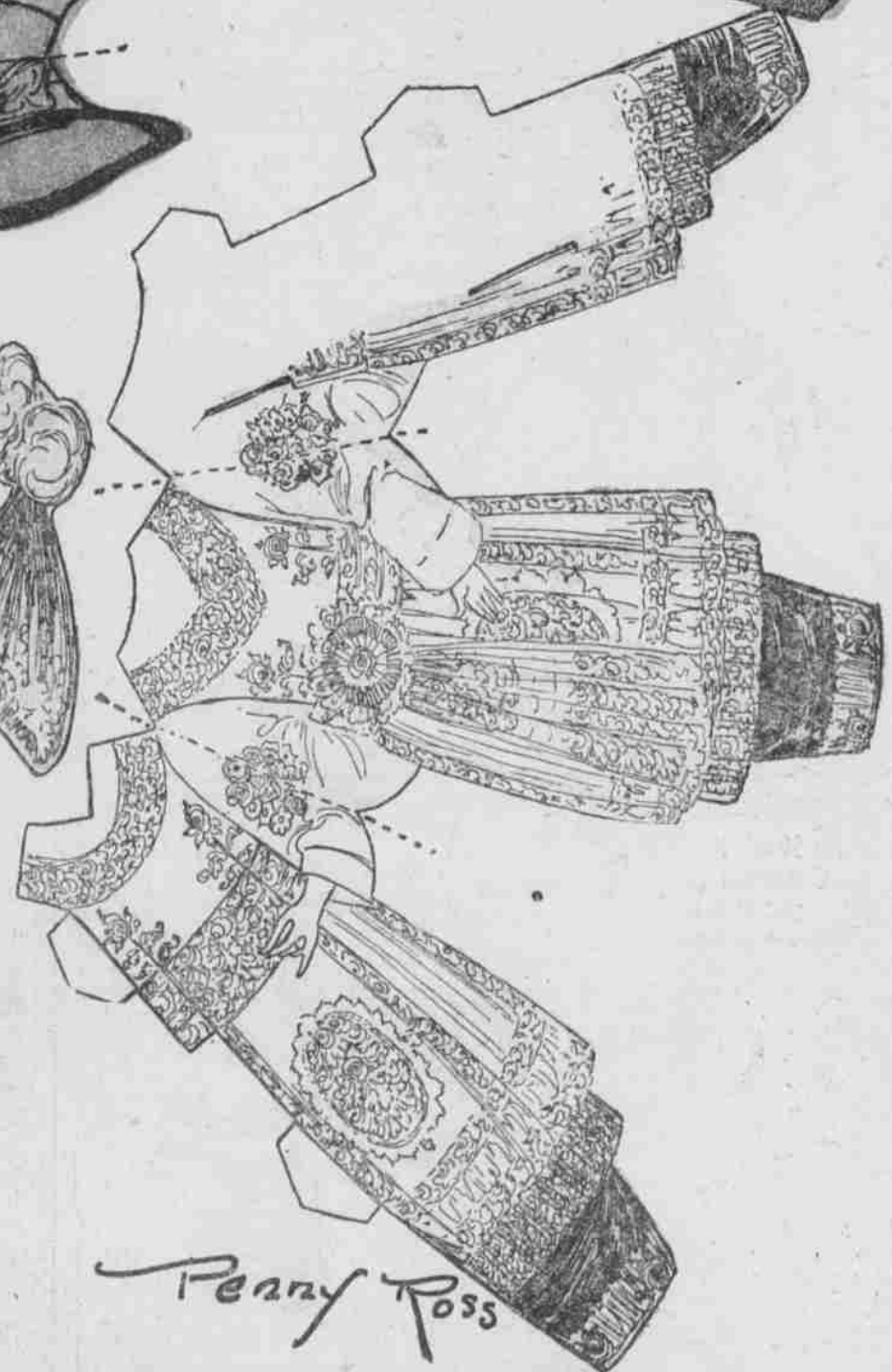
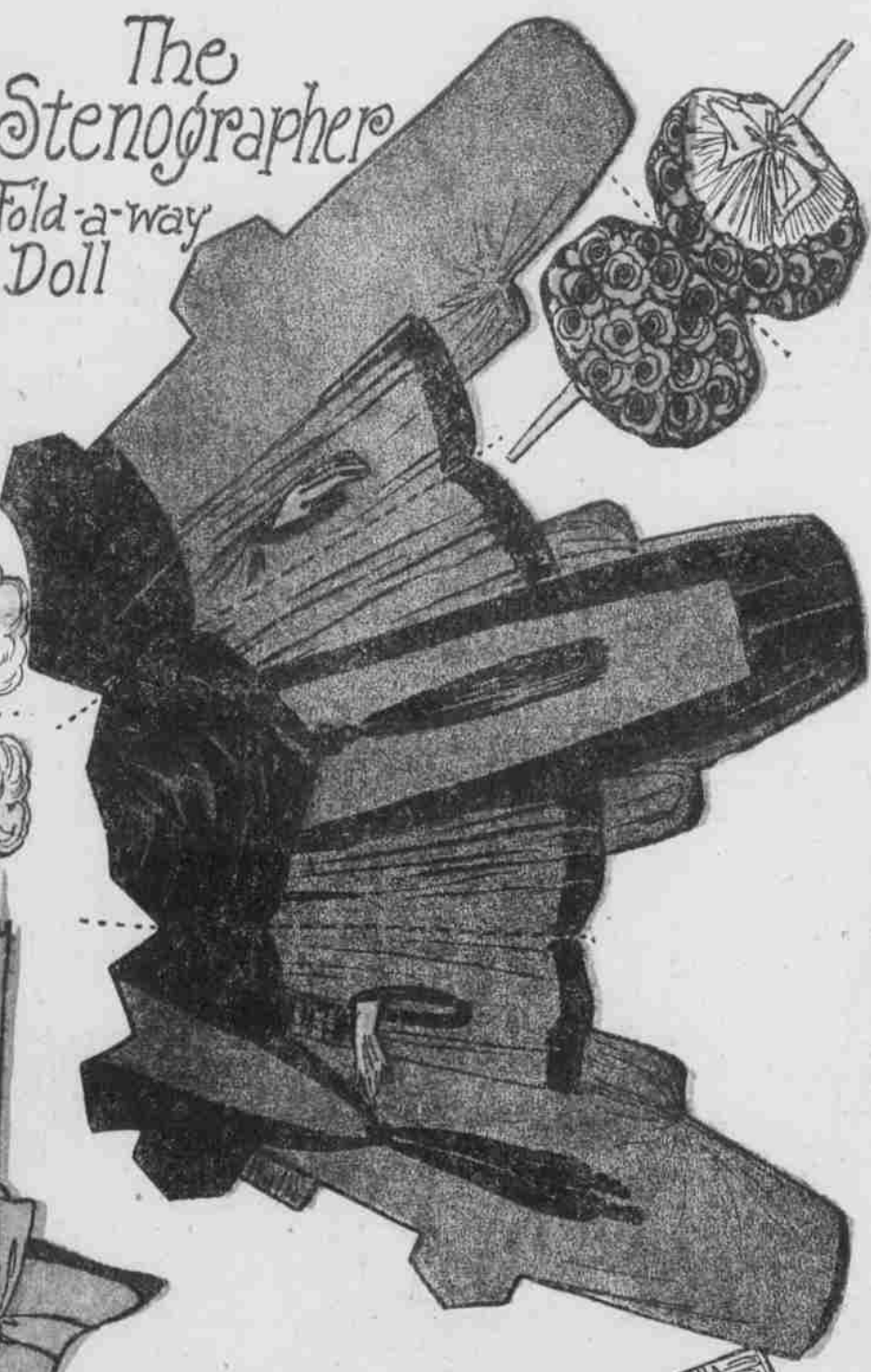
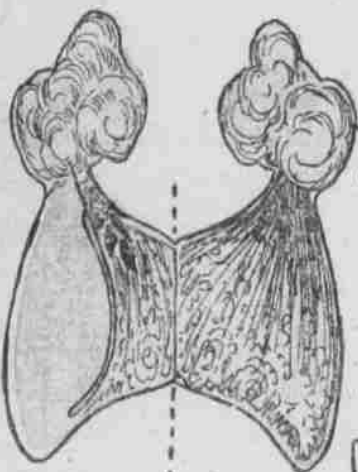
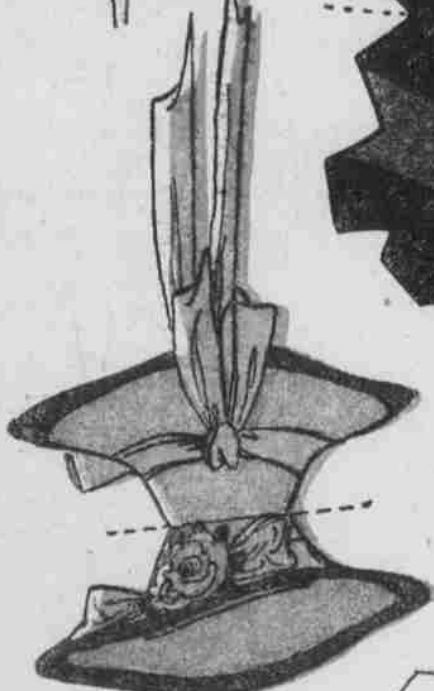
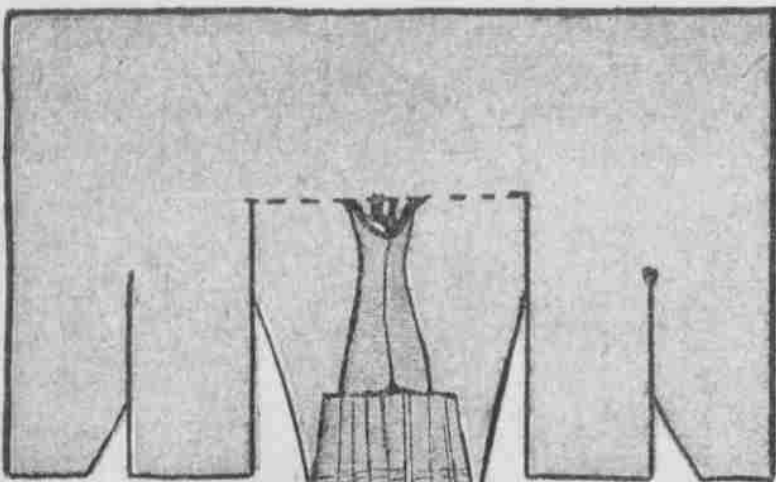


# The Stenographer

Fold-a-way Doll



## Directions for Cutting Out the Stenographer Doll

Mount the doll on heavy paper—an old magazine cover will do nicely—when dry trim off the black lines around the doll; cut into the double lines on the bases to make locks, and into the double lines on body to make slits into which the fastening tabs of the dresses fit. Fold over directly on the dotted lines at the top of the head and the dotted lines at the feet in opposite directions. Bring the bases together and slide the locks from one side into the locks on the opposite side. The doll will then stand alone.

It will not be necessary to mount the dresses, etc., but cut into the slits of the dresses; fold directly on the dotted lines and fit the fastening tabs into the slits. Dolly's clothes are put on and taken off like real dresses; they fit on tightly and will not drop off; and just think! you will have backs to all the dresses as well as fronts, and Dolly herself will stand up straight without any unsightly case! Next week Trained Nurse Doll with complete wardrobe will appear on this page.

A FOLD-AWAY TOY  
 PATENTED  
 JUNE 29 1917  
 JULY 10 1917  
 and P. H. PATENTED  
 W. H. PATENTED

Penny Ross