

NEW HIGHWAY LINK MOST SCENIC OF ALL

Work Fast Progressing Along
Hood River-Mosier Section.

GORGE VIEW WONDERFUL

New Part of Columbia River Highway Cuts Through Cliffs High Above the Great River.

BY JOE D. THOMSON.
HOOD RIVER, Or., Aug. 2.—(Special.)—For scenic grandeur and the appealing views afforded from lookout points over the Columbia, the Hood

been applied, holding the tread firmly in place. "As to the guarantee given with Thermoid tires, we believe it is the best offered, being 6000 miles on all sizes, on which a guarantee of 7500 miles is given. The tire is constructed to stand all hard knocks and is especially resistant to stone bruises, which have been the ruin of many tires."

AIRPLANES ARE SELLING FAST

Chicago Auto Dealer Takes on Line and Sells 40 in Week.

CHICAGO, Aug. 2.—At the end of the first week of selling airplanes an automobile dealer who has added planes to his stock announced that he had sold 40 machines and declared himself satisfied there was a field for the commercial planes. The dealer, a veteran on an automobile row, added airplanes to his sales floor exhibits by purchasing 150 Canadian army training planes and made Chicago the first commercial airplane selling center in the country.

INDIANA FAVORS MUFFLERS

Driver Who Uses Cut-Out Likely to Be Stuck for \$100.

There has recently been passed by the Indiana senate the anti-muffler bill,

BETTER TIMES ARE AHEAD

DEMAND FOR TIRES INDICATION OF PROSPERITY.

Head of Star Rubber Company Sees Good Sign in Heavy Call for Quality Tires.

With peace with us again, it is fair to assume that the so-called reconstruction period has been successfully passed or at least the first phase of it. The second phase seems to promise an even more widely distributed volume of business.

Many business men have felt that the reconstruction period was purely a "mental" condition, and nowhere is this more surely thought than in the automobile tire business.

A year ago production had been severely cut and the reduced production could not take care of the demand. Today production is at top capacity, but the demand for good tires outstrips the supply. Much of the "reconstructive" prosperity belongs to the sudden impetus, or rather unrestrained impetus, of the automobile and allied industries. The leading tire men think there is much greater prosperity ahead. Crops



The Scissors Test

Reproduces actual service conditions. You hold the rubber at tension exactly as the air will hold it. The scissors snip is like the edge of a puncture.

This test proves the truth of the Norwalk guarantee: Norwalk Tubes do not rip as other tubes. Cuts can always be repaired. They do not spread.

It proves before you buy, the mileage you can get from Norwalks.

Norwalk Tubes, red and gray, are made of highest grade floating stock*.

And there's a Norwalk Casing too.

If your dealer cannot supply you write to.

Auto Parts Supply Co. Portland, Or.
Auto Parts Supply Co., 812 E. Pike St., Seattle, Wash.
Distributors

NORWALK TIRE & RUBBER COMPANY

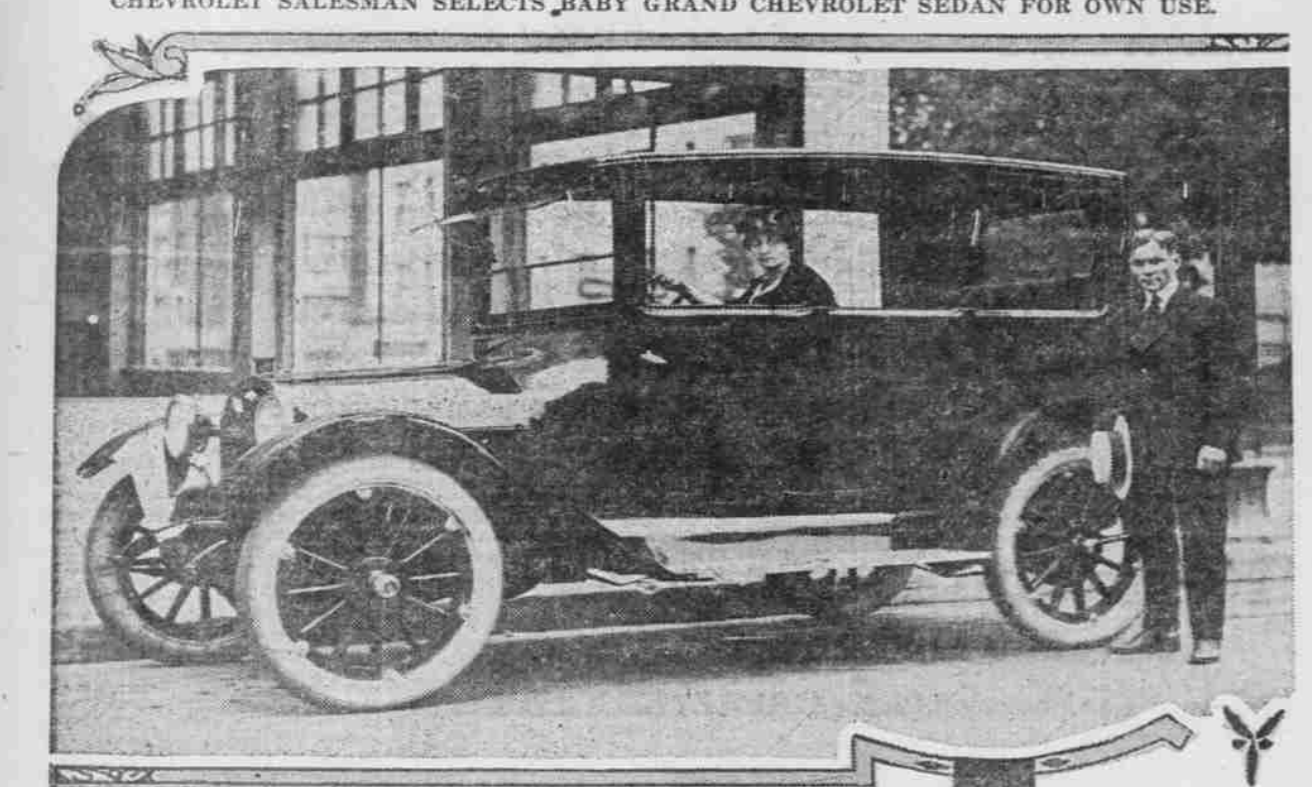
Makers of Casings, Cord and Fabric; and of Tubes, Red and Gray.
Norwalk, Connecticut

*Floating stock means rubber so pure that it floats. It is the standard. It means what 24K gold means. To you it means mileage. File away a dated sample of Norwalk Tube and others and compare them at the end of a year.

You are going to learn a lot more about Norwalk quality. But don't wait. Start saving your mileage-money now. Get the stuff that's in the tube. Ask us for a sample of Norwalk rubber.



NORWALK TUBES and CASINGS



Phil R. Dana, salesman for the Fields Motor Car company, likes an enclosed car. So does Mrs. Dana. Here is the new baby grand Chevrolet sedan they bought for themselves the other day.

River-Mosier Link of the Columbia

River highway will be the equal of any stretch of the great scenic road between here and Portland. Emerging from a pleasant dell about a mile and a half east of Hood River, the new highway route to Mosier, now under construction, passes along the precipitous side of the Columbia's rugged canyon at about mid-height. The view of the lowland farms of "Engen on the Columbia," on the Klickitat county, Washington, side of the river, might almost be that from an aeroplane. As the traveler progresses east, the topography of the country changes, and the bare, brown hills back of Lyle and around Granddallies gives the motorist his first intimation of the arid regions of Eastern Oregon and Washington.

The contractors have completed the new six-mile grade, except for about a mile on either side of the Hood River-Wasco county line. Here the construction work is as difficult as any met with in Multnomah county. Indeed the entire six-mile stretch is the heaviest for its length ever undertaken by the state highway commission.

At the east end of the two-mile link, which will be cut through almost solid rock in the side of the cliff, are twin tunnels. The smaller of the tunnels, a bore of 65 feet, is completed, and hard-rock men are now well on the way into the second, which will be 245 feet long with two open windows, affording an inspiring glimpse of the Columbia.

The new grade of the highway six months ago was almost impassable to a goat. Today it is walked over by scores of Hood River people attracted by construction work and the views from the new grade.

prohibiting the driver or owner of a

gasoline-propelled vehicle from using it without a muffler and forbidding the use of a cutout, providing for a fine of from \$10 to \$100. As a result of the activities of justices of the peace, a bill was introduced by Senator McCray, in Indianapolis, with a view to protecting motorists, to the extent of limiting the jurisdiction of justices, providing for a preliminary hearing of cases pertaining to the motor vehicle laws and giving them the authority only of binding the accused over to the circuit court for trial.

NASH MAN GETS PROMOTION

Walter W. Smith Advances to Assistant Sales Manager.

Walter W. Smith has been promoted to assistant sales manager of the Nash Motors company. This has been announced by Charles B. Voorhis, general sales manager, Motors company to distributors of the organization.

Mr. Smith got his early training in the automobile business with the old Speedwell Motor Car company of Dayton. Later he became identified with the sales organization of the Thomas B. Jeffery company before that company was taken over by the Nash Motors company.

Last January Mr. Smith was promoted to manager of passenger car sales. His work won for him the high esteem of Mr. Voorhis and resulted in his present promotion.

are big, prices are high, and, although

living is high, wages are also higher than ever before in peace times. Men and women have money to buy merchandise hitherto out of their reach.

President Firey, of the Star Rubber company, commenting on the situation, said: "Our faith in the future is shown more by our action than our opinions. We are building and extending as fast as we can, but still the demand for tires keeps ahead of us. It seems like a stern never-ending chase to catch up with actual sales."

IF YOUR AUTO GETS ON FIRE

Keep Engine Turning Over by Means of Electric Starter.

Q. In case of a fire under the hood, ought the gas to be turned off and the hood then be removed? How else can the fire be checked?

A. The gasoline should be turned off and then the fire extinguisher should be turned on the base. Try to keep the engine turning over by means of the starter. This will tend to draw the flames into the manifold and cylinders.

Don't start your car with a jerk. Always engage the clutch gradually, and see that the car starts off easily.

THERMOID GIVES WEAR

SPECIFICATIONS SHOW ITS SUPERIORITY TO OTHERS.

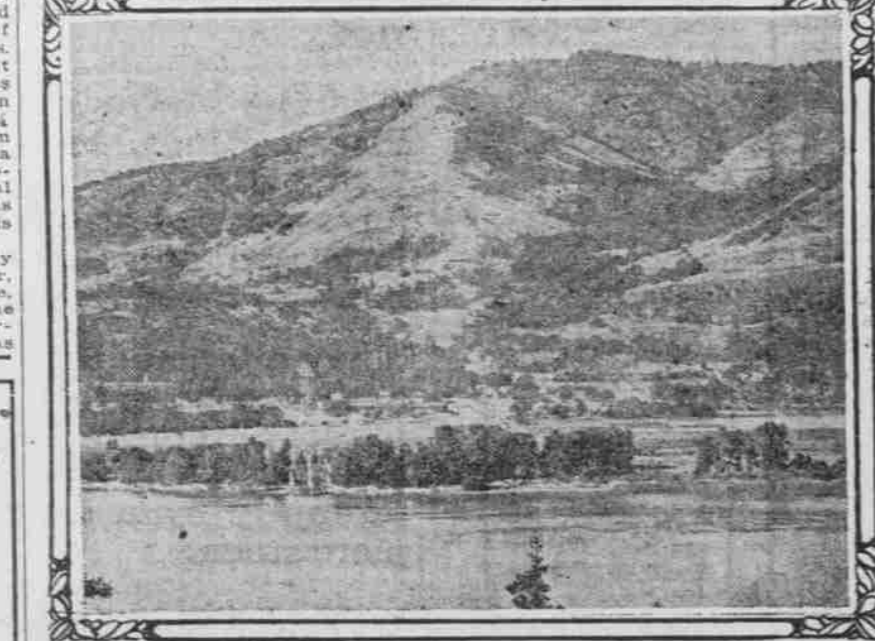
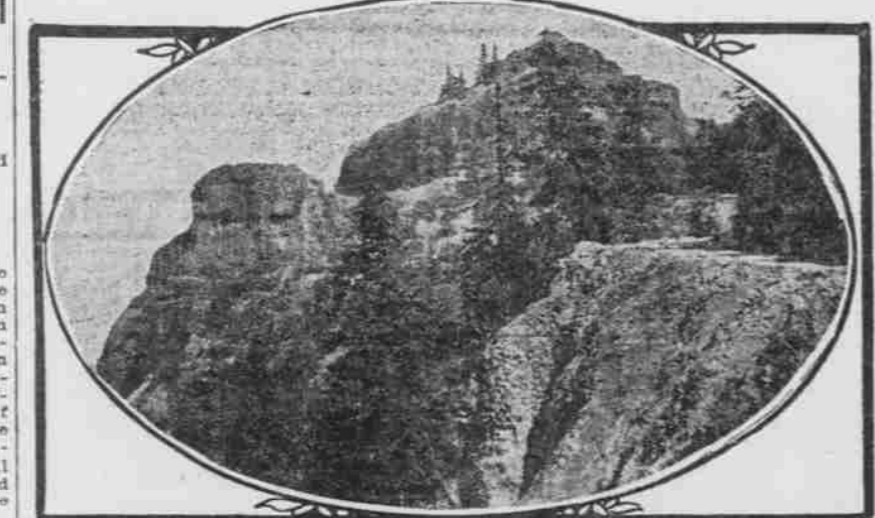
Tire Built by Makers of Thermoid Brake Lining Guaranteed to Make Good.

The best and longest wearing tire for the least amount of money to be spent in the long run was the slogan of the Thermoid Rubber company when it set out to build a tire for the motorists of the world," said Robert E. Allen of the Allen & Hebard company, distributor for Thermoid cricoid compound tires. "After several months of experimenting, the chemists and tire experts at the Thermoid factory discovered a compound which they call cricoid. This discovery is compounded with rubber and adds greatly to the life of the tire."

A few Thermoid specifications will show the superiority of the Thermoid tire. In many sizes one more ply of fabric is put than in standard tires. For example: 3 1/2-inch tires are built with five plies of fabric and 4 1/2 sizes with seven plies. The fabric used in Thermoid tires is woven from 1 1/4 ounce long staple Sea Island cotton and between each layer of fabric is a special blend of cricoid compound rubber. The cushion is made of a special blend of cricoid compound rubber as well as the breaker strip, which is made of specially woven fabric.

The tread, which must be especially strong, is of cricoid compound rubber, extra thick, and because of cricoid, tough and resistant. To add to the strength of the tread a special Thermoid interlocking arrangement has

ON THE NEW HOOD RIVER-MOSIER LINK OF THE COLUMBIA RIVER HIGHWAY.



Above—High above the Columbia the new grade cuts its way along the cliffs near the Hood River-Wasco county line. Below—View from the new highway, of Engen, Wash.—"Engen on the Columbia."

TEMPLAR
The Superfine Small Car
SEE IT
at
90 North Broadway
Wray Motor Car Co.

BEARING RUSHED BY PLANE

BEARINGS SERVICE COMPANY MAKES QUICK DELIVERY.

Airship Used to Hasten Bearings to Tommy Milton in Time for Uniontown Race.

How Tommy Milton, winner of the independence derby at the Uniontown races on July 19, was kept in the race by quick delivery of a front wheel bearing by airplane from Detroit, is graphically described by A. K. Hebert, general manager of the Bearings Service company of Detroit. The plane left Detroit at 6:30 A. M. on the morning of the race, and the bearing was delivered to Milton at 12:15 the same day, two hours before the race.

The flight was the result of a last minute request by Milton's mechanician to keep Milton in the race. The Pittsburgh branch of the Bearings Service company. When it was discovered that the branch had completely exhausted its supply of this type of bearings, a request was immediately forwarded to the home office in Detroit to find means of supplying Milton with the needed bearing. The wire arrived late Friday night, too late for the bearing to reach Uniontown by mail in time to keep Milton in the race.

The emergency was met by J. T. Patterson, general manager of the Universal Aviation company, who supplied the company with a plane and pilot, to take the bearing to Uniontown. The plane left Morrow field, Detroit, carrying H. J. Dettlerich, representing the Bearings Service company, at 6:30 A. M. of the day of the races.

Landings were made at Norwalk and New Philadelphia, O. Near Wheeling the plane developed engine trouble, and a hazardous forced landing was made on a hill top about 50 miles from Uniontown. The bearing was then hurried to Milton in Uniontown in an automobile borrowed from a nearby farmer.

The change of bearings was effected in time for Milton to enter the race, and two hours later he smashed all previous Uniontown track records when he drove his car around the course at a rate of 186 miles an hour.

Don't get arrested for violating rules—if you do, don't blame the police officer.

Did You Ever Have a Blowout?

IF SO—THIS AD WILL APPEAL TO YOU

Would you like to know that when you contemplate a trip you can make your tires the least of your worries instead of one of the big worries?

Would you like to feel that you can travel with safety without rim-cuts or blowouts?

Would you like to cut your tire bills 1/2 to 3/4?

Equip your casings with Maxotires

Maxotire Sales & Supply Co. Bdy. 684, 522 1/2 Washington

BUICK EXPERTS
BUICK REPAIRS EXCLUSIVELY
32,000 sq. ft. floor space. Live or dead storage. Cheap rates.
PARTS SUPPLIES
PORTLAND BUICK REPAIR CO.
N. W. Cor. Sixteenth and Jefferson St.
Portland, Or. Main 3419

DORT

Quality Goes Clear Through



You have observed that we frequently emphasize the accessibility and simplicity of Dort design.

We have good reason to believe that no car on the market is of more simple and accessible construction. Perhaps the best way to make clear the value of Dort accessibility is to say it this way:

When you desire to "tune up," or "dope up," or adjust this or that part you can do it yourself easily and at little cost.

And of course there's no need to point out that Dort simplicity means maximum freedom from mechanical trouble.

Prices F. O. B. Factory
Wire Wheels and Spare Tires Extra

Northwest Auto Co.

"The Line Complete."
Alder at Eighteenth
DORT MOTOR CAR COMPANY
Flint, Mich.

Reliability In Motor Trucks

You pick your employes for their ability and reliability. Why not select your motor truck the same way? You know what you want your truck to do. You know your own business better than anyone else can do it. If you will study the Atterbury Motor Truck design and construction you will see why other Portland owners are so completely satisfied with their Atterburys. Compare the Specifications

ATTERBURY TRUCK SALES CO.
Truck Specialists
343 Oak, Near Broadway Phone Bdw. 354

ATTERBURY

MOTOR TRUCKS OF MAXIMUM SERVICE

Carlisle Tires
Good looking
herd's
Exclusive
Howell-Swift Tire Co. and Pacific Tire & Rubber Co.
445-47 Stark Street, Between Twelfth and Thirteenth.
Phone Broadway 280.