

ROAD URGED ALONG CASCADE SUMMITS

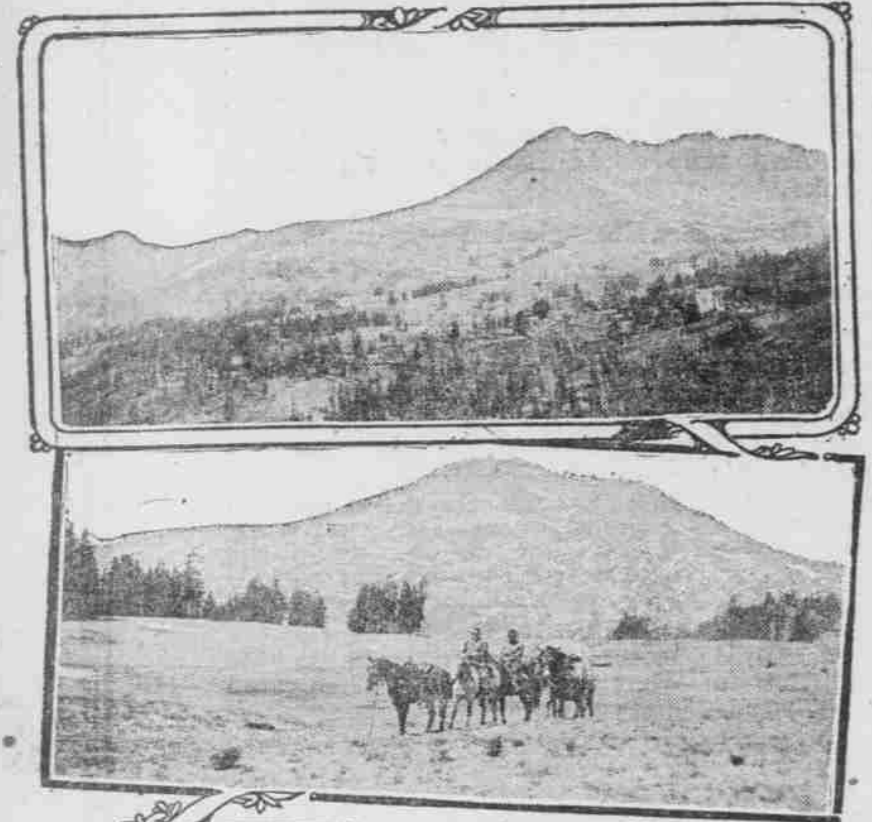
John A. Keating Enthusiastic Over Great Project.

WONDERFUL COUNTRY SEEN

Financier Proposes Road to Follow Range From Crater Lake North to Mackenzie Pass.

The intent possibilities of Oregon's scenic mountain ranges, from the commercial viewpoint of tourist travel, will never be fully utilized until a summit road is built along the skyline of the

ALONG ROUTE OF PROPOSED CASCADE MOUNTAINS SUMMIT ROAD FROM CRATER LAKE TO MACKENZIE PASS.



Above—The South Sister, viewed from the plains below. Below—View of Broken Top from rim of nearby mountain. The photos were taken on a trip into this country by John A. Keating and R. C. Hart of Portland.

Cascade mountains from Crater lake to the Mackenzie pass. Such is the opinion of John A. Keating, president of the Lumbermen's Trust company, who, with R. C. Hart, also of Portland, recently explored the innermost recesses of the Three Sisters country, in company with H. G. Hayes, a skilled mountain guide, who lives at Mackenzie bridge.

Two pack mules and three saddle horses were employed in making the trip out of Foley Springs into the summit country south of the Three Sisters, there being no trail except for the first nine miles of the mountain journey. The members of the party slept out in the open and saw only one other party after they left the frequented roads and paths of the Mackenzie district.

Prominent among the scenic gems which Mr. Keating and his trip companions visited on their several day expedition were Broken Top, which rivals Crater lake in beauty; the Wife, an interesting mountain peak, which the party ascended; Elk lake and Devil's lake. They passed many mountain streams and exquisitely colored pools and lakes.

In some of the smaller lakes, mirrored reflections of snow-capped mountains, including one of the major peaks, the south Sister, could be seen when the atmosphere was still. Mountain flowers of every conceivable tint grew in such profusion as to resemble parks and gardens.

Ridge Upon Ridge in View.
Elk lake, which nestles among the hills on the eastern side of the divide, stands at an elevation of 5900 feet, with delightful camping places along its shore. Framing the horizon are the craggy Broken Top, the wreck of a terrific volcanic disturbance; the south Sister, Bachelor mountain and a number of other peaks.

Until he explored this country from the pinnacle of the Wife, Mr. Keating says he had never fully appreciated the broad area of Oregon's mountain country. Occupying the 50-mile space between the skyline of the Wife, 7200 feet above sea level, and the smooth plains of the Willamette valley, range after range of blue mountains point their steeples toward the sky, as if each hoped to command its neighbors.

The witness of this spectacle can well be forgiven for imagining that he is looking out upon a new world.

The summit country proper forms a belt about 20 miles wide. There is a scarcity of good timber, the trees for the most part being of poor quality, as trees grow in Oregon. There is little soil, only patches here and there being suitable for sheep pasturage.

But the attractions for tourist and vacationist challenge enumeration, and as to the air, Mr. Keating says it is the finest he has ever breathed in Oregon or anywhere else.

"In studying the Three Sisters country, it is well to bear in mind that this section is believed to have been visited by the most recent volcanic disturbance of any importance to have befallen the United States," remarked Mr. Keating last week. "The present evidences of volcanic action in the summit district are most interesting. The ground in many places is covered with pumice stone and there are lava flows such as the late one along the shoulder of the south Sister. This particular area is the nearest approach to absolute desolation I have ever seen."

Broken Top is Wrecked Peak.
"Devil's lake, a beautiful water of exquisite color, lies tucked away in the lower mountains. At one end of the meadow is an interesting little creek. The outlet at the other end was blocked by a flow of absolutely naked black lava. As this lava cooled it cracked, giving the stream a chance to pour underneath between the cracks and assert itself as a stream again below."

"Broken Top was evidently a mountain of huge proportions before the eruption blasted it into wreckage. Its south side was torn out completely while the other side still stands, a veritable mass of jagged fragments, which really amount to peaks by themselves."

be necessary to carve a summit road from Crater lake to Mackenzie pass and connect the mountain districts with good lateral roads leading to the population centers.

IN A PRODUCTION QUANDARY

Belgian Automobile Makers Face Many Difficulties.

Automobile manufacturers of Belgium, who recovered their factories shortly after the signing of the armistice, are at a loss to predict when they will be able to resume production. The plants were in a deplorable condition and most of the manufacturers have been so busy cleaning up and restoring their plants that they have been unable to give the proper attention to future work.

Another drawback is that most factories have an abundance of requisition bonds and no money, and it is difficult in the present market to buy without ready cash. An exception is the Minerva Motors Societe Anonyme. S. De Jong, director of the Minerva works, has definite plans for production and

says that he expects his company to be the first in the market. Mr. De Jong began his preparations for production while in exile in Holland.

RICH MAN GETS BIG TRUCK

FOUR-WHEEL DRIVE WINTHER JUST RIGHT FOR HOWELL.

Wasco Wheat Man, 6 Feet 7 Inches Tall, Finds Winther "Good Enough for Him."

Henry Howell bears the distinction of being not only one of the largest wheat operators in the Pacific northwest in point of acreage, but also of being absolutely the largest wheat operator in the Pacific northwest physically. In his stocking feet, he towers into the air some six feet 7 inches. Even Jess Willard and Jack Dempsey would feel a bit unnecessary in Mr. Howell's presence.

Mr. George N. Crossfield, Wasco dealer handling Winther trucks, writing to the Oregon Motor Car company relative to sale of a 2 1/2-ton 4-wheel drive Winther to Mr. Howell, said that Mr. Howell had tried out seven different makes of trucks on the Sherman county hills, and after satisfying himself relative to the merits of the different trucks, remarked that "Winther was good enough for him." The work the truck has since been doing over these same hills in Sherman county justifies his choice.

The congressional report of 1914 placed the economic loss to the United States through poor roads at an annual figure of \$204,000,000 for transportation costs alone. The heavy increase in tonnage since that time probably makes the loss today close to \$1,000,000,000 a year.

Commerces TRUCKS

MEASURED by any standard—performance, war record, commercial reputation, specifications, quality, economy of operation, upkeep, equipment, price—sound judgment will concede supremacy to the Commerce Truck in its class

- 1 Ton—\$1500
- 1/2 Ton Overload Capacity Solid Tires
- 1 1/4 Ton—\$1895
- 3/4 Ton Overload Capacity 36 x 6 Pneumatic Cord Tires
- F. O. B. Detroit

McCRAKEN MOTOR COMPANY
490 Burnside St., Portland.
Distributors of Commerces Trucks and Commerces Service.
Phone Broadway 93.
Commerces Motor Car Co., Detroit

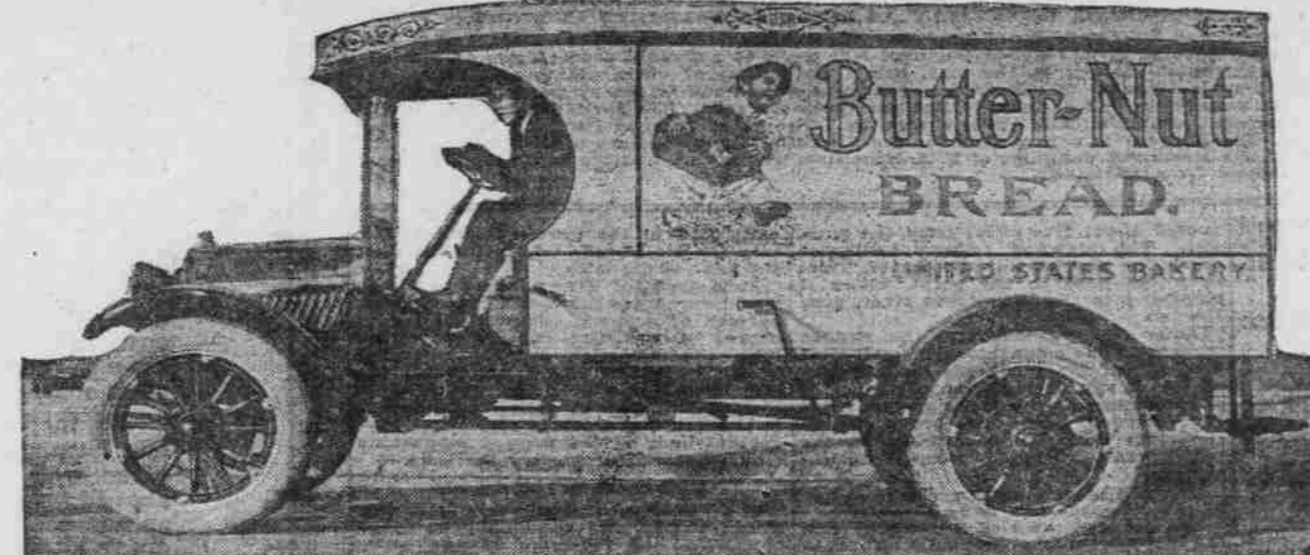
22 Years' Experience Back of It

Oldsmobile

ECONOMY

Truck

NEARLY 100 OLDSMOBILE TRUCKS NOW BEING OPERATED IN OREGON



Body Dimensions 3 Feet 9 Inches by 8 Feet 4 Inches
Delivered to U. S. BAKERY (Always Butter Nut)



Body Dimensions 5 Feet by 9 Feet
Delivered to LIPMAN-WOLFE CO. (Merchandise of Merit)



Body Dimensions 3 Feet 10 Inches by 8 Feet 2 Inches
Delivered to McDUGALL-OVERMIRE CO. (Structural Engineers)



Body Dimensions 3 Feet 9 INCHES by 9 Feet 3 Inches
Delivered to MARK-LEVY & CO. PRODUCE (Fresh From the Garden)

Four Distinctive Firms Using Oldsmobile Trucks

- Oldsmobile Torbensen Internal Gear Drive
- Timken Bearings
- Goodyear Cord Tires, 35x5
- Electric Lights
- Electric Starter
- Governor on Motor

We will be glad to make an appointment; then you can see for yourself why the best buyers in the country are selecting

Oldsmobile Economy Trucks

We can now make immediate delivery on the Oldsmobile Economy Trucks which will suit your business or farm.

It will pay dealers who are interested in handling a high-grade truck to take on the Oldsmobile line, which has given perfect satisfaction to users. Satisfied owners make easy sales.

Illustrated Catalog on Request

Express Body - - \$1600
Cab and Sills - - 1545
Chassis - - - - 1500

All Prices F. O. B. Portland

The Oldsmobile Co.

Broadway at Couch Of Oregon Phone Bdw. 2270