

TOWNSEND BILL FULL OF GOOD FEATURES

Federal Road Measure Solves Right-of-Way Problem.

REAL AUTHORITY IS GIVEN

Federal Commission in Charge to Have Full Power to Condemn if They Are Held Up.

"One of the most praiseworthy features of the national highways measure recently introduced in congress by Senator Townsend of Michigan, is that relating to road rights of way," declares W. D. Albright, northwest manager of the B. F. Goodrich Rubber company.

"Perhaps no single feature of road work in the past has caused state highway commissioners as much trouble as that of getting adequate right of way, properly located.

"Whenever plans for a new road are announced it is human nature for those who live along the way, either to exert pressure to have the thoroughfare constructed in front of their door or else to force the highway department to make detours in order to save cutting through a piece of property.

"Such a policy always reacts against the owner in the long run, since the more direct the road and the better located, the greater travel will be and the less the cost of maintenance.

Federal Authority Given.

"It follows, too, that increased property values will more than offset concessions made to the state.

"Unfortunately we are not all fully educated to a proper understanding of this phase of road work, and as many state laws do not give the highway commissioner full authority, our main roads are usually as full of kinks as a pickaninny's hair.

"This not only impairs the usefulness of the road, but adds considerably to the factor of danger, for frequently abrupt curves are made necessary by these detours.

"Under the provisions of Mr. Townsend's measure creating a national highway system, the federal highway commission besides having general supervision over location and construction is authorized to require of the state or any civil subdivision thereof, any rights of way deemed necessary to main trunk lines.

"Thus where state highway departments have not the full authority to enter into condemnation proceedings, the burden of obtaining rights of way is placed on federal authorities.

Sixty-six Feet for Road Width.

"Under this act it will be possible to construct the highways with full regard for economic conditions, gradients, drainage and other phases entering into efficient highway construction. More than that, the measure provides for rights of way of not less than 66 feet in width save in exceptional cases, thus assuring roadways which will be adequate to future traffic needs.

"The Townsend bill is a mighty progressive step ahead and this important measure should have the united support of all interested in good roads and the improvement of our roads and highways."

DIAMOND RAISES GUARANTEE

Popular Tire Now Adjusted on 6000 and 8000-Mile Basis.

The Diamond Rubber Co., Inc., of Akron, O., announced today an increased mileage adjustment to Diamond tire users and dealers that is in keeping with actual results obtained from these famous tires—6000 miles on fabric tires and 8000 miles on Diamond cord tires. The new adjustment also applies to every Diamond tire of future or past date, including tires in the hands of car owners or dealers.

Diamond users and Diamond dealers have long known the big mileage in Diamond tires—the users own tires, handled here by Archer & Wiggins. The Diamond Rubber company has marked up its adjustment to 6000 miles for Diamond fabric tires and 8000 miles for Diamond cord tires respectively—merely to measure out a definite share of the superb mileage that the wonderful strength and endurance Diamond tires have in them as shown from thousands and thousands of satisfied users.

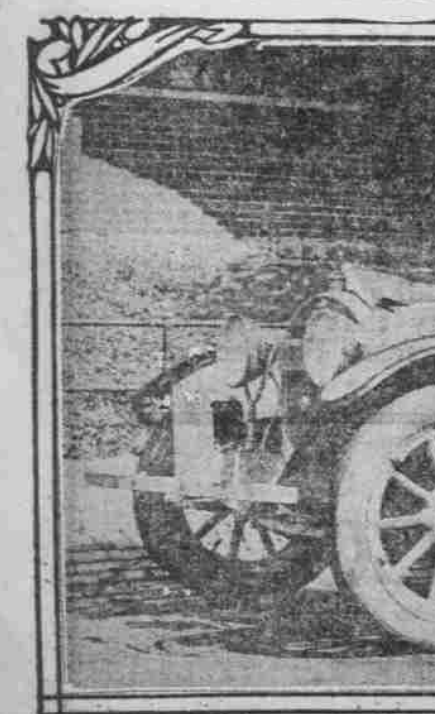
Valve Springs Break Heads.

Valve springs that are too stiff may close the valves with so much force that the heads may be broken from the stems or they may break the stems at the key slots. On the other hand, valve springs that are too weak to hold the valve on the cam will make the engine weak at high speeds and produce chattering owing to belated seating of the valves. In this connection it must be remembered that too stiff valve stems, even if they do not injure the valve seats by constant hammering, are consuming power that could be better used elsewhere.

Clogged Oil Holes.

The carefully kept motor truck needs frequent touching up of its paint, and in performing this operation care should be exercised to see that exposed oil holes are stuffed with felt or waste to prevent their being painted over. Failure to observe this precaution may result in their being clogged with paint.

HOOD RIVER MOTOR CAR DEALER AND WIFE TOUR TO NEW YORK.



MR. AND MRS. E. A. FRANZ IN THEIR HAYNES BIG SIX AT HAYNES FACTORY, KOKOMO, N. Y.

PERFORMANCE COUNTS

Chronology of A Truck Buyer

Monday:
Send for catalog and descriptive literature on MACK trucks.

Tuesday:
Discuss with salesman my problem and get advice on truck model best adapted to meet my requirements.

Wednesday:
Telephone several owners of MACK model; I am advised to buy and learn their experience.

Thursday:
Make special effort to locate a fault-finding MACK owner and get reason for his complaint.

Friday:
Investigate International Motor Co.'s experience in truck manufacture and find out reputation of local agent for service and fair dealing.

Saturday:
Satisfy myself first as to every detail of investigation, claims of salesman and experience of MACK owners, then place the order for delivery, with the

INTERNATIONAL MACK CORP.
Tenth and Davis Sts.
Phone Broadway 691

PERFORMANCE COUNTS

HOOD RIVER FOLKS TOUR

MR. AND MRS. E. A. FRANZ MOTOR TO NEW YORK.

Great Roads East of Chicago. They Say, Where "They Know How to Make 'Em."

HOOD RIVER, Or., July 26.—(Special.)—"I can add my personal recommendation of Goodyear rib cord tires," writes E. A. Franz, local motor enthusiast and dealer, to his wife, E. A. Franz, after a transcontinental tour.

Mr. Franz, accompanied by his wife, left Hood River on June 4 for a visit at their old home, Dolgeville, N. Y. They had planned to tour Yellowstone park, but on arriving in Idaho it was learned that roads to the national park were blocked and Mr. Franz hit off to the south over the Lincoln highway. He reports in his letters that the ways were rough and trying over the Blue mountains, but that the Lincoln highway was in comparatively fine shape.

"We did have a little trouble along in Nebraska on the heels of the cyclone that struck that country a terrible wallow," he writes. "The traffic mud was not pleasant and for miles we went through water. At one place we were held up part of a day until the road was drained of four feet of water.

"But those roads east of Chicago! Son, they know how to make 'em. We skinned along in delightful fashion. The going was fine all the way to New York City."

The journey of 3800 miles was made aboard a Haynes Big Six, for which Mr. Franz' concern here is agent, Mr. and Mrs. Franz visited Kokomo, Ind., en route to New York, and stopped to see how the Haynes is made. The entire trip east was made without a change of tires and without the least car trouble.

On Being Prepared.

One of the principal factors in doing good work of any sort lies in being prepared for the job you are going to tackle. This is something the new car owner often fails to realize. You cannot properly wash a car, grind the valves, clean a spark plug or do any of the other jobs necessary to keeping the car in good running order without be-

ing perfectly equipped for the work. By degreasing the car owner collects the equipment to enable him to finish each job he tackles in a workmanlike and satisfactory manner.

Things to Take With You on the Auto Tour.

Here's a Short List That the Car Owner Will Find Convenient.

- (a) One roll of 3/4-inch black tape or insulating tape (purchase at electrical or accessory store) used for binding together any small broken parts, such as gasoline lines, chafed wires or broken connections, leaky water hose, etc.
 - (b) One spool of heavy, soft copper wire, used for binding or connecting two parts temporarily as the case demands.
 - (c) One good tire repair kit containing assortment of patches, talc, sand paper, etc. Spare tubes and inflated spare tire on rear.
 - (d) One-half set of extra spark plugs. Be sure that these are of the correct length and type of thread. (Standard 3/8-inch 18-thread.)
 - (e) Two one-pound cans of medium graphite grease for shackles, bolts, rear axle brake rock shafts, steering gear tie rod; this grease is also correct for universal joints if the trip is to be of considerable duration.
 - (f) One box of assorted cotter pins.
 - (g) One box of assorted nuts and lock washers.
 - (h) One standard wire cable tow rope. (Not for you, but for the other fellow.)
 - (i) One small extension lamp to operate from dash light socket.
- Don't rush a repair job. Remember, "What is worth doing at all is worth doing well."

Cut Your Tire Cost in Half

and Enjoy puncture proof service besides!

The above statement sounds almost too good to be true—doesn't it?

Yet there are 600,000 motorists in the United States—many of them in your section—who are daily enjoying these advantages.

A new principle of tire construction—invented and perfected by Chas. C. Gates, E. M.—makes this unusual economy and care-free comfort possible.

This new principle, which incorporates your casing within a new factory built Gates Half-Sole Tire, gives you a better tire than your original one—because it

has double fabric strength and double cushion resiliency.

The double fabric and cushion, the extra side walls extending completely over the bead and under the rim, gives you a sturdy, reinforced tire that is 20% oversize—and puncture-proof besides.

Thousands of motorists are already profiting by these advantages, and this saving is now available to you.

There are 1254 authorized service stations in the United States and at every one of them you will find an expert ready to serve you.

Authorized Service Stations Conducted by the Dealers Listed Below:
(Now 1259 in the United States and Canada)

PORTLAND—Cowan Tire Service Co., 420 Alder St.

OREGON

ASTORIA—Fish's Tyre Shop.
BAKER—More Mileage Tire Co.
CONDON—Shelley Garage.
CORVALLIS—A. G. Held.
DALLAS—Shreve's Garage.
EUGENE—Jag Moore.
GRANTS PASS—W. H. Condit Tire Shop.
HEPNER—Stephen M. Irwin.
HOOD RIVER—Heights Garage.

JUNCTION CITY—S. M. Fries.

KLAMATH FALLS—Charles B. Johnson.

LA GRANDE—C. R. Leighton & F. E. Oxner.

LEBANON—Frank Doellittle.

MEMPHISVILLE—B Street Garage.

MEDFORD—F. R. Roberts.

NEWBERG—W. S. Strick.

PENDELTON—Bradley Tire Shop.

SALLEN—Quackenbush Auto Supply Co.

SILVERTON—P. W. Neftaker.

THE DALLES—Gates & Co.

WOODBURN—N. Becker & Son.

WASHINGTON

ABERDEEN—Searis Spencer, 511 E. Wishkah St.

CENTRALIA—Centralia Tire Co.

VANCOUVER—Cherry & Cherry.

WALLA WALLA—Goodman's Tire Shop.

GATES HALF SOLE TIRES

REGISTERED U. S. PAT. OFF.

Manufactured by the Gates Rubber Company, Denver

FOREIGN DEMAND IS BRISK

CAR MAKERS BUILDING UP EXPORT TRADE.

Call From Philippines, Japan, South America One of Big Reasons for Auto Shortage.

Some who are chafing at the delay in getting cars are at a loss to understand why the factories should be so behind in their orders. The reasons are several and good ones.

To begin with, the demand has greatly increased, as many persons withheld their buying of new cars while the war was in progress. The factories were down to a very low rate of production toward the end of 1918, and it took a little time to get back into the swing after the restrictions on production were removed. Even the plants that are back to normal are still finding difficulty in getting material and parts.

Not the least of the factors aggravating the situation is the urgency of the present psychological moment to extend foreign business even at the risk of sacrificing some business in the home market.

A New York dealer who recently made a trip to the factory found his explanation of the difficulty in obtaining cars as he passed through the shipping department and saw the number of cars made and packed. Even prohibitions that have existed against the exportation of automobiles to England and France have not prevented an increase of exportation of automobiles to the far east, and South American markets have been developing in the meantime.

striking instances are the exports to the Philippine islands, which, for the four months ended April 30 this year, exceeded in value the whole exportation of automobiles for the islands in 1918, and the number for that period was two-thirds of the total number exported in 1918.

To Japan for the four months mentioned in 1919 the automobiles exported were considerably in excess of the total number for 1918. The number to Java for the first four months of 1919 was about the same as for the whole preceding year.

TUBES VARY MUCH IN SIZE

Of 12 Makes Examined. No Two of the Same Diameter.

A set of interesting figures has just been completed by the Michelin Tire company, showing the varying diameters of inner tubes of the same branded size.

Most motorists probably believe that all inner tubes, made for a certain size of tire, are of the same length and diameter, but this is not the case.

Of 12 leading makes of inner tubes recently measured in the Michelin laboratories, no two were alike in diameter, the difference between the smallest and the largest being as much as 1/8 per cent.

Driving Tip.

Cultivate the habit of coasting around corners or going into second speed. Turning corners at speed imposes intense strains on all parts of the mechanism and should be avoided for that reason, in addition to which it makes for skids. Further, turning at speed is exceedingly bad for the tires.

NEW PROCESS McGRAW TIRES

As good as Money and Brains can Build and are Guaranteed

Fabrics 6000 Miles
Cords 8000 Miles

NON-SKID

30x3 1/2 ... \$20.50
34x4 \$32.75
Others in Proportion

TUBE FREE WITH EACH TIRE

We Pay Postage on Mail Orders.

Oregon Tire Co.
61 FIRST ST., COR. PINE.
Mails 7415.

BUICK EXPERTS

BUICK REPAIRS EXCLUSIVELY

32,000 sq. ft. floor space.
Live or dead storage.
Cheap rates.

PARTS SUPPLIES

PORTLAND BUICK REPAIR CO.
N. W. Cor. Sixteenth and Jefferson St.
Portland, Or. Main 3419

GMC Service

is responsible for the recent purchase of 3 G. M. C. Trucks by

The Ryan Fruit Co.

They now operate a fleet of 12 G. M. C. Trucks.

Wentworth & Irwin, Inc.

Truck Headquarters, 200 Second St., Cor. Taylor

MIRACLE OIL

COMPLETES LUBRICATION

It Eliminates Friction and Prolongs the Life of Any Gasoline Motor

25% MORE MILEAGE POSITIVELY GUARANTEED

TESTIMONY OF KNOWN EXPERTS

From Mr. David Buick, founder of the BUICK MOTOR CAR CO. and inventor of the Overhead Valve MOTOR: "I would not be without MIRACLE OIL in my car, as I find a much smoother running motor, with a great saving of gasoline."

From Mr. Atkinson, CHIEF ENGINEER IN CHARGE OF METALLURGICAL DEPT. WELLS MOTON CO., DETROIT: "Your theory of UPPER LUBRICATION is the correct one, and the motoring public should receive MIRACLE OIL with open arms."

From Mr. Carlson, Mgr. PACKARD SERVICE at PACKARD PLANT, DETROIT: "Your theory of UPPER LUBRICATION is absolutely correct and we find through the use of MIRACLE OIL a much smoother running motor, a big saving in gasoline and no carbon troubles."

O'NEILL WHIPPLE

409 Burnside (Between 9th and 10th Sts.), Portland
LIVE COUNTY AGENTS WANTED