

NOT ALWAYS TRAIN THAT DOES DAMAGE

Sometimes the Motorist Runs Into the Cars.

SOME PERTINENT FACTS

Southern Pacific Official Urges on Car-Owners to Be More Careful at Rail Crossings.

"During the first four months of the calendar year," said R. J. Clancy, assistant to the general manager of the Southern Pacific company, "our records show that of the 151 grade crossing accidents involving automobiles 29 stalled on the crossing and were struck by the train; 68 attempted to cross

officers of the national automobile chamber of commerce were re-elected at the meeting of the directors in Buffalo July 16.

Hugh Chalmers of the Chalmers Motor company is again first vice-president; R. D. Chapin of the Hudson Motor Car company, second vice-president (passenger car division); Windsor T. White, the White Motor company, second vice-president (motor truck division); C. C. Hanch, Maxwell Motor company, secretary, and H. H. Rice, Chevrolet Motor company, treasurer.

LON R. SMITH WITH MIDWEST

Buda Engine Sales Chief With Another Concern.

INDIANAPOLIS, July 19.—The Midwest Engine company has announced that Lon R. Smith, sales manager of the Buda company of Harvey, Ill., has been obtained as general sales and advertising manager, and will take up his new duties June 1.

"This," said John C. Wood, president of the Midwest company, "is the final step in building up our organization to a point where Midwest engineering, production and sales will keep abreast of each other. We have an ambitious programme ahead of us, and to carry it out successfully have long recognized that it would call for aggressive merchandising of a high order. Mr. Smith comes to us with an enviable engineering and sales record. In the power field the man who handles sales must

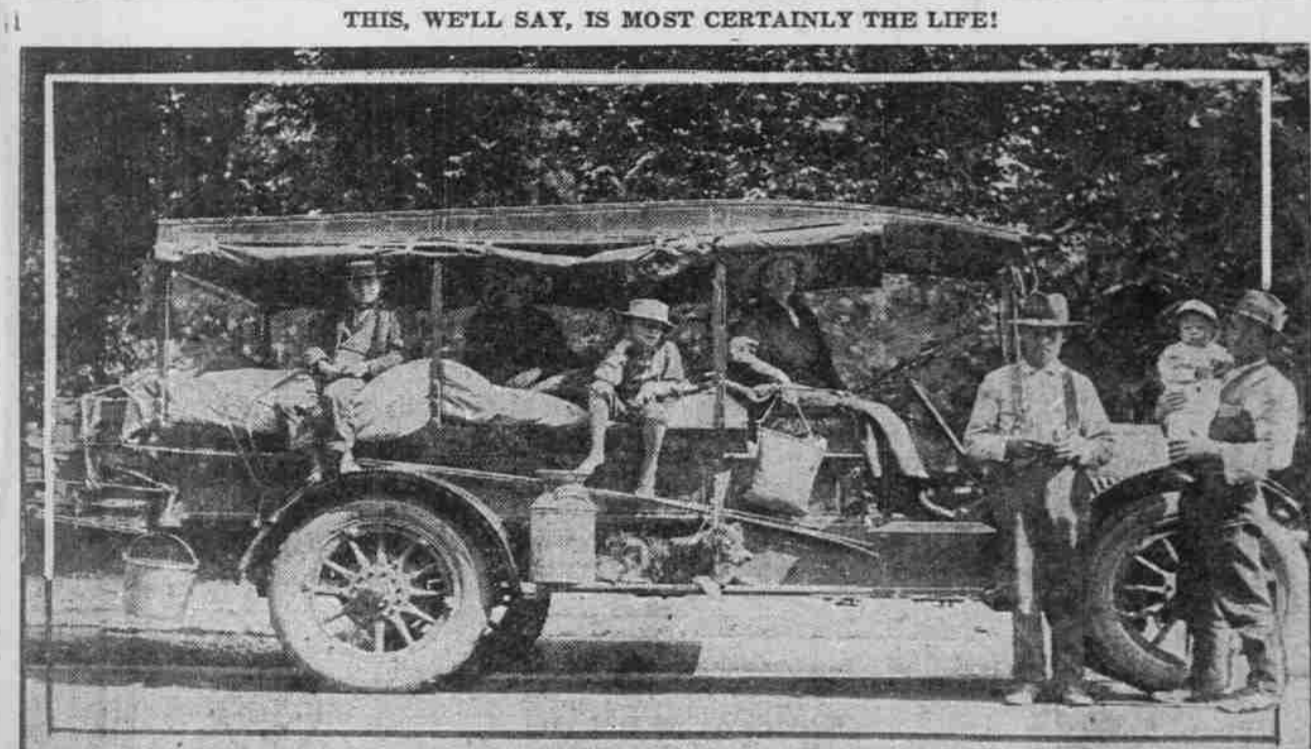
HERE'S ATTRACTIVE PLACE FOR CAMPING

It's at Junction of Molalla River and Its North Fork.

40 MILES FROM PORTLAND

Natural Park "Discovered" by Automobile Men in Week-End Fishing Trip in Hupmobile.

A natural park at the intersection of the Molalla river and the north fork of that stream was explored last week-end by a quintet of motor folk who enjoyed every minute of the two-hour run from Portland in two Hupmobile cars.



COUNTING THE BABY AND ARTHUR, THE POPULAR COLLIE, THERE ARE EIGHT TO THE FAMILY PARTY TOURING IN "OLD FAITHFUL," THE OLDSMOBILE TRUCK.

A. O. Jones, Myrtle Creek farmer, decided to take the family and move to Argentina, Republic of South America, to join his brother on a big ranch there. He figured on driving to New York, camping at night and enjoying life, but his ideas of comfort didn't include stowing seven folks, one a baby, dog, grub, cooking things, clothes, household articles and camping outfit in one touring car. Not for him. He was in a quandary when one day in Portland he sighted a new Oldsmobile truck. Here was room a-plenty, with pneumatic tires and electric lighting and starting equipment. "Just the thing," said he, and bought a truck from the Oldsmobile company of Oregon. Here's the result, snapped just before the party set out on their long trip a few days ago. You can spot Mr. Jones from the fact that he's holding the baby.

Midwest Engine company has built every kind of engine, including the internal combustion type used in Holt Caterpillar tractors, but no intention is given as to the company's permanent attitude toward the latter field.

company, Mrs. Menzies, H. R. Roberts, western representative of the Hupp Motor Car company; Mrs. Roberts, and Fred Rutledge, territory man for the National Motor Car and Vehicle company.

THIS, WE'LL SAY, IS MOST CERTAINLY THE LIFE!

HOW TO TELL ONE OF "LIVE" RUBBER FROM DEAD.

Run Your Palm Over Tread, and If Rubber Is Rough and Granular It Is of Poor Quality.

There are almost as many mysterious elements in rubber as in electricity. We speak, and quite correctly, of "live rubber," because the strange substance really seems to possess life long after it is mixed with chemicals and foreign substances and manufactured into tires and other commercial commodities.

Buyers and users of automobile tires often ask: "How can I tell a live, fresh tire from one that is stale and lifeless?" The answer is: "By touch."

It may be that you will have to practice; if so, take a tire you know to be fully a year old. Press your thumb down hard upon the surface—as though you were going to make a thumb print. Do that several times and try to make the rubber move.

You will see there is little or no response," according to the amount of life left in the rubber.

Try to drive your thumb nail into a live rubber and the "come back" from the substance will be so strong your nail will scarcely leave a mark. A nail pressed into the surface of a dead tire will leave a scar according to the amount of life left in the rubber.

"How do you tell whether a used tire is made of good rubber?" a question recently put to J. S. McClurg, factory manager of the new Carlisle cord tire.

Mr. McClurg has been in the tire business for 25 years and is considered one of the leading authorities of the United States. "One very simple and sure method," he said, "is to wipe the dust from the rubber and run the palm of your hand over it. If the rubber is slick and shiny it is of good quality, but if it is rough and granular you may feel assured it is of poor quality. A properly made tire of the best materials, such as we claim the Carlisle cord to be, should, when bounced on the floor, be as lively and nervous as a thoroughbred race horse."

ST. LOUIS TO TRY NEW PLAN Licensed Watchmen to Look After Cars That Are Parked.

Eastern cities, just as those on the Pacific coast, are struggling to devise ways and means of effectually checking automobile thieves.

Garage Floor Space. In planning the home garage, remember that for a single car the minimum floor space will be 12 feet by 20 feet if you purpose doing any work on the vehicle in its shelter. Also these dimensions do not allow room for either a work bench or for storage space, they are simply the irreducible minimum for the man who intends to take care of his own car.

SIMPLE TEST FOR TIRES

HOW TO TELL ONE OF "LIVE" RUBBER FROM DEAD.

Run Your Palm Over Tread, and If Rubber Is Rough and Granular It Is of Poor Quality.

There are almost as many mysterious elements in rubber as in electricity. We speak, and quite correctly, of "live rubber," because the strange substance really seems to possess life long after it is mixed with chemicals and foreign substances and manufactured into tires and other commercial commodities.

Buyers and users of automobile tires often ask: "How can I tell a live, fresh tire from one that is stale and lifeless?" The answer is: "By touch."

It may be that you will have to practice; if so, take a tire you know to be fully a year old. Press your thumb down hard upon the surface—as though you were going to make a thumb print. Do that several times and try to make the rubber move.

You will see there is little or no response," according to the amount of life left in the rubber.

Try to drive your thumb nail into a live rubber and the "come back" from the substance will be so strong your nail will scarcely leave a mark. A nail pressed into the surface of a dead tire will leave a scar according to the amount of life left in the rubber.

"How do you tell whether a used tire is made of good rubber?" a question recently put to J. S. McClurg, factory manager of the new Carlisle cord tire.

ST. LOUIS TO TRY NEW PLAN Licensed Watchmen to Look After Cars That Are Parked.

Eastern cities, just as those on the Pacific coast, are struggling to devise ways and means of effectually checking automobile thieves.

Garage Floor Space. In planning the home garage, remember that for a single car the minimum floor space will be 12 feet by 20 feet if you purpose doing any work on the vehicle in its shelter. Also these dimensions do not allow room for either a work bench or for storage space, they are simply the irreducible minimum for the man who intends to take care of his own car.

COQUILLE TO GET BRIDGE

County Bonding Programme to Aid Roosevelt Highway.

MARSHFIELD, Or., July 22.—(Special.)—The proposed county bridge at Coquille, which will span the Coquille river, is part of the county bonding highway system and will fit into the Roosevelt highway programme of a coast road through western Oregon.

Instead of approaching the Molalla county through Elyville and Mulino, motorists may, if they choose, follow the pavement of the Pacific highway to the northern edge of Canby and then cut cross-country over a fairly good road, connecting with the Elyville-Mulino route at the village of Liberal.

Under ordinary circumstances this optional route is perhaps preferable, due to the fact that there are a good many uneven stretches of roadway in the highway which leaves Oregon City via upper Seventh street hill and passes through Elyville on its way to Mulino, Liberal and Molalla.

"We thought at first that we were discovering a new camping place but before we pitched tent Saturday night at least 100 automobile parties passed us in search of shaded retreats further up the Molalla," said Mr. Menzies.

When kerosene is used as fuel in the motor tractor it will be found necessary in many cases to change the oil in the crankcase after every 20 hours of running. This is because of the tendency of kerosene to condense, when

VICTORY Mitchell SIX

A FEW FOR IMMEDIATE DELIVERY

After months of famine, we have received several carloads of the new Victory Model Mitchell Six and we have a few carloads on the way.

We have filled the orders of those who have waited patiently and who would be satisfied with nothing less than the Victory Model and we are now in position to make immediate delivery upon a limited number of new orders.

To understand and appreciate the unprecedented demand upon the factory from all over the country for the Victory Six you have but to ride in and drive the new Mitchell.

It is a car of unequalled riding and driving comfort, due in part to the unique Mitchell cantilever springs, the 120-inch wheelbase and the splendid balance of the car throughout.

We feel safe in saying that the Mitchell is a PERFECTED LIGHT SIX, perfected mechanically, in body lines and in appointment. It is our judgment that the new Mitchell, more nearly than anything else, represents that which people want in a light six.

If you would have one for use this summer, order now.

A Happy Combination
A GOOD car backed by an old, reliable concern, maintaining efficient service stations and adequate repair stocks in the principal cities of the Northwest.

Distributors of Mitchell and Jordan Cars for the Pacific Northwest

BROADWAY AT OAK, PORTLAND

Watch Other Drivers.

To avoid accidents when cranking the car by hand place the thumb against the index finger and take the handle between the four fingers and

Twist to the Right.

In making a temporary battery connection the stands should be twisted up tight, forming a loop by bending over

Watch Other Drivers.

To avoid accidents when cranking the car by hand place the thumb against the index finger and take the handle between the four fingers and

Twist to the Right.

In making a temporary battery connection the stands should be twisted up tight, forming a loop by bending over

Kerosene as Tractor Fuel.

When kerosene is used as fuel in the motor tractor it will be found necessary in many cases to change the oil in the crankcase after every 20 hours of running. This is because of the tendency of kerosene to condense, when

Watch Other Drivers.

To avoid accidents when cranking the car by hand place the thumb against the index finger and take the handle between the four fingers and

Twist to the Right.

In making a temporary battery connection the stands should be twisted up tight, forming a loop by bending over

Watch Other Drivers.

To avoid accidents when cranking the car by hand place the thumb against the index finger and take the handle between the four fingers and

Twist to the Right.

In making a temporary battery connection the stands should be twisted up tight, forming a loop by bending over

OFFICERS ALL RE-ELECTED

National Automobile Chamber of Commerce Satisfied. President Charles Clifton of the Pierce-Arrow Motor Car company and all the

WINTHER TRUCKS

ALWAYS DEPENDABLE

1 1/2, 2, 3, 4, 5, 6 and 7-ton Capacities

Also Four-Wheel Drive
1 1/2, 2 and 3 1/2-ton Capacities

Oregon Motor Car Co.

Distributors
PARK AND DAVIS STREETS

RACINE TIRES

HERE we reveal another of the extra tests that make Racine Tires better tires. Each of these extra tests is vitally important. Combined, they promise the utmost in mileage for Racine Tire users.

Racine Country Road Tires are specially built to resist the wear and tear of country road service—5000 mile guarantee. Let us show you this tire triumph.

Sold by Dealers Everywhere
Distributed in Northwest by
Ballou & Wright
Portland Seattle

For Your Own Protection Be Certain Every Racine Tire You Buy Bears The Name
RACINE RUBBER CO., Racine, Wisconsin