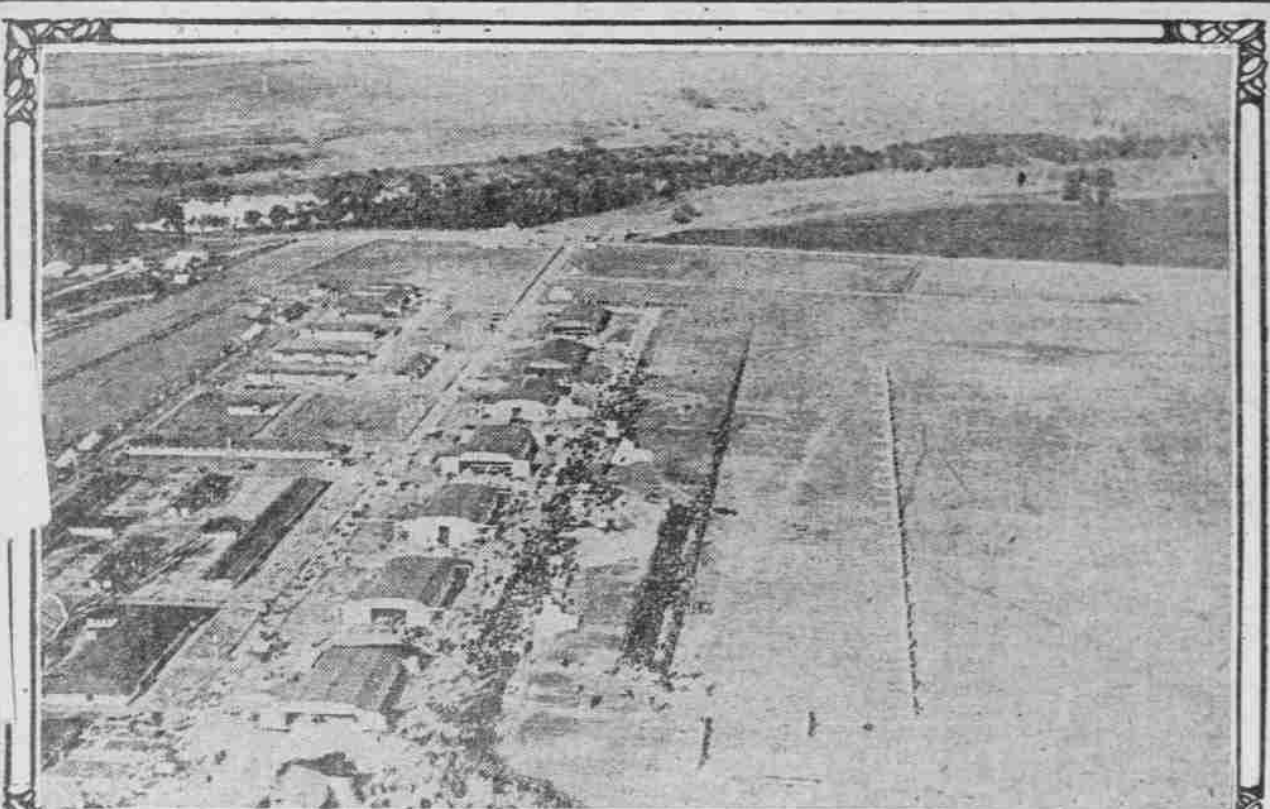


AIRPLANES IN U. S. NOW NUMBER 30,000, WITH FEW PLACES WHERE THEY MAY LAND SAFELY

Serious Airplane Accidents Due to Remarkable State of Affairs—Municipalities Seriously Consider Establishment of Landing Fields.



There Must Be Hundreds Of Such Fields As This Before Aviation Can Be Placed On Proper Commercial Basis.



A Host Of Landing Fields, Which Sends Both Aviator And Machine To The Hospital.

After braving fogs and head winds to successfully cross the Atlantic on the first trans-Atlantic voyage of a dirigible, the giant English R-34, the day after her arrival in the United States, met with a rather serious mishap when a 20-foot hole was torn in the gas bag. This accident would not have happened if proper facilities for housing the big airship existed, but unfortunately they did not and it was necessary to anchor her in the open, a sport to every breeze.



This Machine Was Obligated To Come Down In River Because Of No Suitable Landing Place On Shore.

The situation seems to have come about because only the engaged in airplane manufacture and navigation were far-sighted enough to regard the rapid development of the commercial possibilities of the aircraft service. Even after the war had clearly shown us the practicability of the flying machine, most people still persisted in regarding it in the light of an impractical toy.

ent in this country no less than 30,000 heavier-than-air machines, with more being turned out of the factories and added to this number daily. When this is fully appreciated it will be seen that the problem of where to land is the greatest confronting flyers and one which is bound to greatly retard air navigation unless quick action is taken on every hand.

of the city in letters 15 feet high and three feet wide. This will be perfectly clear to the aviator from high in the air.

Other Classes of Fields Described.

Second-class fields are those which conform to the specifications except that they are neither square nor rectangular. They have the same concrete runway in the shape of a cross, and in the center crossed arrows three feet wide with their heads pointing north and west.

Third-class fields fail to meet the specifications for the most important in the spirit of the specifications. It is possible only under certain weather conditions, or do not have any means of communication with the city. These are marked only with crossed hands three feet wide and one-tenth of the length and width of the field. Third-class fields may be rectangular and second-class fields may be L-shaped.

Fourth-class fields are those which can be used for landing only in case of emergency. All fields have a code letter and number painted in the northwest corner.

In endeavoring to establish municipal landing fields New York city and Philadelphia are in line with municipalities all over the United States who are endeavoring to prepare public landing fields with the aid of the army or navy.

Dealing directly with municipalities, the air service officers meet their officials and select suitable sites for landing fields and give all possible advice and aid toward having them put in shape.

It is a general principle that the purpose is for the government to cooperate with the cities which have an aerial mail station or where the cross-country routes of the government are for intermediate stations, but this in no wise restricts the establishment of fields in any city or town where local conditions seem to warrant it.

As it is now apparently only a question of a few months when public landing fields for airplanes will be as much a necessity for cities as are highways for a general motor car, as well as a good many states, as well as the mayors of many cities, if they do not wish to be behind the times, might well consider their action so early.

The time to pick corn is when the most sugar, which is when the melon is fully developed, is still "in the dough" or milky state. You can pull back the husk and examine it without picking the ear if you are careful. Corn does not keep long in prime condition, so eat or can it as soon as it is ready.

STOCK ENTRIES RECEIVED

UNUSUAL EXHIBIT FORECAST FOR GRESHAM FAIR.

Valuable Awards to Be Made for Herds and Individual Cows, Bulls and Heifers.

That "pigs is pigs" may be true enough, the management of the combined Multnomah County Fair and Manufacturers' and Land Products Show will admit, but they will exhibit the swine to be exhibited at the coming big fair to be held in September at such a level as to be the very aristocracy of pigdom.

All entries must be made and in place before 10 o'clock of September 15, when the fair will open.

The American Shorthorn Breeders' association has offered a premium of \$25 for the champion shorthorn bull owned in Multnomah county and exhibited at the county fair.

Another feature to attract will be the milk and butter test. The Babcock test for butterfat will be used. All entries must show the breed, sex, date of calving and no condiments, condition powder or drugs must be fed to the cows during the test.

The granges will have some good exhibits and these will be supervised by Mrs. Edyth Tozier Weathered. The best household skill, other than needle, 15 points; quality 25 points; artistic arrangement, 10 points. In the farm display a special prize will be awarded the most beautiful booth.

Tacoma Folk Cannot Stand Being Kicked.

Residents of Quine Street Complain of Its Being Called Medicinal Avenue.

TACOMA, Wash., June 26.—(Special.)—Tacoma folk who live on Quine street want the name changed because they receive their mail addressed to "Quine" street and often refer to it as Medicinal avenue.

HOQUIAM PLANS PARK DAY

Celebration to Be Held Thursday Is Featured by Name Contest.

HOQUIAM, Wash., July 25.—(Special.)—A contest to select a name for the new city park in Hoquiam will be conducted by the commercial club. The suggestions must be made by Thursday, Park day. The person offering the selected name must be at the park to receive the honor.

Plants With Home Gardeners

DEAR FRIENDS: We all know that the full fruits of the garden can only be attained by keeping it going with equal care and skill throughout the entire season.

Don't ever forget that all vegetables were wild and what might be called weeds originally before they were bred up to their present excellence by the most careful and painstaking effort.

A garden which reverts to nature always deteriorates rapidly and grows up to weeds, and though it is outside my province, I am quite contrary to the present theories of "child culture," permit me to say that this is just as true of children as of plants.

Onion Culture. This is a large subject, about which many books have been written. You can find them in the library.

Onion sets can be planted in succession in our favored climate and we can have green onions nearly the whole year around.

Wood ashes are very good for all vines, as the potash it contains helps produce the fruit which we want rather than the leaf and stem growth developed by nitrogen.

Letuce in Summer. Letuce does best in the cool wet weather of spring and fall or in a shaded cold frame.

Letuce does best in the cool wet weather of spring and fall or in a shaded cold frame. All grown now should be well irrigated and if possible protected from the hottest sun.

Letuce does best in the cool wet weather of spring and fall or in a shaded cold frame. All grown now should be well irrigated and if possible protected from the hottest sun.

Letuce does best in the cool wet weather of spring and fall or in a shaded cold frame. All grown now should be well irrigated and if possible protected from the hottest sun.

Letuce does best in the cool wet weather of spring and fall or in a shaded cold frame. All grown now should be well irrigated and if possible protected from the hottest sun.

Letuce does best in the cool wet weather of spring and fall or in a shaded cold frame. All grown now should be well irrigated and if possible protected from the hottest sun.

Letuce does best in the cool wet weather of spring and fall or in a shaded cold frame. All grown now should be well irrigated and if possible protected from the hottest sun.

Letuce does best in the cool wet weather of spring and fall or in a shaded cold frame. All grown now should be well irrigated and if possible protected from the hottest sun.

Letuce does best in the cool wet weather of spring and fall or in a shaded cold frame. All grown now should be well irrigated and if possible protected from the hottest sun.

Letuce does best in the cool wet weather of spring and fall or in a shaded cold frame. All grown now should be well irrigated and if possible protected from the hottest sun.

Letuce does best in the cool wet weather of spring and fall or in a shaded cold frame. All grown now should be well irrigated and if possible protected from the hottest sun.

Letuce does best in the cool wet weather of spring and fall or in a shaded cold frame. All grown now should be well irrigated and if possible protected from the hottest sun.

Letuce does best in the cool wet weather of spring and fall or in a shaded cold frame. All grown now should be well irrigated and if possible protected from the hottest sun.

Letuce does best in the cool wet weather of spring and fall or in a shaded cold frame. All grown now should be well irrigated and if possible protected from the hottest sun.

Letuce does best in the cool wet weather of spring and fall or in a shaded cold frame. All grown now should be well irrigated and if possible protected from the hottest sun.

Letuce does best in the cool wet weather of spring and fall or in a shaded cold frame. All grown now should be well irrigated and if possible protected from the hottest sun.

Letuce does best in the cool wet weather of spring and fall or in a shaded cold frame. All grown now should be well irrigated and if possible protected from the hottest sun.

Letuce does best in the cool wet weather of spring and fall or in a shaded cold frame. All grown now should be well irrigated and if possible protected from the hottest sun.

Letuce does best in the cool wet weather of spring and fall or in a shaded cold frame. All grown now should be well irrigated and if possible protected from the hottest sun.

Letuce does best in the cool wet weather of spring and fall or in a shaded cold frame. All grown now should be well irrigated and if possible protected from the hottest sun.

Letuce does best in the cool wet weather of spring and fall or in a shaded cold frame. All grown now should be well irrigated and if possible protected from the hottest sun.

Letuce does best in the cool wet weather of spring and fall or in a shaded cold frame. All grown now should be well irrigated and if possible protected from the hottest sun.

Letuce does best in the cool wet weather of spring and fall or in a shaded cold frame. All grown now should be well irrigated and if possible protected from the hottest sun.

Letuce does best in the cool wet weather of spring and fall or in a shaded cold frame. All grown now should be well irrigated and if possible protected from the hottest sun.

on the ground has a yellowish cast when ripe, together with a hard, rough, warty skin in that place; and, third is the way the melon "gives" under pressure by the hand.

Okra or Gumbo. Okra needs a rich soil and frequent shallow cultivation until the plants cover the ground.

Onion Culture. This is a large subject, about which many books have been written. You can find them in the library.

Onion sets can be planted in succession in our favored climate and we can have green onions nearly the whole year around.

Wood ashes are very good for all vines, as the potash it contains helps produce the fruit which we want rather than the leaf and stem growth developed by nitrogen.

Letuce in Summer. Letuce does best in the cool wet weather of spring and fall or in a shaded cold frame.

Letuce does best in the cool wet weather of spring and fall or in a shaded cold frame. All grown now should be well irrigated and if possible protected from the hottest sun.

Letuce does best in the cool wet weather of spring and fall or in a shaded cold frame. All grown now should be well irrigated and if possible protected from the hottest sun.

Letuce does best in the cool wet weather of spring and fall or in a shaded cold frame. All grown now should be well irrigated and if possible protected from the hottest sun.

Letuce does best in the cool wet weather of spring and fall or in a shaded cold frame. All grown now should be well irrigated and if possible protected from the hottest sun.

Letuce does best in the cool wet weather of spring and fall or in a shaded cold frame. All grown now should be well irrigated and if possible protected from the hottest sun.

Letuce does best in the cool wet weather of spring and fall or in a shaded cold frame. All grown now should be well irrigated and if possible protected from the hottest sun.

Letuce does best in the cool wet weather of spring and fall or in a shaded cold frame. All grown now should be well irrigated and if possible protected from the hottest sun.

Letuce does best in the cool wet weather of spring and fall or in a shaded cold frame. All grown now should be well irrigated and if possible protected from the hottest sun.

Letuce does best in the cool wet weather of spring and fall or in a shaded cold frame. All grown now should be well irrigated and if possible protected from the hottest sun.

Letuce does best in the cool wet weather of spring and fall or in a shaded cold frame. All grown now should be well irrigated and if possible protected from the hottest sun.

Letuce does best in the cool wet weather of spring and fall or in a shaded cold frame. All grown now should be well irrigated and if possible protected from the hottest sun.

Letuce does best in the cool wet weather of spring and fall or in a shaded cold frame. All grown now should be well irrigated and if possible protected from the hottest sun.

Letuce does best in the cool wet weather of spring and fall or in a shaded cold frame. All grown now should be well irrigated and if possible protected from the hottest sun.

Letuce does best in the cool wet weather of spring and fall or in a shaded cold frame. All grown now should be well irrigated and if possible protected from the hottest sun.

Letuce does best in the cool wet weather of spring and fall or in a shaded cold frame. All grown now should be well irrigated and if possible protected from the hottest sun.

Letuce does best in the cool wet weather of spring and fall or in a shaded cold frame. All grown now should be well irrigated and if possible protected from the hottest sun.

Letuce does best in the cool wet weather of spring and fall or in a shaded cold frame. All grown now should be well irrigated and if possible protected from the hottest sun.

Letuce does best in the cool wet weather of spring and fall or in a shaded cold frame. All grown now should be well irrigated and if possible protected from the hottest sun.

Letuce does best in the cool wet weather of spring and fall or in a shaded cold frame. All grown now should be well irrigated and if possible protected from the hottest sun.

Letuce does best in the cool wet weather of spring and fall or in a shaded cold frame. All grown now should be well irrigated and if possible protected from the hottest sun.

Letuce does best in the cool wet weather of spring and fall or in a shaded cold frame. All grown now should be well irrigated and if possible protected from the hottest sun.

Letuce does best in the cool wet weather of spring and fall or in a shaded cold frame. All grown now should be well irrigated and if possible protected from the hottest sun.

Letuce does best in the cool wet weather of spring and fall or in a shaded cold frame. All grown now should be well irrigated and if possible protected from the hottest sun.

Letuce does best in the cool wet weather of spring and fall or in a shaded cold frame. All grown now should be well irrigated and if possible protected from the hottest sun.

shaded place, as it needs a cool, moist soil, well cultivated. It is ornamental enough for the flower beds.

Peas and Snap Beans. While very different, both these vegetables take the whole season to mature and are ready for use in late winter and early spring, when they are most appreciated.

Summer Grown Peas. Our spring peas did well this year and we have a fine lot of them canned and many successive sowings now coming on for summer use.

Onion Culture. This is a large subject, about which many books have been written. You can find them in the library.

Onion sets can be planted in succession in our favored climate and we can have green onions nearly the whole year around.

Wood ashes are very good for all vines, as the potash it contains helps produce the fruit which we want rather than the leaf and stem growth developed by nitrogen.

Letuce in Summer. Letuce does best in the cool wet weather of spring and fall or in a shaded cold frame.

Letuce does best in the cool wet weather of spring and fall or in a shaded cold frame. All grown now should be well irrigated and if possible protected from the hottest sun.

Letuce does best in the cool wet weather of spring and fall or in a shaded cold frame. All grown now should be well irrigated and if possible protected from the hottest sun.

Letuce does best in the cool wet weather of spring and fall or in a shaded cold frame. All grown now should be well irrigated and if possible protected from the hottest sun.

Letuce does best in the cool wet weather of spring and fall or in a shaded cold frame. All grown now should be well irrigated and if possible protected from the hottest sun.

Letuce does best in the cool wet weather of spring and fall or in a shaded cold frame. All grown now should be well irrigated and if possible protected from the hottest sun.

Letuce does best in the cool wet weather of spring and fall or in a shaded cold frame. All grown now should be well irrigated and if possible protected from the hottest sun.

Letuce does best in the cool wet weather of spring and fall or in a shaded cold frame. All grown now should be well irrigated and if possible protected from the hottest sun.

Letuce does best in the cool wet weather of spring and fall or in a shaded cold frame. All grown now should be well irrigated and if possible protected from the hottest sun.

Letuce does best in the cool wet weather of spring and fall or in a shaded cold frame. All grown now should be well irrigated and if possible protected from the hottest sun.

Letuce does best in the cool wet weather of spring and fall or in a shaded cold frame. All grown now should be well irrigated and if possible protected from the hottest sun.

Letuce does best in the cool wet weather of spring and fall or in a shaded cold frame. All grown now should be well irrigated and if possible protected from the hottest sun.

Letuce does best in the cool wet weather of spring and fall or in a shaded cold frame. All grown now should be well irrigated and if possible protected from the hottest sun.

Letuce does best in the cool wet weather of spring and fall or in a shaded cold frame. All grown now should be well irrigated and if possible protected from the hottest sun.

Letuce does best in the cool wet weather of spring and fall or in a shaded cold frame. All grown now should be well irrigated and if possible protected from the hottest sun.

Letuce does best in the cool wet weather of spring and fall or in a shaded cold frame. All grown now should be well irrigated and if possible protected from the hottest sun.

Letuce does best in the cool wet weather of spring and fall or in a shaded cold frame. All grown now should be well irrigated and if possible protected from the hottest sun.

Letuce does best in the cool wet weather of spring and fall or in a shaded cold frame. All grown now should be well irrigated and if possible protected from the hottest sun.

Letuce does best in the cool wet weather of spring and fall or in a shaded cold frame. All grown now should be well irrigated and if possible protected from the hottest sun.

Letuce does best in the cool wet weather of spring and fall or in a shaded cold frame. All grown now should be well irrigated and if possible protected from the hottest sun.

Letuce does best in the cool wet weather of spring and fall or in a shaded cold frame. All grown now should be well irrigated and if possible protected from the hottest sun.

Letuce does best in the cool wet weather of spring and fall or in a shaded cold frame. All grown now should be well irrigated and if possible protected from the hottest sun.

Letuce does best in the cool wet weather of spring and fall or in a shaded cold frame. All grown now should be well irrigated and if possible protected from the hottest sun.

Letuce does best in the cool wet weather of spring and fall or in a shaded cold frame. All grown now should be well irrigated and if possible protected from the hottest sun.



An ideal unique Built to excel—by artists. That, in a word, is the principle which guides the makers of the beautiful Steger Piano.

STEGER the most valuable piano in the world

Lift Off Corns! Doesn't hurt! Lift touchy corns and calluses right off with fingers.



Tiny bottles of "Freezone" cost but a few cents at drug stores.