

### ROAD WORK IN CURRY NEEDS OUTSIDE AID

#### County Bonds to Limit and Now Seems Helpless.

### HIGHWAY BASIS IS ROUGH

#### Grading of Six and One-Half-Mile Stretch to Cost \$157,000. Latent Resources Large.

BY JOHN W. KELLY. GRANTS PASS, Or., July 26.—(Special.)—Either the state highway commission must spend a big sum of money to improve the one-graded road in Curry county, or it should not spend a cent and leave that county to its fate. Curry county is one of the poorest of the family of Oregon counties. Save for the one road, which connects with Bandon in Coos county, Curry is isolated so far as Oregon is concerned. Also it is just as isolated as regards California. There is one department store in Portland which has on its payroll more people than there are in all the 1498 square miles of Curry county. The merchandise in this same department store is valued more highly than the total assessed valuation of taxable property in Curry county. Two-thirds of Curry county is in forest reserve, and while this makes the county poverty-stricken now, the time will come when Curry's untapped timber will make it one of the richest counties in Oregon.

**Road Job Costs \$24,000 a Mile.** There is in Curry county one road job, under the direction of the highway commission, which will cost a stretch of 6 1/2 miles, and the contracts call for \$157,000. When a road-grading job costs some \$24,000 a mile it gives an idea of the dirt of the population. To inspect this work and gain a detailed idea of the road needs of Curry county, R. A. Birch, highway commissioner, and State Highway Engineer Nunn have traveled through the district from end to end. This particular road runs from Hubbard creek—about 1 1/2 miles south of Port Orford—to Brush creek. It is considered about the meanest part of the one road through the county.

Curry county's one, lone road skirts along the coast. Inland there is nothing but forest, mountains and wild game. It is estimated that 25 per cent of the wild game of the Pacific coast, such as bear, cougar and deer, are in Curry county. Cougars are such predators that several sheepmen have quit business because of the depletion of flocks. This road begins at the Coos county line, in the north, and it winds its way around and over mountains, almost always within sight of the Pacific ocean, until it strikes Del Norte county, in California. Most of the population of Curry is in the north and south ends, and these are thinly settled, so the paucity of people between the ends can be imagined.

**Coos Building Good Road.** At present Coos county is making a road from the Curry county line, for across the Curry are some of the finest dairies in the state, and the product of the dairies at Langlois, Denmark and Zuniway are freighted out to Eureka. Curry has a population of 238,000 road bond issue, which is its limit. Half of this sum is to be expended north of Rogue river, near Cochin ridge, on a road to a local station to be made by the state highway commission, and money from the remaining half of the population of the road between Pistol river and Brookings, where the road at times attains an altitude of 2500 feet. The settlements in Curry are few, and Eureka creek will be especially benefited by this southern development.

Mr. Booth, after his inspection, expressed himself as favoring the improvement of the road from the Coos county line to Gold Beach, but stated that to develop property it would require such a large sum that other counties would probably complain. Three hundred thousand dollars is a rough estimate for the development.

**Curry County Needs Aid.** It is impossible for Curry county to help itself. The population is small, the property available for taxation is small, and the county has no limit for road bonds. It must have outside aid. This aid must come from the state or federal government. No other county in Oregon would be more blessed by the Roosevelt highway than Curry county. Meanwhile, the coast highway on the state road map includes the county, so eventually the state will have to do more than it has done for the relief of Curry county. A million dollars will be spent for paving the Pacific highway through Marion county. Two-thirds of that sum would probably be required to build a standard state road through Curry, and that would provide only for grading.

Port Orford cedar, which appears like cheese and cuts as easily, grows on where there is no water on the Port Orford quadrangle. This cedar, some of which was used for airplane blocks in the service, is cut into immense railroad ties. Some of these ties eventually are used on roadbeds, but many of the ties chopped up by the settlers are worked up into furniture with a good road, these ties could be trucked out to Bandon, Coquille or Nye point, but now they are slung in a crane and shot down over a cable which runs from a high cliff to a rock in the open harbor. Necessity anchors under the cable and pick off the crates of ties. A port has been organized at Port Orford and a \$20,000 wharf will be built, but this only emphasizes the need of a suitable land highway.

**Fishing Chief Occupation.** At Gold Beach, the only county seat in the state which is not incorporated there isn't an incorporated town in Curry—Judge W. A. Wood conferred with Commissioner Booth and Engineer Nunn. Time was when there were 2000 persons at Gold Beach, whose chief occupation was trying to extract gold from the black sands, but now there are but a handful of residents, most of whom make a living fishing for or against the Wedderburn company, which owns all the sand on both sides of the lower reaches of the Rogue river. This stream is like some women—beautiful, but whose beauty is spoiled by a bad mouth.

Between Gold Beach and Brookings the lone road ventures along the edge of the ocean, with not a foot to spare. The wonder is that there are no more accidents. Under the most favorable conditions it is a 10-miles-an-hour road, but top speed for safety is five miles.

South of Brookings, a sawmill town, there is a road road to the California line. In this section are the only redwoods in Oregon. It is a good road on to Crescent City, Cal., which is the southern market for Curry county, just as Bandon, in Coos county, is in the north.

**California May Seek Business.** The object of Commissioner Booth in crossing the line was to confer with California highway representatives. In the recent road bond election in California \$400,000 was set aside for road work north of Crescent City to the Oregon line. The tourist route is from

### GOVERNOR TO NAME ARMORY BOARD SOON

#### Colonel May, Lieutenant Wallace, Captain Fisher, Chosen.

### FULL AUTHORITY VESTED

#### Elimination of Factional Differences Expected to Result Through Adoption of New Plan.

### MILLMAN FINED FOR FIRE

#### DONKEY ENGINE WITHOUT SPARK ARRESTER CAUSE.

### Forestry and State Officials Are Co-operating in Efforts to Prevent Blazes.

SALEM, Or., July 26.—(Special.)—Colonel John L. May of Portland, Lieutenant Paul B. Wallace of Salem and Captain Ben S. Fisher of Marshfield will be appointed members of an armory board to have full charge under the general staff of the national guard of the maintenance of all armories throughout the state, according to an announcement made by Governor Olcott this afternoon.

Colonel May, when retiring from the office of adjutant-general, recommended the creation of such a board and his suggestion met with the immediate approval of Conrad Stafrin, present adjutant-general. The general staff of the national guard, at its recent monthly meeting, joined in the recommendations of the two adjutant-generals, asserting that the purpose of the board is to outline and maintain a definite policy regarding the maintenance and use of armories throughout the state. It is also proposed that the board shall superintend the finances of each armory, to the end that each may be made self-supporting, or as nearly so as possible.

The selection of Colonel May, Lieutenant Wallace and Captain Fisher by the governor has the approval of the adjutant-general's office. Persons close to the armory situation in Oregon believe the creation of the new board will not only do away with many factional differences regarding their operation, but will provide means whereby they can be maintained and improved by private revenue rather than at state expense.

### Contracting Company Files Articles.

SALEM, Or., July 25.—(Special.)—Articles of incorporation have been filed here by the Western Contracting Company. The incorporators are C. H. Knowles, Bradley A. Ewers and A. H. Smith. The capital stock is \$5000 and the purpose of the company is to transact a general contracting business. Headquarters will be established in Portland.

Phone your want ads to The Oregonian. Main 7078. A 6095.

### BIG FORECLOSURE FILED

#### WESTOVER COMPANY DEFENDANT IN COURT ACTION.

#### Clearing of Title to Terrace Property and Settlement of All Claims Held Object of Suit.

Foreclosure of a \$200,000 mortgage on the Westover Terrace holdings, valued at \$500,000, is sought in suit filed in the circuit court yesterday by the Title & Trust company and John E. Daly against the Westover company, Lewis-Wiley Hydraulic company and International Realty Association of Oregon.

The Westover company, it appears, issued bonds totaling \$200,000 in October of 1912, which were secured by the Title & Trust company, which received a trust deed and mortgage to the property on the heights west of Portland, dated October 18, 1912, of those bonds, it is asserted that \$292,000 are still outstanding.

The plaintiffs contend that payments have not been made on the bonds and demand interest at 8 per cent from April, 1913, \$2500 in attorneys' fees and \$2500 as trustees' fees.

The action is to clear up the title to the property and settle all claims, says the attorney.

### HAWAIIAN GUARD HAS HOPE

#### Regular Army Officer Wants Command Under Command.

HONOLULU, T. H., July 26.—(Special.)—Major-General Charles G. Morrison, U. S. A., commanding the Hawaiian department, desires and is planning a bigger and better national guard for Hawaii. He is now negotiating with Washington, D. C., for arrangements, which, if perfected, will bring the militia under his command.

This will solve the problem which has been one of considerable anxiety since the Hawaiian territorial legislature practically cut the national guard off its appropriation bills.

### GOVERNOR TO NAME ARMORY BOARD SOON

#### Colonel May, Lieutenant Wallace, Captain Fisher, Chosen.

### FULL AUTHORITY VESTED

#### Elimination of Factional Differences Expected to Result Through Adoption of New Plan.

SALEM, Or., July 26.—(Special.)—Colonel John L. May of Portland, Lieutenant Paul B. Wallace of Salem and Captain Ben S. Fisher of Marshfield will be appointed members of an armory board to have full charge under the general staff of the national guard of the maintenance of all armories throughout the state, according to an announcement made by Governor Olcott this afternoon.

Colonel May, when retiring from the office of adjutant-general, recommended the creation of such a board and his suggestion met with the immediate approval of Conrad Stafrin, present adjutant-general. The general staff of the national guard, at its recent monthly meeting, joined in the recommendations of the two adjutant-generals, asserting that the purpose of the board is to outline and maintain a definite policy regarding the maintenance and use of armories throughout the state. It is also proposed that the board shall superintend the finances of each armory, to the end that each may be made self-supporting, or as nearly so as possible.

The selection of Colonel May, Lieutenant Wallace and Captain Fisher by the governor has the approval of the adjutant-general's office. Persons close to the armory situation in Oregon believe the creation of the new board will not only do away with many factional differences regarding their operation, but will provide means whereby they can be maintained and improved by private revenue rather than at state expense.

### Contracting Company Files Articles.

SALEM, Or., July 25.—(Special.)—Articles of incorporation have been filed here by the Western Contracting Company. The incorporators are C. H. Knowles, Bradley A. Ewers and A. H. Smith. The capital stock is \$5000 and the purpose of the company is to transact a general contracting business. Headquarters will be established in Portland.

Phone your want ads to The Oregonian. Main 7078. A 6095.

### BIG FORECLOSURE FILED

#### WESTOVER COMPANY DEFENDANT IN COURT ACTION.

#### Clearing of Title to Terrace Property and Settlement of All Claims Held Object of Suit.

Foreclosure of a \$200,000 mortgage on the Westover Terrace holdings, valued at \$500,000, is sought in suit filed in the circuit court yesterday by the Title & Trust company and John E. Daly against the Westover company, Lewis-Wiley Hydraulic company and International Realty Association of Oregon.

The Westover company, it appears, issued bonds totaling \$200,000 in October of 1912, which were secured by the Title & Trust company, which received a trust deed and mortgage to the property on the heights west of Portland, dated October 18, 1912, of those bonds, it is asserted that \$292,000 are still outstanding.

The plaintiffs contend that payments have not been made on the bonds and demand interest at 8 per cent from April, 1913, \$2500 in attorneys' fees and \$2500 as trustees' fees.

The action is to clear up the title to the property and settle all claims, says the attorney.

### HAWAIIAN GUARD HAS HOPE

#### Regular Army Officer Wants Command Under Command.

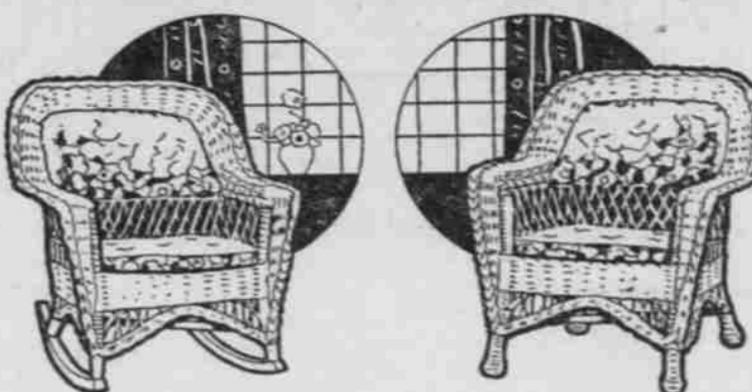
HONOLULU, T. H., July 26.—(Special.)—Major-General Charles G. Morrison, U. S. A., commanding the Hawaiian department, desires and is planning a bigger and better national guard for Hawaii. He is now negotiating with Washington, D. C., for arrangements, which, if perfected, will bring the militia under his command.

This will solve the problem which has been one of considerable anxiety since the Hawaiian territorial legislature practically cut the national guard off its appropriation bills.

## Powers--Featuring the Most Wonderful Line of Artistic Reed and Willow Furniture Ever Displayed Here

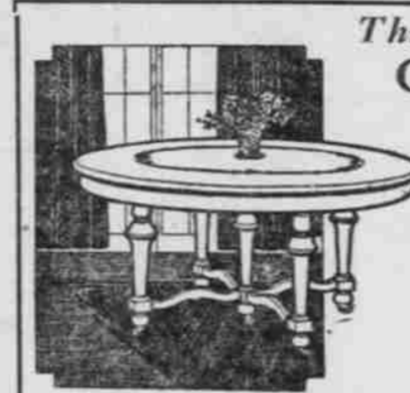
#### A Big Collection of Beautiful Pieces in Frosted Brown and Ivory. Coverings in the Newest Cretonnes and Other Fabrics

There is no more daintily attractive furniture for summer than reed and willow, and it affiliates so well with the bright-colored cretonnes now in evidence for draperies, cushions and table covers. It seems strange that we do not use reed and willow more for tables, desks, settees and lamps than we do, for it is attractive, comes in different finishes, is light to move, and easily taken care of. A room furnished in reed or willow has a simple, homelike appearance that appeals to everyone entering it.



- Restful Arm Chairs and Rockers
- Chaise Couches
- Davenport
- Tables
- Stools
- Sewing Tables
- Desks
- Lamps
- Settees
- Bird Cages

Seating Pieces in Wide Variety of Coverings to Match Any Color Scheme of Rooms Where This Furniture Is Adopted



Three Period Patterns in Oak Dining Tables Decidedly Underpriced

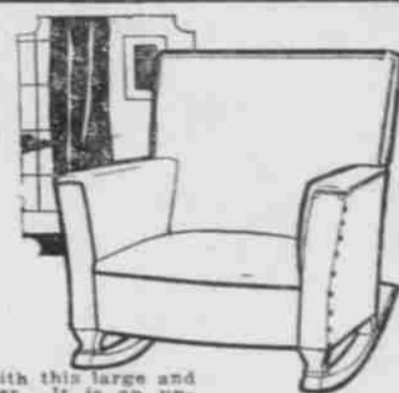
These tables come in 45 and 48-inch tops, and you may have a choice of leg and pedestal bases. William and Mary pattern, favored in so many homes. Come in tomorrow and make your selection—the prices are advantageous.

Extension Table With 46-inch Top, SPECIAL \$34.50

Extension Table With 48-in. Top, SPECIAL \$36.75

Extension Table With 48-in. Top, SPECIAL \$46.75

This Large Overstuffed Rocker A Big Special Value at \$29.75



Complete your living room with this large and comfortable overstuffed rocker. It is an unusual value with its deep spring seat, wing back and covering of high-grade imitation Spanish leather. A good looking chair and a restful one.

Use Your Credit

Powers—Headquarters for Baby Goods

\$106.75 Three-Piece Ivory Enamel Chamber Suite At the SPECIAL \$86.75



FULL SIZE BED, DRESSER, CHIFFONIER.

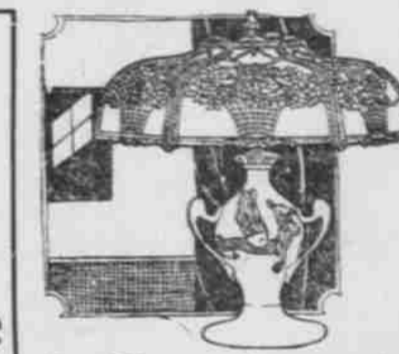
The charm of ivory enamel furniture is patent to even the casual observer, for it is so fresh and dainty that it is just the thing for the bedroom where we have light colors and pretty hangings. This is a very attractive suite of three pieces, and emphatically worth purchasing at this price.

Sold Separately, the Prices of the Various Pieces Are as Follows: \$36.75 Bed for - \$29.50 \$37.50 Dresser - \$30.75 \$32.50 Chiffonier \$26.50

We recommend this range for the small bungalow, flat, apartment, since it takes little space, and yet has four burners for cooking. The finish is black enamel, except for the white panel door of the oven. The clean-out tray and broiler are so easy to keep clean, being of white porcelain. Also has interchangeable oven. For cooking satisfaction and convenience we know of no better range at its price.

The Price of the A-B Cadillac Gas Range Is Only \$39.50 It Was Originally Built to Sell for \$52.

There Are Many Features of the New A-B Cadillac Gas Range That Make It the Best Range by Far



A Very Interesting Showing of Floor and Table Lamps

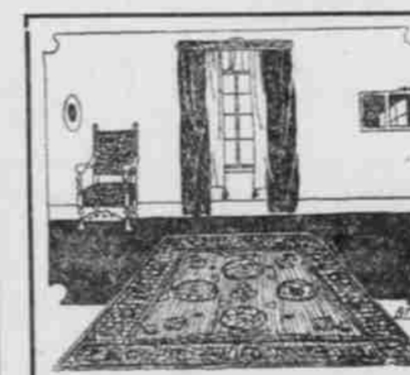
In Both Metal & Wood An attractive lamp adds much to the pleasure of a home, being at once an ornament and useful. It seems a pity to be without one or more when Powers has so many beautiful ones to choose from, and they can be bought on easy credit terms. Call in and see them.

## Layton Cooperage Company



Our kegs are made of the best assorted white oak, it's what we call grain alcohol stock. The wood contains no sap and it don't have to be paraffine lined inside. We have all sizes in stock and our prices are right.

Office 327 Water Street Phone Main 3147



POWER for RUGS of Every Size and Every Dependable Make Use Your Credit

If you are going to need a rug for any room of the house, we advise you to look over our big assortment, with splendid variety of patterns to choose from. There are all sorts of color combinations, and every kind of rug suitable for living room, bedroom, hall or porch.

\$45 for 9x12 AXMINSTER RUGS Pay \$5 Down—\$1 Week

\$39.50 for 9x12 VELVET RUGS Pay \$4 Down—\$1 Week

These are lovely rugs in soft, harmonious shades; choice of four patterns, all small designs. They are seamless and of good quality.

You'll Like the New JAPANESE RAG RUGS Cheerful, light-weight rugs that look extremely well with summer furnishings. Another splendid feature is their cleanliness. Pictorial or floral borders, plain or pattern centers.

Two Splendid Values in Arm Rockers Auto-Seat Patterns

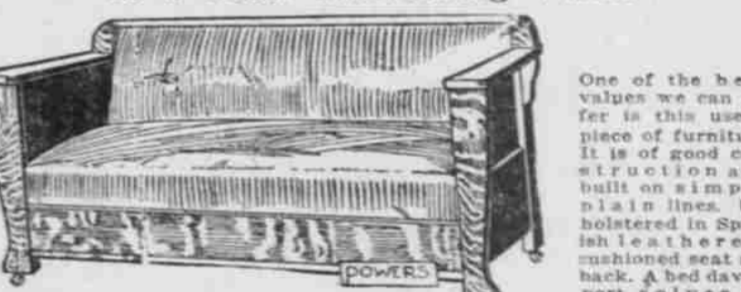
Regularly \$17.75, Special \$10.90

These rockers are made from selected oak stock, and are built substantially. They have deep spring seats upholstered in Spanish leatherette. Very good for all-round home use. An opportunity to add to the furnishings of the living room at little expenditure.



Use Your Credit

This BED DAVENPORT at \$54.75 Is a Most Interesting Value



Use Your Credit

Music When You Want It & as You Want It With This

Victrola VI Outfit

Consisting of a Handsome Victrola, Double-Door Record Cabinet, and Five Ten-Inch Double-Faced Records

No family can afford not to have a phonograph, to be deprived of all the pleasure that such an instrument brings into the home. Think of the enjoyment of being brought into touch with all the big things in the musical world. The young people will stay home evenings if they can dance to the music of a phonograph.

Terms \$5 Cash, \$1 Week

Drive Away the Dread of Washday With a Laundry Queen Electric Machine

Any woman who wants to be released from the dreadful tub, tub, rub of washday should induce her hubby to purchase one of these splendid power-driven washing machines. It not only washes every sort of article, from heavy blankets to light garments, but it rinses them, too. It is well made, mechanically, and, with even reasonable care, the tub should last five years. Better investigate at once.

Use Your Credit

## Ye Oregon Grill

BROADWAY AT STARK

## H. W. Manning

INVENTOR AND MANUFACTURER 69 Sixth Street, Portland, Or.

## Those Building or Remodeling Homes of Six to Eight Rooms Should Investigate the A-B PIPELESS FURNACE AT POWERS

