

### ASTORIA RUN MADE IN FOUR HOURS FLAT

#### Hudson Super-Six Does Fast Time Over Lower Highway.

#### DAVID KILTON AT WHEEL

Road Found Very Good, With Two Exceptions, One Near Astoria, for Whole 107 Miles.

Four hours flat was the time made last week by David Kilton, salesman for the C. L. Boss Automobile company in driving a Hudson super-six from Portland to Astoria by way of the lower Columbia river highway. He left Portland at 4:15 Wednesday

business section," said Mr. Hutchins, "and make it a place of real convenience, and it will be one of the greatest publicity assets you will ever have. We have equipped our park with tables, chairs and three cooking units. We have just built a rest house, of bungalow type. It has been comfortably furnished by donations from public-spirited citizens. "We have provided a registration booth, asking visitors to designate both their home addresses and their destination. It is interesting to read the expressions of appreciation jotted down by those who have partaken of our hospitality. "The park is a profitable investment on the part of storekeepers. All consumers make purchases that they would not have stopped for if we had no park."

#### HIGHWAY ROUTE IS CHANGED

Viewers Make Recommendations on McKenzie Road. EUGENE, Or., May 31.—(Special).—If the report of the special viewers appointed by the county court a few days ago to determine the location of a road to replace the bad road over Cogswell hill on the McKenzie highway is accepted, the new road will not follow the bottom lands at the foot of the hills as long planned but will be built on the side hill a few yards below the old one. The report of the

### INSPECTORS WATCH IN GOODYEAR PLANT

#### 1200 Men Devote Whole Time to Inspecting Tires.

#### SLIGHTEST DEFECT NOTED

Every Process of Manufacture of Tires Carefully Checked Up at Big Factory.

Now that good standard automobile tires have reached a degree of perfection permitting motorists to operate their cars with no more anxiety about their tires than about any other part of their machines, it is interesting to note just what part is played in tire-

# APPERSON

## 8

Built for Over 26 Years

Marvelous in Performance

Beautiful in Design and Finish

Entirely Complete in Equipment

## Fike-Horn Motor Co.

60 Broadway Phone Bdw. 1490

tires are taken, steaming hot, from the big vulcanizing vats, the wrappings are removed and the tires rigidly examined for any imperfections which may have developed through vulcanization.

Last Inspection Meticulous. "And in this last inspection our men are merciless. Sometimes a tire comes up for its last inspection with but a slight imperfection—usually in appearance only—intensified by vulcanization. The chances are 99 to one that it will run its full mileage with proper care. No one will ever know. But we insist that it be rejected.

"By the system of rigid inspection we insure the perpetuation of that uniform quality for which Goodyear tires have become known the world over. These 1200 inspectors who stand between our tire builders and the great tire-using public perform a service that is immeasurably beneficial to both, for they help the tire maker to maintain a high standard of efficiency and insure for the car owner the best tire that perfect materials and skilled workmanship can put together."

#### PORTLAND TO GET BRANCH

KELLY-SPRINGFIELD FACTORY TO PLACE STORE HERE.

J. H. Ainscough of Kelly Tire Sales Company, However, Will Continue to Handle Local Sales.

The Kelly-Springfield tire company will soon establish a factory distributing branch in Portland. This announcement was made here last week by F. H. Hearsch of San Francisco, Pacific coast manager, and H. M. Garne of Seattle, northwest manager for the Kelly-Springfield.

The new branch is to be established as soon as a suitable location can be obtained.

However, this branch, it also is announced, will not affect the retail business in Kelly-Springfield being handled by the Kelly Tire Sales company, of which J. H. Ainscough is manager. Mr. Ainscough will continue to handle Kelly-Springfield cords and fabrics and Kelly-Springfield truck solid tires, including the famous new caterpillar tread, as at present.

His sales have been mounting steadily since he took the local agency, and for the present month so far have been pretty nearly twice the amount for the same period in any previous month.

A bill was introduced in the Massachusetts legislature early in the year 1900 to require all motor vehicles operated in the city of Boston to carry fenders.

#### MANY STEWART PRODUCTS

SPEEDOMETER NOT ONLY ONE BY ANY MEANS.

Vacuum System, Searchlights and Bumpers a Few Others of "Big Ten" Products.

"It is a rather unusual thing to me," says Thomas M. Hart, manager of the local Stewart Products Service station, "that the average person still thinks of our company only as the speedometer maker.

"True, it was our first big product and Stewart speedometers are today the most universally used.

"But, in addition to this, we are also the largest manufacturers of gasoline feeds. In fact, our Stewart vacuum system is the only really scientific feed system ever devised.

"We are also the largest manufacturers of warning signals and searchlights (generally known as spotlights).

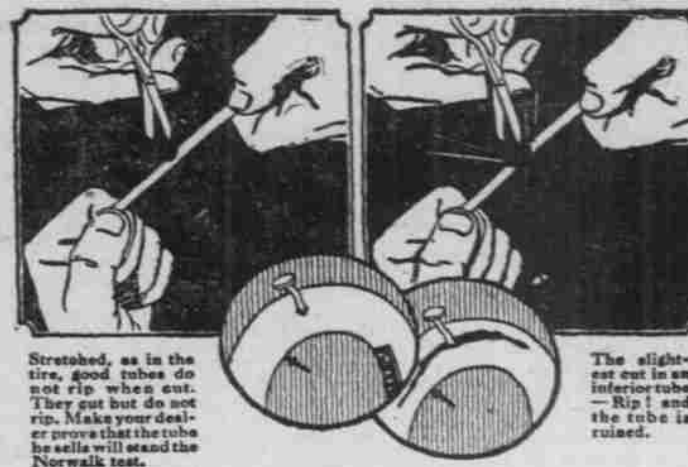
"In addition to this, we produce very large quantities of bumpers, called autoguards, and also spark plugs.

"However, I guess we are up against the same proposition as Heinke. The world knew him as the 'Pickle Maker' and was slow to think of him as anything else, notwithstanding the fact that he later on made a wide variety of articles. So he inaugurated the '57 varieties.'

"It was for this reason that we brought out the idea of the Stewart 'Big Ten' to impress motorists generally with the fact that, in addition to the Stewart speedometer, the Stewart factory makes nine other widely used products."

Don't let oil, grease or gasoline remain on your tires. They all destroy rubber. Wash only with pure cold water and a little soap.

The Scissors Test Take test strip 1/4 in. by 3 in. Stretch to 9 in. or three times its original length. Cut on the edge with the scissors. The cut should not be more than 1/4 in. across the sample. If the strip tears apart the rubber is inferior.



Strutted, as in the tire, good tubes do not rip when cut. They cut but do not rip. This is the test that proves that the tube he sells will stand the Norwalk test.

The slightest cut in an inferior tube Rip! and the tube is ruined.

## The Test That Tells How to Tell Rubber

THE scissors test shows you plainly that Norwalk Tubes do not rip. The scissors snip is like the edge of a puncture. Norwalk tubes do not rip in your hands, and they will not rip on the road.

The scissors test means that you can demonstrate the superiority of Norwalk Tubes before you buy.

It convinces you of the value of Norwalk floating stock\* Tubes. The tube will convince you that you need the Norwalk cord or fabric casing with the snow white sidewalls and the black tread.

If your local dealer cannot supply you write to

Autoparts Supply Co. Portland, Oregon  
Autoparts Supply Co. 812 E. Pike St., Seattle, Wash. Distributors

### NORWALK TIRE & RUBBER COMPANY

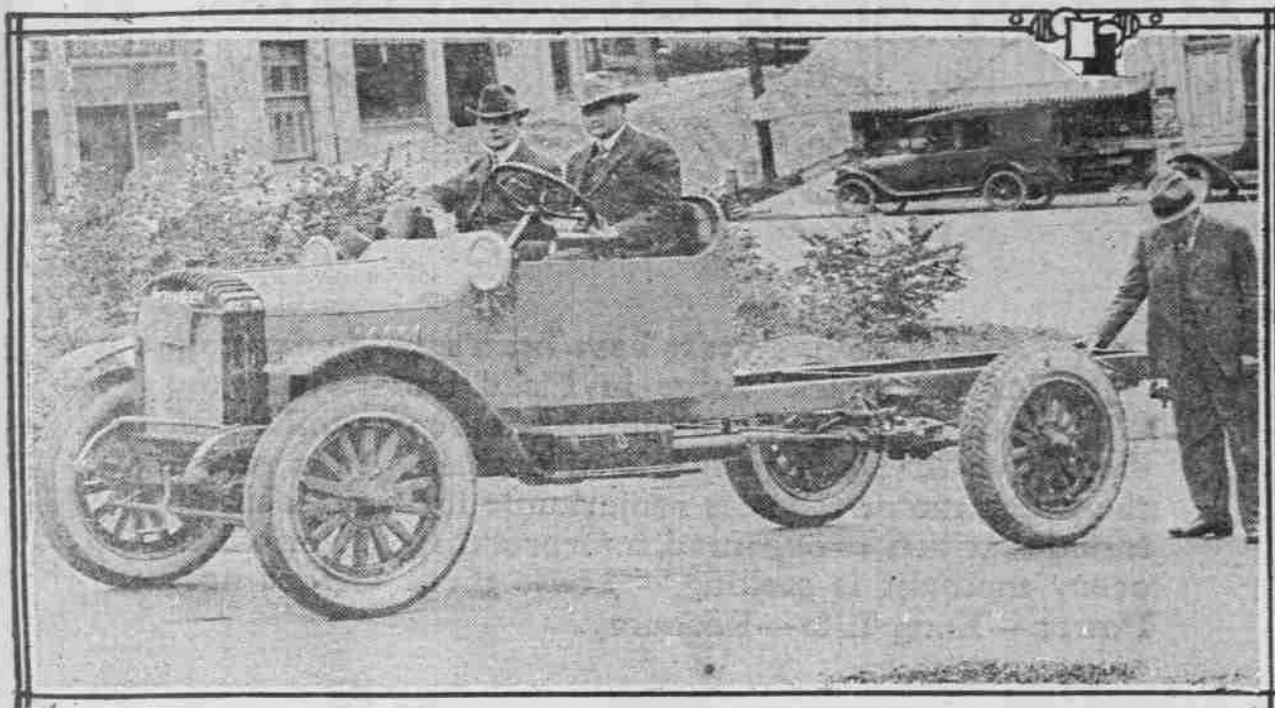
Makers of Casings, Cord and Fabric; and of Tubes, Red and Gray, Norwalk, Connecticut

\*Floating stock is a definite standard of quality. It is rubber so pure that it floats. To the rubber industry it means what 24K gold means to the jeweler. To you it means mileage. File away a dated sample of Norwalk Tube and others and compare them at the end of a year. You are going to learn a lot more about Norwalk quality. But don't wait. Start saving your mileage money now. Ask us for a sample of Norwalk Rubber.



## NORWALK TUBES and CASINGS

#### BETHELEM TRUCK WITH ALL-PNEUMATIC TIRE EQUIPMENT.



#### MILLER CORD TIRES ON THIS 1 1/2-TON POWER WAGON.

Pneumatic tires have increased truck efficiency so greatly that more and more owners are insisting on them. This 1 1/2-ton Bethlehem truck, sold by the Northwest Auto company to a purchaser in Yakima, Wash., is a repeat order, the first one having been sold there a few weeks ago. This truck has 35x5 Miller truck cord tires in front and 35x6 in the rear. Clyde L. Jones is at the wheel and Ed Howe, truck salesman, is beside him. Charles Young, advertising manager for the Northwest Auto company, is the third man in the picture.

and arrived in Astoria at 8:15. Not only that, but the car was stopped a couple of times to adjust a valve and to fill up with gasoline.

An 1 1/2 to 4 hours is considered good time for this run. It will be seen that Kilton hummed right along every moment of the trip. A. F. Wirkkala, who lives at Nasah, Wash., across the bay from Astoria, accompanied Mr. Kilton to take delivery of the car at Astoria.

The speedometer registered exactly 107 miles on arrival at Astoria, so the speed averaged a little better than 25 miles an hour. Kilton maintains that the trip can be made in 2 1/2 hours with a super-six and that he will post a bet that he can make it in that time, provided speed cops along the route will look the other way when he passes.

When the pavement is completed along the stretch between St. Helens and Coble, even this time may be materially cut down. Road gangs are now laying crushed rock along a stretch of approximately six miles this side of Astoria and when these two stretches, now rough and choppy, are finished, it will be just a nice morning's drive from Portland to Astoria and Seaside.

The remainder of the distance to Astoria is in first-class condition, Mr. Wilton reports, and is much better than the inland route.

#### PARK FOR AUTO CAMPERS

White Salmon's Experience Cited for Hood River.

HOOD RIVER, Or., May 31.—(Special).—C. C. Hutchins, secretary of the White Salmon Commercial club and one of those instrumental in obtaining a well-equipped automobile park there, while here this week strongly advised Hood River citizens to hasten to establish a convenient camping park for motorists.

"Place your park well in toward your

viewers. Frank L. Armstrong and Cal M. Young was filed with the county court yesterday and action will be taken within a few days. These viewers also recommended that the road in approaching the Cogswell hill be changed so that a sharp curve may be avoided and so that it will pass through the old Cogswell ranch westerly to a point half a mile from the hill.

#### WOBBLY WHEELS HURT TIRES

Loose Lugs on Rims Often Cause of Rocking Motion.

Lack of attention to the way the rear wheels are running is a source of subsequent financial loss to automobilists. It seems that nowadays there are more cars with wobbly rear wheels than ever before. This may be because the demountable rim lugs are not fully clinched up so that the wheels run evenly. It all makes for wear on tires and shortens their life. From the back it gives the car, as it moves away, a sort of pacing gait. The front wheels are running in one line and the rear wheels are running in another. This rocking motion jars the daylight out of the passengers.

#### NEW YORK AFTER HEADLIGHTS

Laws Against Glare to Be Enforced Strictly in That State.

There will be strict enforcement of the no-glare headlight law in New York state this year. State troopers have received orders to patrol the highways at night to enforce headlight laws, while in the cities police officers will tend to the enforcement. Lists containing the names of 51 lenses and devices approved by the state bureau have been sent to police chiefs, justices of the peace and other officials in the state. These show just what lenses are legal and give angles at which lights must be tilted when this is necessary.

building by the rigid inspection-systems of big tire manufacturing companies.

One of the advantages that the big manufacturer has over the small one is the greater thoroughness with which he can afford to inspect his product in its different stages of manufacture.

In the larger factories, where thousands of tires are built daily, the work of an inspector covers but one single operation of the many involved in tire building.

Just how extensive an inspection department one of the great tire manufacturing companies maintains to insure uniform quality in its product and universal satisfaction among its customers, is indicated in the statement of a factory executive of the Goodyear Tire & Rubber company, Akron, O., that more than 1200 men are employed in the Goodyear plant, simply to inspect product and see that in every advance from one operation to another, none but perfect materials and workmanship enter into its make-up.

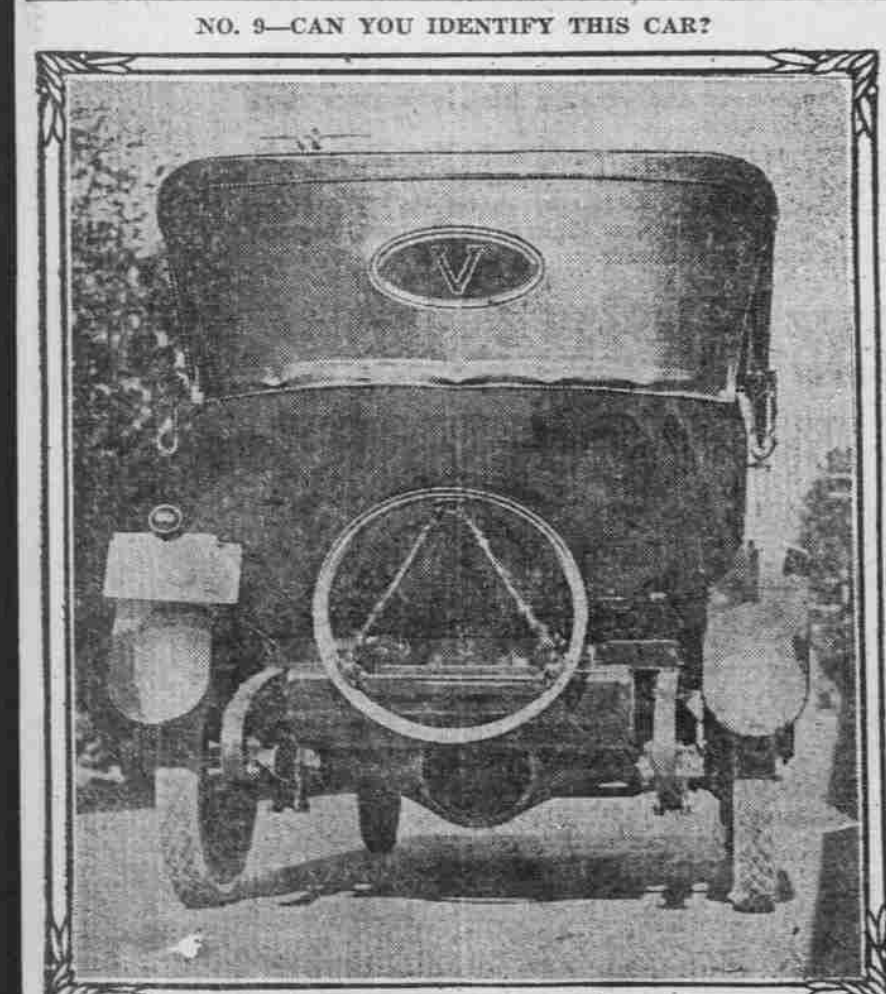
#### Inspectors Even at Plantations.

"This rigid system of inspection really begins long before the materials arrive at our factory," he says. "We have our men in the remote corners of the world, who buy up what rubber we do not raise on our Far Eastern plantations, and who insist that only the best grades of rubber be shipped overseas to our factory. And in the manufacture of our tire fabric in our own mills, from cotton which we raise on our big plantations in Arizona, we insist that our inspectors reject every piece of cloth that is not absolutely perfect.

"Our fabric-making machinery is so delicately arranged that even in the seemingly unimportant operation of rolling twisted strands of cotton on big spools, the breaking of a single thread automatically stops the machinery, permitting the operator to detect the difficulty at once.

"The different stages of preparation through which tire-building materials pass are all thoroughly watched. The washing of the rubber, the mixing of the chemical ingredients that must become a part of the rubber compound to insure perfect vulcanization, the 'working up' of the rubber stock, the frictioning of the tire fabric, the construction of the bead—all these are mercifully inspected to insure the entrance of none but perfect materials.

"Then as the tire is built up by the tire builder, either by machine or by hand, the inspector is standing by to see that each successive operation is perfectly accomplished. Even after the



IT OUGHT TO BE EASY, FOR IT HAS SOME IDENTIFICATION MARKS ALL ITS OWN.

Have you been trying your skill at identifying the rear-end pictures of cars run in The Oregonian's automobile section? It's good practice and may come in handy some time when you want to know just what car is ahead of you. Next time you take a trip, see how many of the cars you can identify from the rear. Members of the police traffic squads in many big cities are required to be able to name a car instantly from just one glimpse, front, side or rear. The car shown here today was a Studebaker Light Six.



For Sale and Installed by **Sunset Electric Co.** Automobile Electric Equipment Agents

Representing **USL Batteries** ELECTRIC AUTO LITE CORPORATION REMY ELECTRIC CO. SPLITTORF ELECTRIC CO. ATWATER-KENT MFG. CO. GABRIEL SNUBBERS BLUR MOTOR APPLIANCES WALTHAM SPEEDOMETERS SPARTAN HORNS

Eighth and Davis Broadway 126

# Ford

### The Universal Car

Out of the more than 3,000,000 Ford cars now in use, about sixty per cent have been sold to farmers. Probably no other one thing has brought to the farm so much of comfort and profit as has the Ford car. It has enlarged the social life, doubled the facilities for marketing, brought the town next door to the farm, multiplied for the farmer the pleasures of living, and by the same token the Ford Touring Car has brought just as much pleasure to the residents of the towns and cities, because it is an every-day-in-the-year utility, answering the demand of quick transportation at low expense. A family car without an equal in low cost of operation and maintenance. We solicit your order for one. We have the full line of Ford cars. We carry the genuine Ford Parts, and assure you the best of mechanical service and the most reasonable prices.

- FRANCIS MOTOR CAR CO. E. 13th and Hawthorne
- WM. L. HUGHSON CO. Broadway and Davis
- PALACE GARAGE CO. 12th at Stark
- ROBINSON-SMITH CO. 6th and Madison
- RUSHLIGHT & PENNEY E. 3d and Broadway
- TALBOT & CASEY E. Ankeny and Grand