

PORTLAND AD CLUB MEN PROMINENT IN PREPARATIONS FOR COMING PACIFIC COAST CONVENTION.

ADVERTISING PREPARING FOR ENTERTAINMENT

All Visitors to June Convention to Have Good Time.

SPECIAL PLANS ARE MADE

Gathering to Be Marked by More Festivities and Hard Work Than Any Former Meet.

Between 1000 and 1500 delegates and visitors from different cities on the Pacific coast will come to Portland to attend the sixteenth annual convention of the Pacific Coast Advertising Men's association to be held here June 8, 9, 10 and 11.

The activities of the convention this year will all center around the general theme of reconstruction work and it will be the purpose of the assemblage to discuss and work out a vigorous, comprehensive and practical programme through which all the ad clubs on the Pacific slope will be enabled to join in a concerted and effective effort to

For the thorough consideration of these important problems specialists and eminent speakers from many different cities have been invited to attend the convention, and an attractive programme, which will deal with the construction matters from all angles has been arranged.

To enliven the spirit of rivalry among the various delegations, an attractive array of trophies have been hung up. There will be upward of 20 beautiful silver cups and trophies to be awarded in contests at general sessions and in the departmentals, with a solid silver classic, costing \$150, which will be awarded to the city winning it two years in succession by making the best ten-minute talk on "Why Industries Should Locate on the Pacific Coast."

Many Speakers Invited. For the thorough consideration of these important problems specialists and eminent speakers from many different cities have been invited to attend the convention, and an attractive programme, which will deal with the construction matters from all angles has been arranged.

Beginning with a number of unique reception features, an elaborate breakfast at the Automobile club on Sunday, June 8, and concluding with a grand ball to close the four-day session, there will be numerous luncheons, teas, dinners and banquets, an early morning drive over the Columbia River highway, and a breakfast picnic in the forest at Eagle creek on long tables under the trees.

Personal Interest Feature. Mr. McCrillis has a big force of busy committees assigned to receive the delegates at the automobile club on Sunday morning, and while the visitors are being cared for and served breakfast in the club, their cars will be washed and put into shape by a big force of men, so that they will be ready for the refreshed visitors to drive on to Portland for the opening event of the programme, a big inspirational meeting at the auditorium.

Cars to Parade In. Mr. McCrillis and his committee are making preparations to receive their delegates at the automobile club on Sunday morning, and while the visitors are being cared for and served breakfast in the club, their cars will be washed and put into shape by a big force of men, so that they will be ready for the refreshed visitors to drive on to Portland for the opening event of the programme, a big inspirational meeting at the auditorium.

Who's Who in Charge. The following are the entertainment bureau committees: Frank McCrillis, director-general; Alfred Fred T. Hyslop, E. D. Strong, John C. Boyer and Ed. H. Higgins.

Reception Committees. Spokane—Fred Spear, chairman; F. E. Krane, C. W. Lovelock, W. W. Sisson, J. J. Shearer, C. W. Rogers, W. R. Sims, W. J. Whiteley, C. O. Wilkins.

Seattle—George F. Beebe, chairman; A. C. Callan, Frank Case, A. L. Finley, W. B. Shively, Fred Johnson, John Annand, Tacoma—E. J. Jagger, chairman; N. Weinbaum, A. T. Gephart, A. G. Ramsey, A. J. Starnes.

Portland—Alfred A. Arys, chairman; H. A. Woodrum, W. H. Harrison, J. H. Mitchell, O. H. Shoshinski, E. C. M. E. in Richmond, chairman; H. R. Lipschutz, James H. Nixon, R. W. Woods, E. H. Knight.

Oakland—F. W. Chausse, chairman; C. W. Burdick, J. W. Marcus, H. H. Hayes, James I. Loder, W. H. Harrison, chairman; Leo Harstien, George C. Hasdoun, R. J. Baldwin, Max H. Smith.

San Diego—E. J. Jagger, chairman; A. M. Stolbier, Roy Trine, E. B. Wheat, Emil Strubler.

San Francisco—Thomas L. Emerk, chairman; J. A. Halliday, W. D. McWaters, B. S. Baucus, F. J. Hyslop, chairman; John F. Beaumont, G. C. Joyce, chairman; J. J. Ball, John C. Boyer, chairman; G. W. Dean, Miles Strindberg.

Portland People at White Salmon. The following guests recently registered at the Evers, White Salmon: Miss Emma Reynolds, Mrs. Harrison Allen and party of Portland, Bishop Page and wife of Spokane, Madame Page of Winchester, Mass.



1—W. J. Hofmann, director-general of convention. 2—Todd Hansen, chairman hotel committee. 3—Charles Hatfield, chairman of newspaper co-operation committee. 4—C. F. Berg, president Pacific Coast Ad Men's association. 5—M. E. Smezer, chairman of automobile committee. 6—J. L. Edgeridge, chairman of finance committee. 7—W. P. Strandberg, chairman of programme committee. 8—W. S. Kirkpatrick, chairman of attendance committee. 9—S. B. Vincent, chairman of publicity and badge committee. 10—Marshall Dana, chairman of executive committee. 11—A. J. Robinson, chairman of trophy committee. 12—Aron Frank, chairman of decoration committee. 13—Charles W. English, chairman of advertising committee. 14—Florence Prevost, chairman of women's committee. 15—Frank McCrillis, chairman of entertainment committee.

HOW WILL WORLD BE FED?

Association for Advancement of Science to Discuss Problem.

PASADENA, Cal., May 31.—With food prices soaring, how will the world be fed when wars end and science stifles plagues, epidemics and disease and the population grows from its present 1,475,000,000 to billions? Herbert C. Hoover is busy now making the world food supply stretch around, but food for the future billion will be discussed here June 19 to 22, when about 400 world-renowned scientists will gather.

This is but one of the problems to be discussed by the members of the Pacific division for the American Association for the Advancement of Science, in session here then. Their answer to the food question will be "Go to sea." They will have a projected exploration of the north Pacific ocean, from whence may come, they believe, more food than the world has ever before heard of.

Speaker of this, one of the scientists arranging the programme said: "Very little is known of the resources of the Pacific ocean or of any ocean, for that matter. When it is stated that the organic productivity of the ocean very probably exceeds that of the land, the significance of scientific exploration in this field becomes apparent.

"In the vision of the scientist, the ocean, that great source of life in its plans to eat, prove to be our main reliance for food and sustenance.

When the population of the world, freed by science from the ravages of disease and wars, shall continue to increase even more rapidly than it has hitherto, and the limitations of agriculture have been reached, we may yet find in mother ocean the final impulse that will carry civilization on to its goal.

"This subject is of vital interest to the peoples of the Pacific area, and it is the purpose of the symposium in a symposium under eight headings or topics. Specialists qualified by experience will present the problems involved and the advantages to be gained through investigations in their respective fields."

The membership of the association's Pacific division, comprising 1400, includes in addition to noted scientists, men of affairs, manufacturers, agriculturists, orchardists and many from other walks of life.

HOOD GIRLS INDUSTRIOUS

Myrtle and Esther Husbands Earn Way Through College.

HOOD RIVER, Or., May 31.—(Special.)—Myrtle and Esther Husbands, daughters of Mr. and Mrs. R. H. Husbands of this city, and graduates of the Hood River High school, who will graduate in June at the Oregon Agricultural college, have worked their way through the college. Both have made remarkable records.

Myrtle Husbands was a member of the faculty in the commercial department of the college. She was in charge of the commercial department at the Union High school the coming year. She will also be assistant instructor in the department of physical education. During her junior year Miss Esther Husbands had charge of the stock room at the home economics building. She expects to enter institutional management work.

Portland People at White Salmon.

The following guests recently registered at the Evers, White Salmon: Miss Emma Reynolds, Mrs. Harrison Allen and party of Portland, Bishop Page and wife of Spokane, Madame Page of Winchester, Mass.

LIST OF POLLING PLACES GIVEN FOR THE SPECIAL ELECTION TO BE HELD NEXT TUESDAY

FOLLOWING is a list of polling places for the special election to be held next Tuesday:

- 1—Garage, Thurman st. bet. 2nd and Ruby. 2—Terrace Grocery, 28th and Thurman sts. 3—N. W. cor. 23rd and Taylor sts. 4—800 Thurman st. 5—7-73 Vaughn st. near 22d st. 6—7-73 Vaughn st. near 22d st. 7—847 Wilson, bet. 21st and 22d sts. 8—424 Thurman st. near 21st st. 9—8-340 N. 16th st. cor. Raleigh st. 10—2000 Commercial, bet. 19th and Broadway. 11—1118 Northrup st. cor. 19th st. 12—12th Church st. cor. 17th and Marshall. 13—204 N. 21st st. cor. Northrup st. 14—Garage, 698 Overton st. bet. 20th and Alder sts. 15—Hill academy, 521 Marshall st. 16—Engine house, 54th and Johnson sts. 17—Factory Motor Car Co., Kearney st. bet. 18th and 22d sts. 18—113 N. 24d st. bet. Hoyt and Irving sts. 19—Garage, E. cor. 24d and Irving sts. 20—Basement apt. 21st and Flanders sts. 21—168 N. 21st st. bet. Johnson and Irving. 22—688 Commercial, bet. 19th and Broadway. 23—Old Couch school, 17th and Kearney sts. 24—Garage, N. E. cor. 16th and Irving sts. 25—Basement apt. 21st and Flanders sts. 26—Engine house, 511 Gilliam st. 27—Basement apt. 21st and Flanders. 28—27 N. 1st st. bet. Burnside and Couch. 29—Hunt Transfer office, 45 N. 5th st. bet. Couch and Davis sts. 30—W. L. Hughes Co., Broadway and Davis. 31—32 N. 11th st. bet. Couch and Burnside. 32—Speedwell Motor Co., S. W. cor. 14th and Alder sts. 33—775 Washington st. bet. 17th and 18th. 34—414 1/2 St. bet. Washington and Everett. 35—414 1/2 St. bet. Washington and Everett. 36—Velle Motor Co., 55 N. 23d st. 37—400 Burnside st. bet. 11th and 12th sts. 38—Hood River school, bet. Washington and Burnside sts. 39—251 1/2 Stark st. between W. Park and Alder. 40—39-204 Pine st. bet. 8th and 9th sts. 41—414 1/2 St. bet. Washington and Everett. 42—414 1/2 St. bet. Washington and Everett. 43—414 1/2 St. bet. Washington and Everett. 44—118 1/2 St. bet. Washington and Everett. 45—414 1/2 St. bet. Washington and Everett. 46—414 1/2 St. bet. Washington and Everett. 47—414 1/2 St. bet. Washington and Everett. 48—414 1/2 St. bet. Washington and Everett. 49—414 1/2 St. bet. Washington and Everett. 50—414 1/2 St. bet. Washington and Everett. 51—414 1/2 St. bet. Washington and Everett. 52—414 1/2 St. bet. Washington and Everett. 53—414 1/2 St. bet. Washington and Everett. 54—414 1/2 St. bet. Washington and Everett. 55—414 1/2 St. bet. Washington and Everett. 56—414 1/2 St. bet. Washington and Everett. 57—414 1/2 St. bet. Washington and Everett. 58—414 1/2 St. bet. Washington and Everett. 59—414 1/2 St. bet. Washington and Everett. 60—414 1/2 St. bet. Washington and Everett.

Once Gray-Haired, Not Always So!

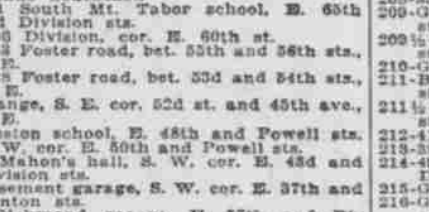
When war broke out Captain John MacGregor, M. C. D. C. M. Canadian mounted rifles, who has received the Victoria cross, snowed over 100 miles to join the colors.



When war broke out Captain John MacGregor, M. C. D. C. M. Canadian mounted rifles, who has received the Victoria cross, snowed over 100 miles to join the colors.

Gives Wife Adler-i-ka

"My wife was pronounced incurable by physicians (unless operated) complicated bowel trouble. I began giving her Adler-i-ka and she is improving and I mean to continue until she is cured." (Signed) J. H. Underwood, Mar. 1918.



Adler-i-ka expels ALL gas and sourness, stopping stomach distress IN STANTLY. Empties BOTH upper and lower bowel, flushing ENTIRE alimentary canal. REMOVES ALL foul matter which poisons system. Often CURES constipation. Prevents appendicitis. We have sold Adler-i-ka many years. It is a mixture of buckthorn, cascara, glycerine and nine other simple drugs. Kidneys, Drug company and leading druggists—Adv.

- 175—Garage, E. 28th st. bet. E. Main and Division sts. 176—Garage, S. E. cor. E. Salmon st. and Glenn ave. 177—201 E. 21st st. cor. E. Madison. 178—Engine house, E. 24th and Belmont sts. 179—1172 Belmont st. bet. E. 33d and E. 34th sts. 180—Garage, 1036 E. Washington st. cor. E. 30th st. 181—Garage, 98th st. cor. Belmont st. 182—Frank Garage, 1238 Belmont st. bet. E. 42d and 43d sts. 183—N. W. cor. E. 40th st. 184—1339 Hawthorne ave. bet. E. 48th and Division sts. 185—1210 Belmont st. cor. E. 46th st. 186—N. W. cor. E. 40th and Powell sts. 187—E. 82d st. 188—784 Belmont st. cor. E. 61st st. 189—1080 E. Stark st. bet. E. 74th and E. 75th sts. 190—2020 E. Stark st. 191—Garage, Stark st. near E. 74th st. 192—J. O. P. Hall, E. 80th and E. Gilliam sts. 193—1918 E. Gilliam st. cor. 76th st. 194—200 E. 80th st. cor. E. Hoyt st. 195—2001 E. Gilliam st. near E. 80th st. 196—2001 E. Gilliam st. near E. 80th st. 197—Garage, N. W. cor. E. 80th and Schuyler. 198—N. E. office, Sandy Blvd. bet. E. 72d and E. 73d sts. 199—N. E. office, Sandy Blvd. bet. E. 72d and E. 73d sts. 200—Garage, S. E. cor. E. 84th and E. Ankeny. 201—Garage, 885 E. 84th st. N. bet. Skidmore and Klondike. 202—Twohy Bros., 219 E. 80th st. 203—N. W. cor. E. 80th and E. 81st sts. 204—854 E. Gilliam st. cor. E. 80th st. 205—Garage, S. E. cor. E. 80th and E. 81st. 206—Garage, N. W. cor. E. 23d and E. Ankeny. 207—Garage, S. E. cor. E. 16th and E. Ankeny. 208—Garage, 574 E. Couch st. cor. E. 14th st. 209—Garage, 80 E. 12th st. cor. E. Everett st. 210—Garage, E. 12th and E. Burnside. 211—Garage, 13 E. 12th st. near E. Ankeny. 212—14 E. Burnside st. near E. 6th st. 213—Garage, 608 Clackamas st. bet. E. 24th and E. 25th. 214—4 E. Burnside st. bet. E. 6th and E. 7th. 215—Garage, 715 Multnomah st. cor. E. 12th. 216—Garage, S. W. cor. E. 10th and Hassalo. 217—Engine house, Grand ave. and Multnomah. 218—Garage, 1017 Clinton st. bet. E. 84th and Greenwood avs. 219—Garage, bet. E. 26th and 26th st. 220—715 Clinton st. cor. E. 21st st. 221—343 Powell st. near Milwaukee st. 222—824 Milwaukee st. cor. E. Blumark st. 223—715 Milwaukee st. cor. Blumark st. 224—Frederick school, bet. Milwaukee and Frederick sts. 225—Milwaukee st. bet. Brooklyn st. and Woodstock. 226—Northwest cor. E. 8th and E. Grant sts. 227—Garage, E. W. cor. E. 47th and E. Lawrence. 228—E. Clay st. bet. Grand and Union. 229—477 1/2 Hawthorne ave. near E. 8th st. 230—Church, E. 10th and Poplar sts. 231—Garage, Mulberry st. bet. E. 8th and E. 9th. 232—West Park st. 233—1717 Division st. bet. E. 33d and Greenwood avs. 234—930 Hawthorne ave. cor. E. 31st st. 235—Garage, 297 E. 14th st. near Hawthorne. 236—1074 Hawthorne ave. bet. E. 24th and E. 25th. 237—Garage, 1948 E. Lincoln st. near Marquette. 238—N. W. cor. E. 41st and Division sts. 239—Garage, S. W. cor. E. 57th and E. 58th. 240—1224 1/2 Hawthorne ave. near E. 43d st. 241—Garage, E. W. cor. E. 47th and E. Lawrence. 242—Garage, 20th st. bet. Stephens and E. Mill st. 243—N. W. cor. E. 32d and E. Lincoln. 244—Garage, 316 E. 37th st. bet. Hawthorne and Belmont. 245—N. W. cor. Grand ave. and Hawthorne. 246—139 Grand ave. cor. Belmont st. 247—108 E. 18th st. near Grand ave. 248—20 Grand ave. cor. E. 17th st. 249—Francis hall, E. 11th and Pine sts. 250—Church, E. 20th and E. 21st. 251—Francis hall, E. 11th and E. Alder. 252—Garage, E. 13th st. and Hawthorne. 253—Garage, E. 13th st. and Hawthorne. 254—Garage, 641 E. Madison st. cor. E. 17th. 255—Garage, E. 14th st. bet. E. Morrison and Belmont. 256—Washington high school, E. 14th and E. 15th. 257—Garage, E. 20th and E. Morrison. 258—Garage, E. 20th and E. Morrison. 259—Garage, E. 20th and E. Morrison. 260—Garage, E. 20th and E. Morrison. 261—Garage, E. 20th and E. Morrison. 262—Garage, E. 20th and E. Morrison. 263—Garage, E. 20th and E. Morrison. 264—Garage, E. 20th and E. Morrison. 265—Garage, E. 20th and E. Morrison. 266—Garage, E. 20th and E. Morrison. 267—Garage, E. 20th and E. Morrison. 268—Garage, E. 20th and E. Morrison. 269—Garage, E. 20th and E. Morrison. 270—Garage, E. 20th and E. Morrison.