

MOTOR CAR EXPORTS SHOW BIG INCREASE

Truck Shipments Grow Rapidly During World War.

SEVENTY-FIVE NATIONS BUY

Foreign Sales of Freight Vehicles Is Expected to Decrease, but Passenger Orders to Climb.

Great changes are to be expected in the exportation of automobiles and motor trucks now that the war has ended, just as the war itself changed the whole complexion of our export trade.

During the war the yearly exports of passenger automobiles more than doubled over the pre-war annual exports, due in large part to the inability of European manufacturers to supply cars for export trade.

A report of motor vehicle exports to all countries during the calendar year 1918, just furnished to the national automobile chamber of commerce by the bureau of foreign and domestic commerce, shows that 10,393 trucks valued at \$25,814,952 and 36,936 passenger automobiles valued at \$36,471,272 were shipped abroad last year.

Analysis of the exports in 1918 as compared with 1914 shows that while the exports of passenger cars to England, France, Germany, Russia and British South Africa decreased notably and increased only slightly in Australia, they doubled to Canada, increased 25 fold to Japan, 13 fold to Mexico, nearly nine fold to Chile and Spain, six fold to Cuba and China, more than seven fold to Uruguay, more than quadrupled to the Dutch East Indies and almost doubled to Argentina.

Of the truck exports last year, on the other hand, more than half of the 10,393 went to England and France alone, while in 1914 less than one-third of the 784 shipped abroad went to these two. There was hardly any country in the world that did not take more American trucks last year than four years ago.

If you have detached wheels, remember that the metal parts may rust occasionally. When you change a wheel, cover the metal contact surfaces with grease; otherwise the detachable wheel will no longer be detachable.

EXPORTS OF PASSENGER AUTOMOBILES IN 1914 AND 1918

Table with columns: Country, No., Value, No., Value. Lists countries like Canada, Australia, Japan, Mexico, Chile, Cuba, etc.

EXPORTS OF MOTOR TRUCKS IN 1914 AND 1918

Table with columns: Country, No., Value, No., Value. Lists countries like France, England, Canada, Japan, Cuba, etc.

PENDLETON SHOW PLEASURES

PORTLAND AUTOMOBILE MEN PRAISE MOTOR EXHIBIT.

Chevrolet, Velle and Buick Representatives of This City Enjoy Display.

Among the Portland automobile men in attendance at the round-up automobile show in Pendleton the last three days of last week were Roy Stuart, Oregon state factory representative for the Chevrolet Motor company; W. F. Stine, D. C. Warren Motor Car company and also interested in the Eastern Oregon Motor company of Pendleton; George W. Dean, manager of the Howard Auto company, distributors of the Buick, and C. J. Therkill, also of the Howard Auto company. The Portland visitors united in praising the exhibition.

The Eastern Oregon Motor company is a new firm in Pendleton which exhibited the Velle and Chevrolet at the eastern Oregon show. The name used by the company when its organization was first announced was the Round-up Motor company, but the stockholders decided to make a change.

Business for the new firm has started off with a rush, according to Mr. Stine, and prospects are bright for its continuance during the next few months.

Several other Portland dealers took in the show, a number also visiting the exhibition in Seattle which closed last night.

New Car Owners in County.

Temporary police licenses were issued in Portland last week to the following buyers of latest model motor cars by the company when its organization was first announced was the Round-up Motor company, but the stockholders decided to make a change.

Several other Portland dealers took in the show, a number also visiting the exhibition in Seattle which closed last night.

SEATTLE MEN DRIVE CHANDLER DISPATCH TO PORTLAND TO SEE SHOW.



H. J. Meyer, retail department, and A. W. Wonder, wholesale department, Seattle Automobile company, negotiate some tough roads without a bit of trouble. They came down to see the show and compare notes with the Vela Trucks Motor Car company, Oregon Chandler distributors.

LARGE ORDER PLACED BY MANLEY COMPANY

Contracts for Hubmobiles and Grants Exceed \$900,000.

HABEL RETURNS FROM EAST

Sales Manager Finds Detroit and Cleveland Plants Increasing Output to Fill Heavy Demand.

Contracts for more than \$900,000 worth of Hubmobiles and Grant automobiles were signed for the Manley Auto company, distributors for the cars in Oregon and the Columbia river counties of Washington by E. C. Habel, sales manager of the company, on his recent visit to the factories at Cleveland and Detroit.

Conditions were just the same at the Grant Motor Car corporation's plant in Cleveland, Mr. Habel said. This company also is making strenuous efforts to increase production. One new building is now under construction. The entire roof will be of glass to insure the best working conditions. More than 600 men will be employed in this structure.

Expert mechanics, who were in the service and in other industries during the war, are returning to both factories and are proving a big factor in bringing about increased production, according to the Manley Auto company man. Both companies have adopted the policy of taking all their former employees back to work.

SOLDIERS GET POSITIONS

JOB-SEEKERS AIDED BY OVERLAND COMPANY.

Portland Boy With American Army in France Promised Place by Portland Company.

A letter from Bob Sprague, formerly with the Willys-Overland Pacific company here, and later with the Overland company's distributors at Hillsboro, arrived for the Overland company here from France under date of February 17 last week, asking if his old job was waiting for him.

An elaborate plan has been worked out whereby the Overland factory at Toledo is assisting returning service men who were formerly in the employ of the company at the plant or in any of its branches or distributing centers.

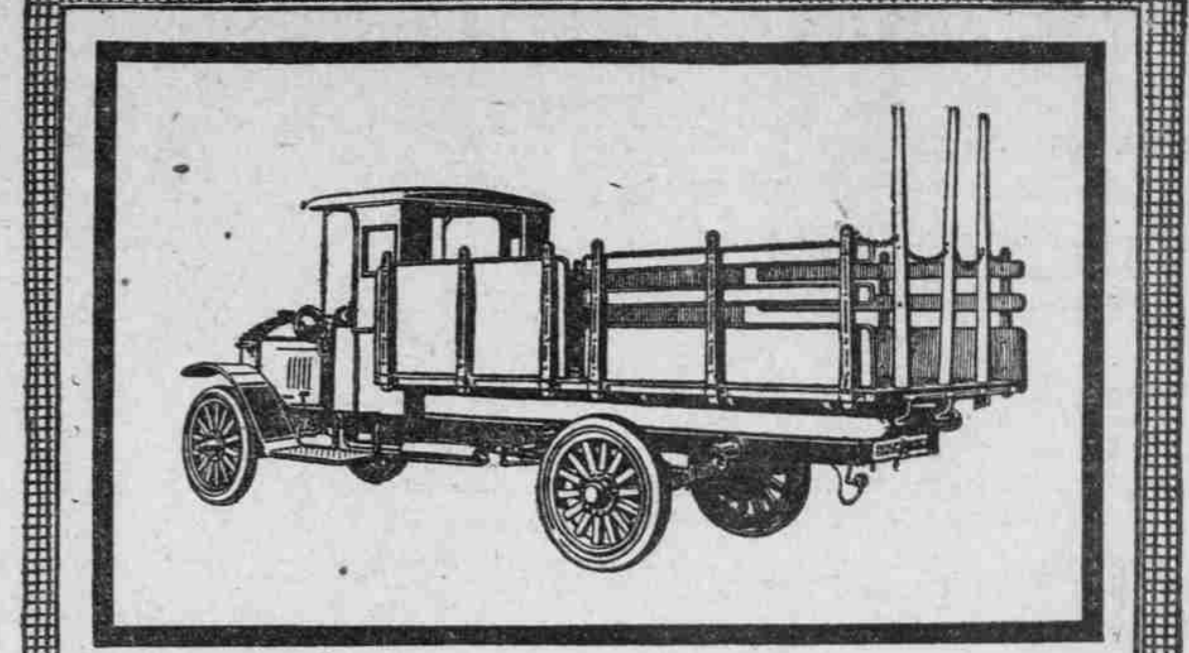
RACE WILL MARK COMEBACK

Sporting Public Wonders if Rickenbacher Will Enter at Indianapolis.

The vitality of the motor car industry and its ability to assimilate punishment and come back smiling has never been more strikingly demonstrated than by the interest which race drivers and manufacturers alike, are manifesting in the 300-mile international sweepstakes to be held on the Indianapolis motor speedway May 31.

Among all industries the automobile

Local Fact



See This Bethlehem Service Test Any Day

It's a service that probably passes your door every day or week—rain or shine—hot or cold.

Watch for this Bethlehem Truck as it passes—it may be heavily loaded or not. You will notice it keeps on going, fulfilling the hauling needs of the concern it serves—dependable, economical, efficient.

Bethlehem Trucks meet the test of daily tasks in tonnage, mileage, and uninterrupted service.

They will fit your plans of business expansion.

Gray & Davis Electric Starting and Lighting—Chrome Nickel Steel Construction—Internal Gear Drive.

Bethlehem is every ounce an asset—every minute a doer—every mile a money-saver.

To see a Bethlehem is to admire it.

1 1/2 Ton Chassis \$1965, 2 1/2 Ton Chassis \$2365, 3 1/2 Ton Chassis \$3465. Northwest Auto Co. Alder at 18th.

BETHLEHEM Internal Gear Drive MOTOR TRUCKS Dependable Delivery. BETHLEHEM MOTORS CORP'N. ALLENTOWN, PA. The Motor Truck bought to-day without Electric Starting and Lighting will be out of date tomorrow.

Industry was hardest hit by the war. Not only was the industry denied the privilege of keeping up even a small production—its man power was depleted almost completely and its factories commandeered down to the last lathe and drill press. All of which was agreeable to the automobile industry—for no one can question the wholehearted devotion and patriotism of the men of motordom as revealed under fire.

Another FEDERAL and Other Service. 1 to 5 Tons. Judging from the hundreds of owners of other trucks who call at our Federal parts department for service, anyone would conclude that Federal parts fit all of the motor trucks on the market.

WHY EXPERIMENT? When You Buy a Battery Take No Chances—Buy an EXIDE BATTERY. They Cost More and Are Worth It. THE STORAGE BATTERY CO. 348-350 Couch St. Geo. R. Herd, Mgr. Phone Bdwy. 3043. WILLIAM L. HUGHSON CO. 60 N. Broadway at Davis St. Phone Bdwy. 321. Branches at San Francisco, Oakland, Los Angeles, San Diego, Fresno, Seattle, Portland.