

SPECIAL OFFER—SHOES DYED BLACK, 50c, LACES FREE; SATIN SLIPPERS DYED, 50c; SHOES DYED BRONZE, 65c, LACES FREE—BASEMENT

The New Suitings For Garments at \$5

—Gabardines, satin prunella, broadcloth and men's wear serges for suits, coats and capes, all priced \$5.00. New shades—tan, sand, gray, peacock, Copen, navy, brown, blue and black.
Second Floor—Lipman, Wolfe & Co.

Lipman Wolfe & Co.

Merchandise of Merit Only

Lovely New Waistcoats of Tricolette Just In!

—No vogue has ever "caught on" quite so completely as this vogue for waistcoats, and, naturally, Lipman, Wolfe & Co. have all kinds. The new ones of tricolette are particularly appealing. Plenty of others to see, too.
Street Floor—Lipman, Wolfe & Co.

Monday's Big News--500 New Blouses in a Sale at \$4.95

Fine, Firm Crepe-de-Chines in a Score or More of the Newest Spring Styles—None Shown Before!



Exquisite Model Hats Are Arriving—See Them Monday!

—Just a few words about some that are just now being unpacked in the Receiving Room: lovely exclusive models from the most famous designers in this country. Individuality is the keynote.

—A small orchid colored poke is most artistic, with its marine veiled brim and row of vari-orchid colored flowers about the crown, with just a touch of solid black in a ribbon band.
—A whirl of flying wings around the crown and brim of a brown sailor that is quite small, makes an interesting new note in tailored models. The under brim is Georgette faced. Very lovely.
—A large Jay blue sailor is wonderfully chic with its large bunch of bright blue grapes that hang loose at one side, and its loose folds of blue taffeta around the upper brim.

Special Grouping—New Hats \$7.50

—The cleverest new hats at this moderate price. Small, rough straws that are quite close fitting, some trimmed with foliage, some with wings and some with ribbons.
—Then, there are larger, dressier styles—many with clever trimmings of flowers and fruit and wings—dressy and semi-dressy styles that are so effective.
—All black, black with colors and some in the newest colors are to be found—and they're exceptionally attractive at \$7.50.
Third Floor—Lipman, Wolfe & Co.

Room-Size Wilton Rugs in New Patterns--Special!

—With the price of rugs rising instead of lowering, with Spring home-furnishing days making new floor coverings necessary, this is a most opportune sale—one you cannot afford to miss.

8:3x10:6—\$57.75 9x12—\$59.75

—These are wool Wilton rugs of excellent quality; rugs in the most beautiful designs and color combinations. Patterns that are particularly suitable for living and dining rooms, and are all finished with linen colored fringe.
Fifth Floor—Lipman, Wolfe & Co.

New "Kayser" Underwear for Women

—Folks tell us that this store has better assortments of "Kayser" underwear in all grades than are available anywhere else in town.

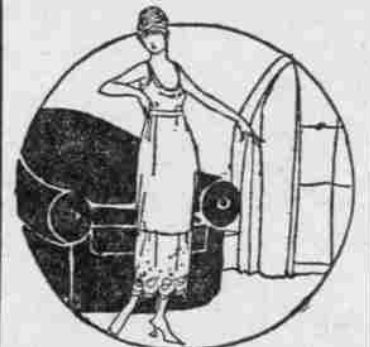
Silk Lisle Union Suits, \$2.50
—Swiss ribbed, medium weight "Kayser" silk lisle. Low neck, sleeveless; band top. Marvel fit.

"Kayser" Silk Lisle Vests, 75c
—Crocheted yokes; variety of patterns; white only. Extra sizes, 85c.

"Kayser" Union Suits, \$1.25
—The popular low neck, sleeveless, knee length styles. Band tops; 36 to 44—\$1.25.
Street Floor—Lipman, Wolfe & Co.

Muslin Wear for Women

—A few of the special offerings that you will find regularly in our Fourth Floor Muslinwear Shops.



New Envelope Chemise All Sizes at \$1.75

—Dainty garments that are made of excellent quality nainsook and trimmed with pretty lace insertion or embroidery edges. Some have ribbon shoulder straps and others have deep lace yokes, built up like corset covers. Sizes 36 to 44.

Dainty New Nainsook Gowns at \$1.95

—Pretty gowns with yokes and short sleeves of lace and some trimmed with embroidery edgings. All cut full and roomy and ribbon drawn.

New Muslin Petticoats Priced \$1.00 to \$1.95

—These are of excellent quality materials and have deep ruffles finished with clusters of tucks and lace or embroidery. Neatly taped at waistline. Regular and extra sizes.

New Boudoir Caps In Dainty Models 65c and 95c

Fourth Floor, Lipman, Wolfe & Co.

—The manufacturer from whom we buy most of our "five dollar and over" blouses has recently shown his appreciation for our trade by sending us these 500 blouses at a very special price concession. Ordinarily these would cost very close to the sale price and naturally sell for very much more. But as he has broken all precedent in sending us these blouses, we are breaking all local precedents in selling them at such a low price.



Sketched from models on sale at \$4.95.

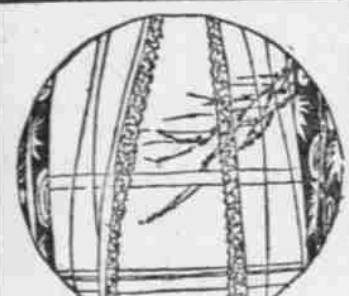
The Saving Is So Unusual That Every One Ought to Be Picked Up Monday

—We can tell you that this is the most extraordinary blouse sale we have held for a long time (and we have held some unusual ones in the past few months), but you will actually have to see, to feel the rich, heavy quality of these blouses to appreciate them fully.

—New tailored models, with high collars that turn back over black tailored ribbon bands. Tailored blouses, with clusters of fine tucks.
—Fancy blouses, with dainty trimming of imitation Venise lace and some with the prettiest bits of embroidery cleverly employed are among them.
—Button trimmed blouses; some with vest-like fronts and rows of buttons for their only trimming, and with pleats and tucks, too.

—These are shown in the most desired shades—pink, white, tea rose, flesh, maize, bisque, gray, navy and black—handsome, heavy crepe de chine blouses of the spring's most favored styles—and qualities that cannot be equaled at much higher prices.
—Come down and see them in our windows—a look will convince you of the superiority of these blouses and the unusual news of this sale. There are all sizes in the group and 500 blouses sound like a lot—but there are so many styles, it is but natural certain styles and sizes will be depleted early.

Third Floor—Lipman, Wolfe & Co.



Sale of New White Curtain Marquisettes 39c

—This all-around curtain material, in a good firm quality, is very specially priced at 39c.

2000 Yds. of New Cretonne and Chintz 39c

—Another item that home-makers should by all means investigate. These popular drapery fabrics are extensive enough in variety to harmonize with almost any interior. Floral and conventional designs.
Fifth Floor, Lipman, Wolfe & Co.

Thousands of Yards of Longcloth and Nainsook Specially Priced

—This event was made possible by having all our longcloth and nainsook woven expressly for us. Every housewife should take advantage of the savings, and anticipate future needs.

- 10 Yards Longcloth, \$2.50**
—Free from dressing. Especially suitable for underwear. 36 inches.
 - 10 Yards Longcloth, \$4.20**
—Our best advice is to buy several bolts of this fine quality. 36 inches.
 - 10 Yards Japanese Nainsook, \$4.25**
—Mercerized finish. This is a very excellent value. Neatly boxed.
 - 12 Yards 45-Inch Nainsook, \$6.00**
—This width cuts to excellent advantage—for children's wear and undergarments.
 - 10 Yards Longcloth, \$3.85**
—The beautiful soft finish so desirable for fine undergarments. 36 inches.
 - 10 Yards Longcloth, \$4.75**
—This quality launders beautifully and gives excellent wear. 36 inches.
 - 10 Yards Johoco Nainsook, \$3.15**
—A soft, silky finish that makes such dainty undergarments. 36 in.
 - 12 Yards Bridal Wreath Nainsook, \$5.50**
—One of the very best qualities on the market. Beautiful finish.
 - 36-Inch Longcloth 20c Yard**
—Specially priced for this sale. Free from dressing.
 - 36-Inch Cambric Nainsook, 35c**
—The cambric finish that so many people prefer. Splendid weight.
- Second Floor—Lipman, Wolfe & Co.

Monday Only Sale of Hair Switches \$7.50

—For one day only you may purchase real hair switches of the very best quality, made on three stems, for the very low price of \$7.50.
Mezzanine Floor, Lipman, Wolfe & Co.



1500 Pieces "Factory Ends" Nippon Hand-Painted Chinaware on Sale

—In view of the fact that our contract for these so-called factory ends expires this spring, we advise that you purchase at this sale, since the opportunity is not likely to present itself again.

15c, 25c, 35c, 45c, 65c, 95c, \$1.45, \$1.95 and \$2.45

- Cups and saucers, mustards, pin trays, small nappies, sugars and creamers, tea strainers, fruits, jelly dishes, plates, powder jars, hair receivers.
- Rose jars, candle sticks, footed compotes, cream bowls, large bowls, cake plates, covered cheese dishes, ice plates, nut bowls, pickle dishes, olive trays.
- Celery dishes, candy or cake baskets, covered jugs, chocolate pots, vases, ice tubs, tea pots, berry bowls, cracker jars, humidors, relish dishes, fern dishes, etc.
- Sixth Floor, Lipman, Wolfe & Co.

All the Season's New Silks

—Personal selection of the silks of latest, high-class manufacture insures comprehensive assortments, utmost beauty of design and coloring, as well as moderation in price.
—Among others the spring showing comprises: Moon Glo satin and crepes that fashion gowns "the" set.
—Satin Francais, that soft, lustrous satin that wears so wonderfully; in the most wanted colors, of course.
—Kumai-Kumai, Dew Kist and Ruff a Nuff—the marvel sort silks of the season in their wondrous variety.
—Printed Pussy Willow in marvelous colorings and designs—showing the new Ninette and Rin Tin Tin patterns.
—A hint of the color variety—henna, victory red, minkado red, Pershing blue, overseas blue, tank gray, orchid, etc.
ALWAYS THE NEW SHADES FIRST
—Second Floor, Lipman, Wolfe & Co.



High Tide Time in the Apparel Shops

—Such an influx of smart, new spring wearables, it's no wonder folks are enthusiastic about our exclusive styles and models. We can give you but a hint here. You will have to come in and try on a few of these innovations to gain an adequate conception of their real charm.

WONDERFUL NEW "PELLARD" SUITS \$75 TO \$175

—The most beautiful "Pellards" we have seen in many a season, these new spring, 1919, models with their charm of the new.
—Exquisite tricolettes, handsome serges, Poiret tails and gabardines, the most favored fabrics for this new spring season.
—Touches of braiding, colorful bits of embroidery on vests and odd combinations of fabric distinguish these suits as altogether "different."
—Black, navy blue, shimmering beige that is almost silver because it is of tricolette, deep rich tones that are difficult to name—all are found here.

HANDSOME NEW DOLMANS AND COATS \$60 TO \$175

—Voluminous coats that wrap about one in the most graceful manner imaginable, and simple straight line coats, always good.
—The materials are rich and soft and ideally adapted to the flowing-line styles—Evora, Bolivia, Silvertone, Bolivia, Duvet de Laine, Wool Velour.
—The colors are exquisite—new tea rose, henna, can-taioupe, clay, deer, mist, taupe, Pekin and, of course, navy, with new browns and black.
—Touches of henna chenille are embroidered on a navy blue coat, shoulder capes, butterfly sleeves with tight wrists, novel buttons—all proclaim "the new."

FROCKS OF SILK AND SERGE \$50 TO \$125

—Such infinite variety in lovely frocks has never before been seen. Frocks for all tastes, frocks for all types, frocks for all occasions.
—Filmy Georgette frocks are heavily embroidered—a henna in black is too lovely for words. A navy blue is embroidered in self-colors.
—A blue serge is embroidered in large squares of chenille and soutache braid and is most effective for afternoon wear. Others are braided.
—White serge promises to come into its own by way of delightful afternoon and street frocks that are simple, yet elaborately embroidered.

Third Floor—Lipman, Wolfe & Co.

"Stylish Stout" Corsets for A Fashionable Silhouette

—The most important feature of a new spring costume is the corset if you would but stop to consider, for it is the real foundation. That is why we recommend "Stylish Stouts" so highly.

—It is a simple matter to reduce your hip, waist and bust line from one to five inches and appear ten pounds lighter with a "Stylish Stout."
—We will gladly fit one to your individual requirements and feel sure that you will be delighted. It will be possible to wear more striking colors, smarter styles and better-looking clothes with one.
Priced \$8.50, \$15.00 and \$20.00
Fourth Floor—Lipman, Wolfe & Co.



One as sketched.

See Page 3, This Section, For Latest Monday News of Our 'Cash Only' Basement Store