

### PROPOSED AUTO TAX STRENGTHEN FROM BILL

#### Gasoline Revenue Measure Is Also Eliminated.

### MANUFACTURERS STILL PAY

#### Disagreement in Senate Finance Committee May Prevent Passage of Any Revenue Measure.

The Senate finance committee has eliminated entirely the proposed Federal license tax on the use of automobiles and motor-cycles, which ranged from \$10 to \$50 annually in the House bill, according to horse-power and from \$5 to \$25 under the plans previously adopted by the Senate committee, according to word just received by the Motorcar Dealers' Association of Oregon from the National Automobile Chamber of Commerce.

Ward has also been received that in its revision of the war revenue bill the Senate finance committee has voted to eliminate the proposed tax on gasoline and also the floor tax on tires, parts and accessories held in stock by the dealers at the time the bill becomes a law.

News of these two changes has been received in Portland with a great deal of satisfaction. The proposed license tax would have to be borne by the car owners, a tax on gasoline would have materially increased the cost of motoring, and a tax on tires, parts and accessories would have put a further burden on the industry.

The bill from which the Federal license tax has been eliminated still maintains a tax of 5 per cent on passenger cars and trucks, to be paid by the manufacturer and also 5 per cent on new parts sold by the manufacturer. It is believed in some quarters that this parts tax may later be eliminated.

There is still a possibility, it is said, that a disagreement will prevent any new revenue bill being agreed upon by the Senate finance committee, in which case the 1917 revenue measure, with its taxes as at present, would continue.

In the Senate finance committee the Democrats are endeavoring to include in the present measure the 1919 tax programme. Should this plan finally be carried out it is believed the Republicans will decline, on a strictly party vote, to pass any new revenue measure.

### CLYDESDALE TRUCK HERE

#### NORTHWEST OAKLAND COMPANY IS DISTRIBUTOR.

#### Entire Output Required in European Service During War Released Now for Dealers.

The latest truck to make its bow in the Pacific Northwest field is the Clydesdale, manufactured at Clyde, Ohio, and which will be distributed in Oregon and Washington by the Northwest Oakland Company. The first shipment, consisting of two, three and a half and five-ton models, has just arrived in Portland. The truck also comes in a 1 1/2-ton model.

In Oregon the truck will be distributed by the Portland branch of the Northwest Oakland Company and in Washington by the Seattle branch of the company.

During the four years that the Clydesdale truck has been manufactured the entire output has been taken by the allied governments for service in the European war zones. Hundreds of sturdy Clydesdales were included in the gigantic truck fleets which did much to help win the war.

Now that the war is over the truck will go on the general market for the first time. The manufacturers are depending upon the record the truck has made in Europe to recommend it to the commercial trade.

The designers and builders of the Clydesdale truck have incorporated many of the best points in the vehicles of the London Omnibus Company, which has been operating for 40 years, says A. H. Brown, manager of the Northwest Oakland Company. "One of the features of the truck is the Krebs controller, which makes direct motor action in governing the speed possible, and over the truck will go on the general market for the first time. The manufacturers are depending upon the record the truck has made in Europe to recommend it to the commercial trade.

### AMERICAN CARS IN PARIS

#### PORTLAND WOMAN ENCOUNTERS FAMILIAR MAKES.

#### Miss Tuttle Says French Autos Are Far From Beautiful and Make Much Noise.

There are many American-made automobiles in Paris, including cars with right-hand drive manufactured for the English market, according to Miss Ada Alice Tuttle, well-known Portland musician, who is in France as an entertainer for the American soldiers under the auspices of the Y. M. C. A.

In a letter to her parents, Mr. and Mrs. R. M. Tuttle, of Mount Tabor, Miss Tuttle has the following to say about the cars:

"There are a number of American autos running around the streets of Paris. I have seen a good many Wintons, Cadillacs, Fords and Dodges. Today I even saw a Buick. The first night we got here I rode in a Ford and a Dodge. Both had right-hand drives. At lunch a Y. M. C. A. motor transportation man told me that these right-hand drive machines had been built for English trade and sent over here.

"The French cars are very funny. They seem to be two-cylinder affairs, most of them, and have horns like a child's tooter. Mostly they have the Franklin face type, but lack such refinements as wind shields. The engines are very tiny. The other French cars that I have seen do not accord with my ideas of the beautiful, and they are generally very noisy."

### SNOQUALMIE PASS IS CLOSED

#### Snow Halts Motorists Who Now Come by Way of Portland.

Snow has closed the Snoqualmie Pass route to motorists for the year and persons now driving to the coast from Eastern Washington and Northern Idaho are making the trip by way of Portland. The best route out of Spokane now is said to be by way of Rosalia, Colfax, Penawa Ferry, Dayton and

Walla Walla, Wash., and Pendleton, Hopper, Wasco, The Dalles, Hood River and thence over the Columbia River Highway to Portland.

The following telegram regarding the closing of the pass has been sent out by the Automobile Club of Western Washington:

"Two feet of snow on summit. The road will be impassable hereafter this season if there are no weather improvements. There has been considerable trouble with fallen trees during the last few days. There will be no more travel over the pass this season."

### NUMBER FOUND IN HYMN BOOK

#### Army Chaplain Gets Car to Make Rounds at Cantonment.

Chaplain Otis E. Gray, of Camp Funston, came to Topeka recently to report to Bishop James Wise, which is all in the line of his ecclesiastical duty, says the Topeka State Journal. In the course of the report it became apparent that an automobile would be a very desirable addition to the chaplain's equipment.

Bishop Wise thought the matter over and decided that Camp Funston covers a considerable space of territory. Then he reached the conclusion that Chaplain Gray would be able to come into personal contact with a great many more soldiers if he was able to get

### PORTLAND SOLDIER DRIVES ARMY TRUCK OVER THERE



Plotting a motor truck for the 31st Regimental Transportation Corps of the A. E. F. in France is a job very much to the liking of Jack L. Smith, of Company C, former Maxwell salesman of the C. L. Boss Automobile Company, who writes from France that he is feeling great and that he has been recommended by his company commander for a commission in the Army. Mr. Smith was one of the leading salesmen of his firm and says he has some great stories of his experiences to tell when he returns.

around the camp in a hurry. So the bishop called Dean Kaye and H. B. King of the vestry into a special conference. The conference agreed that the chaplain was in dire need of an automobile, and delegated the bishop to obtain one. Churches are notoriously hard up for ready money, so Bishop Wise called on W. H. Imes, an auto agent, and laid the proposition before him. Imes saw the point, and cut the price of a car to the quick.

Chaplain Gray drove his new auto back to camp, and immediately applied for an Army license. He got it—No. 597. Bishop Wise got curious about this time and looked the license number up in the hymn book. The caption for Hymn 597 is this: "The Son of God Goes Forth to War."

### TOURISTS VISITING CALIFORNIA

#### Portland Automobile Man Says Business Prospects Are Bright.

A. L. Smith, sales manager for the Mitchell, Lewis & Staver Company, and Mrs. Smith returned the first of the week from three weeks in California, where they visited in San Francisco, Los Angeles, San Diego and other cities.

"Business conditions are good in California," said Mr. Smith. "All the automobile dealers are looking for a record spring business. California is expecting more tourists than ever, now that the war is over, and already the number of visitors is increasing."

### New Car Owners in County.

Temporary police licenses were issued in Portland last week to the following buyers of latest model motorcars, pending arrival of the official state licenses from Salem. This list is compiled by M. O. Wilkins, publisher of the Automobile Record:

- C. E. Hadley, 767 Wasco, Apperson.
- Miss Genevieve Thompson, 706 Davis, Cadillac.
- George Strang, 1972 East Yamhill, Chevrolet.
- C. C. Hill, 381 Montana avenue, Chevrolet.
- Troy Laundry, East Eleventh and Pine.
- Troy Laundry, East Eleventh and Pine.
- H. R. Golden, 491 Maiden avenue, Harroun.
- Robert A. Hudson, 308 East Thirty-third, Hudson.
- E. W. McQuillin, Wasco, Or., Hudson.
- L. Lightfoot, 128 North Pittscomb, Hudson.
- Irene Kurth, Houlton, Or., Maxwell.
- O. G. Stanton, 531 East Twenty-fifth, Maxwell.
- Mrs. J. W. Long, 232 1/2 Eleventh street, Mitchell.
- E. J. Kane, 461 Albert, Studebaker.
- W. P. Crane Company, 30 Front, Chalmers.
- Fearing & Robnett, 84 Tenth street, Overland.
- E. F. Gallimore, 1208 Rodney avenue, Paige.
- S. H. Latherland, R. F. D. 1, Linnton, Studebaker.
- J. L. Lustersteen, 491 East Sixteenth North, Cass.
- W. C. Teaser, 1090 Vaughn, Chalmers.
- W. B. Clark, 2643 East Forty-eighth Southeast, Chevrolet.
- Wilfred, 394 Sumner, Chevrolet.
- Troy Laundry, East Tenth and Pine, Dodge.
- Thomas H. Badcott, 1091 East Twentieth, Maxwell.
- L. Monette, 625 Main street, Nash.
- J. E. Bennell, 293 1/2 Welder, Buick.
- George A. Southwick, 420 Morrison, Ford.
- A. W. Carner, 454 Washington, Studebaker.

Richmond, Va., according to the Automobile Blue Book, holds as one of the points of interest the "House in which Aaron Burr was a guest during his trial for treason."

### BUICK EXPERTS

#### BUICK REPAIRS EXCLUSIVELY

32,000 sq. ft. floor space.  
Live or dead storage.  
Cheap rates.

#### PARTS SUPPLIES

#### PORTLAND BUICK REPAIR CO. N. W. Cor. Sixteenth and Jefferson St. Portland, Or. Main 3419

### OREGON MOTOR CAR COMPANY EXPANDING

#### Distributors of Studebaker Lease Wemme Building.

### QUARTERS BLOCK LONG

#### Present Location at Park and Davis Will Be Retained for Trucks, Service and Parts.

A demand for more room to care for the firm's growing business has resulted in W. C. Garbe, president of the Oregon Motor Car Company, distribut-

# Oldsmobile

### Sets the pace 21st Year

## EIGHTS AND SIXES

### ROADSTERS, TOURING CARS, COUPES AND SEDANS

# NOW THE WAR IS OVER

The Oldsmobile factory is released by the Government from making Liberty Motors and will immediately resume the production of Oldsmobiles. Not being stocked up with cars at war prices, orders will be filled in rotation at the

## NEW REDUCED PRICES

8-Cylinder, Former Price \$2270  
New \$1900

6-Cylinder, Former Price \$1820  
New \$1495

PRICES DELIVERED AT PORTLAND

# THE OLDSMOBILE CO.

Broadway at Couch OF OREGON Phone Broadway 2270

### LINCOLN STATUE ON HIGHWAY

#### Life-Sized Bronze Figure to Be Gift From Iowan.

Of particular interest is the announcement of the recent dedication of the newest Lincoln statue upon the route of the Lincoln highway at Jefferson, Ia. The life-sized bronze figure of Abraham Lincoln, resting upon a setting of massive granite, has been placed in a prominent position in the Courthouse grounds, directly facing the Lincoln highway. The monument is a gift to the community and the travelers on the Lincoln highway on the part of E. B. Wilson, Western Iowa state district consul of the association, who has since left for service with the Red Cross in France.

If working on the left or road side of a car, exercise extreme care.



### SPORT MARINE

A low, rakish, four-passenger car that comes in special colors and is equipped with wire wheels, extra wheel and five cord tires, traffic bumper, motor meter, sport clock, in fact, the very same equipment that you have always intended should be on the next car you bought. A car of distinction and class.

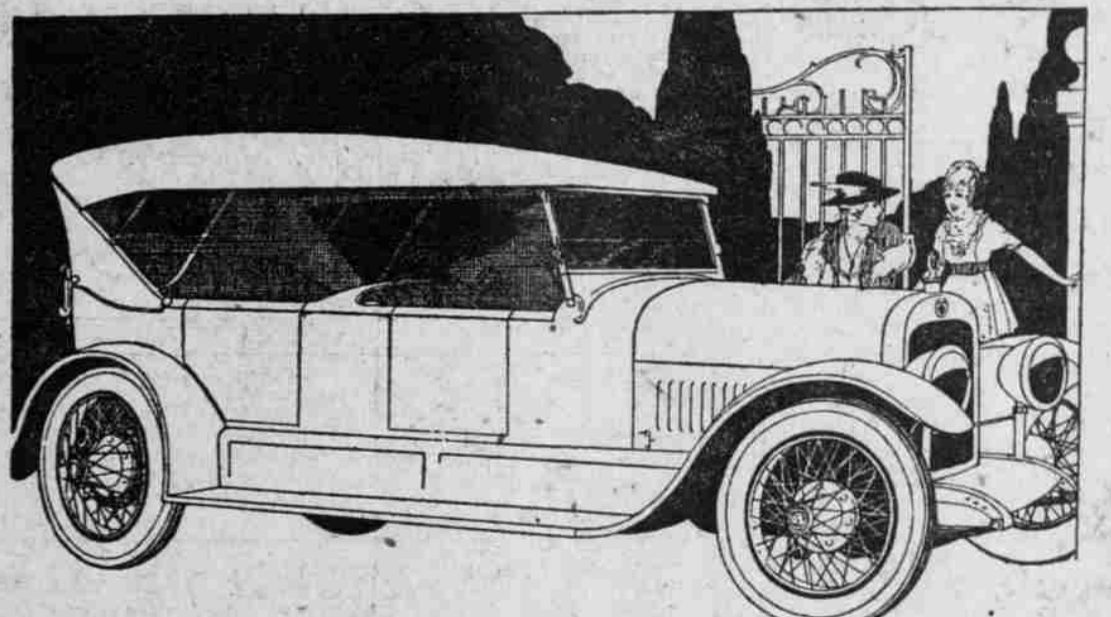
### SUBURBAN SEVEN

A finely finished seven-passenger automobile, also carrying equipment that you must buy separately with other cars. Both cowlings are finished in mahogany wood with two extra seats cleverly concealed. A seven-passenger car with the smart appearance and driving position of the usual four passenger sport car.

## BOTH MODELS Have ALUMINUM BODIES and

Aluminum eliminates weight and the rumbles and rattles of the old-style bodies. Both have small wheels with small fat tires. Both are low hung and distinctive in special colors. The mechanism is the height of perfection thus far attained in motor-car construction, being a combination of the 56-horsepower Red Seal CONTINENTAL MOTOR, the Borg and Beck Dry Plate Clutch, Detroit Transmission and TIMKEN-BUILT front and rear axles, with TIMKEN BEARINGS used throughout the car. Other units are of equal quality so that you know without further reassurance that the car is built right and will stay right.

THE PRICE IS A SURPRISE



## AGAIN IN POSITION TO DELIVER MITCHELL LIGHT SIXES

The light six with the long wheel base and beautiful body lines. No car anywhere near the Mitchell price approaches it in points of ease of riding and handling. The Mitchell is a car of comfort, moderate in first cost and in maintenance. We are now able to make delivery of a limited number in five, seven and two-passenger models.

In the Heart of the Business District Mitchell, Lewis & Staver Co.

Our salesroom is conveniently located. Spend a few minutes with us tomorrow in looking over the new Mitchell and Jordan Models. Then, if desired, a demonstration may be arranged that will convince you of the leadership of either of these cars in their respective classes.

Broadway at Oak



# Another FEDERAL

1 to 5 Tons

## PUTS SPEED IN A BUSINESS

If you are a Farmer, Manufacturer or Jobber you cannot produce or sell more than you can deliver profitably. If your trade area is to be enlarged you must choose a dependable means of increasing deliveries. A Federal motor truck will enable you to do more business at less cost. There is a Federal truck to meet the individual needs of every business. They are rapid, economical and built to insure continued and uninterrupted service.

We have statistics, data and information that should be in the hands of every progressive business man. Let us go over your haulage problems with you—no obligations.

Federals Are Made in Capacities of One to Seven Tons

### The William L. Hughson Company

BROADWAY AND DAVIS PORTLAND, OR.  
PHONE, BROADWAY 231  
Oldest Motor Car Organization on the Pacific, with  
Branches at  
Oakland Los Angeles Seattle San Francisco San Diego

